

IMPULSE — BROWARD



Builder: BROWARD

Year Built: 1996

Model: Motor Yacht

Price: PRICE ON APPLICATION

Location: United States

LOA: 87' 0" (26.52m)

Beam: 20' 0" (6.10m)

Cruise Speed: 12 Kts. (14 MPH)

Max Speed: 17 Kts. (20 MPH)

Our experienced yacht broker, Andrey Shestakov, will help you choose and buy a yacht that best suits your needs **Impulse — BROWARD** from our catalogue. Presently, at Shestakov Yacht Sales Inc., we have a wide variety of yachts available on our sale's list. We also work in close contact with all the big yacht manufacturers from all over the world.

If you would like to buy a yacht **Impulse — BROWARD** or would like help answering any questions concerning purchasing, selling or chartering a yacht, please call **+1(954)274-4435**

TABLE OF CONTENTS

TABLE OF CONTENTS	2
SPECIFICATIONS	6
Basic Information	6
Dimensions	6
Speed, Capacities and Weight	6
Accommodations	6
Hull and Deck Information	6
Engine Information	7
DETAILED INFORMATION	8
Description	8
Salon	8
Dining	9
Galley	9
Dayhead	9
Master Stateroom	9
VIP Stateroom 1	10
Guest Stateroom 1	11
Pilothouse	11
Fly Bridge	11
Aft Deck	12
Bow	12
Crew Quarters	13
Deck Equipment	13
Electrical Equipment	13
Engine & Mechanical	14
Tenders & Toys	14
Exclusions	14
Disclaimer	15

PHOTOS	16
DJI_0397	16
DJI_0398	16
DJI_0399	16
DJI_0400	16
DJI_0401	16
DJI_0402	16
DJI_0403	17
DJI_0404	17
DJI_0405	17
DJI_0406	17
DJI_0408	17
DJI_0409	17
DJI_0410	18
DJI_0412	18
_MG_2911	18
_MG_2912	18
_MG_2768	18
_MG_2774	18
_MG_2777	19
_MG_2783-Edit	19
_MG_2786	19
_MG_2789-Edit	19
_MG_2792	19
_MG_2798-Edit	19
_MG_2801	20
_MG_2906	20
_MG_2909	20
_MG_2819-Edit	20

_MG_2822-Edit	20
_MG_2825	20
_MG_2831	21
_MG_2828	21
_MG_2810	21
_MG_2808	21
_MG_2817	22
_MG_2681-Edit	22
_MG_2684-Edit	22
_MG_2693-Edit	22
_MG_2699	22
_MG_2696	22
_MG_2705	23
_MG_2702	23
_MG_2708-Edit	23
_MG_2711-Edit	23
_MG_2720	24
_MG_2717	24
_MG_2726	24
_MG_2723	24
_MG_2738	25
_MG_2741-Edit	25
_MG_2745	25
_MG_2748	25
_MG_2751	25
_MG_2753	25
_MG_2759	26
_MG_2756	26
_MG_2763	26

_MG_2856_HDR	26
_MG_2861	27
_MG_2859_HDR	27
_MG_2864	27
_MG_2874	27
_MG_2877	28
_MG_2879	28
_MG_2881	28
_MG_2882	28
_MG_2883	28
_MG_2885	28
_MG_2886	29
_MG_2887	29
_MG_2888	29
_MG_2891	29
_MG_2894	29
_MG_2897	29
_MG_2902	30
ER_MG_2733	30
ER_MG_2735	30
CONTACTS	31
Contact details	31
Telephones	31
Office hours	31
Address	31

SPECIFICATIONS

Basic Information

Category: Motor Yacht

Model Year: 1996

Year Built: 1996

Refit Year: 2018

Country: United States

Vessel Top: Raised Pilothouse

Fly Bridge: Yes

Dimensions

LOA: 87' 0" (26.52m)

Beam: 20' 0" (6.10m)

Speed, Capacities and Weight

Cruise Speed: 12 Kts. (14 MPH)

Max Speed: 17 Kts. (20 MPH)

Water Capacity: 550 Gallons

Fuel Capacity: 5000 Gallons

Accommodations

Total Cabins: 3

Sleeps: 7

Total Heads: 4

Captain Cabin: True

Crew Cabin: 2

Crew Sleeps: 4

Crew Heads: 1

Hull and Deck Information

Hull Material: Aluminum

Deck Material: Teak

Hull Color: White

Engine Information

Engines: 2

Manufacturer: Detroit Diesel

Model: DDEC 12V-92 TA

Engine Type: Inboard

Fuel Type: Diesel

DETAILED INFORMATION

Description

“Impulse” is an incredibly spacious 87’ Broward RPH with an exceptional charter history. Don’t let her 1996 birth date fool you. This yacht has been regularly maintained and updated with over \$1m in upgrades over the past several years. Her interior is fully updated and decorated in rich wood and clean neutral tones throughout. Galley and laundry appliances are all new and top-of-the line. Electronics in the pilothouse and flybridge have been updated. In the engine room, she has benefitted from recent engine and generator rebuilds, upgrades to her stabilizer systems, and many other projects.

This Broward is set up for charter in every way. Stepping onboard, guests will immediately feel they are on a much larger yacht. Her raised pilothouse leaves ample space for her salon, dining area and country kitchen on the main deck. Her flybridge, aft deck and bow areas give guests options for dining, relaxing in the sun, or soaking in the hot tub. Below deck, she offers three staterooms, all with en-suite heads, accommodating up to seven guests. Her crew quarters house up to four crew, meaning the level of service that can be provided onboard is exceptional for a yacht of her size.

Salon

- Custom L-shaped upholstered sectional & ottoman w/built-in storage
- Custom built-in birdseye maple entertainment center w/remote hi-lo lift for new Samsung 42" 4K flat screen TV
- Samsung Blue-Ray player
- Apple TV
- Sonos Entertainment Center & Bluetooth hookup.
- Overhead speakers
- End table w/Murano glass
- 2 custom upholstered club chairs
- Glass console table
- Custom radius doors throughout interior
- Custom birdseye maple & glass stair enclosure
- Custom one-piece laminated handrails
- 2 wall sconces
- Custom 2" Nanik wood blinds
- Decorative custom moldings throughout
- New carpet w/soundproofing
- Plentiful storage throughout

Dining

- Custom birdseye maple bar with new quartz countertop with glass storage below.
- 42-bottle dual temperature zone wine refrigerator below bar
- Built-in buffets w/storage to port & starboard, with custom moldings & raised panels
- Glass dining table with seating for 6
- 6 upholstered dining chairs

Galley

- Completely refurbished w/all stainless steel appliances & granite countertops
- Kitchenaid refrigerator/freezer
- GE Monogram under counter refrigerator
- Samsung induction cooktop
- Dacor convection/conventional oven
- Kitchenaid dishwasher
- Garbage disposal
- Granite countertops w/built-in chopping block
- Nanik 2" wood blinds
- Custom wall coverings
- Custom cabinetry w/overlay doors, pullout drawers & keepers. Veneer cabinetry w/sea stops on drawers & Euro latches. Custom sink & fixtures
- Recessed lighting
- 8-person built in settee with storage underneath
- Custom teak table
- Built in custom buffet with mirror top
- 32" Samsung flatscreen TV
- Overhead speakers

Dayhead

- Tecma electric head
- Custom marble countertops
- Stainless steel fixtures
- Sink with storage below
- Beveled glass mirror
- Exhaust fan

Master Stateroom

- Private companionway to master stateroom

- Beautiful light wood, custom King bed w/new custom spread & shams
- Built-in lighted vanity
- Custom window treatments
- 2 Large cedar closets
- New 50" Samsung 4k flat screen TV
- New Bose Entertainment center
- Samsung Blue-Ray player
- Apple TV
- Speakers overhead
- Safe in closet for valuables

Ensuite Head:

- His & Her private bath w/custom marble vanity tops
- Marble flooring
- Custom stainless steel fixtures
- mirrored walls above vanity,
- Bidets on both sides
- Hers: Whirlpool Jacuzzi tub, with glass enclosure
- His: full size marble shower & walls with full height glass panels
- Exhaust fan

VIP Stateroom 1

- Queen bed with storage below
- Custom spread & shams
- Custom upholstered headboard
- Custom window treatments & valance
- Built-in birdseye maple dressers & nightstands with lamps
- Entertainment center with Samsung 30" TV, Sony stereo & CD player
- Speakers overhead
- Cedar-lined hanging closet
- Recessed lighting & reading lamps
- Custom roman shades & window treatments

Ensuite Head:

- Private bath w/full tub & Glastec shower
- stainless steel fixtures
- Tecma electric head
- custom wall coverings window treatments, vanity top & mirror
- New subfloor and new vinyl flooring with soundproofing
- Custom marble countertops
- Exhaust fan

Guest Stateroom 1

- 2 Twin berths and pullman berth with new spread & shams
- Custom upholstered headboard
- Large hanging lockers
- Built-in Birdseye maple dressers & nightstand
- Entertainment center with Samsung 30" TV, Sony stereo & CD players
- Speakers overhead
- Recessed lighting and reading lamps
- Custom roman shades & window treatments
- Custom wall coverings

Ensuite Head

- Private shower
- Tecma electric head
- new custom wall coverings & window treatments
- Custom marble countertops
- Stainless steel fixtures
- New subfloor and new vinyl flooring with soundproofing
- Exhaust fan

Pilothouse

- Furuno Chartplotter 12"
- Furuno radar 18"
- Furuno Wind reader
- Magnetic compass
- Naiad stabilizer controls
- Bow thruster controls
- Yacht Controller remote
- 2 x VHF radio
- Iridium Satellite phone
- 2 x Detroit Diesel engine display
- CCTV Camera display
- Furuno Autopilot
- Generator control for windlass, bow thruster
- Barometer
- Bench helm seat with storage underneath
- Alarm panel

Fly Bridge

- Pipewelders custom top w/EZ2CY acrylic full enclosure w/lights
- New sunshade between Bimini & arch (new '16)
- New Polycarbonate enclosure ('16)
- Fusion sound system with outdoor speakers
- Full centerline control station with New Garmin 8215 display, Furuno NAVNet 3D, Detroit Diesel displays, new Garmin HD2 4ft Array, and New VHF580
- Wet bar with refrigerator, new Isotherm ice-maker, double Jenn Air grill & stainless steel sink
- Extended seating outboard & aft cushions & new canvas cover
- Arch type mast w/ hinged upper section
- Bench style helm seat
- Nautical Structures 1700 lb davit (ram serviced '15)
- 2 Revere 6-person canister life rafts, each on hydrostatic releases
- 4-person hot tub
- EPIRB
- Custom Corian corner table
- Plenty of under storage
- 2 Freshwater washdown connections
- Yacht Controller

Aft Deck

- Bench seating with 3 varnished chairs with custom cushions & covers
- Custom Corian pedestal table
- Wet bar with stainless steel sink & U-line refrigerator
- Teak decking
- Custom recessed lighting w/dimmers
- Overhead speakers
- Reverse style transom w/spiral stairway to swim platform starboard
- Boarding gates, port & starboard
- Stainless ladder w/teak treads leading up to flybridge
- Plenty of under storage
- Swim ladder
- Freeman watertight hatch to steering access
- 3 Pop up cleats
- 2 Storage lockers

Bow

- Large Sunpad
- Bench with seating for 3
- 2 x washdown hookups

- Bosun locker

Crew Quarters

- Captain's cabin forward w/Queen berth
- Captain's desk
- Cedar lined hanging locker
- Samsung 32" TV
- Second crew cabin over/under twin berths
- Cedar-lined hanging locker
- Element 25" flat screen TV (new)
- Crew head
- Crew Galley with Avanti fridge/freezer combo
- Miele Washer/dryer
- Magic Chef deep freezer
- Stainless steel sink
- Microwave
- Ample storage

Deck Equipment

- Maxwell 3500 lb windlass (serviced '15) with dual remotes
- New 350' 1/2" chain ('15)
- Freshwater anchor washdown
- Broward anchor system w/foredeck hatch to crews quarters
- Sliding exterior doors with new bearings ('16).
- New Newwave 5-step aluminum gangway with varnished handrails
- Varnished teak cap rail (new '15)
- Polished stainless steel thresholds
- Plates at exterior doors
- Kalenberg stainless steel air horns
- Polished stainless steel rub rail & teak cap rails
- RCL 600 searchlight (serviced '16)
- Quartz light on bow
- Spare anchor
- Spot Zero Washdown system

Electrical Equipment

- 2 Northern Lights 40KW Generators on Hydro elastic mounts w/wet exhausts & sound shield

- Atlas shore power system (serviced '15)
- Gel Cell batteries
- 3 Charles Industry 12v & 24v battery charger new 2015.
- 2 - 220v Isolation transformers with 10v & 24v step voltage boost
- 110v & 24v lighting
- 110v interior & exterior receptacles
- 2 - 75' 100 amp single phase power cords
- Video Surveillance cameras throughout

Engine & Mechanical

- Twin DDEC 12V-92TA's, Port engine rebuilt '15 (400 hrs SMOH)
- HRO Watermaker ('15) 600 GPD, new membranes
- Racor fuel filters w/manual priming pump (serviced '16)
- 2 x Ocean Breeze 6-ton chillers (new '16) w/ 10 air handlers throughout
- Naiad 6' Stabilizer Fins square
- HPS (serviced '15)
- 12" bow thruster w/2 control stations off of port generator (full service '15)
- New Engine room paint ('16)
- 2 x Northern Lights Generators, Port generator rebuilt '16, 1800 RPM's w/sound shield
- Fuel fill & transfer manifold, 110v & 12v transfer pumps
- 110v bilge pump & manifold w/pick-ups in all compartments
- 12v bilge pump & float switch
- Emergency bilge pumps from main engine raw water pumps
- Lube oil change system for each engine & generator
- Hot water circulation pump: 2 x 50 gal tanks
- Work bench with vise
- 220v New exhaust fan ('16)
- 18' air hose w/ quick disconnects

Tenders & Toys

- Dual 2019 SeaDoo Spark Jetskis - still under warranty
- 2 Paddle boards
- Inflatable tubes
- Wakeboard
- Water skis
- Fishing Gear
- Snorkel gear

Exclusions

Owner's personal belongings.

Disclaimer

The Company offers the details of this vessel or yacht in good faith but cannot guarantee or warrant the accuracy of this information nor warrant the condition of the vessel. A buyer should instruct his representatives, agents, or his surveyors, to investigate such details as the buyer desires validated. This vessel or yacht is offered subject to prior sale, price change, or withdrawal without notice.

PHOTOS

DJI_0397



DJI_0398



DJI_0399



DJI_0400



DJI_0401



DJI_0402



DJI_0403



DJI_0404



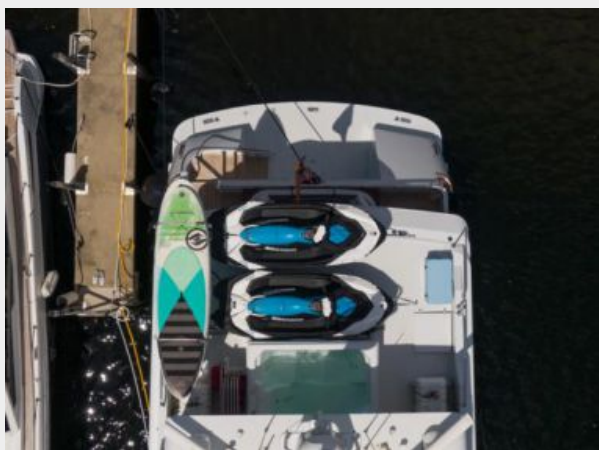
DJI_0405



DJI_0406



DJI_0408



DJI_0409



DJI_0410



DJI_0412



_MG_2911



_MG_2912



_MG_2768



_MG_2774



_MG_2777



_MG_2783-Edit



_MG_2786



_MG_2789-Edit



_MG_2792



_MG_2798-Edit



_MG_2801



_MG_2906



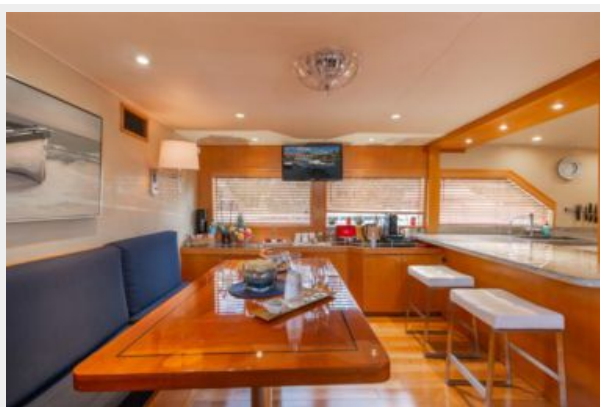
_MG_2909



_MG_2819-Edit



_MG_2822-Edit



_MG_2825



_MG_2828



_MG_2831



_MG_2810



_MG_2808



_MG_2817



_MG_2681-Edit



_MG_2684-Edit



_MG_2693-Edit



_MG_2699



_MG_2696



_MG_2702



_MG_2705



_MG_2708-Edit



_MG_2711-Edit



_MG_2717



_MG_2720



_MG_2723



_MG_2726



_MG_2738



_MG_2741-Edit



_MG_2745



_MG_2748



_MG_2751



_MG_2753



_MG_2756



_MG_2759



_MG_2763



_MG_2856_HDR



_MG_2859_HDR



_MG_2861



_MG_2864



_MG_2874



MG_2877



MG_2879



MG_2881



MG_2882



MG_2883



MG_2885



_MG_2886



_MG_2887



_MG_2888



_MG_2891



_MG_2894



_MG_2897



_MG_2902



ER_MG_2733



ER_MG_2735



CONTACTS

Andrey Shestakov, leading yacht broker of the sales department of Shestakov Yacht Sales Inc. Shestakov Yacht Sales Inc., the official representative of the Miami/Fort Lauderdale FL headquarters.

Contact details

Email: andrey@shestakovyachtsales.com

Web: shestakovyachtsales.com/en/

Telephones

USA: +1(954)274-4435

Office hours

Monday – Saturday: **9:00 - 21:00** EDT

Sunday: **closed**

Address



Harbour Towne Marina, 850 NE 3rd St,
STE 213, Dania, FL 33004