

## OHANA — CHEOY LEE



**Builder:** CHEOY LEE

**Year Built:** 1992

**Model:** Cruising Yacht

**Price:** PRICE ON APPLICATION

**Location:** United States

**LOA:** 103' (31.39mm)

**Beam:** 23.75

**Max Draft:** 6' 6" (1.98mm)

**Cruise Speed:** 11 Knots Kts. (13 MPH)

**Max Speed:** 15 Knots Kts. (17 MPH)

Our experienced yacht broker, Andrey Shestakov, will help you choose and buy a yacht that best suits your needs **OHANA — CHEOY LEE** from our catalogue. Presently, at Shestakov Yacht Sales Inc., we have a wide variety of yachts available on our sale's list. We also work in close contact with all the big yacht manufacturers from all over the world.

If you would like to buy a yacht **OHANA — CHEOY LEE** or would like help answering any questions concerning purchasing, selling or chartering a yacht, please call **+1(954)274-4435**

# TABLE OF CONTENTS

|                                      |    |
|--------------------------------------|----|
| TABLE OF CONTENTS                    | 2  |
| SPECIFICATIONS                       | 5  |
| Basic Information                    | 5  |
| Dimensions                           | 5  |
| Speed, Capacities and Weight         | 5  |
| Accommodations                       | 5  |
| Hull and Deck Information            | 5  |
| Engine Information                   | 6  |
| PHOTOS                               | 7  |
| Starboard Profile                    | 7  |
| Foredeck                             | 7  |
| Port Sidedeck                        | 7  |
| Foredeck                             | 7  |
| Starboard Sidedeck                   | 8  |
| Enclosed Aft Deck                    | 8  |
| Salon                                | 8  |
| Salon Bar                            | 8  |
| Salon/Stairs to Accommodations       | 8  |
| Salon Facing Aft                     | 8  |
| Salon Facing Aft                     | 9  |
| Dining Room                          | 9  |
| Galley                               | 9  |
| Galley                               | 9  |
| Pilothouse                           | 9  |
| Pilothouse                           | 9  |
| Pilothouse                           | 10 |
| Flybridge Lounge - Aft of Pilothouse | 10 |
| Flybridge Lounge - Aft of Pilothouse | 10 |

|                               |    |
|-------------------------------|----|
| Flybridge Deck                | 10 |
| Master Stateroom - Main Deck  | 10 |
| Master Stateroom - Main Deck  | 10 |
| Master Bathroom               | 11 |
| Master Bathroom               | 11 |
| Master Bedroom Entryway       | 11 |
| Accommodation Companionway    | 11 |
| Port/VIP Stateroom - Forward  | 12 |
| Port/VIP Stateroom - Forward  | 12 |
| Port/VIP Bathroom - Forward   | 12 |
| Starboard Stateroom - Forward | 12 |
| Starboard Stateroom - Forward | 12 |
| Starboard Bathroom - Forward  | 12 |
| Starboard Bathroom - Forward  | 13 |
| Port Stateroom - Aft          | 13 |
| Port Stateroom - Aft          | 13 |
| Port Bathroom - Aft           | 13 |
| Port Bathroom - Aft           | 13 |
| Engine Room                   | 13 |
| Engine Room                   | 14 |
| Engine Room                   | 14 |
| Flybridge Deck                | 14 |
| Sun Deck - Jacuzzi            | 14 |
| Sundeck - Mast                | 14 |
| Profile                       | 14 |
| Hauled Out                    | 15 |
| Starboard                     | 15 |
| Transom/Swim Platform         | 15 |
| Port                          | 15 |

---

|                       |    |
|-----------------------|----|
| Transom/Swim Platform | 16 |
| Running Gear          | 16 |
| CONTACTS              | 17 |
| Contact details       | 17 |
| Telephones            | 17 |
| Office hours          | 17 |
| Address               | 17 |

---

# SPECIFICATIONS

---

## Basic Information

---

**Category:** Cruising Yacht

**Sub Category:** Long Range Cruiser

**Model Year:** 1992

**Year Built:** 1992

**Country:** United States

## Dimensions

---

**LOA:** 103' (31.39mm)

**Beam:** 23.75

**Max Draft:** 6' 6" (1.98mm)

## Speed, Capacities and Weight

---

**Cruise Speed:** 11 Knots Kts. (13 MPH)

**Max Speed:** 15 Knots Kts. (17 MPH)

**Water Capacity:** 950 Gallons

**Fuel Capacity:** 9800 Gal Gallons

## Accommodations

---

**Total Cabins:** 4

**Sleeps:** 8

**Total Heads:** 5

**Crew Berths:** 5

**Crew Heads:** 3

## Hull and Deck Information

---

**Hull Material:** Fiberglass Sandwich

**Deck Material:** Teak

**Hull Configuration:** Full Displacement

---

## Engine Information

---

**Engines:** 2

**Manufacturer:** Caterpillar

**Engine Type:** Inboard

**Fuel Type:** Diesel

# PHOTOS

**Starboard Profile**



**Foredeck**



**Port Sidedeck**



**Foredeck**



**Starboard Sidedeck**



**Enclosed Aft Deck**



**Salon**



**Salon Bar**



**Salon/Stairs to Accommodations**



**Salon Facing Aft**





**Salon Facing Aft**



**Dining Room**



**Galley**



**Galley**



**Pilothouse**



**Pilothouse**



**Pilothouse**



**Flybridge Lounge - Aft of Pilothouse**



**Flybridge Lounge - Aft of Pilothouse**



**Flybridge Deck**



**Master Stateroom - Main Deck**



**Master Stateroom - Main Deck**



**Master Bathroom**



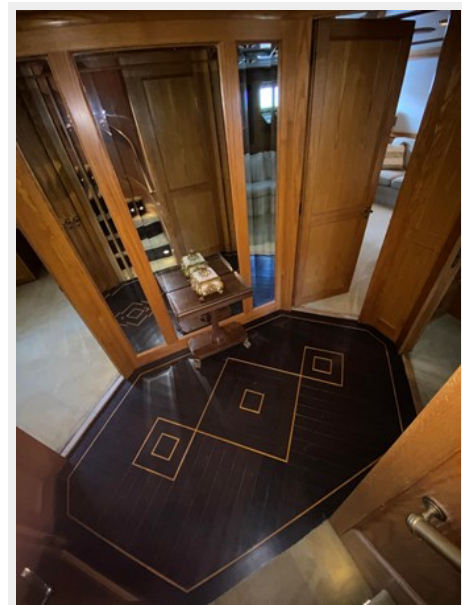
**Master Bathroom**



**Master Bedroom Entryway**



**Accommodation Companionway**



**Port/VIP Stateroom - Forward**



**Port/VIP Stateroom - Forward**



**Port/VIP Bathroom - Forward**



**Starboard Stateroom - Forward**



**Starboard Stateroom - Forward**



**Starboard Bathroom - Forward**



**Starboard Bathroom - Forward**



**Port Stateroom - Aft**



**Port Stateroom - Aft**



**Port Bathroom - Aft**



**Port Bathroom - Aft**



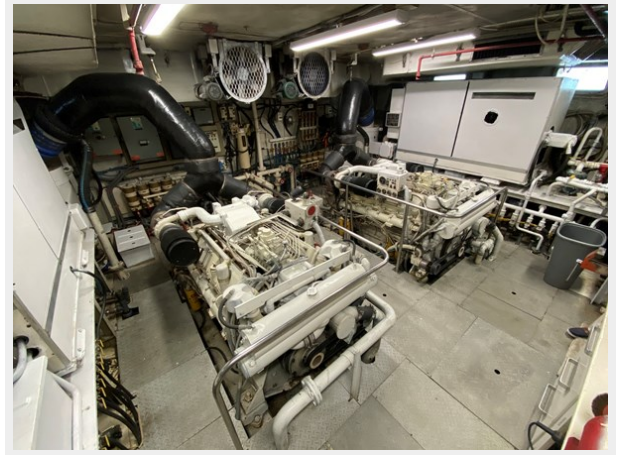
**Engine Room**



**Engine Room**



**Engine Room**



**Flybridge Deck**



**Sun Deck - Jacuzzi**



**Sundeck - Mast**



**Profile**



**Hauled Out**



**Starboard**



**Transom/Swim Platform**



**Port**



### Transom/Swim Platform



### Running Gear





# CONTACTS

---

Andrey Shestakov, leading yacht broker of the sales department of Shestakov Yacht Sales Inc. Shestakov Yacht Sales Inc., the official representative of the Miami/Fort Lauderdale FL headquarters.

## Contact details

---

Email: [andrey@shestakovyachtsales.com](mailto:andrey@shestakovyachtsales.com)

Web: [shestakovyachtsales.com/en/](http://shestakovyachtsales.com/en/)

## Telephones

---

USA: +1(954)274-4435

## Office hours

---

Monday – Saturday: **9:00 - 21:00** EDT

Sunday: **closed**

## Address

---



Harbour Towne Marina, 850 NE 3rd St,  
STE 213, Dania, FL 33004