

## ASTONISH — SANLORENZO



**Builder:** SANLORENZO

**LOA:** 94' 0" (28.65m)

**Year Built:** 2012

**Beam:** 22' 8" (6.91m)

**Model:** Motor Yacht

**Price:** PRICE ON APPLICATION

**Location:** United States

Our experienced yacht broker, Andrey Shestakov, will help you choose and buy a yacht that best suits your needs **Astonish — SANLORENZO** from our catalogue. Presently, at Shestakov Yacht Sales Inc., we have a wide variety of yachts available on our sale's list. We also work in close contact with all the big yacht manufacturers from all over the world.

If you would like to buy a yacht **Astonish — SANLORENZO** or would like help answering any questions concerning purchasing, selling or chartering a yacht, please call **+1(954)274-4435**

---

# TABLE OF CONTENTS

---

TABLE OF CONTENTS	2
SPECIFICATIONS	3
Overview	3
Basic Information	3
Dimensions	3
Speed, Capacities and Weight	3
Accommodations	4
Hull and Deck Information	4
Engine Information	4
DETAILED INFORMATION	5
Overview	5
Exclusions	6
Disclaimer	6
PHOTOS	7
CONTACTS	20
Contact details	20
Telephones	20
Office hours	20
Address	20

---

# SPECIFICATIONS

---

## Overview

---

The SL94 is a stunning planing yacht. The craftsmanship of the various components of this model illustrate the incredible skill level associated with the Sanlorenzo pedigree. Designed for the Americas yacht has full US Edition specifications. These items include Zero Speed stabilizers, hydraulic swim platform, tender garage, topicalized A/C system and hard top. TWIN MTU 16V2000 M84 TWIN 55 kW Onan generators Accommodations for 8 guests in 4 staterooms, or 10 using Pullman berths in the twin guest staterooms. Sleeps up to 4 crew. Flybridge is fully-equipped for dining and entertaining with a Boffi bar, TV, ice maker and fridge. Elegant Italian lounge furniture by Minotti. Interior spaces are outfitted by a collection of woods, fabrics and unfinished stones designed to honor their natural beauty. Bulkheads are bleached Oak with Canalet Walnut cabinet fronts. LED lighting is placed throughout the yacht. Beautiful, modern salon furniture is upholstered in a variety of neutral textures for a luxurious feel. Interiors designed by renowned yacht interior designer Marty Lowe. Call today to schedule a showing. Located in Aventura, Florida

## Basic Information

---

**Category:** Motor Yacht

**Model Year:** 2012

**Year Built:** 2012

**Country:** United States

## Dimensions

---

**LOA:** 94' 0" (28.65m)

**LWL:** 80' 6" (24.54m)

**Beam:** 22' 8" (6.91m)

**MFG Length:** 94' 0" (28.65m)

## Speed, Capacities and Weight

---

**Displacement:** 213850 Pounds

**Water Capacity:** 502 Gallons

**Holding Tank:** 470 Gallons

**Fuel Capacity:** 2839 Gallons

---

## Accommodations

---

**Total Cabins:** 4

**Total Heads:** 6

---

## Hull and Deck Information

---

**Hull Material:** Fiberglass

---

## Engine Information

---

**Engines:** 2

**Manufacturer:** MTU

**Model:** 16V2000

**Engine Type:** Inboard

**Fuel Type:** Diesel

# DETAILED INFORMATION

## Overview

**Engines & Mechanical** Main Engines - 2x MTU 16V2000 M84 @ 2,185hp/ea Electric Bow Thruster - 400V w/881lb of thrust, controls at pilothouse and flybridge Electric Stabilizers - CMC Marine Zero Speed fin stabilizing system Electric Steering - ZF joystick Smart Command with I-anchor Double Racor filters for generators Tropicalized air conditioning system - 240,000 BTU with 2 chillers Watermaker - Sea Recovery 1,800 gallons/day Water tank purification system with active carbons Back up in line raw water pump for A/C system Overboard venting for clothes dryer in (lieu of self-contained ventilation) FM200 fire system equipment (USCG approved)

**Electrical** Electrical system - 127/220V Shore power connections - Two (2) 220V AC 100A three-phase 60Hz Additional 220V/100A three-phase shore power inlet at bow Generators - Two (2) Onan 55kw 60Hz Battery charger - 12V/25A for generator batteries Glendenning Cablemaster - One (1) CM8 Frequency convertor - ASEA (220V/110V - 50 Hz/60 Hz) with seamless transfer Double gang USA/EU outlets GFCI distributed in technical room, heads, galley and exterior utilizing waterproof boxes in engine room and lazarette

**Navigation**

**Electronics** Raymarine G Series Platinum navigation package Two (2) 17-inch color monitors in pilothouse Full navigation at flybridge helm, including two (2) 15-inch color monitors Open array 4kw 48-inch radar Raymarine thermal camera for day/night vision Remote VHF microphones with two independent antennas CCTV system - Three (3) cameras, two fixed on the aft deck and one pan/tilt in the engine room. Monitors in pilothouse and crew mess area. Complete Apple audio/visual system

**Deck and Exterior** Extended electro-hydraulic swim platform Tender garage with 1100lb electro-hydraulic crane (14ft max tender length) Six (6) OceanLED underwater lights Dual purpose aft deck coffee tables with pull-out tray system Additional exterior entrance door in galley area Extra-large portholes in master stateroom Marquipt Sea Stair Flybridge Hard top Teak flybridge decks Sail cover sun awning system style with removable stainless steel stanchions Boffi bar cabinet with refrigerator and icemaker Flat screen TV on a lift system in cabinet behind helm seat Minotti dining table for up to 8 guests

**Interior & Decor** Interiors by World Renowned Yacht Interior Designer Marty Lowe Bleached Oak and Canalet Walnut interior woodwork throughout Hardwood Oak flooring throughout the main deck Raw-edge bamboo marble bar top with bottle and glass storage in salon Free-standing sculptural grid work of leather laced in stainless steel in salon Multi-purpose area forward of the salon for formal dining, media room or office Salon furniture by Flexform Lighting by Artemide Electric curtains for salon, dining/multi-purpose area and master stateroom Master stateroom located aft on lower deck with his and her heads Raw-edge Bamboo marble finishing in master stateroom shower bulkhead Ensuite heads in all guest staterooms VIP stateroom located forward Twin guest staterooms located midship to port and starboard Pullman berths in twin guest staterooms LED strip lighting under berths, behind headboards and in the head vanity mirrors Accommodations for 4 crew Crew quarters located forward with direct galley entrance

**Galley & Appliances** Induction Cooktop - Gaggenau CI491-602 Fusion Oven - Gaggenau EB388610 Microwave/Convection

Gaggenau BM281-711-200 Steam Oven - Gaggenau BS270610Coffeemaker - Gaggenau CM250710Ventilation Hood - Gaggenau AH900791Refrigerator/Freezer Two (2) Subzero S700TCI, one with ice maker Waste Disposal -Washing Machine -Miele W3003Dryer - Miele T8005Dining/Multi-purpose Area Wine Cooler - Sub-Zero 424 Beverage Refrigerator - **Tankage**Tank Capacities Fuel: 2,839 US gallonsFresh Water: 502 US gallonsBlack Water: 530 US gallonsGrey Water: 850 US gallons**Additional Information**RINA Classification including tonnage certificateEnvironmental Protection Award by ShowBoatsSuperyacht of the Year at the 2011 Genoa International Boat Show

## Exclusions

---

Owner's personal belongings.

## Disclaimer

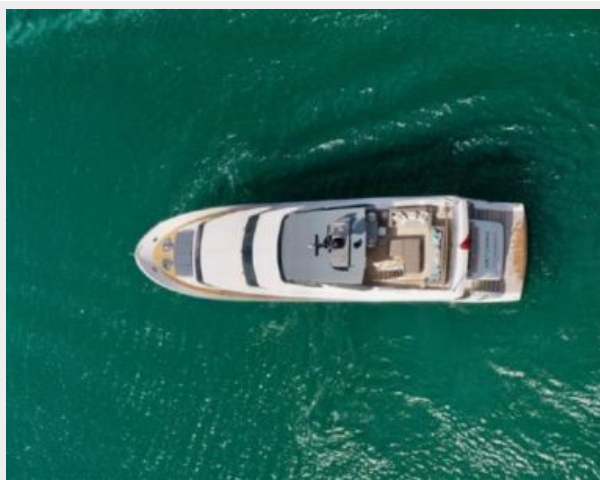
---

The Company offers the details of this vessel or yacht in good faith but cannot guarantee or warrant the accuracy of this information nor warrant the condition of the vessel. A buyer should instruct his representatives, agents, or his surveyors, to investigate such details as the buyer desires validated. This vessel or yacht is offered subject to prior sale, price change, or withdrawal without notice.

# PHOTOS



















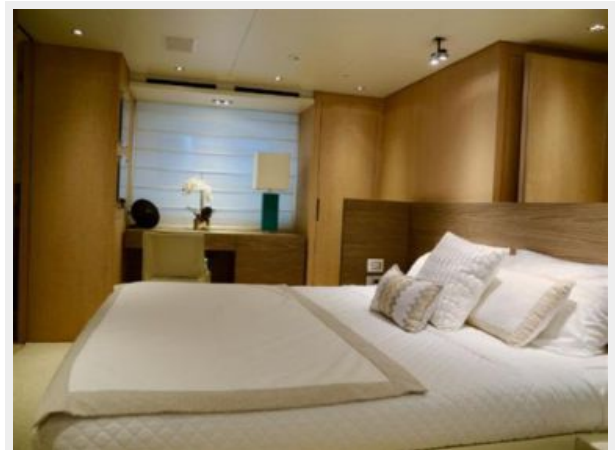
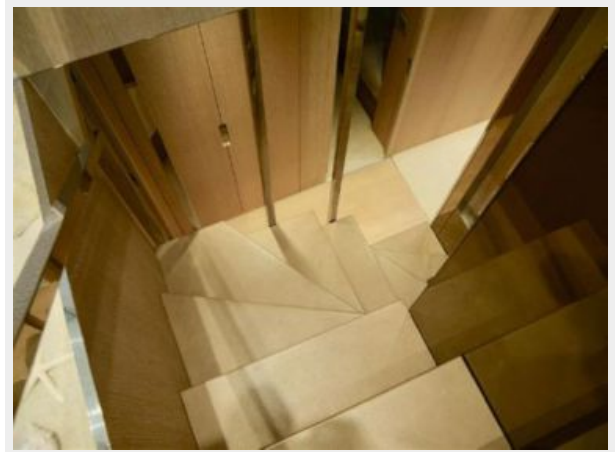
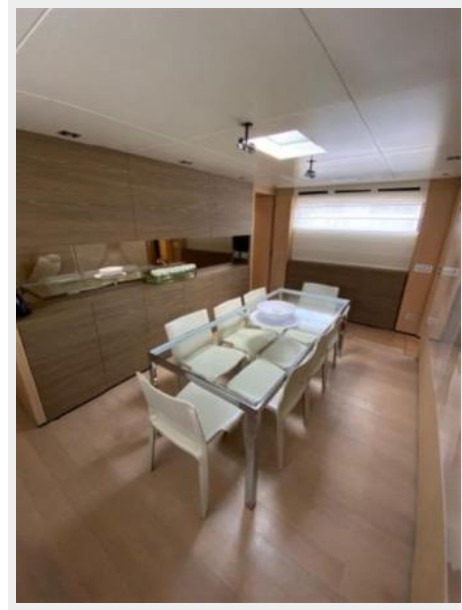




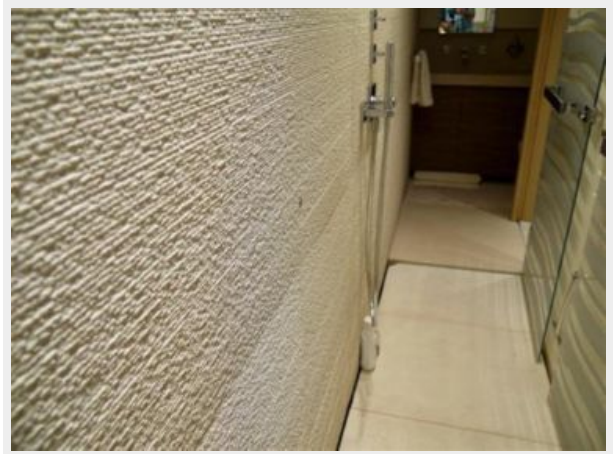






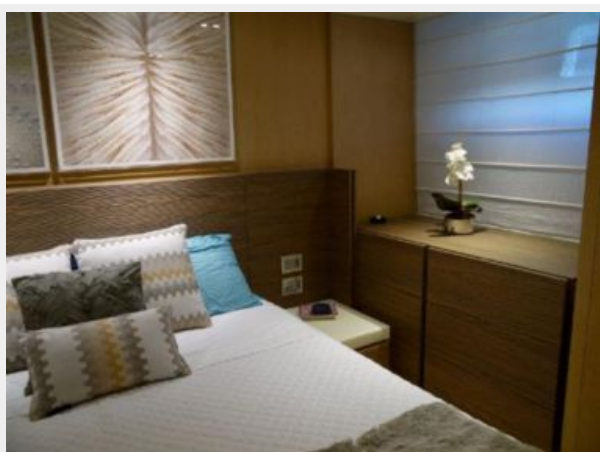












# CONTACTS

---

Andrey Shestakov, leading yacht broker of the sales department of Shestakov Yacht Sales Inc. Shestakov Yacht Sales Inc., the official representative of the Miami/Fort Lauderdale FL headquarters.

## Contact details

---

Email: [andrey@shestakovyachtsales.com](mailto:andrey@shestakovyachtsales.com)

Web: [shestakovyachtsales.com/en/](http://shestakovyachtsales.com/en/)

## Telephones

---

USA: +1(954)274-4435

## Office hours

---

Monday – Saturday: **9:00 - 21:00** EDT

Sunday: **closed**

## Address

---



Harbour Towne Marina, 850 NE 3rd St,  
STE 213, Dania, FL 33004