

PATIENCE — ENDEAVOUR



Builder: ENDEAVOUR

Year Built: 1982

Model: Center Cockpit

Price: PRICE ON APPLICATION

Location: United States

LOA: 40' 0" (12.19m)

Beam: 13' 0" (3.96m)

Min Draft: 5' 0" (1.52m)

Max Draft: 5' 0" (1.52m)

Cruise Speed: 4 Kts. (5 MPH)

Max Speed: 6 Kts. (7 MPH)

Our experienced yacht broker, Andrey Shestakov, will help you choose and buy a yacht that best suits your needs **Patience — ENDEAVOUR** from our catalogue. Presently, at Shestakov Yacht Sales Inc., we have a wide variety of yachts available on our sale's list. We also work in close contact with all the big yacht manufacturers from all over the world.

If you would like to buy a yacht **Patience — ENDEAVOUR** or would like help answering any questions concerning purchasing, selling or chartering a yacht, please call **+1(954)274-4435**

TABLE OF CONTENTS

TABLE OF CONTENTS	2
SPECIFICATIONS	5
Overview	5
Basic Information	5
Dimensions	5
Speed, Capacities and Weight	6
Accommodations	6
Hull and Deck Information	6
Engine Information	6
DETAILED INFORMATION	7
VESSEL WALKTHROUGH	7
SAILS & RIGGING	7
Reviews	7
Dinghy	7
Exclusions	7
Disclaimer	7
PHOTOS	9
Endeavour 40 Center Cockpit	9
Endeavour 40 Center Cockpit	9
Endeavour 40 CC main salon	9
Endeavour 40 CC Full galley	9
cockpit helm station	9
wheel and compass	9
view forward from cockpit	10
view aft from cockpit	10
lewmar winch	10
lewmar winch	10
lewmar winch	10

roller furling	10
Endeavour 40 Center Cockpit foredeck	11
Endeavour 40 windlass	11
foredeck	11
Endeavour 40 Center Cockpit foredeck port	11
Endeavour 40 Center Cockpit starboard foredeck	11
Endeavour 40 Center Cockpit foredeck	11
canvas bimini and mainsail cover	12
mast and winch	12
Endeavour 40 CC port side deck	12
Endeavour 40 Center Cockpit port	12
Endeavour 40 Center Cockpit starboard	12
Endeavour 40 CC starboard side deck	12
Endeavour 40 Center Cockpit bow starboard	13
Endeavour 40 Center Cockpit starboard	13
Main saloon center folding table	13
port saloon settee	13
port saloon TV, bulkhead, storage	13
port saloon settee	13
starboard saloon settee	14
Large aft cabin double	14
hanging locker and stowage in aft cabin	14
head 1 with shower, sink, commode	14
head 1 with shower, sink, commode	14
starboard view forward from aft cabin	14
galley with SS sink, oven/stove, toaster, refrigerator & microwave	15
navigation station starboard	15
galley counters and storage	15
gas 3-burner stove top	15

gas oven	15
Head 2 with shower, sink, commode	15
v-berth forward	16
V-berth forward	16
v-berth port with custom mattress topper	16
anchor locker	16
v-berth starboard	16
v-berth hanging locker	16
v-berth hanging locker	17
v-berth stowage	17
AC/DC control panel	17
30-amp battery charger	17
engine compartment	17
engine compartment	17
Perkins 4-108 50 HP Diesel engine	18
Perkins 4-108 50 HP Diesel engine	18
endeavour_40_layout	18
CONTACTS	19
Contact details	19
Telephones	19
Office hours	19
Address	19

SPECIFICATIONS

Overview

1982 Endeavour 40 Center Cockpit fixed keel Masthead Sloop Cruiser. This American sailboat offers sturdy, long-range cruising capabilities, 50 HP Perkins diesel, 2 cabins, 2 heads, teak brightwork, updated 2015 electronics, 2016 Gori feathering prop, 2017 bimini & frame, 2019 Air Conditioning, and more...

The Endeavour 40 was designed to compete directly with boats built by Gulfstar Yachts. It has a center cockpit, aft cabin, teak accents, masthead sloop rig, raked stem, reverse transom, skeg-mounted rudder and wheel. Draws 5-feet with fixed fin keel and 2016 Gori feathering 3-blade propeller.

Vessel is fitted with a British Perkins Engine 4-108 50 HP diesel engine.

Dingy aboard does not convey.

Basic Information

Category: Center Cockpit

Sub Category: Cruising Sailboat

Model Year: 1982

Year Built: 1982

Country: United States

Coast Guard #: 654660

Vessel Top: Bimini Top

Dimensions

LOA: 40' 0" (12.19m)

LWL: 32' 0" (9.75m)

Beam: 13' 0" (3.96m)

Min Draft: 5' 0" (1.52m)

Max Draft: 5' 0" (1.52m)

Clearance: 55' 0" (16.76m)

MFG Length: 40' 0" (12.19m)

Speed, Capacities and Weight

Cruise Speed: 4 Kts. (5 MPH)

Max Speed: 6 Kts. (7 MPH)

Displacement: 25000 Pounds

Gross Tonnage: 25 Pounds

Water Capacity: 140 Gallons

Holding Tank: 80 Gallons

Fuel Capacity: 75 Gallons

Accommodations

Total Cabins: 2

Total Berths: 4

Sleeps: 6

Total Heads: 2

Hull and Deck Information

Hull Material: Fiberglass

Hull Configuration: Fin & Skeg

Hull Color: white

Hull Finish: Aluminum

Engine Information

Engines: 1

Manufacturer: Perkins Diesel

Model: 4108

Engine Type: Inboard

Fuel Type: Diesel

DETAILED INFORMATION

VESSEL WALKTHROUGH

There is sleeping for six people, with a double "V"-berth in the bow cabin, two straight settees in the main cabin and an aft cabin double. The main cabin features a folding dining table with two drop-leaves and parquet sole. The galley is located to port just aft of the companionway ladder. The galley is "L"-shaped and is equipped with a three-burner alcohol-fired stove and oven combination, Kenmore microwave, double stainless sink with hot and cold pressurized water, and 12V refrigerator. Opposite the galley to starboard is a sizable navigation station as well as stowage cubbies throughout all cabins. The engine is located centrally, under the companionway ladder. The cabin is trimmed in teak and fitted with 2018 Sunbrella cushions and fabric on the Settees. Ventilation is provided by 16 ports that open and four hatches. Air conditioning and heating comes from a 2019 Dometic reverse-cycle unit with emergency heating supplied by a Force 10 propane unit mounted on the salon bulkhead.

SAILS & RIGGING

For sailing the mainsail has a mainsheet traveler at the aft of the center cockpit, two winches for the genoa sheets and one for the mainsheet, plus two winches for the main and genoa halyards. The boat is equipped with a topping lift and slab reefing.

- 2005 Genoa 135
- Main sail with sail cover

Reviews

The Endeavour 40 "is a big, comfortable cruiser intended for extended trips. Note that both fuel and water capacity are high. Ballast/displacement ratio is 36 percent. The cockpit, like most center cockpits, is high and therefore dry." Richard Sherwood

Dinghy

Dinghy not included in sale. Dingy aboard does not convey

Exclusions

Owner's personal belongings.

Disclaimer

The Company offers the details of this vessel or yacht in good faith but cannot guarantee or warrant the accuracy of this information nor warrant the condition of the vessel. A buyer should instruct his representatives, agents, or his surveyors, to investigate such details as the buyer desires validated. This vessel or yacht is offered subject to prior sale, price change, or withdrawal without notice.

PHOTOS

Endeavour 40 Center Cockpit



Endeavour 40 Center Cockpit



Endeavour 40 CC main salon



Endeavour 40 CC Full galley



cockpit helm station



wheel and compass



view forward from cockpit



view aft from cockpit



lewmar winch



lewmar winch



lewmar winch



roller furling



Endeavour 40 Center Cockpit foredeck



Endeavour 40 windlass



foredeck

Endeavour 40 Center Cockpit foredeck port



Endeavour 40 Center Cockpit starboard foredeck

Endeavour 40 Center Cockpit foredeck



canvas bimini and mainsail cover



mast and winch



Endeavour 40 CC port side deck



Endeavour 40 Center Cockpit port



Endeavour 40 Center Cockpit starboard



Endeavour 40 CC starboard side deck



Endeavour 40 Center Cockpit bow starboard



Endeavour 40 Center Cockpit starboard



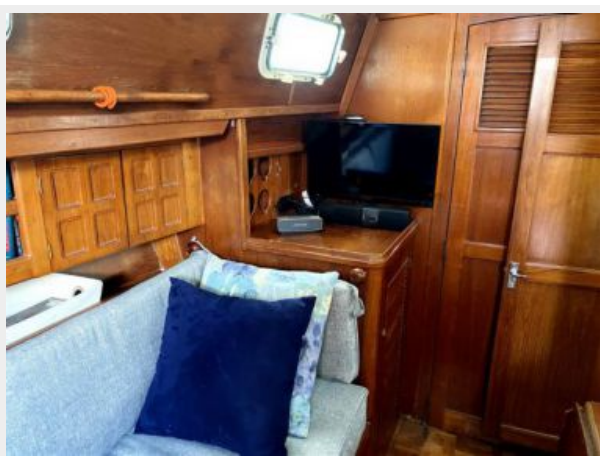
Main saloon center folding table



port saloon settee



port saloon TV, bulkhead, storage



port saloon settee



starboard saloon settee



Large aft cabin double



hanging locker and stowage in aft cabin



head 1 with shower, sink, commode



head 1 with shower, sink, commode



starboard view forward from aft cabin



navigation station starboard



galley with SS sink, oven/stove, toaster, refrigerator & microwave



galley counters and storage



gas 3-burner stove top



gas oven



Head 2 with shower, sink, commode



v-berth forward



V-berth forward



v-berth port with custom mattress topper



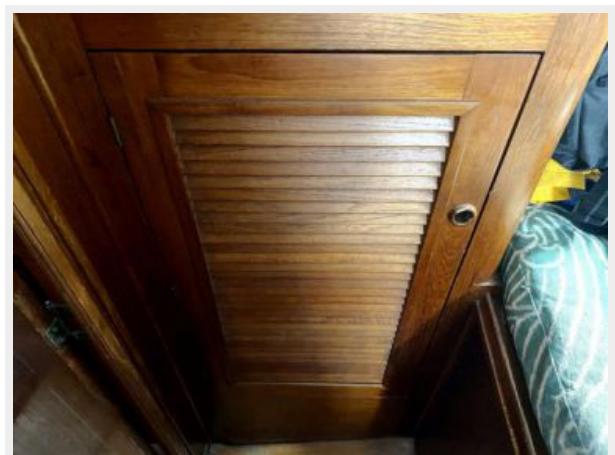
anchor locker



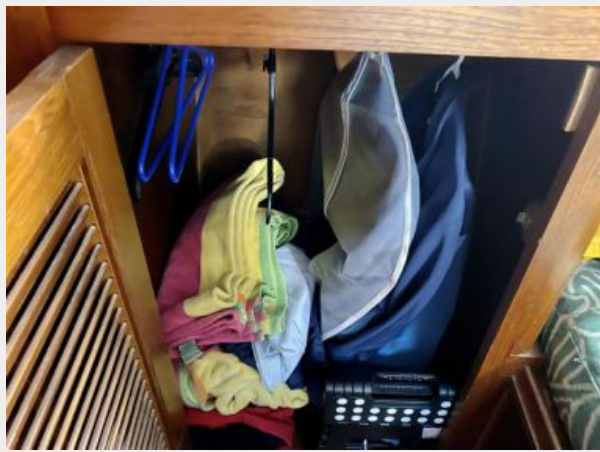
v-berth starboard



v-berth hanging locker



v-berth hanging locker



v-berth storage



AC/DC control panel



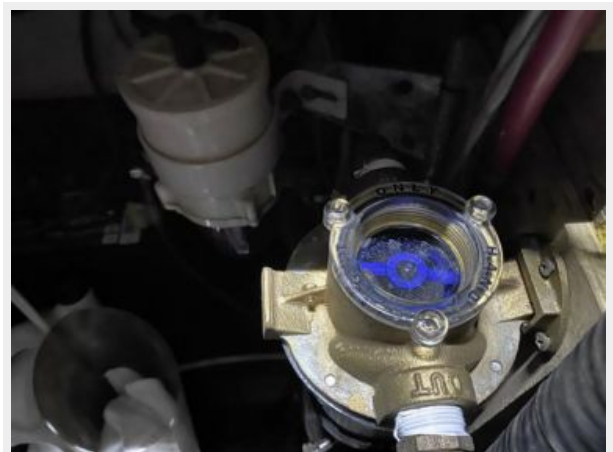
30-amp battery charger



engine compartment



engine compartment



Perkins 4-108 50 HP Diesel engine



Perkins 4-108 50 HP Diesel engine



endeavour_40_layout



CONTACTS

Andrey Shestakov, leading yacht broker of the sales department of Shestakov Yacht Sales Inc. Shestakov Yacht Sales Inc., the official representative of the Miami/Fort Lauderdale FL headquarters.

Contact details

Email: andrey@shestakovyachtsales.com

Web: shestakovyachtsales.com/en/

Telephones

USA: +1(954)274-4435

Office hours

Monday – Saturday: **9:00 - 21:00** EDT

Sunday: **closed**

Address



Harbour Towne Marina, 850 NE 3rd St,
STE 213, Dania, FL 33004