

## AKI MARU — NAVIGATOR



**Builder:** NAVIGATOR

**Year Built:** 1994

**Model:** Motor Yacht

**Price:** PRICE ON APPLICATION

**LOA:** 48' (14.63mm)

**Beam:** 15

**Max Draft:** 4' 5" (1.35mm)

Our experienced yacht broker, Andrey Shestakov, will help you choose and buy a yacht that best suits your needs **Aki Maru — NAVIGATOR** from **our catalogue**. Presently, at **Shestakov Yacht Sales Inc.**, we have a wide variety of yachts available on **our sale's list**. We also work in close contact with all the big **yacht manufacturers** from all over the world.

If you would like to buy a yacht **Aki Maru — NAVIGATOR** or would like help answering any questions concerning purchasing, selling or chartering a yacht, please call **+1(954)274-4435**

# TABLE OF CONTENTS

TABLE OF CONTENTS	2
SPECIFICATIONS	5
Overview	5
Basic Information	5
Dimensions	5
Speed, Capacities and Weight	5
Accommodations	5
Hull and Deck Information	6
Engine Information	6
PHOTOS	7
Exterior	7
Exterior	7
Exterior	7
Exterior	7
Salon looking forward	7
Salon looking aft	7
Salon port, Settee	8
Salon port / aft	8
Salon port / forward	8
Salon starboard	8
Salon mini Fridge, TV, Stereo, DVD	8
Salon starboard / aft	8
Galley	9
Galley Fridge / Freezer, Stove	9
Galley looking forward to helm station	9
Dinette looking forward	9
Dinette	10
Lower Helm	10

LH Auto Pilot, Tridata (depth, speed, trip)	10
Master Stateroom (MSR)	10
Master Stateroom (MSR)	10
MSR Port	10
MSR Hanging Locker	11
MSR Starboard	11
MSR / Starboard Head / Shower	11
MSR AC/Heat, Heat, CO Alarm	11
Starboard Head	12
Starboard Head	12
Port Stateroom	12
Port Stateroom	12
Port Stateroom	12
Port Stateroom	12
Port Head / Shower	13
Port Head	13
Starboard Stateroom	13
Starboard Stateroom	13
Starboard Stateroom Hanging Locker	14
Flybridge Helm Station	14
Flybridge Helm	14
Flybridge starboard seat	14
Flybridge aft seating	14
Radar/Chart Plotter, GPS	14
Auto Pilot	15
Tridata (Depth, Speed, Trip)	15
GPS Chart Plotter	15
Bow pulpit / Anchor	15
Electric windlass	15

---

Cockpit	15
Stern / Davit	16
Stern	16
CONTACTS	17
Contact details	17
Telephones	17
Office hours	17
Address	17

---

# SPECIFICATIONS

---

## Overview

---

NEW LISTING! "Aki Maru" is a three stateroom / two head 1994 48' Pilothouse. She offers a very open salon with galley to starboard, lower helm port, dinette port. The staterooms are all forward with master stateroom forward, and two guest staterooms mid-cabin. The flybridge and cockpit are fully enclosed with canvas and isinglass. Powered with twin Volvo Penta diesel engines, has a Kohler 8kw generator, Radar, Chart Plotters, Auto Pilot, GPS, and Tridata Depth / Speed navigational equipment. She is currently berthed at our sales dock for easy viewing. Contact listing agent Barney Fie to set up an appointment.

## Basic Information

---

**Category:** Motor Yacht

**Sub Category:** Pilothouse

**Model Year:** 1994

**Year Built:** 1994

## Dimensions

---

**LOA:** 48' (14.63mm)

**Beam:** 15

**Max Draft:** 4' 5" (1.35mm)

## Speed, Capacities and Weight

---

**Water Capacity:** 130 Gallons

**Holding Tank:** 70 Gal Gallons

**Fuel Capacity:** 500 Gal Gallons

## Accommodations

---

**Total Cabins:** 3

**Total Heads:** 2

---

## Hull and Deck Information

---

**Hull Material:** Fiberglass

---

## Engine Information

---

**Engines:** 2

**Manufacturer:** Volvo Penta

**Engine Type:** Inboard

**Fuel Type:** Diesel

# PHOTOS

**Exterior**



**Exterior**



**Exterior**



**Exterior**



**Salon looking forward**



**Salon looking aft**





**Salon port, Settee**



**Salon port / aft**



**Salon port / forward**



**Salon starboard**



**Salon mini Fridge, TV, Stereo, DVD**



**Salon starboard / aft**





**Galley**



**Galley Fridge / Freezer, Stove**



**Galley looking forward to helm station**



**Dinette looking forward**



**Dinette**



**Lower Helm**



**LH Auto Pilot, Tridata (depth, speed, trip)**



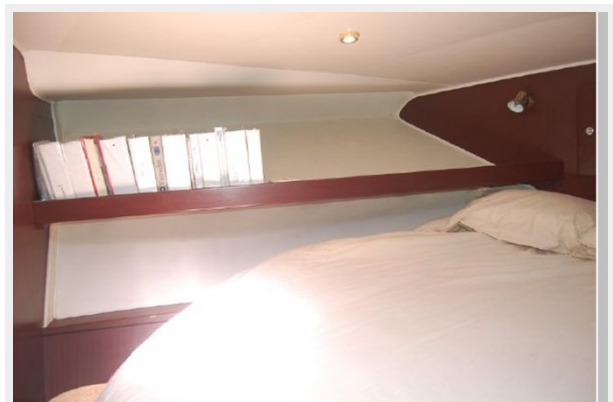
**Master Stateroom (MSR)**



**Master Stateroom (MSR)**



**MSR Port**



### MSR Starboard



### MSR Hanging Locker



### MSR / Starboard Head / Shower

#### MSR AC/Heat, Heat, CO Alarm





**Starboard Head**



**Starboard Head**



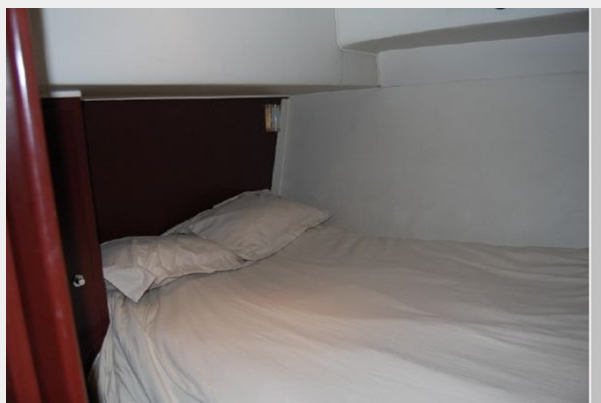
**Port Stateroom**



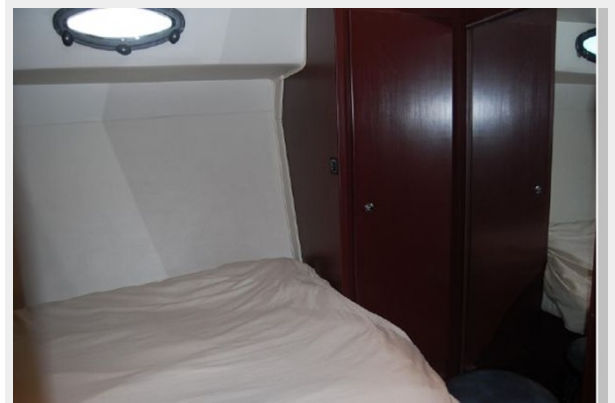
**Port Stateroom**



**Port Stateroom**



**Port Stateroom**



**Port Head / Shower**



**Port Head**



**Starboard Stateroom**



**Starboard Stateroom**



### Starboard Stateroom Hanging Locker



### Flybridge Helm Station



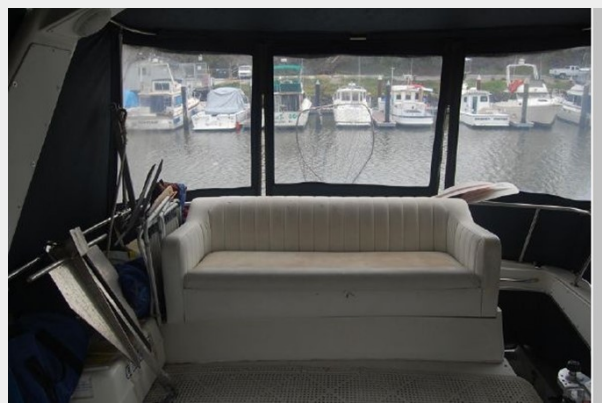
### Flybridge Helm



### Flybridge starboard seat



### Flybridge aft seating



### Radar/Chart Plotter, GPS





**Auto Pilot**



**Tridata (Depth, Speed, Trip)**



**GPS Chart Plotter**



**Bow pulpit / Anchor**



**Electric windlass**



**Cockpit**



**Stern / Davit**



**Stern**



# CONTACTS

---

Andrey Shestakov, leading yacht broker of the sales department of Shestakov Yacht Sales Inc. Shestakov Yacht Sales Inc., the official representative of the Miami/Fort Lauderdale FL headquarters.

## Contact details

---

Email: **andrey@shestakovyachtsales.com**

Web: [shestakovyachtsales.com/en/](https://shestakovyachtsales.com/en/)

## Telephones

---

USA: **+1(954)274-4435**

## Office hours

---

Monday – Saturday: **9:00 - 21:00** EDT

Sunday: **closed**

## Address

---



Harbour Towne Marina, 850 NE 3rd St, STE 213, Dania, FL 33004