

SEA PAL — FERRETTI YACHTS



Builder: FERRETTI YACHTS

LOA: 76' 0" (23.16m)

Year Built: 2005

Beam: 19' 6" (5.94m)

Model: Motor Yacht

Max Draft: 5' 8" (1.73m)

Price: PRICE ON APPLICATION

Location: United States

Our experienced yacht broker, Andrey Shestakov, will help you choose and buy a yacht that best suits your needs **Sea Pal — FERRETTI YACHTS** from our catalogue. Presently, at Shestakov Yacht Sales Inc., we have a wide variety of yachts available on our sale's list. We also work in close contact with all the big yacht manufacturers from all over the world.

If you would like to buy a yacht **Sea Pal — FERRETTI YACHTS** or would like help answering any questions concerning purchasing, selling or chartering a yacht, please call **+1(954)274-4435**

TABLE OF CONTENTS

TABLE OF CONTENTS	2
SPECIFICATIONS	6
Overview	6
Basic Information	6
Dimensions	6
Speed, Capacities and Weight	6
Accommodations	6
Hull and Deck Information	7
Engine Information	7
DETAILED INFORMATION	8
Salon	8
Galley - Up	8
Dining Room	8
Master Stateroom	9
Master Head	9
Forward VIP Stateroom	9
VIP Head	10
Guest Cabin, Port	10
Guest Head, Port	11
Guest Cabin, Starboard	11
Guest Head, Starboard	11
Crew Quarters Companionway	11
Crew Quarters	12
Crew Head	12
Flybridge	12
Electronics, Upper Station	13
Pilothouse	13
Electronics, Lower Station on Pilothouse	14

Electrical System	15
Mechanical Equipment	15
Hull and Deck	16
Disclaimer	17
Exclusions	18
Disclaimer	18
PHOTOS	19
2_DJI_0048-HDR	19
3_DJI_0069-HDR	19
4_DJI_0072	19
5_DJI_0088	19
6_DJI_0097-HDR	19
7_DJI_0100-HDR	19
8_DJI_0105-HDR	20
9_DJI_0106-HDR	20
10_DJI_0115-HDR	20
11_DJI_0124-HDR	20
12_DJI_0148-HDR	20
13_Bow1	20
14_Bow2	21
15_Bow3	21
16_Bridge1	21
17_Bridge2	21
19_Aftdeck3	21
18_AftDeck1	21
20_Aftcontrolls	22
21_Aftdeck5	22
22_Aftdeck4	22
23_Aftsink	22

24_Aftdeck2	22
25_Salon3	22
26_Salon1	23
27_Salon2	23
28_Salon4	23
29_Dayhead1	23
30_Dayhead2	23
31_Dayhead3	23
32_Dining1	24
33_Dining2	24
34_Dining3	24
35_Galley1	24
37_Hall2	24
36_Galley2	24
38_Master1	25
39_Master2	25
40_Master3	25
41_Master4	25
43_Masterhead2	25
42_Masterhead1	25
45_Masterhead4	26
44_Masterhead3	26
46_VIP1	26
47_VIPhead1	26
48_VIPhead2	27
49_Hall1	27
50_Stbdcabin1	27
51_Stbdcabin2	27
52_Crew1	28

53_Crew2	28
54_Crew3	28
55_Flybridge2	28
56_Flybridge5	28
57_Flybridge6	28
58_Flybridge7	29
59_Flybridge8	29
60_Flybridge9	29
61_Flybridge3	29
63_Flybridge4	29
64_Port	29
65_Stbd	30
66_Engine1	30
67_Engine2	30
68_Engine3	30
69_Engine4	30
CONTACTS	31
Contact details	31
Telephones	31
Office hours	31
Address	31

SPECIFICATIONS

Overview

With beautiful lines and elegant styling and accommodations, **Sea Pal** is perfectly suited to cure your cruising itch with safety, comfort, and class. Designed to excel in a broad range of missions from a sunset cruise with friends, to exploring the far reaches of your yachting dreams. Both of **Sea Pal's** owners have been generous with her care. Captain maintained, never chartered, fast and fully serviced. Always polished to perfection, excellent teak decks, comprehensive CAT service in 2018 including new aftercoolers. Four en suite staterooms plus two crew staterooms. Huge flybridge and exciting performance.

Basic Information

Category: Motor Yacht

Model Year: 2005

Year Built: 2005

Country: United States

Dimensions

LOA: 76' 0" (23.16m)

Beam: 19' 6" (5.94m)

Max Draft: 5' 8" (1.73m)

Speed, Capacities and Weight

Displacement: 119070 Pounds

Water Capacity: 275 Gallons

Fuel Capacity: 1554 Gallons

Accommodations

Total Cabins: 4

Total Heads: 5

Hull and Deck Information

Hull Material: Fiberglass

Engine Information

Engines: 2

Manufacturer: Caterpillar

Model: C30

Engine Type: Inboard

Fuel Type: Diesel

DETAILED INFORMATION

Salon

- Large leather U-shaped sofa
- Flat screen TV concealed in pop-up cabins
- Coffee table with storage
- Bose remote control entertainment system with DVD/ Stereo tuner
- Overhead lighting
- Tinted salon windows
- Custom curtains and fabric blinds
- Custom carpet throughout
- Bose (5) speaker surround sound system plus sub woofer
- Stainless steel aft bulkhead door with tinted glass inserts and port side foldaway glass window

Galley - Up

- Excellent counterspace and storage below & overhead
- GE microwave oven
- Stove exhaust fan with outside ducting
- GE side-by-side refrigerator & freezer with door water and ice
- Double stainless steel sink
- Sliding privacy doors from galley to dining area and galley to pilothouse
- Miele dishwasher
- Four burner electric cooktop
- Granite countertops
- Side deck access door
- Tinted windows

Dining Room

- Gloss varnished teak dining table
- Leather L-shaped banquette and (4) additional leather dining chairs
- Tinted windows
- Privacy shade
- Overhead lighting
- A/C controls
- Excellent storage cabinets
- Direct access to galley with privacy door
- Stairwell to flybridge

Master Stateroom

- Centerline queen bed with custom mattress
- Custom mattress shams and bedspreads
- Storage drawers under bed
- Concealed flat screen TV
- Overhead relief panels with surround lighting
- Bose remote control entertainment system with DVD/ stereo tuner
- Port and starboard nightstand tables with power outlets, light switches and storage drawers
- Wall mounted lamps at night stands
- Starboard side dual leather settees with table between
- Port side cabinets with makeup console and leather stool
- Walk-in hanging wardrobe forward to starboard
- Emergency exit from ceiling
- Enlarged factory hull windows, port and starboard with covers
- A/C control display
- (4) Stainless steel opening ports
- Combination safe with key
- Overhead lighting
- Recessed rope lighting
- Upholstered headboard
- Private entrance head with shower aft to port

Master Head

- Marble countertops
- Large custom tiled shower with frosted privacy door
- Stainless steel opening port
- Lower and overhead cabinetry
- Overhead lighting
- Teak flooring
- Porcelain electric toilet
- Single porcelain undermount sink

Forward VIP Stateroom

- Centerline queen bed with custom mattresses, shams, and bedspread
- Headboard with mirror and fabric panels
- Storage underneath bed
- Cabinets and drawers
- Deck hatch with cover
- Curtains

- Dressing table
- Overhead lighting
- Air/ heat controls
- Recessed rope lighting
- TV with DirecTV receiver
- Stereo with CD player and speakers
- Spacious hanging lockers port and starboard
- Shelves and storage cabinets port and starboard
- Reading lamps
- (2) Stainless steel opening port holes with covers
- Storage drawers

VIP Head

- Very spacious with excellent storage
- Porcelain toilet with holding tank monitor
- Marble countertop
- Undermount porcelain sink
- Mirrored panels accented with lacquered cabinets
- Spacious shower stall with partition
- Stainless steel opening port light
- AC plug
- Overhead lighting
- Linen closet
- Solid teak flooring

Guest Cabin, Port

- Twin beds with custom mattresses, shams, and bedspreads
- Recessed rope lighting
- Centerline nightstand table with drawer
- Custom curtains
- Overhead lighting
- Stainless steel port lights with covers
- TV with satellite TV receiver
- Stereo with CD player and speakers
- Large storage drawers under beds
- Air and heat control
- Hanging locker
- Storage drawers under beds

Guest Head, Port

- Porcelain toilet with holding tank monitor
- Marble countertops
- Undermount porcelain sink
- Mirrors surrounded with lacquered cabinetry
- Stainless steel port light
- Cabinet with shelves
- Electrical plug
- Overhead lighting
- Shower stall with privacy partition
- Solid teak flooring

Guest Cabin, Starboard

- Twin beds with custom mattresses, shams, and bedspreads
- Recessed rope lighting
- Centerline nightstand table with drawer
- Custom curtains
- Overhead lighting
- Stainless steel port lights with covers
- TV with satellite TV receiver
- Stereo with CD player and speakers
- Large storage drawers under bed
- Air and heat control

Guest Head, Starboard

- Porcelain toilet with holding tank monitor
- Marble countertops
- Undermount porcelain sink
- Mirrors surrounded with lacquered cabinetry
- Stainless steel port light
- Cabinet with shelves
- Electric plug
- Overhead lighting
- Shower stall with privacy partition
- Solid teak flooring

Crew Quarters Companionway

- Direct access from port side aft deck
- Primary breaker panel AC and DC
- Remote engine room fire system release
- Battery on/off switches and manual parallel switch
- Fuel shut down valves
- Miele clothes washer
- Miele clothes dryer
- Boarding ladder storage

Crew Quarters

- Separate private captain and mates cabins
- Air and heat controls in both cabins
- Captain with single mattress, pillow sham, and spread
- Mates with upper/lower bunks
- Both cabins have TV
- Both cabins have stereo with speakers
- Hanging lockers and storage drawers
- Stainless steel open port lights

Crew Head

- Toilet with tank level monitor
- Molded sink with shower
- Storage cabinet
- Stainless steel opening port light

Flybridge

- Hydraulic power assist steering
- CAT electronic engine controls
- CAT engine alarm system
- Electronics panel with electric opening
- Helm seating for two with cover
- Bar cabinet with hot and cold water sink, locker storage, electric grill and Isotherm refrigerator with ice trays
- VDO rudder angle indicator
- Two seating groups with cushions, covers, and tables
- Helm cover
- CAT digital engine displays
- Raised sunbathing area with cushions and cover

- Stainless steel railings
- Tinted Venturi windshield
- Nav lights
- Fiberglass radar arch with radar mast
- Varnished cocktail/ dinner table at settee
- (2) Stairwells from bridge for aft deck and forward deckhouse area access
- Airhorn with compressor
- Bilge pump display with alarm
- Bensenzoni hydraulic dinghy davit with cover
- Novurania 13' hard bottom inflatable with 50HP Yamaha four stroke outboard
- (2) Separate white bimini tops
- Compass, lighted
- Bow and stern thruster controls
- Anchor windlass controls
- Engine synchronizer
- Main engine start/stop switches
- CHC digital anchor chain counter
- Deck courtesy lighting
- Frigibar matching gelcoat freezer
- Trim tab controls
- (2) Six-man EV life rafts in cannisters certified thru April 2019 with hydrostatic releases

Electronics, Upper Station

- Garmin 4212 GPS plotter with radar and independent antenna (Note: There are a total of (4) completely independent Garmin plotters aboard)
- Simrad AP22 autopilot remote head
- EPIRB, mounted
- Stainless steel arch mounted manual searchlight
- ITT Jabsco remote search light control panel
- Furuno RD30 digital depth/ knot log, water temp
- ICOM IC-M502 VHF radio
- Yacht controller wireless docking system

Pilothouse

- Complete helm station
- Windshield wipers with washers with intermittent features
- CAT electronic engine controls
- CAT electric digital instrumentation
- CAT engine alarm system
- Hydraulic power steering

- Electrical breaker panel with volt and amp meters
- (2) Generator monitor packages
- Bow and stern thruster controls
- Tinted windshield
- Electric helm seat, port
- Starboard double passenger seat with storage under
- A/C controls display
- Compass, lighted
- CAT electronic engine controls
- A/C Tempered Water Logic chilled water control panel
- Anchor windlass controls
- Fire system switch with override
- Book shelf
- Chart storage compartment
- LED lighting
- White/ red ceiling lights
- Landline phone connect
- Fresh water tank monitor
- Fuel tank level gauge
- Graphic vessel alarms and pump indicator panel
- Stainless steel windshield frame
- Storage cabinet
- Port and starboard opening windows
- Privacy bulkhead between pilothouse and dining area with privacy blinds, glass and varnished teak
- Burlled dash panel with black vinyl accents
- (4) Mounted Sat TV receivers
- VDO rudder angle indicator
- Engine synchronizer
- CHC digital anchor chain counter
- Kenwood stereo with speakers
- 12 Vac plug
- VDO fuel gauge
- VDO fresh water gauge
- Port side deck access door

Electronics, Lower Station on Pilothouse

- (2) Garmin 4212 GPS plotters with radar and independent antennas
- Garmin 4208 GPS plotter
- ICOM I-CM 602 VHF radio
- Furuno RD30 digital depth/ knot log tied to Furuno and Garmin transducers
- Simrad AP22 autopilot

- ITT Jabsco remote search light
- Color Quad camera switching system with (4) cameras; (3) on arch, (1) in engine room displays on Garmin screens both stations
- DirecTV with (4) receivers and also displays TV on Garmin in pilothouse and flybridge
- TracVision 4HP Sat TV system

Electrical System

- 100 amp shore power with Cablemaster aft
- 50 amp shore power connector with cable
- (2) 20 Kw Kohler generators in hush boxes; (1) with 2,180 hrs, (1) with 2,184 hrs
- 12V/24V DC systems
- 120/240V AC systems
- (3) Converters/ auto battery charging systems

Mechanical Equipment

- Twin Caterpillar C30A electronically controlled engines at 1550HP each w/ 2,260 original hours
- Main engine complete 2000 hours service 2018 including new aftercoolers
- (2) Kohler 20kW generators with sound shield with 2,180 hours
- CAT optional engine room mounted manual gauge packages
- CAT engine room mounted alarm system with emergency engine stops
- Single fiberglass fuel tank; 1,554 gallons
- Single fiberglass water tank; 275 gallon capacity
- (5) Auto/manual bilge pumps
- Bilge alarm system for fire and high water
- Dual Racor main engine fuel filters with vacuum gauges
- Single Racor generator fuel filters with vacuum gauge
- Electric fuel tank gauge and sight gauge
- Electric water level tank gauge and sight gauge
- Black water tank
- Grey water tank
- Engine room fresh water outlet
- Oil change system for main engines, transmission and generators
- Engine room AC & DC lighting
- Auto/ Manual fire suppression system
- Hand held fire extinguishers located in each cabin and every area of vessel, current certification
- Engine room SS work bench with vice
- 24V DC engine room blower system with auto fire shut off
- Engine room fully baffled air intakes with auto close for fire system

- Main engine raw water strainers
- Generator, air conditioning, raw water strainers
- Engine room smoke and gas detectors
- Air conditioning and grey water sumps with auto pump out
- Manual and electric battery parallel switches
- Hot water heater 220 vac with 28 gallon capacity
- Dripless shaft seals
- Dripless rudder shaft seals
- Battery disconnect switches
- Central bonding system
- Hydraulic power assist steering
- (5) Individual shower sump basins with auto pump out
- Separate engine and generator battery charging systems
- 24v Main engine starting systems
- 12v Generator starting batteries
- Land line and cable TV shore plug system
- (3) Pilothouse windshield wiper/ washer system with intermittent feature
- Airsep diesel intake filter and crankcase breather system
- ZF Transmissions, V-Drive
- 120 VAC emergency bilge pump system with manifold to (7) different bilges and tanks
- (2) Remote (engine room and pilothouse) chilled water AC compressor control panel
- Side power bow and stern thrusters, 24V
- Waste tank level indicator in each head compartment

Hull and Deck

- Dual stainless steel integral anchor rollers
- Fresh water washdown in anchor locker
- Foredeck (trunk cabin) large recessed sunpad with cover
- Foredeck controls dual Lofrans 24 volt anchor windlasses with wildcats
- Dual foredeck anchor locker hatches
- Dual articulating plow type anchors with 300' chain each
- Center-line integral stainless steel anchor roller
- Novurania 13' hard bottom inflatable dinghy with 50HP Yamaha four stroke outboard, 56 hrs total since new (serviced annually).
- Triple foredeck cleats
- Foredeck hatch
- Marquipt "tide ride" seven-step boarding ladder
- Teak decking, foredeck and side decks, NEW 2018
- Teak decking, aft deck
- Port side deck access door to galley
- 100 amp shore power cord with Glendenning cabledmaster
- Integral swim platform with integrated spare propeller storage area with hydraulic access

and sump pump

- Removable dinghy cradle for swim platform
- Flybridge dinghy davit, Bensenzoni hydraulic with cover
- Radar arch with radar mast
- Spare set of five blade propellers, fully serviced and balances, stored in lazarette
- Dinghy VHF radio and stereo
- Aft deck settee with throw pillows and cover
- Aft deck gloss varnished fixed expandable table with integrated storage and (4) additional chairs
- Aft deck engine controls with thruster controls
- Aft deck direct access to crew quarters
- Aft deck direct access to engine room (separate from deck hatch)
- Transom hot and cold fresh water shower
- Ice maker aft deck Raritan stainless steel
- Swim platform with hydraulic folding swim ladder
- Swim platform pop-up cleats
- Aft deck molded/ integral stairwell to flybridge
- Stainless and fiberglass steps from aft deck to swim platform with safety rail
- See thru removable windshield cover
- Aft deck stainless steel line haulers leading to concealed warping windlass and stainless steel cleats, port and starboard
- Stainless steel rub rail
- Aft deck overhead lighting
- Deck courtesy lighting
- Engine room has fore and aft watertight bulkheads
- Bensenzoni hydraulic passarelle
- Aft deck mounted ships hull
- Engine room overhead hatch to aft deck
- (2) 30" Life rings mounted in factory stainless steel cradle on bridge
- Aft deck/ side deck concealed rope courtesy lighting
- Aft deck concealed sink with hot and cold water
- Aft deck insulated drink box
- Deckhouse carpet runners
- (7) Fenders
- Coast Guard safety package with life jackets

Disclaimer

The Company offers the details of this vessel in good faith but cannot guarantee or warrant the accuracy of this information nor warrant the condition of the vessel. A buyer should instruct his agents, or his surveyors, to investigate such details as the buyer desires validated. This vessel is offered subject to prior sale, price change, or withdrawal without notice.

Exclusions

Owner's personal belongings.

Disclaimer

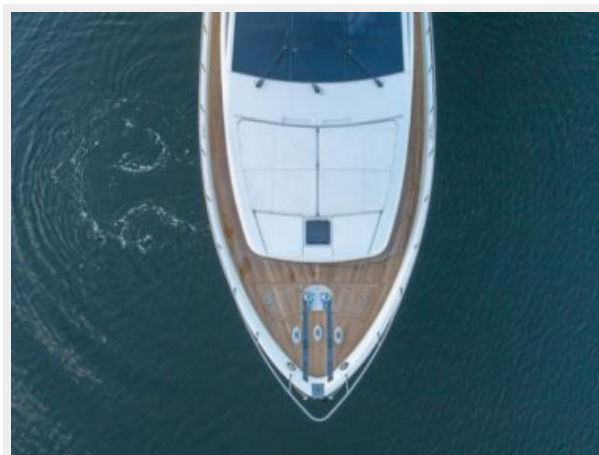
The Company offers the details of this vessel or yacht in good faith but cannot guarantee or warrant the accuracy of this information nor warrant the condition of the vessel. A buyer should instruct his representatives, agents, or his surveyors, to investigate such details as the buyer desires validated. This vessel or yacht is offered subject to prior sale, price change, or withdrawal without notice.

PHOTOS

2_DJI_0048-HDR



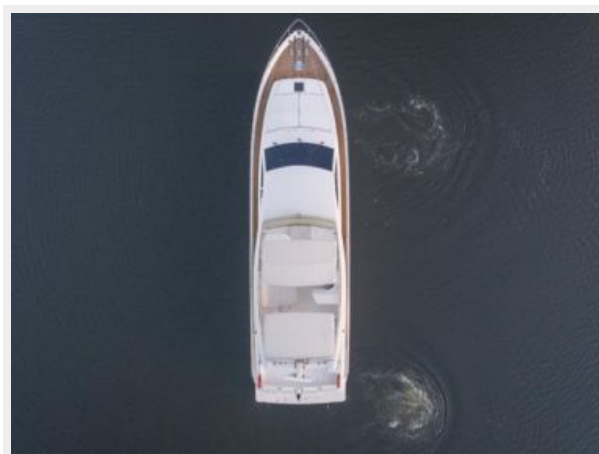
3_DJI_0069-HDR



4_DJI_0072



5_DJI_0088



6_DJI_0097-HDR



7_DJI_0100-HDR



8_DJI_0105-HDR



9_DJI_0106-HDR



10_DJI_0115-HDR



11_DJI_0124-HDR



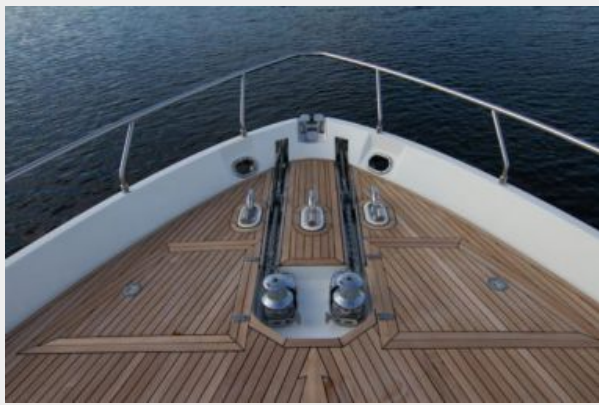
12_DJI_0148-HDR



13_Bow1



14_Bow2



15_Bow3



16_Bridge1



17_Bridge2



18_AftDeck1



19_Aftdeck3



20_Aftcontrols



21_Aftdeck5



22_Aftdeck4



23_Aftsink



24_Aftdeck2



25_Salon3



26_Salon1



27_Salon2



28_Salon4



29_Dayhead1



30_Dayhead2



31_Dayhead3



32_Dining1



33_Dining2



34_Dining3



35_Galley1



36_Galley2



37_Hall2



38_Master1



39_Master2



40_Master3



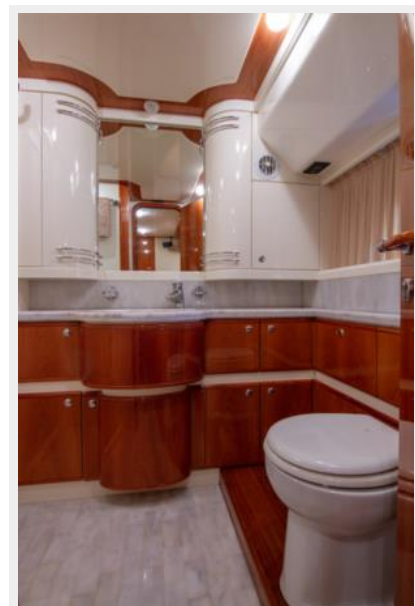
41_Master4



42_Masterhead1



43_Masterhead2



44_Masterhead3



45_Masterhead4



46_VIP1



47_VIPhead1



48_VIPhead2



49_Hall1



50_Stbdcabin1



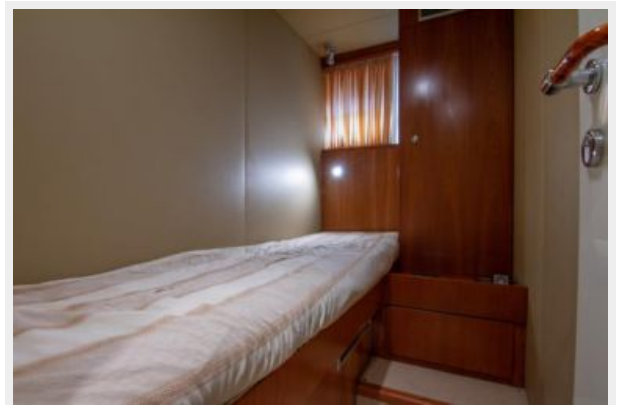
51_Stbdcabin2



52_Crew1



53_Crew2



54_Crew3



55_Flybridge2



56_Flybridge5



57_Flybridge6



58_Flybridge7



59_Flybridge8



60_Flybridge9



61_Flybridge3



63_Flybridge4



64_Port



65_Stbd



66_Engine1



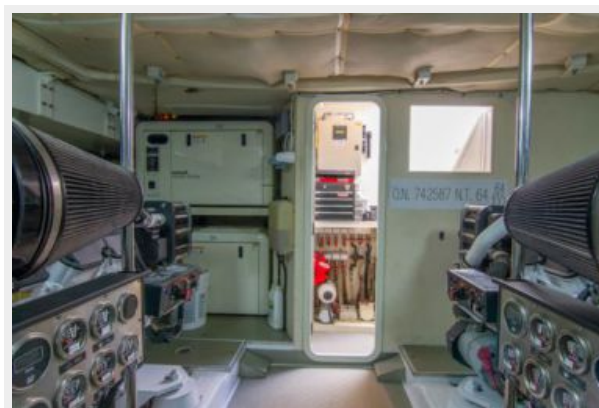
67_Engine2



68_Engine3



69_Engine4



CONTACTS

Andrey Shestakov, leading yacht broker of the sales department of Shestakov Yacht Sales Inc. Shestakov Yacht Sales Inc., the official representative of the Miami/Fort Lauderdale FL headquarters.

Contact details

Email: **andrey@shestakovyachtsales.com**

Web: shestakovyachtsales.com/en/

Telephones

USA: **+1(954)274-4435**

Office hours

Monday – Saturday: **9:00 - 21:00 EDT**

Sunday: **closed**

Address



Harbour Towne Marina, 850 NE 3rd St,
STE 213, Dania, FL 33004