

WEST WIN



Year Built: 2001

Model: Sport Yacht

Price: PRICE ON APPLICATION

LOA: 43' (13.11mm)

Beam: 15.66

Max Draft: 4' 4" (1.32mm)

Cruise Speed: 19.12 Knots Kts. (22 MPH)

Max Speed: 23.46 Knots Kts. (27 MPH)

Our experienced yacht broker, Andrey Shestakov, will help you choose and buy a yacht that best suits your needs **West Win** — n/a from our catalogue. Presently, at Shestakov Yacht Sales Inc., we have a wide variety of yachts available on our sale's list. We also work in close contact with all the big yacht manufacturers from all over the world.

If you would like to buy a yacht **West Win** — n/a or would like help answering any questions concerning purchasing, selling or chartering a yacht, please call **+1(954)274-4435**

TABLE OF CONTENTS

TABLE OF CONTENTS	2
SPECIFICATIONS	3
Overview	3
Basic Information	3
Dimensions	3
Speed, Capacities and Weight	3
Accommodations	3
Hull and Deck Information	4
Engine Information	4
PHOTOS	5
CONTACTS	13
Contact details	13
Telephones	13
Office hours	13
Address	13

SPECIFICATIONS

Overview

AT OUR DOCKS!! If you are looking for a yacht that offers no compromises, no middle-of-the-road concessions this Riviera 43 Convertible is a boat you'll own with pride and confidence. She offers a comfortable salon with L-shaped settee and dinette, mezzanine level full galley, two staterooms with ensuite heads, spacious cockpit, and large flybridge. She is powered by twin Cummins 450C diesel engines and has an equipment list that includes, but not limited to, generator, air conditioning, water maker, dinghy, life raft, outriggers, downriggers, complete electronics package, electronic engine controls, and designer appointed interior. She has been meticulously maintained, and is turnkey ready. Work has been complete by Stem To Stern & Key Largo on West Win. Details are available upon request.

Basic Information

Category: Sport Yacht

Sub Category: Convertible

Model Year: 2001

Year Built: 2001

Dimensions

LOA: 43' (13.11mm)

Beam: 15.66

Max Draft: 4' 4" (1.32mm)

Speed, Capacities and Weight

Cruise Speed: 19.12 Knots Kts. (22 MPH)

Max Speed: 23.46 Knots Kts. (27 MPH)

Water Capacity: 163 Gallons

Fuel Capacity: 810 Gal Gallons

Accommodations

Total Cabins: 2

Total Heads: 2

Hull and Deck Information

Hull Material: Fiberglass

Engine Information

Engines: 2

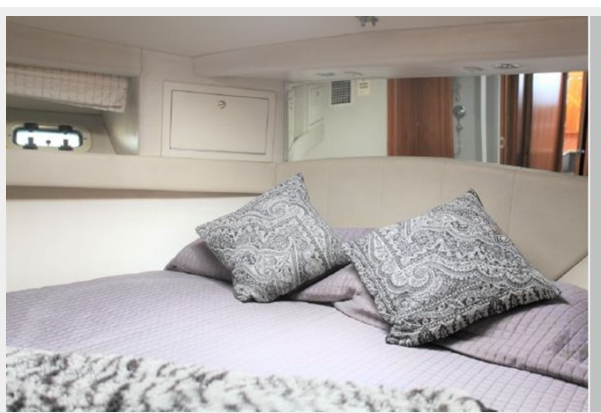
Manufacturer: Cummins

Engine Type: Inboard

Fuel Type: Diesel

PHOTOS

















CONTACTS

Andrey Shestakov, leading yacht broker of the sales department of Shestakov Yacht Sales Inc. Shestakov Yacht Sales Inc., the official representative of the Miami/Fort Lauderdale FL headquarters.

Contact details

Email: andrey@shestakovyachtsales.com

Web: shestakovyachtsales.com/en/

Telephones

USA: +1(954)274-4435

Office hours

Monday – Saturday: **9:00 - 21:00** EDT

Sunday: **closed**

Address



Harbour Towne Marina, 850 NE 3rd St,
STE 213, Dania, FL 33004