

NATIVE — HERRESHOFF



Builder: HERRESHOFF

Year Built: 1970

Model: Other

Price: PRICE ON APPLICATION

Location: United States

LOA: 38' 0" (11.58m)

Beam: 11' 0" (3.35m)

Max Draft: 5' 2" (1.57m)

Cruise Speed: 5 Kts. (6 MPH)

Max Speed: 7 Kts. (8 MPH)

Our experienced yacht broker, Andrey Shestakov, will help you choose and buy a yacht that best suits your needs **Native — HERRESHOFF** from our catalogue. Presently, at Shestakov Yacht Sales Inc., we have a wide variety of yachts available on our sale's list. We also work in close contact with all the big yacht manufacturers from all over the world.

If you would like to buy a yacht **Native — HERRESHOFF** or would like help answering any questions concerning purchasing, selling or chartering a yacht, please call **+1(954)274-4435**

TABLE OF CONTENTS

TABLE OF CONTENTS	2
SPECIFICATIONS	4
Overview	4
Basic Information	4
Dimensions	4
Speed, Capacities and Weight	4
Accommodations	4
Hull and Deck Information	5
Engine Information	5
DETAILED INFORMATION	6
MAIN DESCRIPTION	6
38' HERRESHOFF DECK AND HULL	6
38' HERRESHOFF COCKPIT AND NAVIGATION	6
38' HERRESHOFF ACCOMMODATIONS AND HEAD	6
38' HERRESHOFF SAILS AND RIGGING	6
38' HERRESHOFF SALON AND GALLEY	6
38' HERRESHOFF ENGINE AND MECHANICAL	7
38' HERRESHOFF MISC EQUIPMENT	7
DISCLAIMER	7
Exclusions	7
Disclaimer	7
PHOTOS	8
1 Native 1970 38' Herreshoff	8
2	8
3	8
4	8
5	9
6	9

7	9
8	9
9	10
10	10
11.1	10
11	10
12	11
13	11
14	11
15	11
16	12
17	12
18	12
CONTACTS	13
Contact details	13
Telephones	13
Office hours	13
Address	13

SPECIFICATIONS

Overview

This Herreshoff classic design clipper ketch was the last vessel that L. Francis Herreshoff personally supervised the construction of. "Native" is a famous Ticonderoga ketch design. This boat was sailed mostly in New England and often went South to the Bahamas. Brought to the Chesapeake in 1998, she continues to sail the bay out of Deltaville VA. Don't miss out on the classic! She has had exterior restoration and is ready for her new owner!

Basic Information

Category: Other

Model Year: 1970

Year Built: 1970

Country: United States

Dimensions

LOA: 38' 0" (11.58m)

Beam: 11' 0" (3.35m)

Max Draft: 5' 2" (1.57m)

Speed, Capacities and Weight

Cruise Speed: 5 Kts. (6 MPH)

Max Speed: 7 Kts. (8 MPH)

Water Capacity: 80 Gallons

Fuel Capacity: 40 Gallons

Accommodations

Total Cabins: 1

Total Berths: 4

Total Heads: 1

Hull and Deck Information

Hull Material: Wood

Engine Information

Engines: 1

Manufacturer: Yanmar

Engine Type: Inboard

Fuel Type: Diesel

DETAILED INFORMATION

MAIN DESCRIPTION

This Herreshoff classic design clipper ketch was the last vessel that L. Francis Herreshoff personally supervised the construction of. "Native" is a famous Ticonderoga ketch design. This boat was sailed mostly in New England and often went South to the Bahamas. Brought to the Chesapeake in 1998, she continues to sail the bay out of Deltaville VA. Don't miss out on the classic! She has had exterior restoration and is ready for her new owner!

38' HERRESHOFF DECK AND HULL

Solid wood construction:Hull planking- Honduras MahoganyGuardboard Plank and next up - Heart PineDeck - T&G PineCabin Top - T&G FirRudder - White OakTiller made of LocustBooms are made of FirBow Sprit is SpruceVarnished teak rails and hatchesGround Tackle:1 30lb Danforth1 28lb Fortress1 35lb Plow1 15lb Lunch hook2- 300ft Rhode1 - 280ft chain

38' HERRESHOFF COCKPIT AND NAVIGATION

Seating for 4Cockpit cushionsLocust wood TillerCompass mounted in original bronze binnacleGarmin GPS and radarGarmin depth sounderData marine speed indicator

38' HERRESHOFF ACCOMMODATIONS AND HEAD

Forward V berth with 2 single berthsPort side HeadStarboard side sink and vanityPort side berth in SalonStarboard side berth in Salon

38' HERRESHOFF SAILS AND RIGGING

MainsailMizzen sailforestay sailJib sailStorm JibTop sailMizzen staysailAll sails are in good conditionAll running rigging replaced (during last 7 years)Rebuilt blocks (Meriman Brothers with bronze sheaves and ash cheeks)Spar blocksStanding rigging (stainless steel with spliced thimbles and bronze turnbuckles)All hardware is bronze original Herreshoff designNew sail covers and sail bags (2012)Bronze winches

38' HERRESHOFF SALON AND GALLEY

Large dropleaf teak table2 gas portable stoveSome storage cabinets

38' HERRESHOFF ENGINE AND MECHANICAL

Yanmar diesel 3 cylinder with 400 hours 12 volt system 3 batteries with Perko Battery Selector

38' HERRESHOFF MISC EQUIPMENT

Bell, hand held horn, flares 8 Life jackets New dock lines 6 Fenders Winter canvas boat cover Spare tiller Ventilation is 12 opening ports, butterfly skylight hatch, fore cabin roof hatch, and main companionway

DISCLAIMER

The Company offers the details of this vessel in good faith but cannot guarantee or warrant the accuracy of this information nor warrant the condition of the vessel. A buyer should instruct his agents, or his surveyors, to investigate such details as the buyer desires validated. This vessel is offered subject to prior sale, price change, or withdrawal without notice.

Exclusions

Owner's personal belongings.

Disclaimer

The Company offers the details of this vessel or yacht in good faith but cannot guarantee or warrant the accuracy of this information nor warrant the condition of the vessel. A buyer should instruct his representatives, agents, or his surveyors, to investigate such details as the buyer desires validated. This vessel or yacht is offered subject to prior sale, price change, or withdrawal without notice.

PHOTOS

1 Native 1970 38' Herreshoff



2



3



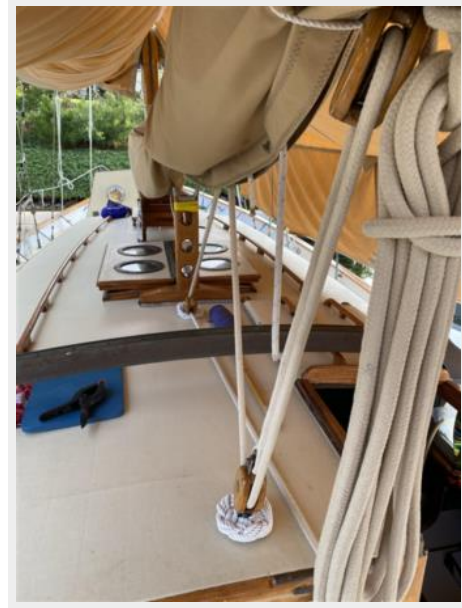
4



5



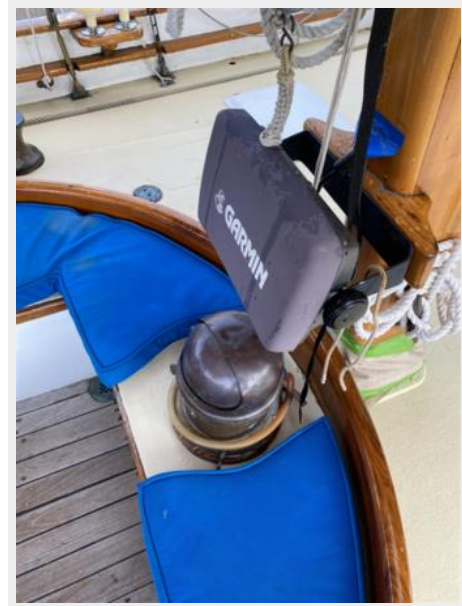
6



7



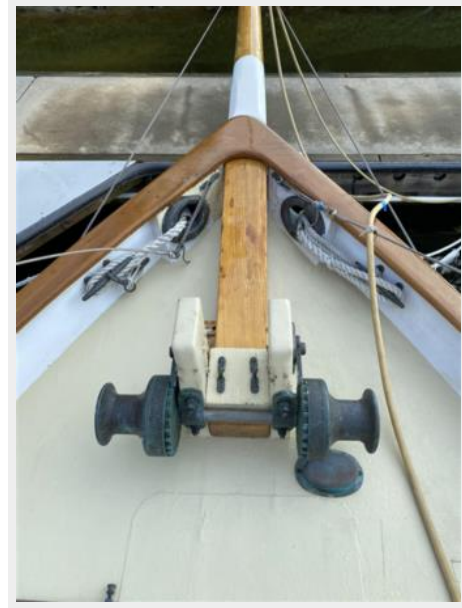
8



9



10



11.1



11



12



13



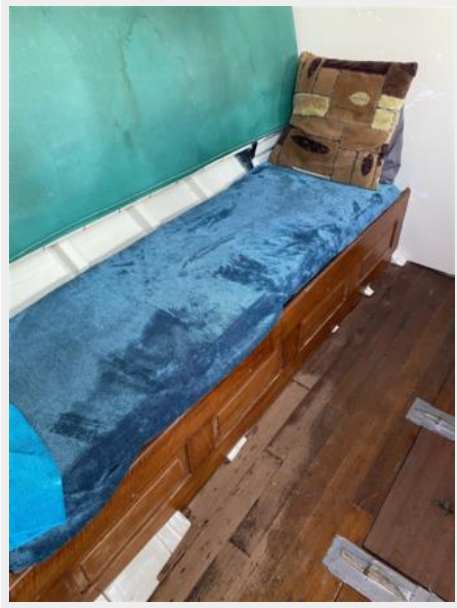
14



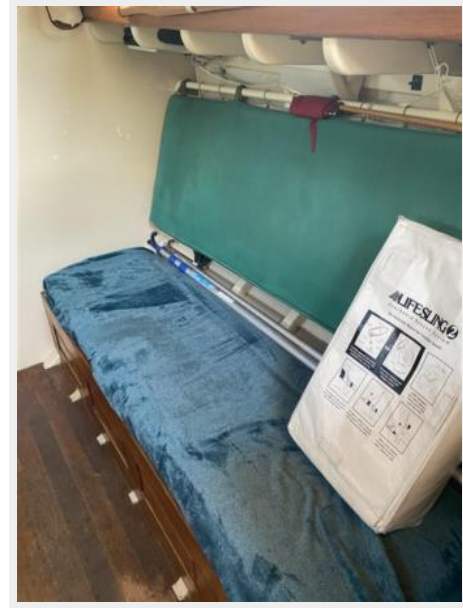
15



16



17



18



CONTACTS

Andrey Shestakov, leading yacht broker of the sales department of Shestakov Yacht Sales Inc. Shestakov Yacht Sales Inc., the official representative of the Miami/Fort Lauderdale FL headquarters.

Contact details

Email: andrey@shestakovyachtsales.com

Web: shestakovyachtsales.com/en/

Telephones

USA: +1(954)274-4435

Office hours

Monday – Saturday: **9:00 - 21:00** EDT

Sunday: **closed**

Address



Harbour Towne Marina, 850 NE 3rd St,
STE 213, Dania, FL 33004