

2 MARYS — LAGOON



Builder: LAGOON

Year Built: 2015

Model: Catamaran

Price: PRICE ON APPLICATION

Location: United States

LOA: 45' 0" (13.72m)

Beam: 25' 9" (7.85m)

Max Draft: 4' 3" (1.30m)

Our experienced yacht broker, Andrey Shestakov, will help you choose and buy a yacht that best suits your needs 2 MARYS — LAGOON from our catalogue. Presently, at Shestakov Yacht Sales Inc., we have a wide variety of yachts available on our sale's list. We also work in close contact with all the big yacht manufacturers from all over the world.

If you would like to buy a yacht 2 MARYS — LAGOON or would like help answering any questions concerning purchasing, selling or chartering a yacht, please call +1(954)274-4435

TABLE OF CONTENTS

| | |
|-----------------------------------|----|
| TABLE OF CONTENTS | 2 |
| SPECIFICATIONS | 5 |
| Overview | 5 |
| Basic Information | 5 |
| Dimensions | 5 |
| Speed, Capacities and Weight | 6 |
| Accommodations | 6 |
| Hull and Deck Information | 6 |
| Engine Information | 6 |
| DETAILED INFORMATION | 7 |
| Construction | 7 |
| Deck | 7 |
| Hardware | 7 |
| Cockpit | 8 |
| Salon | 8 |
| Aft Cabins | 8 |
| Forward Cabin | 9 |
| Galley | 9 |
| Engines | 9 |
| Electronics | 10 |
| Electrical | 10 |
| Flybridge | 10 |
| Sails | 11 |
| Standing Rigging | 11 |
| Running Rigging | 11 |
| Notable Options and Customization | 11 |
| Exclusions | 12 |
| Disclaimer | 12 |

| | |
|--------|----|
| PHOTOS | 13 |
| 2 | 13 |
| 3 | 13 |
| 4 | 13 |
| 5 | 13 |
| 6 | 13 |
| 7 | 13 |
| 8 | 14 |
| 9 | 14 |
| 10 | 14 |
| 11 | 14 |
| 12 | 14 |
| 13 | 14 |
| 14 | 15 |
| 15 | 15 |
| 17 | 15 |
| 16 | 15 |
| 18 | 15 |
| 19 | 15 |
| 20 | 16 |
| 21 | 16 |
| 22 | 16 |
| 23 | 16 |
| 24 | 16 |
| 25 | 16 |
| 27 | 17 |
| 26 | 17 |
| 28 | 17 |
| 29 | 17 |

| | |
|-----------------|----|
| 30 | 17 |
| 31 | 17 |
| 32 | 18 |
| 33 | 18 |
| 34 | 18 |
| 35 | 18 |
| 36 | 18 |
| 37 | 18 |
| 38 | 19 |
| 39 | 19 |
| 40 | 19 |
| 41 | 19 |
| 43 | 19 |
| 42 | 19 |
| 45 | 20 |
| 44 | 20 |
| 46 | 20 |
| 47 | 20 |
| 48 | 21 |
| 49 | 21 |
| 50 | 21 |
| 51 | 21 |
| 52 | 21 |
| CONTACTS | 22 |
| Contact details | 22 |
| Telephones | 22 |
| Office hours | 22 |
| Address | 22 |

SPECIFICATIONS

Overview

This is without a doubt the most thoughtfully laid out and equipped Lagoon 450 currently on the market. This was her original owner's second Lagoon 450. They took everything they loved from their first boat, and things they wished they had done on their first boat.

Her current owners have owned her for 3 years, and made some further improvements to the boat and maintained her with an open check book.

Some of her key features include:

- Onan Generator
- Upgraded Yanmar Diesel Motors
- Solar Panels
- Tropical Air
- All Electric Winches
- Upgraded B&G Electronics Package
- ICW Friendly Mast
- Custom Hardtop w/ Full Enclosure
- Dual Racor Filters
- Folding Props
- And much more.

Basic Information

Category: Catamaran

Model Year: 2015

Year Built: 2015

Country: United States

Dimensions

LOA: 45' 0" (13.72m)

Beam: 25' 9" (7.85m)

Max Draft: 4' 3" (1.30m)

Speed, Capacities and Weight

Displacement: 53582000 Pounds

Gross Tonnage: 37265 Pounds

Water Capacity: 138 Gallons

Fuel Capacity: 132 Gallons

Accommodations

Total Cabins: 3

Total Heads: 3

Hull and Deck Information

Hull Material: Fiberglass

Engine Information

Engines: 2

Manufacturer: Yanmar

Model: 4JH

Engine Type: Inboard

Fuel Type: Diesel

DETAILED INFORMATION

Construction

- Polyester and high quality anti osmotic resin
- Hull and deck laminated by infusion
- Balsa core hull, solid laminate under water line, white gel coat
- Balsa core bridge deck and deck
- Solid laminate inner liners and deck
- Laminated marine plywood bulkheads

Deck

- Storage locker on aft cockpit portside
- Big storage locker
- Access to the windlass and chain locker by a vertical pannel
- Deck light on mast
- Locker on starboard side (genset as an option)
- Sun pad
- Settee

Hardware

- 8 mooring cleats
- Harken 60 electric winch on starboard side of helm for mainsail halyard and reefing lines and genoa
- Harken 50 electric winch, on port side for genoa halyard, spi (option), topping lift
- Harken 60 electric winch, for genoa on port side
- Harken 50 electric, for main sheet, traveller and furler
- Vertical axe windlass 12V 1700W in anchor locker, with 12 mm gypsy
- Trampoline with knot-less nylon netting
- Extern stern pulpits
- Inboard stern pulpits including on portside flagpole fittings, buoy support, and custom welded bbq mount
- Composite forward longitudinal beam with recessed chain run and mooring cleat
- Aluminium crossbeam with furler genoa chain plate, anchor roller and navigation lights
- Mainsheet traveller track and ball-bearing car
- 2 genoa tracks with genoa car and stopper
- Mantus 85 pound anchor
- Mason 65 pound anchor

Cockpit

- Large cockpit usable as deck salon, protected by fixed composite bimini with recessed cockpit lighting
- U-shape foredeck seating area with technical generator locker on the front
- 2 storage lockers in stern crossbeam
- Custom installed Isotherm cockpit refrigerator
- Custom installed Isotherm cockpit ice maker
- Synthetic resin countertop
- Sliding window between cockpit and galley
- Direct access from cockpit to helm station on starboard side
- Lazy boy on starboard side with storage locker
- Bin with upper access and front door
- Storage locker with top access (70 liters / 18 gallon US) with drainage
- Aeration hatch - Opening roof on the fly for cockpit aeration
- Storage for 2 gas tanks on starboard side of the cockpit
- Built-in storage area for cockpit table in bimini ceiling
- Polyester non streaming toe rail on the cockpit sides
- Custom cockpit cushions
- Custom cockpit shades and screens

Salon

- Large main salon with panoramic view - standing headroom approx: 2,05 m / 6'9"
- Steel pillar with fabric cover
- Varnished coffee table that can be swapped with the large cockpit table
- Seating for 5 / 6 people
- Storage compartments under bench seats
- Locking aluminium sliding cockpit door with open/closed positions
- 2 opening hatches on forward windows
- Curtains on forward salon windows
- Custom upholstered salon cushions

Aft Cabins

- Queen-size berth
- Semi-island berth
- 1 drawer under berths.
- 1 hanging lockers
- 1 low shelf
- Shoes storage in the floor
- Ceiling led spotlight

- 2 reading lights per berth
- 2 bed tables with storage
- 1 opening deck hatch
- 1 opening port hole
- 1 large hull window in plexiglass
- 1 opening escape hatch
- Curtains on portholes, hatches and fixed one-way windows

Forward Cabin

- Transformable double berth or 2 simple berths
- 2 drawers under berths
- 2 space storages
- 1 bookshelf
- 1 bed table with storage and shoes storage
- Hanging lockers and shelves
- LED ceiling lights
- 2 reading lights per berth
- 1 opening deck hatch
- 1 opening port hole
- 1 large hull window
- Curtains on portholes, hatches and fixed one-way windows
- 1 mirror
- 3 lockers storage under the berth

Galley

- Galley in main salon to starboard with direct access to cockpit through sliding window
- White synthetic resin countertop
- Double stainless steel sink with chrome-plated mixer tap hot and cold water
- Integrated dish drainage area.
- Cutlery drawer
- Storage under sink
- 3 burner stove / oven with grill stainless steel
- 12V fridge
- 12V freezer

Engines

- Engine hatch gas struts
- 2 x 54 HP Yanmar 4JH

- 2 X Yanmar SD60 saildrives
- Engine controls at helm station
- Soundproofed engine compartments, soundproof access panels
- Electrical extractor for ventilation
- Sea water filters
- Lights
- Folding props
- Dual Racor fuel filter setup

Electronics

- B&G 12 inch Zeus Series Chart Plotter at Helm
- B&G 12 inch Zeus Series Chart Plotter at Helm
- B&G 4G Radar
- B&G Smart Pilot
- B&G Wireless Autopilot Remote
- B&G Wifi Module
- B&G AIS
- B&G VHF 50
- Fusion Stereo System

Electrical

- Main 12V electrical panel starboard side of salon next to companionway with wood protection
- LED lights
- Ammeter, voltmeter, circuit breakers, back lighting, water gauge, 12V outlet, fuel gauge
- 2 engine start batteries: 12 v- 110 Amp
- AGM house batteries
- Inverter/Charger
- New Onan 11.5 KVA generator

Flybridge

- Twin deck access stairways from deck
- Large bench seat for 6 people
- Ergonomically-designed helm station with leathered wheel with brake, engine throttles, engine panels, hourmeters, compass, large instrument console for electronic displays, cup holders, rope storage
- Protection cover for helm position
- Space storage around lateral staircases of the flybridge

- Sun pad place in front of the helm station
- Custom hardtop over the flybridge
- Custom full enclosure for the flybridge

Sails

- 1 dacron full roach full batten mainsail
- 1 furling genoa with UV protection
- Sunbrella stack pack for mainsail

Standing Rigging

- Aluminium ICW friendly mast with mainsail track and ball-bearing
- Double pushing spreader rig
- 1 aluminium boom
- 2 shrouds with chafe guards
- 2 lower shrouds
- 1 forestay with furler for genoa
- 2 mainsail lazy-jacks for battened main sail

Running Rigging

- 1 double-purchase spectra mainsail halyard
- 1 spectra genoa halyard
- 1 mainsail sheet pre-stretched
- 2 genoa sheets pre-stretched
- 3 mainsail reefing lines pre-stretched
- 1 genoa furling line pre-stretched
- 2 mainsail traveller car control lines pre-stretched

Notable Options and Customization

- 85 pound Mantus Anchor
- Teak decking in cockpit
- Custom flybridge hardtop
- All electric winches
- ICW friendly mast height
- Folding bronze propellers
- Upgraded Yanmar diesels
- Spectre Watermaker

- Onan 11 kw generator
- Mastervolt Inverter
- Kiase Inverter
- Solar
- Custom installed Isotherm refrigerator in cockpit
- Custom installed Isotherm ice maker in cockpit
- Full tropical Air Conditioning
- Quick Windlass Chain counter
- Upgraded B&G Electronics Package
- Highfield CM350 w/ Yamaha F40 40hp outboard
- Custom rear cockpit sun/rain shade
- Full enclosure for helm
- Custom leather upholstery throughout

Exclusions

Owner's personal belongings.

Disclaimer

The Company offers the details of this vessel or yacht in good faith but cannot guarantee or warrant the accuracy of this information nor warrant the condition of the vessel. A buyer should instruct his representatives, agents, or his surveyors, to investigate such details as the buyer desires validated. This vessel or yacht is offered subject to prior sale, price change, or withdrawal without notice.

PHOTOS

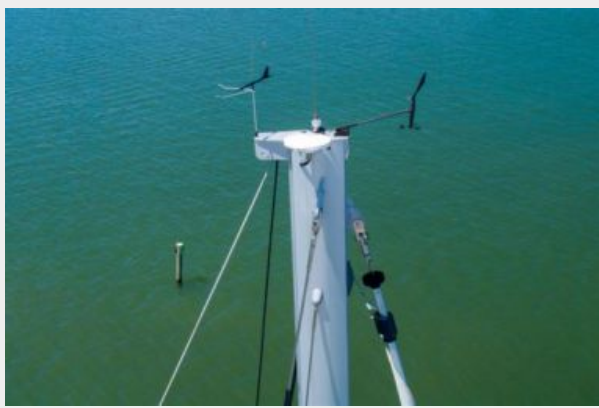
2



3



4



5



6



7



8



9



10



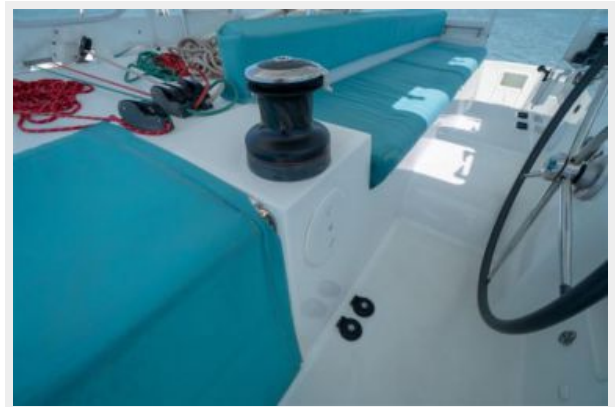
11



12



13



14



15



16



17



18



19



20



21



22



23



24



25



26



27



28



29



30



31



32



33



34



35



36



37



38



39



40



41



42



43



44



45



46



47



48



49



50



51



52



CONTACTS

Andrey Shestakov, leading yacht broker of the sales department of Shestakov Yacht Sales Inc. Shestakov Yacht Sales Inc., the official representative of the Miami/Fort Lauderdale FL headquarters.

Contact details

Email: andrey@shestakovyachtsales.com

Web: shestakovyachtsales.com/en/

Telephones

USA: +1(954)274-4435

Office hours

Monday – Saturday: **9:00 - 21:00** EDT

Sunday: **closed**

Address



Harbour Towne Marina, 850 NE 3rd St,
STE 213, Dania, FL 33004