

NAVY BLEW — ERICSON YACHTS



Builder: ERICSON YACHTS

Year Built: 1985

Model: Sloop

Price: PRICE ON APPLICATION

Location: United States

LOA: 38' 0" (11.58m)

Beam: 12' 0" (3.66m)

Max Draft: 5' 0" (1.52m)

Cruise Speed: 7 Kts. (8 MPH)

Max Speed: 9 Kts. (10 MPH)

Our experienced yacht broker, Andrey Shestakov, will help you choose and buy a yacht that best suits your needs **Navy Blew — ERICSON YACHTS** from our catalogue. Presently, at Shestakov Yacht Sales Inc., we have a wide variety of yachts available on our sale's list. We also work in close contact with all the big yacht manufacturers from all over the world.

If you would like to buy a yacht **Navy Blew — ERICSON YACHTS** or would like help answering any questions concerning purchasing, selling or chartering a yacht, please call **+1(954)274-4435**

TABLE OF CONTENTS

TABLE OF CONTENTS	2
SPECIFICATIONS	4
Overview	4
Basic Information	4
Dimensions	4
Speed, Capacities and Weight	4
Accommodations	4
Hull and Deck Information	5
Engine Information	5
DETAILED INFORMATION	6
MAIN DESCRIPTION	6
38' ERICSON HULL AND DECK	6
38' ERICSON COCKPIT AND HELM	6
38' ERICSON SAILS AND EQUIPMENT	6
38' ERICSON ELECTRONICS	6
38' ERICSON ENGINE AND MECHANICAL	6
38' ERICSON ELECTRICAL	6
38' ERICSON GALLEY AND SALON	7
38 ERICSON ACCOMMODATIONS AND HEAD	7
38' ERICSON EXCLUSIONS	7
DISCLAIMER	7
Exclusions	7
Disclaimer	7
PHOTOS	8
1 Navy Blew 1985 38' Ericson	8
2	8
3	8
4	8

5	9
6	9
7	9
8	9
9	10
10	10
11	10
12	10
13	11
14	11
15	11
16	11
17	12
18	12
19	12
CONTACTS	13
Contact details	13
Telephones	13
Office hours	13
Address	13

SPECIFICATIONS

Overview

"Navy Blew" is a well kept 1985 Ericson 38' that shouldn't be overlooked. This popular conservative design makes for a quality classic boat. She is loaded with comfort and storage, easy to sail and handles great in all conditions. The decks are well laid out and with well secured deck hardware. Spacious interior with many unique features. Don't miss out on this wonderful sail boat for your next adventure!

Basic Information

Category: Sloop

Model Year: 1985

Year Built: 1985

Country: United States

Dimensions

LOA: 38' 0" (11.58m)

Beam: 12' 0" (3.66m)

Max Draft: 5' 0" (1.52m)

Speed, Capacities and Weight

Cruise Speed: 7 Kts. (8 MPH)

Max Speed: 9 Kts. (10 MPH)

Displacement: 14900 Pounds

Water Capacity: 80 Gallons

Holding Tank: 15 Gallons

Fuel Capacity: 60 Gallons

Accommodations

Total Cabins: 1

Total Berths: 4

Total Heads: 1

Hull and Deck Information

Hull Material: Fiberglass

Engine Information

Engines: 1

Manufacturer: Universal

Model: M40

Engine Type: Inboard

Fuel Type: Diesel

DETAILED INFORMATION

MAIN DESCRIPTION

"Navy Blew" is a well kept 1985 Ericson 38' that shouldn't be overlooked. This popular conservative design makes for a quality classic boat. She is loaded with comfort and storage, easy to sail and handles great in all conditions. The decks are well laid out and with well secured deck hardware. Spacious interior with many unique features. Don't miss out on this wonderful sail boat for your next adventure!

38' ERICSON HULL AND DECK

Fiberglass hull with Fin keel and Spade Rudder
Molded fiberglass toe rail
Fenders
Anchor locker forward
Swim ladder aft
Lifelines

38' ERICSON COCKPIT AND HELM

T-shaped cockpit with seating for 6
Cockpit cushions
Helm wheel with binnacle
Locker storage
Propane Grill
Bimini and dodger

38' ERICSON SAILS AND EQUIPMENT

Full Batten Mainsail
155 Genoa sail
Storm Sail
Lazy Jacks
Whisker Pole
One power Lewmar Winch
Variat winches
Standing Rigging, Running rigging, backstay
Sail covers and winch covers

38' ERICSON ELECTRONICS

Autohelm ST400
Garman GPS, Navman
VHF
Standard depth, wind, speed

38' ERICSON ENGINE AND MECHANICAL

Universal M40 32hp diesel engine, rebuilt in 2010
Hours unknown
One Bilge with auto float switch and manual in cockpit
Sump Pump in shower

38' ERICSON ELECTRICAL

Main electrical panel at Navigation Station
2 house batteries
1 starter battery
Inverter

38' ERICSON GALLEY AND SALON

Starboard aft galley 3 burner propane stove with oven Built in Bar Double sinks Fresh and salt water foot pumps 2 ice boxes Microwave and coffee maker Salon dining table - seats 6 - sleeps 2 Starboard salon settee Navigation station/table Wood burning Fireplace Plenty of storage and shelves

38 ERICSON ACCOMMODATIONS AND HEAD

Forward V berth -sleeps 2 Port side dinnette - sleeps 2 Starboard side settee -sleeps 1 Aft quarter berth -sleeps 1-2 Head located Port side center with Manual Raritan head Separate stand-up shower vanity and sink

38' ERICSON EXCLUSIONS

Tender does not convey All personal items belonging to seller do not convey

DISCLAIMER

The Company offers the details of this vessel in good faith but cannot guarantee or warrant the accuracy of this information nor warrant the condition of the vessel. A buyer should instruct his agents, or his surveyors, to investigate such details as the buyer desires validated. This vessel is offered subject to prior sale, price change, or withdrawal without notice.

Exclusions

Owner's personal belongings.

Disclaimer

The Company offers the details of this vessel or yacht in good faith but cannot guarantee or warrant the accuracy of this information nor warrant the condition of the vessel. A buyer should instruct his representatives, agents, or his surveyors, to investigate such details as the buyer desires validated. This vessel or yacht is offered subject to prior sale, price change, or withdrawal without notice.

PHOTOS

1 Navy Blew 1985 38' Ericson



2



3



4



5



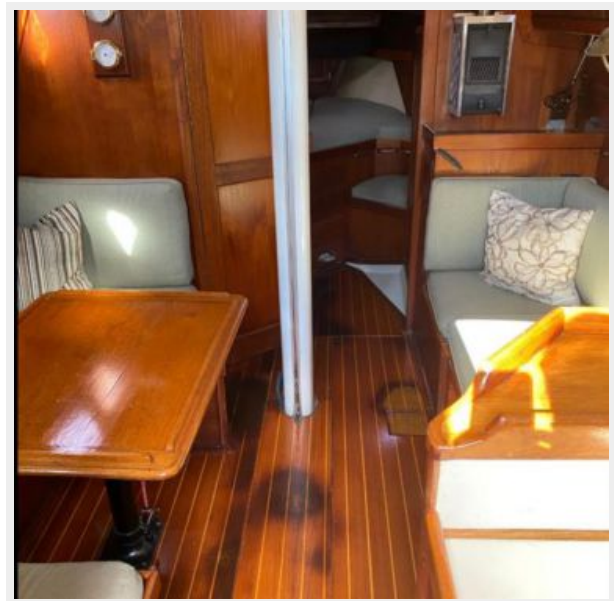
6



7



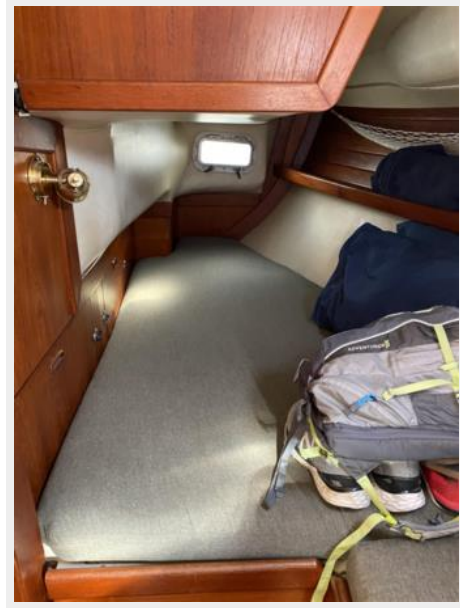
8



9



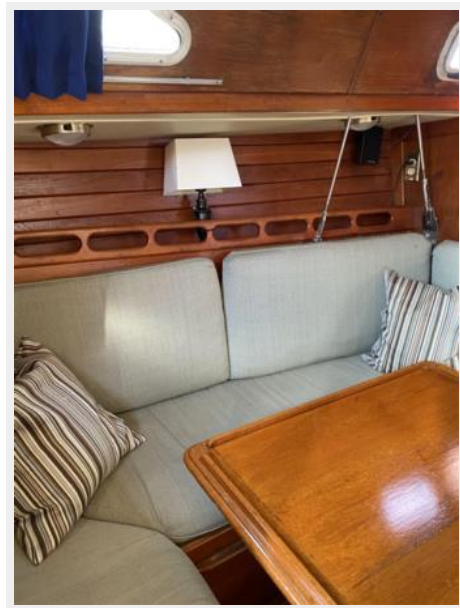
10



11



12



13



14



15



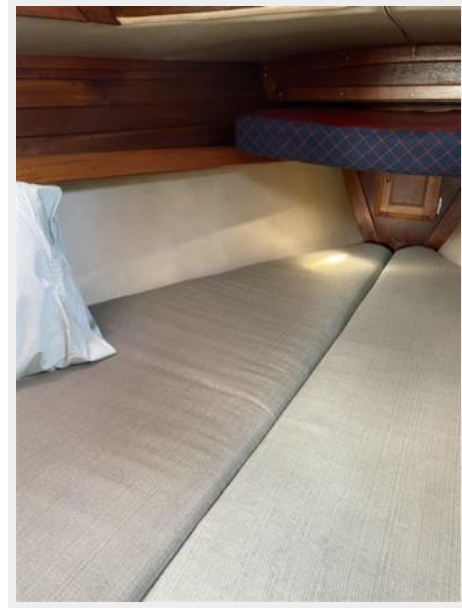
16



17



18



19



CONTACTS

Andrey Shestakov, leading yacht broker of the sales department of Shestakov Yacht Sales Inc. Shestakov Yacht Sales Inc., the official representative of the Miami/Fort Lauderdale FL headquarters.

Contact details

Email: andrey@shestakovyachtsales.com

Web: shestakovyachtsales.com/en/

Telephones

USA: +1(954)274-4435

Office hours

Monday – Saturday: **9:00 - 21:00** EDT

Sunday: **closed**

Address



Harbour Towne Marina, 850 NE 3rd St,
STE 213, Dania, FL 33004