

NO REGRETS — GRAND BANKS



Builder: GRAND BANKS

Year Built: 1988

Model: Trawler Yacht

Price: PRICE ON APPLICATION

Location: United States

LOA: 46' 0" (14.02m)

Beam: 14' 7" (4.44m)

Max Draft: 4' 6" (1.37m)

Cruise Speed: 12 Kts. (14 MPH)

Max Speed: 16 Kts. (18 MPH)

Our experienced yacht broker, Andrey Shestakov, will help you choose and buy a yacht that best suits your needs **No Regrets — GRAND BANKS** from our catalogue. Presently, at Shestakov Yacht Sales Inc., we have a wide variety of yachts available on our sale's list. We also work in close contact with all the big yacht manufacturers from all over the world.

If you would like to buy a yacht **No Regrets — GRAND BANKS** or would like help answering any questions concerning purchasing, selling or chartering a yacht, please call **+1(954)274-4435**

TABLE OF CONTENTS

TABLE OF CONTENTS	2
SPECIFICATIONS	5
Overview	5
Basic Information	5
Dimensions	5
Speed, Capacities and Weight	5
Accommodations	6
Hull and Deck Information	6
Engine Information	6
DETAILED INFORMATION	7
MAIN DESCRIPTION	7
WALKTHROUGH	7
APPOINTMENTS	7
Galley	7
Electronics	8
ELECTRICAL	8
Mechanical	8
DECK AND HULL	8
DISCLAIMER	8
CO-BROKERAGE COMMISSION SPLIT POLICY	9
Exclusions	9
Disclaimer	9
PHOTOS	10
1	10
2	10
3	10
4	10
5	10

6	10
7	11
8	11
9	11
10	11
11	11
12	11
13	12
14	12
15	12
16	12
17	12
18	12
19	13
20	13
21	13
22	13
23	13
24	13
25	14
26	14
27	14
28	14
29	14
30	14
31	15
32	15
33	15
34	15

35	15
36	15
37	16
38	16
39	16
40	16
41	16
42	16
43	17
44	17
45	17
46	17
47	17
48	17
49	18
50	18
51	18
CONTACTS	19
Contact details	19
Telephones	19
Office hours	19
Address	19

SPECIFICATIONS

Overview

Exceptional Condition! This beautifully maintained Grand Banks has the highly desirable extra wide aft cabin and fiberglass non-skid decks and walkways. No teak decks to maintain! The aft cabin is noticeably wider than typical Grand Banks, providing for more living space and storage. The owner has meticulously cared for this vessel over the years and kept her in fantastic condition. Cabins fore and aft with a working galley and large salon in between with warm, rich wood interior makes this boat a home away from home. Three new air conditioning units, 10 kW Westerbeke generator with approx. 100 hrs. "No Regrets" has Cat 3208 TA power and Twin Disc gears. This boat is truly a gem and available to see at anytime in the Chesapeake Bay area of Maryland.

Basic Information

Category: Trawler Yacht	Model Year: 1988
Year Built: 1988	Country: United States

Dimensions

LOA: 46' 0" (14.02m)	Beam: 14' 7" (4.44m)
Max Draft: 4' 6" (1.37m)	Clearance: 25' 4" (7.72m)

Speed, Capacities and Weight

Cruise Speed: 12 Kts. (14 MPH)	Max Speed: 16 Kts. (18 MPH)
Displacement: 39000 Pounds	Water Capacity: 278 Gallons
Holding Tank: 80 Gallons	Fuel Capacity: 600 Gallons

Accommodations

Total Cabins: 2

Total Berths: 3

Total Heads: 2

Hull and Deck Information

Hull Material: Fiberglass

Engine Information

Engines: 2

Manufacturer: Caterpillar

Model: 3208 TA

Engine Type: Inboard

Fuel Type: Diesel

DETAILED INFORMATION

MAIN DESCRIPTION

Exceptional Condition! This beautifully maintained Grand Banks has the highly desirable extra wide aft cabin and fiberglass non-skid decks and walkways. No teak decks to maintain! The aft cabin is noticeably wider than typical Grand Banks, providing for more living space and storage. The owner has meticulously cared for this vessel over the years and kept her in fantastic condition. Cabins fore and aft with a working galley and large salon in between with warm, rich wood interior makes this boat a home away from home. Three new air conditioning units, 10 kW Westerbeke generator with approx. 100 hrs. "No Regrets" has Cat 3208 TA power and Twin Disc gears. This boat is truly a gem and available to see at anytime in the Chesapeake Bay area of Maryland.

WALKTHROUGH

Entering "No Regrets" from the starboard side amidships, one finds a wide, open and clutter free salon area with the helm to ones immediate right (forward) and a roll top style desk with drawers on ones left and an "L" shaped leather couch further to stern next to the desk. A sturdy coffee table accompanies the couch. On the opposite side of the salon there are two occasional chairs, a magazine rack built in and an entertainment center. On the port side forward in the salon is a breakfast bar area with seating for two overlooking the lowered galley. Moving forward from the salon, there is a roomy galley to port and a head to starboard. Further forward one finds a large comfortable "V" berth with comfortable cushioning in excellent condition. Astern of the salon, down a short companionway, the interior opens to a generously wide aft cabin, noticeably wider than standard Grand Banks vessels. The aft cabin has a large queen size bed with plenty of room on each side. Another head is located on the port side as well as a desk area with storage astern of the head. Storage abound on all areas of this vessel and her rich wood interior is inviting. The aft cabin also has a companionway accessing the aft deck for ease in egress.

APPOINTMENTS

Warm, rich and inviting wood interior Custom drapes and blinds Custom leather upholstery Wet bar with ice maker Wood overhead hand rails Breakfast nook with seating for two Desk with flat screen TV Book shelves Magazine rack

Galley

Galley down design Port side, aft of the forward cabin Storage abound 9 drawers Princess 3 burner stove with oven and broiler Exhaust fan Microwave oven Filtered fresh water system Ice maker Washer and Dryer Fully equipped with dishes and utensils

Electronics

Furuno Navnet Net Chart Plotter 2002Furuno 1700 C (lower helm) 2002Furuno 1900 C (upper helm) 2002Furuno Radar 2002Furuno FAX-30 weather faxFuruno RD-30 Depth, speed temp 2002Masthead amplified TV antennaCable dockside connections fore and aftCat 5 computer network wiring with hubsNorthstar 952 X GPS chartplotter 2002SEA 222 SSB Radiolcom 502 VHF radio 1Icom Command mic lower stationFuruno RD-30 upper station 2002Simrad autopilot upper/lower 2002Intercom systemKenwood am/fm stereoSony DVD playerCybernet equalizerFlat screen TV

ELECTRICAL

Westerbeke Genset 10Kw 126 hoursTrace Inverter 2004Two 8 D 12volt batteriesOne 4D battery for genset 2017Shore power cordDC and AC electrical panels

Mechanical

Engine temp and low oil alarmsTwo bilge pumps - auto/maualHalon fire control systemFuel shut off valveManual lower helm steeringManual bridge steeringGlendinning synchronizerRaw water sea strainers with removable screensLube oil drain system (engine and genset)Teak grating in engine roomBennet trim tabsSS exhaust risersNew Cruise Air reverse cycle Air Conditioning (3 units)Forward Air unit recently replaced with Webasto unit Racor fuel filtersBoat Levelor trim tabsBilge BlowersEmergency Engine StopEngine drip pansFWC system with filtrationTwin Disc MG-507-1 transmissions w/ 2:54/1 ratio4 Blade props 30x27 pitchVacuFlush systems (both heads)

DECK AND HULL

Fiberglass Decks (No teak on decks)Bimini top with enclosureIzen glass with zipper insertsTextaline windshield coverCanvas window coversBeautiful teak hand rails and toe railVarnish covers on teak railsDark blue canvas on bridge, console, ext seatingBeautiful teak folding bridge table with custom coverFlybridge has upholstered seatingDinghy chocksDavit (Dinghy lift)Gorgeous teak transomSalt water washdownFresh water showerTeak swim platformTeak swim ladderElectric windlassRayline search lightFenders and docklines

DISCLAIMER

The Company offers the details of this vessel in good faith but cannot guarantee or warrant the accuracy of this information nor warrant the condition of the vessel. A buyer should instruct his agents, or his surveyors, to investigate such details as the buyer desires validated. This vessel is offered subject to prior sale, price change, or withdrawal without notice.

CO-BROKERAGE COMMISSION SPLIT POLICY

All our listings are available for co-brokerage on a 50-50 commission split agreement when the selling broker shows the listing and attends the survey. If the selling broker requires a courtesy showing and we are available to conduct a courtesy showing on our listing, the co-brokerage commission split is 60% listing commission and 40% selling commission. If the selling broker does not attend the survey, the co-brokerage commission split is 70% listing commission and 30% selling commission

Exclusions

Owner's personal belongings.

Disclaimer

The Company offers the details of this vessel or yacht in good faith but cannot guarantee or warrant the accuracy of this information nor warrant the condition of the vessel. A buyer should instruct his representatives, agents, or his surveyors, to investigate such details as the buyer desires validated. This vessel or yacht is offered subject to prior sale, price change, or withdrawal without notice.

PHOTOS

1



2



3



4



5



6



7



8



9



10



11



12



13



14



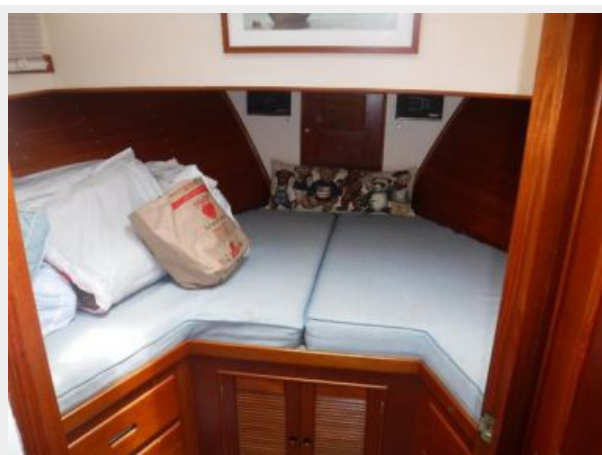
15



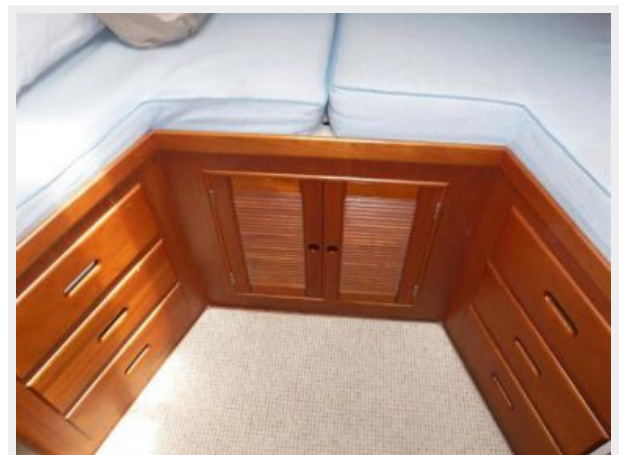
16



17



18



19



20



21



22



23



24



25



26



27



28



29



30



31



32



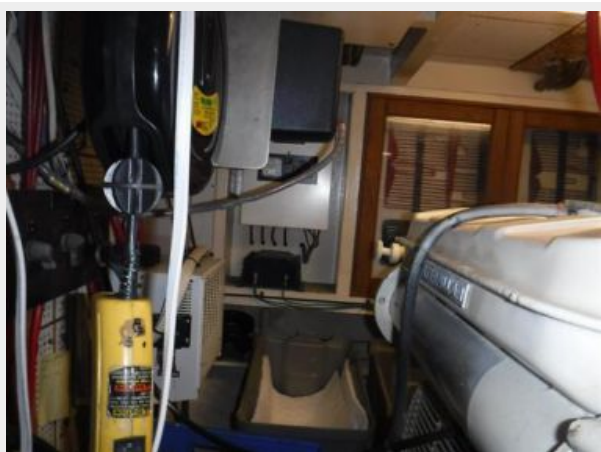
33



34



35



36



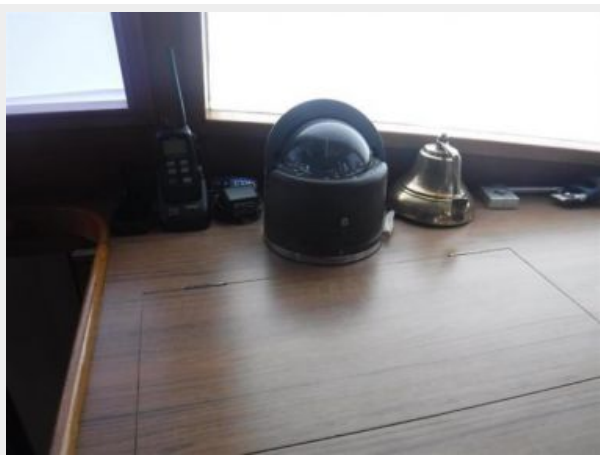
37



38



39



40



41



42



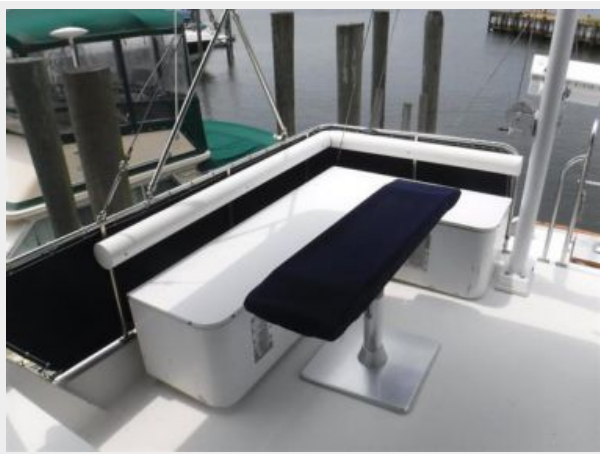
43



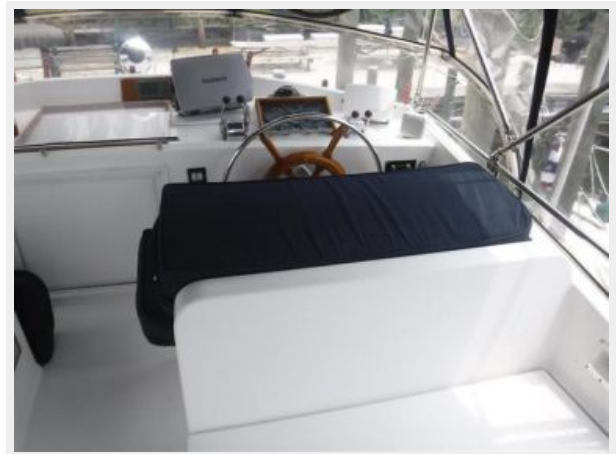
44



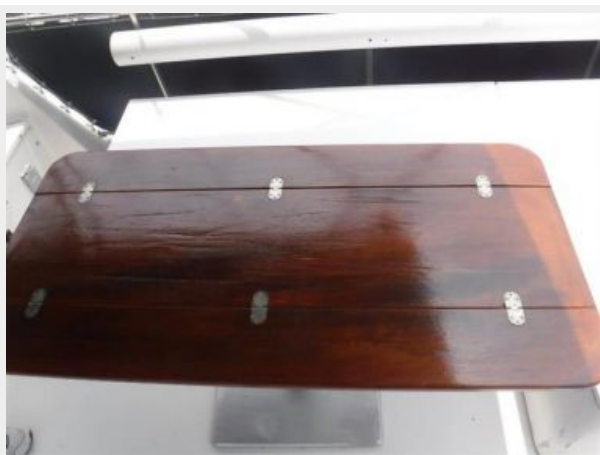
45



46



47



48



49



50



51



CONTACTS

Andrey Shestakov, leading yacht broker of the sales department of Shestakov Yacht Sales Inc. Shestakov Yacht Sales Inc., the official representative of the Miami/Fort Lauderdale FL headquarters.

Contact details

Email: **andrey@shestakovyachtsales.com**

Web: shestakovyachtsales.com/en/

Telephones

USA: **+1(954)274-4435**

Office hours

Monday – Saturday: **9:00 - 21:00 EDT**

Sunday: **closed**

Address



Harbour Towne Marina, 850 NE 3rd St,
STE 213, Dania, FL 33004