

PIPE DREAMER — VIKING



Builder: VIKING

Year Built: 2015

Model: Sport Fisherman

Price: PRICE ON APPLICATION

Location: United States

LOA: 70' 0" (21.34m)

Beam: 19' 7" (5.97m)

Max Draft: 5' 6" (1.68m)

Cruise Speed: 34 Kts. (39 MPH)

Max Speed: 41 Kts. (47 MPH)

Our experienced yacht broker, Andrey Shestakov, will help you choose and buy a yacht that best suits your needs **PIPE DREAMER — VIKING** from our catalogue. Presently, at Shestakov Yacht Sales Inc., we have a wide variety of yachts available on our sale's list. We also work in close contact with all the big yacht manufacturers from all over the world.

If you would like to buy a yacht **PIPE DREAMER — VIKING** or would like help answering any questions concerning purchasing, selling or chartering a yacht, please call **+1(954)274-4435**

TABLE OF CONTENTS

TABLE OF CONTENTS	2
SPECIFICATIONS	8
Overview	8
Basic Information	8
Dimensions	9
Speed, Capacities and Weight	9
Accommodations	9
Hull and Deck Information	9
Engine Information	9
DETAILED INFORMATION	10
Notable Highlights	10
Salon	10
Galley	10
Day Head	11
Companionway	11
Master Stateroom	11
Master Stateroom Head	11
Forward Stateroom	12
Forward Stateroom Head	12
Crew Stateroom Aft	12
Crew Stateroom Head- Aft	12
Guest Stateroom- Port Forward	13
Guest Stateroom Head- Port Forward	13
Decor	13
Cockpit/ Deck Exterior	13
Flybridge	14
Engine Room	14
Mechanical	15

Hull	15
Electronics	15
Palm Beach Towers	16
Exclusions	16
Disclaimer	17
PHOTOS	18
7469701_20200603133458324_1_XLARGE	18
7469701_20200603133510996_1_XLARGE	18
7469701_20200603133518253_1_XLARGE	18
7469701_20200603133523275_1_XLARGE	18
7469701_20200603133528413_1_XLARGE	18
7469701_20200603133534646_1_XLARGE	18
7469701_20200603133505366_1_XLARGE (1)	19
7469701_20200603133540251_1_XLARGE	19
7469701_20200603133558249_1_XLARGE	19
7469701_20200603133604459_1_XLARGE	19
7469701_20200603133612429_1_XLARGE	19
7469701_20200603133623330_1_XLARGE	19
7469701_20200603133505366_1_XLARGE	20
7469701_20200603133544887_1_XLARGE	20
7469720_20200603142502725_1_XLARGE	20
7469720_20200603142510689_1_XLARGE	20
7469720_20200603142517680_1_XLARGE	20
7469720_20200603142523638_1_XLARGE	20
7469720_20200603142532817_1_XLARGE	20
7469720_20200603142540823_1_XLARGE	20
7469720_20200603142549509_1_XLARGE	21
7469720_20200603142559831_1_XLARGE	21
7469720_20200603142625329_1_XLARGE	21

7469720_20200603142651189_1_XLARGE	21
7469720_20200603142715554_1_XLARGE	21
7469720_20200603142751648_1_XLARGE	21
7469720_20200603144805854_1_XLARGE	21
7469720_20200603144831567_1_XLARGE	21
7469720_20200603144847199_1_XLARGE	22
7469720_20200603144858627_1_XLARGE	22
7469720_20200603144933236_1_XLARGE	22
7469720_20200603144956512_1_XLARGE	22
7469720_20200603145032041_1_XLARGE	22
7469720_20200603145108255_1_XLARGE	22
7469720_20200603145125062_1_XLARGE	22
7469720_20200604104558897_1_XLARGE	22
7469720_20200604104631454_1_XLARGE	23
7469720_20200604104703456_1_XLARGE	23
7469720_20200604104734621_1_XLARGE	23
7469720_20200604104805589_1_XLARGE	23
7469720_20200604104837267_1_XLARGE	23
7469720_20200604104820292_1_XLARGE	23
7469720_20200604104922946_1_XLARGE	24
7469720_20200604104909283_1_XLARGE	24
7469720_20200604104956604_1_XLARGE	24
7469720_20200604111919272_1_XLARGE	24
7469720_20200604111951531_1_XLARGE	24
7469720_20200604112022335_1_XLARGE	24
7469720_20200604112054545_1_XLARGE	25
7469720_20200604112125632_1_XLARGE	25
7469720_20200604112217438_1_XLARGE	25
7469720_20200604112430562_1_XLARGE	25

7469720_20200604112446818_1_XLARGE	25
7469720_20200604130534095_1_XLARGE	25
7469720_20200604130602338_1_XLARGE	26
7469720_20200604130635338_1_XLARGE	26
7469720_20200604130703016_1_XLARGE	26
7469720_20200604130733422_1_XLARGE	26
7469720_20200604130805240_1_XLARGE	26
7469720_20200604130833600_1_XLARGE	26
7469720_20200604130907230_1_XLARGE	27
7469720_20200604130935658_1_XLARGE	27
7469720_20200604133119498_1_XLARGE	27
7469720_20200604133150203_1_XLARGE	27
7469720_20200604153523152_1_XLARGE	27
7469720_20200604133219713_1_XLARGE	27
7469720_20200604153557857_1_XLARGE	28
7469720_20200604153627826_1_XLARGE	28
7469720_20200604153642579_1_XLARGE	28
7469720_20200604153710860_1_XLARGE	28
7469720_20200604154554646_1_XLARGE	28
7469720_20200604154625297_1_XLARGE	28
7469720_20200604154655958_1_XLARGE	29
7469720_20200604154727028_1_XLARGE	29
7469720_20200604160834672_1_XLARGE	29
7469720_20200604160858972_1_XLARGE	29
7469720_20200604160926742_1_XLARGE	29
7469720_20200604160958786_1_XLARGE	29
7469720_20200604161027469_1_XLARGE	29
7469720_20200604161057525_1_XLARGE	29
7469720_20200604161126528_1_XLARGE	30

7469720_20200604161155502_1_XLARGE	30
7469720_20200604161206902_1_XLARGE	30
7469720_20200604161237066_1_XLARGE	30
7469720_20200604161303236_1_XLARGE	30
7469720_20200604161317352_1_XLARGE	30
7469720_20200604161330296_1_XLARGE	30
7469720_20200604161344470_1_XLARGE	30
7469720_20200604161412051_1_XLARGE	31
7469720_20200604161423008_1_XLARGE	31
7469720_20200604162033150_1_XLARGE	31
7469720_20200604162037920_1_XLARGE	31
7469720_20200604162043433_1_XLARGE	31
7469720_20200604162112604_1_XLARGE	31
7469720_20200604162414775_1_XLARGE	31
7469720_20200604162426712_1_XLARGE	31
7469720_20200604162454148_1_XLARGE	32
7469720_20200605123305820_1_XLARGE	32
7469720_20200605123338514_1_XLARGE	32
7469720_20200605123407254_1_XLARGE	32
7469720_20200605123440486_1_XLARGE	32
7469720_20200605123509753_1_XLARGE	32
7469720_20200605123539229_1_XLARGE	33
7469720_20200605123608682_1_XLARGE	33
7469720_20200605125030005_1_XLARGE	33
7469720_20200605125042530_1_XLARGE	33
7469720_20200605125108491_1_XLARGE	33
7469720_20200605125136022_1_XLARGE	33
7469720_20200605125203165_1_XLARGE	33
7469720_20200605125217393_1_XLARGE	33

7469720_20200605125230344_1_XLARGE	34
7469720_20200605125257169_1_XLARGE	34
CONTACTS	35
Contact details	35
Telephones	35
Office hours	35
Address	35

SPECIFICATIONS

Overview

I custom built the 2015 70' "PIPE DREAMER" for a 4 time repeat Viking owner. He is also a NJ resident and spent a lot of time with his captain inspecting his boat every weekend making sure she was built to his exact specifications and nothing was missed. He put his 20 plus years of boating experience into the build along with my personal input as well as one of the senior sales guys at Viking. This one is truly a very special built 70 Viking and has probably one of the prettiest interiors of all the boats I helped build. She is a real head turner and has been captain maintained and serviced at the Viking service center since new. A sleek aggressive look, with a sharp-edged feature line that runs from the front of the house to the cockpit and nearly 100 inches of forward free board. She was also one of the "High Performance" boats Viking built pulling almost 20k pounds of weight out by using Kevlar parts and deck house. She tops out over 41 knots and is truly a very special sport fish.

"PIPE DREAMER" is equipped with 2,600-hp MTU M94 diesels, with extended warranties through March 25th, 2021 or 3300 hours. Viking's tough build is as well known as its ability to run fast with the handling of a sports car allows better, sharper turning and responsiveness with superior tracking.

The 70' "PIPE DREAMER's" speed will come in handy on tournament day, which this boat was truly built for. From her 206-square-foot cockpit and Release Marine fighting chair to her in-deck live well, mezzanine bait stowage, freezer, and more, this 70' can chase the big ones - anywhere.

Palm Beach Tower; Costa flying-bridge enclosure; in-deck livewell; Release teak helm pod; mezzanine A/C; forward window mask; Side-Power bow thruster; custom hull color paint and ceramic coated in 2020; Sea Recovery watermaker; LCD TVs in guest staterooms; Premier edition upgraded decor package; 600-gal. auxiliary fuel tank; Release helm chairs and fighting chair; Eskimo ice chipper; 46' Outrigger Rupp Big Riggs HD, 4 Spreader, Bridge Release.

With the flying-bridge helm setup, the massive cockpit, and enough speed to get anywhere in a hurry, the 70' "PIPE DREAMER" is one of the most complete blue water fishing packages on the market.

Basic Information

Category: Sport Fisherman

Model Year: 2015

Year Built: 2015

Country: United States

Dimensions

LOA: 70' 0" (21.34m)

Beam: 19' 7" (5.97m)

Max Draft: 5' 6" (1.68m)

Speed, Capacities and Weight

Cruise Speed: 34 Kts. (39 MPH)

Max Speed: 41 Kts. (47 MPH)

Holding Tank: 365 Gallons

Fuel Capacity: 2343 Gallons

Accommodations

Total Cabins: 4

Total Heads: 5

Crew Cabin: 1

Crew Heads: 1

Hull and Deck Information

Hull Material: Fiberglass

Engine Information

Engines: 2

Manufacturer: MTU

Model: 16V 2000 M94

Engine Type: Inboard

Fuel Type: Diesel

DETAILED INFORMATION

Notable Highlights

- MTU Extended Protection until March 25, 2021 or 3,300 hours
- Top speed 42 knots
- Cruising speed 33 knots @ 165 GPH
- Carbon Fiber Performance Package
- Seekeeper M26
- GOST Watch HD Security System

Salon

- Carpet runner, partial, canvas
- Carpet runner, full, canvas
- Large AC vent in pantry
- Custom Amtico flooring at salon entrance way extended further than normal
- Teak crown molding around upper galley cabinets, day head and electrical panel
- SubZero clear ice maker- large cubes
- Cocktail table
- Salon door with electric door opener
- Dimmers for quartz lights
- Teak wire box
- Teak trim where Amtico floor meets carpet
- 46" Samsung TV on pop-up, Bose V35 entertainment system with Blu Ray
- Teak Valences and Lambrequins
- AC receptacle under dinette table
- Teak strips in salon headliner
- Dimmer for overhead LED lights
- Pull-out drawers in forward pantry area
- Custom bottle storage in between dinette and sofa
- Channel glass above dinette
- Custom wine glass storage

Galley

- Custom Amtico flooring
- Golden Beach counter-top
- Golden Beach granite peninsula top with white rope lighting underneath overhang
- Custom tile back-splash
- Conventional microwave with convection

- Pull out trash bin
- 110V outlet next to switch on bottom of upper cabinet above sink
- Stainless steel under-mount sink
- Four-burner surface mount range
- Satin nickel faucet
- Large exhaust fan over cook-top
- Custom cup holders, dividers and shelves in pantry
- (2) SubZero freezers and (4) SubZero refrigerators, drawer style

Day Head

- Towel bars and rings in brushed nickel to match faucets
- Hammered oil rubbed bronze sink with country rubbed faucet
- Custom Amtico flooring
- Golden Beach with chipped edge granite vanity top

Companionway

- Vertical teak strips between wall panels in companionway
- Costa canvas carpet runner with step covers
- Outboard storage compartments
- Linen closet
- Washer/Dryer

Master Stateroom

- Teak strips between headliner
- Custom sconce
- System 8 Mattress
- Additional 110v outlets on each side of bed
- 32" Samsung TV
- Additional telephone outlet
- Teak end table tops

Master Stateroom Head

- Mirrored ceiling
- Custom Amtico flooring
- Golden Beach Granite vanity top
- Teak face on lower vanity

- Mirror around upper vanity insert
- Satin Nickel Shower fixtures
- Brushed Nickel towel bars and rings

Forward Stateroom

- Island queen bunk with storage below
- Mattress Viking Slumber #8
- Samsung 26" TV

Forward Stateroom Head

- Mirror ceiling
- Custom Amtico flooring
- Brushed aluminum shower door
- Golden Beach vanity top polished
- Teak face on lower vanity
- Mirror around upper vanity insert
- Satin nickel shower fixtures
- Brushed nickel towel bars and rings

Crew Stateroom Aft

- 19" flat screen TV
- Hanging locker on aft bulkhead
- Dimmer on overhead LED lights
- Teak locker top
- Mattress Viking Slumber #6
- Engine room access

Crew Stateroom Head- Aft

- Mirror ceiling
- Custom Amtico flooring
- Chrome shower door
- Golden Beach vanity top
- Teak face on lower vanity
- Mirror around upper vanity insert
- Satin nickel shower fixtures

Guest Stateroom- Port Forward

- Speakers in soffit
- 19" Samsung TV
- Hinged upper bunk
- Teak locker storage top
- Mattress Viking Slumber #6
- Hanging locker raised to full height with drawers below

Guest Stateroom Head- Port Forward

- Golden Beach vanity top
- Chrome shower door
- Satin nickel shower fixtures
- Mirror ceiling

Decor

- Custom Decor
- Prestige Upgraded Decor
- Sofa, upgraded style, "dewberry" with storage arm
- Teak Valances and Lambrequins
- Custom wallpaper material
- Custom wallpaper installation
- Custom headliner material throughout boat
- Interior wood is random teak throughout
- Carpet throughout
- Appliqued bedspread and shams in master stateroom
- Custom bar stools with backs
- Salon door type catches on stateroom doors
- Brushed nickel hardware throughout
- Brushed nickel cover-plates for switches and receptacles throughout
- Satin nickel interior light trim throughout
- LED interior lights throughout

Cockpit/ Deck Exterior

- Salon forward window black mask
- Deck house made out of carbon fiber
- VC-Offshore bottom paint
- Lewmar V4 windlass

- Forward bilge and anchor locker painted with Awlgrip
- Magnetic switches for all bilge lights
- Freshwater wash down at bow inside anchor locker
- Side mounted top rails that follow top of salon window
- Anchor locker painted
- Polished stainless removable fairlead with anchor
- Sliding fender track under rub rail. Running from transom to edge of cabin
- Cruisair “Cool Breeze” mezzanine air system
- Top mounted grill in tackle center
- Additional fresh water outlets (1 on each side)
- 12v and 24v outlets for electric reels
- Fusion remote
- 15” KEP monitor
- Transom Livewell with window / light
- Green / White / Red lights
- Light in fighting chair - green

Flybridge

- Release teak helm pod
- Dedicated fresh water feed for tower with labeled shutoff valve in forward FB locker
- Switch in radio box for electronic drop-down overhead box in hardtop
- Split radio box lids
- Watermaker control panel
- Cushions are bolster style with ultra leather fabric - New 2019
- Single lever control handles with bow thruster buttons in handles
- Removable flybridge jump seat backrest
- Rod racks under both side bench seats
- Additional Octoplex control
- Hatch over bridge ladder
- Electronic trolling valves
- Electronic single lever controls for helm pod
- Recessed electronics boxes
- Large bridge freezer box forward of helm
- Refrigerated bridge drink box
- Dedicated batteries on flybridge for electronics
- Handrail on side of helm console above helm access door
- (3) Release Marine Trillion Series helm chairs with Ultra Leather

Engine Room

- 1400 GPD watermaker with auto back flush
- MTU 16V-2000 M94- 2600MHP - With warranty

- Headhunter head system
- Eskimo ice chipper that dumps into port fish box - New 2020
- Commercial pre-filters for watermaker
- Awlgrip brass thru hulls and sea strainers in engine room and fwd bilges
- Line run from oil change system to cockpit dockside box
- Headhunter freshwater pump
- 110V Outlet on aft bulkhead at entrance way
- Generator gas/water separator for both generators
- (2) toolboxes 4-drawer, 16" wide, painted white
- Back up freshwater pump
- Engine room cameras
- WillyVac in place of engine room clean out bilge pump
- Dual power steering pumps
- Spot Zero water maker
- New ISO transformers

Mechanical

- Twin Onan 27kw Generators - 6/1/2020 Port 2008 Hours Starboard 2002 Hours
- Second chiller logic control panel in forward pantry
- T in dockside water manifold to fill water tank from cockpit
- Deck fill for freshwater tank

Hull

- (6) molded in lumishore underwater lights
- DC bow thruster
- Custom hull color - Yellow painted ceramic coated 2020
- Bottom paint - VC Offshore
- New style air vents
- Fiberglass side thru hulls
- Performance package - Kevlar house and decks
- SeaKeeper M26,000 Gyro - Annual service done 2019 5836 hours

Electronics

- (3) KEP multifunctional displays
- Radar 1-Furuno Navnet 3D 25kw 96NM range
- Radar 2- Garmin GMR 404 HD
- Garmin GPS Map 8208
- Furuno Navnet 3D

- Furuno FCV 1200 sounder
- Garmin GSD-26 Chirp sounder
- Furuno RD33 data organizer and display
- Garmin GHP20 Viper autopilot
- (2) ICOM-M604 VHF
- Fusion MS-IP700i Stereo
- FLIR M625L thermo with low light
- KVH Tracvision HD7 satellite TV with Triamerica

Palm Beach Towers

- 9' Gap, (4) Antenna, Stands-offs, 3-Sided Track on perimeter rail
- (8) Hardtop lights multi-color with Fiberglass recess
- Radar Pod Large Oval Style - with larger Sliding Door for (4) teaser reels (2 US-8, 2 US-9)
- Molded Standing Platform with Coupler Box On Platform
- Molded 3 in 1 24V-LED Light Pod with stainless steel Bezel
- Molded 24V-LED Light Forward Platform stainless steel Bezel
- (2) Molded single maxilume LED spreader light facing outboard each side platform
- Control Box 65" Pod style for single lever controls with mounted compass
- Trim tab switch on control box
- Control box cover
- Top of control box painted satin black
- Tower sunshade frame painted matte black
- Painted underside hardtop Satin
- Painted underside platform & tower sunshade black
- (6) Rod Holders Polished Aft Legs, PBT Style
- Controls & Steering MTU Controls pod style single lever for 2600 HP
- (2) Stainless steel control handles with bow thruster push buttons Bow thruster control
- 46' Outrigger Rupp Big Riggs HD, 4 Spreader, Bridge Release Rupp Center Rigger
- Fresh water washdown
- Molded LED Nav. Lights - Port & Starboard
- Molded LED Stern Light Molded
- (4) Release Outrigger stainless steel Grommets mounted in cockpit gunnels
- (2) Custom multi-color LED Lights with fiberglass recess in sunshade
- (4) Custom multi-color LED Lights under platform with fiberglass recess
- Upgraded hardtop, platform & tower sunshade fiberglass fabricated using carbon fiber
- Rupp Rollers for Outriggers IPO eye bolts

Exclusions

Owner's personal belongings.

Disclaimer

The Company offers the details of this vessel or yacht in good faith but cannot guarantee or warrant the accuracy of this information nor warrant the condition of the vessel. A buyer should instruct his representatives, agents, or his surveyors, to investigate such details as the buyer desires validated. This vessel or yacht is offered subject to prior sale, price change, or withdrawal without notice.

PHOTOS

7469701_20200603133458324_1_XLARGE



7469701_20200603133510996_1_XLARGE



7469701_20200603133518253_1_XLARGE



7469701_20200603133523275_1_XLARGE



7469701_20200603133528413_1_XLARGE



7469701_20200603133534646_1_XLARGE



7469701_20200603133540251_1_XLARGE



7469701_20200603133505366_1_XLARGE
(1)



7469701_20200603133558249_1_XLARGE



7469701_20200603133604459_1_XLARGE



7469701_20200603133612429_1_XLARGE



7469701_20200603133623330_1_XLARGE



7469701_20200603133505366_1_XLARGE



7469701_20200603133544887_1_XLARGE



7469720_20200603142502725_1_XLARGE



7469720_20200603142510689_1_XLARGE



7469720_20200603142517680_1_XLARGE



7469720_20200603142523638_1_XLARGE



7469720_20200603142532817_1_XLARGE



7469720_20200603142540823_1_XLARGE



7469720_20200603142549509_1_XLARGE



7469720_20200603142559831_1_XLARGE



7469720_20200603142625329_1_XLARGE



7469720_20200603142651189_1_XLARGE



7469720_20200603142715554_1_XLARGE



7469720_20200603142751648_1_XLARGE



7469720_20200603144805854_1_XLARGE



7469720_20200603144831567_1_XLARGE



7469720_20200603144847199_1_XLARGE



7469720_20200603144858627_1_XLARGE



7469720_20200603144933236_1_XLARGE



7469720_20200603144956512_1_XLARGE



7469720_20200603145032041_1_XLARGE



7469720_20200603145108255_1_XLARGE



7469720_20200603145125062_1_XLARGE



7469720_20200604104558897_1_XLARGE



7469720_20200604104631454_1_XLARGE



7469720_20200604104703456_1_XLARGE



7469720_20200604104734621_1_XLARGE



7469720_20200604104805589_1_XLARGE



7469720_20200604104837267_1_XLARGE



7469720_20200604104820292_1_XLARGE



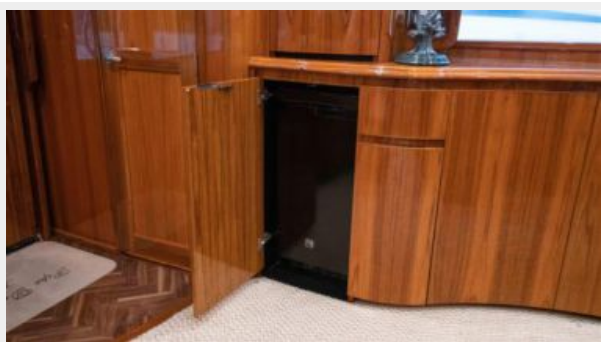
7469720_20200604104922946_1_XLARGE



7469720_20200604104909283_1_XLARGE



7469720_20200604104956604_1_XLARGE



7469720_20200604111919272_1_XLARGE



7469720_20200604111951531_1_XLARGE



7469720_20200604112022335_1_XLARGE



7469720_20200604112054545_1_XLARGE



7469720_20200604112125632_1_XLARGE



7469720_20200604112217438_1_XLARGE



7469720_20200604112430562_1_XLARGE



7469720_20200604112446818_1_XLARGE



7469720_20200604130534095_1_XLARGE



7469720_20200604130602338_1_XLARGE



7469720_20200604130635338_1_XLARGE



7469720_20200604130703016_1_XLARGE



7469720_20200604130733422_1_XLARGE



7469720_20200604130805240_1_XLARGE



7469720_20200604130833600_1_XLARGE



7469720_20200604130907230_1_XLARGE



7469720_20200604130935658_1_XLARGE



7469720_20200604133119498_1_XLARGE



7469720_20200604133150203_1_XLARGE



7469720_20200604153523152_1_XLARGE



7469720_20200604133219713_1_XLARGE



7469720_20200604153557857_1_XLARGE



7469720_20200604153627826_1_XLARGE



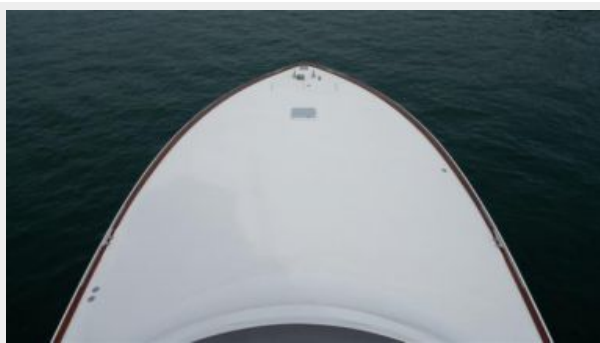
7469720_20200604153642579_1_XLARGE



7469720_20200604153710860_1_XLARGE



7469720_20200604154554646_1_XLARGE



7469720_20200604154625297_1_XLARGE



7469720_20200604154655958_1_XLARGE



7469720_20200604154727028_1_XLARGE



7469720_20200604160834672_1_XLARGE



7469720_20200604160858972_1_XLARGE



7469720_20200604160926742_1_XLARGE



7469720_20200604160958786_1_XLARGE



7469720_20200604161027469_1_XLARGE



7469720_20200604161057525_1_XLARGE



7469720_20200604161126528_1_XLARGE



7469720_20200604161155502_1_XLARGE



7469720_20200604161206902_1_XLARGE



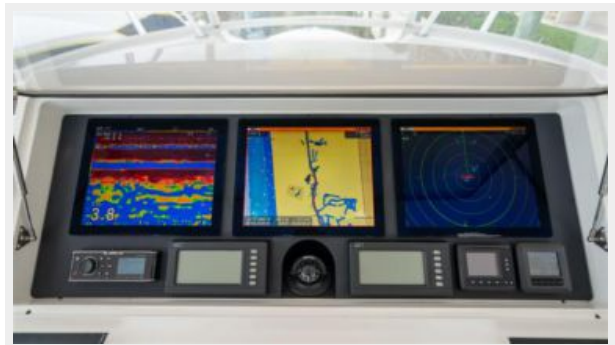
7469720_20200604161237066_1_XLARGE



7469720_20200604161303236_1_XLARGE



7469720_20200604161317352_1_XLARGE



7469720_20200604161330296_1_XLARGE



7469720_20200604161344470_1_XLARGE



7469720_20200604161412051_1_XLARGE



7469720_20200604161423008_1_XLARGE



7469720_20200604162033150_1_XLARGE



7469720_20200604162037920_1_XLARGE



7469720_20200604162043433_1_XLARGE



7469720_20200604162112604_1_XLARGE



7469720_20200604162414775_1_XLARGE



7469720_20200604162426712_1_XLARGE



7469720_20200604162454148_1_XLARGE



7469720_20200605123305820_1_XLARGE



7469720_20200605123338514_1_XLARGE



7469720_20200605123407254_1_XLARGE



7469720_20200605123440486_1_XLARGE



7469720_20200605123509753_1_XLARGE



7469720_20200605123539229_1_XLARGE



7469720_20200605123608682_1_XLARGE



7469720_20200605125030005_1_XLARGE



7469720_20200605125042530_1_XLARGE



7469720_20200605125108491_1_XLARGE



7469720_20200605125136022_1_XLARGE



7469720_20200605125203165_1_XLARGE



7469720_20200605125217393_1_XLARGE



7469720_20200605125230344_1_XLARGE



7469720_20200605125257169_1_XLARGE



CONTACTS

Andrey Shestakov, leading yacht broker of the sales department of Shestakov Yacht Sales Inc. Shestakov Yacht Sales Inc., the official representative of the Miami/Fort Lauderdale FL headquarters.

Contact details

Email: andrey@shestakovyachtsales.com

Web: shestakovyachtsales.com/en/

Telephones

USA: +1(954)274-4435

Office hours

Monday – Saturday: **9:00 - 21:00** EDT

Sunday: **closed**

Address



Harbour Towne Marina, 850 NE 3rd St,
STE 213, Dania, FL 33004