

## PIPE DREAMER — VIKING



**Судостроитель:** VIKING

**Год постройки:** 2015

**Модель:** Катер для спортивной рыбалки

**Цена:** ЦЕНА ЯХТЫ ПО ЗАПРОСУ

**Местонахождение:** United States

**Длина общая:** 70' 0" (21.34m)

**Ширина:** 19' 7" (5.97m)

**Макс. осадка:** 5' 6" (1.68m)

**Крейс. скорость:** 34 Kts. (39 MPH)

**Макс. скорость:** 41 Kts. (47 MPH)

Купить **PIPE DREAMER — VIKING** а также выбрать подходящую вам яхту из нашего каталога яхт вам поможет опытный яхтенный брокер Андрей Шестаков. На сегодняшний день компания **Shestakov Yacht Sales Inc.** имеет большое количество яхт в собственном списке продаж, а также тесно сотрудничает со всеми крупными яхтенными производителями по всему миру.

Для того чтобы купить яхту **PIPE DREAMER — VIKING** а также проконсультироваться по любому вопросу связанному с покупкой, продажей, чартером яхт позвоните по телефону **+7(918)465-66-44**.

# ОГЛАВЛЕНИЕ

ОГЛАВЛЕНИЕ	2
ХАРАКТЕРИСТИКИ	8
Обзор	8
Основная информация	9
Размеры	9
Скорость, вместимость и масса	9
Размещение	9
Корпус и палуба	9
Информация о двигателе	10
ПОДРОБНОЕ ОПИСАНИЕ	11
Notable Highlights	11
Salon	11
Galley	11
Day Head	12
Companionway	12
Master Stateroom	12
Master Stateroom Head	12
Forward Stateroom	13
Forward Stateroom Head	13
Crew Stateroom Aft	13
Crew Stateroom Head- Aft	13
Guest Stateroom- Port Forward	14
Guest Stateroom Head- Port Forward	14
Decor	14
Cockpit/ Deck Exterior	14
Flybridge	15
Engine Room	15
Mechanical	16

Hull	16
Electronics	16
Palm Beach Towers	17
Исключения	17
Отказ от ответственности	18
<b>ФОТОГРАФИИ</b>	<b>19</b>
7469701_20200603133458324_1_XLARGE	19
7469701_20200603133510996_1_XLARGE	19
7469701_20200603133518253_1_XLARGE	19
7469701_20200603133523275_1_XLARGE	19
7469701_20200603133528413_1_XLARGE	19
7469701_20200603133534646_1_XLARGE	19
7469701_20200603133505366_1_XLARGE (1)	20
7469701_20200603133540251_1_XLARGE	20
7469701_20200603133558249_1_XLARGE	20
7469701_20200603133604459_1_XLARGE	20
7469701_20200603133612429_1_XLARGE	20
7469701_20200603133623330_1_XLARGE	20
7469701_20200603133505366_1_XLARGE	21
7469701_20200603133544887_1_XLARGE	21
7469720_20200603142502725_1_XLARGE	21
7469720_20200603142510689_1_XLARGE	21
7469720_20200603142517680_1_XLARGE	21
7469720_20200603142523638_1_XLARGE	21
7469720_20200603142532817_1_XLARGE	21
7469720_20200603142540823_1_XLARGE	21
7469720_20200603142549509_1_XLARGE	22
7469720_20200603142559831_1_XLARGE	22
7469720_20200603142625329_1_XLARGE	22

7469720_20200603142651189_1_XLARGE	22
7469720_20200603142715554_1_XLARGE	22
7469720_20200603142751648_1_XLARGE	22
7469720_20200603144805854_1_XLARGE	22
7469720_20200603144831567_1_XLARGE	22
7469720_20200603144847199_1_XLARGE	23
7469720_20200603144858627_1_XLARGE	23
7469720_20200603144933236_1_XLARGE	23
7469720_20200603144956512_1_XLARGE	23
7469720_20200603145032041_1_XLARGE	23
7469720_20200603145108255_1_XLARGE	23
7469720_20200603145125062_1_XLARGE	23
7469720_20200604104558897_1_XLARGE	23
7469720_20200604104631454_1_XLARGE	24
7469720_20200604104703456_1_XLARGE	24
7469720_20200604104734621_1_XLARGE	24
7469720_20200604104805589_1_XLARGE	24
7469720_20200604104837267_1_XLARGE	24
7469720_20200604104820292_1_XLARGE	24
7469720_20200604104922946_1_XLARGE	25
7469720_20200604104909283_1_XLARGE	25
7469720_20200604104956604_1_XLARGE	25
7469720_20200604111919272_1_XLARGE	25
7469720_20200604111951531_1_XLARGE	25
7469720_20200604112022335_1_XLARGE	25
7469720_20200604112054545_1_XLARGE	26
7469720_20200604112125632_1_XLARGE	26
7469720_20200604112217438_1_XLARGE	26
7469720_20200604112430562_1_XLARGE	26

7469720_20200604112446818_1_XLARGE	26
7469720_20200604130534095_1_XLARGE	26
7469720_20200604130602338_1_XLARGE	27
7469720_20200604130635338_1_XLARGE	27
7469720_20200604130703016_1_XLARGE	27
7469720_20200604130733422_1_XLARGE	27
7469720_20200604130805240_1_XLARGE	27
7469720_20200604130833600_1_XLARGE	27
7469720_20200604130907230_1_XLARGE	28
7469720_20200604130935658_1_XLARGE	28
7469720_20200604133119498_1_XLARGE	28
7469720_20200604133150203_1_XLARGE	28
7469720_20200604153523152_1_XLARGE	28
7469720_20200604133219713_1_XLARGE	28
7469720_20200604153557857_1_XLARGE	29
7469720_20200604153627826_1_XLARGE	29
7469720_20200604153642579_1_XLARGE	29
7469720_20200604153710860_1_XLARGE	29
7469720_20200604154554646_1_XLARGE	29
7469720_20200604154625297_1_XLARGE	29
7469720_20200604154655958_1_XLARGE	30
7469720_20200604154727028_1_XLARGE	30
7469720_20200604160834672_1_XLARGE	30
7469720_20200604160858972_1_XLARGE	30
7469720_20200604160926742_1_XLARGE	30
7469720_20200604160958786_1_XLARGE	30
7469720_20200604161027469_1_XLARGE	30
7469720_20200604161057525_1_XLARGE	30
7469720_20200604161126528_1_XLARGE	31

7469720_20200604161155502_1_XLARGE	31
7469720_20200604161206902_1_XLARGE	31
7469720_20200604161237066_1_XLARGE	31
7469720_20200604161303236_1_XLARGE	31
7469720_20200604161317352_1_XLARGE	31
7469720_20200604161330296_1_XLARGE	31
7469720_20200604161344470_1_XLARGE	31
7469720_20200604161412051_1_XLARGE	32
7469720_20200604161423008_1_XLARGE	32
7469720_20200604162033150_1_XLARGE	32
7469720_20200604162037920_1_XLARGE	32
7469720_20200604162043433_1_XLARGE	32
7469720_20200604162112604_1_XLARGE	32
7469720_20200604162414775_1_XLARGE	32
7469720_20200604162426712_1_XLARGE	32
7469720_20200604162454148_1_XLARGE	33
7469720_20200605123305820_1_XLARGE	33
7469720_20200605123338514_1_XLARGE	33
7469720_20200605123407254_1_XLARGE	33
7469720_20200605123440486_1_XLARGE	33
7469720_20200605123509753_1_XLARGE	33
7469720_20200605123539229_1_XLARGE	34
7469720_20200605123608682_1_XLARGE	34
7469720_20200605125030005_1_XLARGE	34
7469720_20200605125042530_1_XLARGE	34
7469720_20200605125108491_1_XLARGE	34
7469720_20200605125136022_1_XLARGE	34
7469720_20200605125203165_1_XLARGE	34
7469720_20200605125217393_1_XLARGE	34

---

7469720_20200605125230344_1_XLARGE	35
7469720_20200605125257169_1_XLARGE	35
КОНТАКТЫ	36
Контактная информация	36
Телефоны	36
Время работы	36
Адрес	36

# ХАРАКТЕРИСТИКИ

## Обзор

I custom built the 2015 70' "PIPE DREAMER" for a 4 time repeat Viking owner. He is also a NJ resident and spent a lot of time with his captain inspecting his boat every weekend making sure she was built to his exact specifications and nothing was missed. He put his 20 plus years of boating experience into the build along with my personal input as well as one of the senior sales guys at Viking. This one is truly a very special built 70 Viking and has probably one of the prettiest interiors of all the boats I helped build. She is a real head turner and has been captain maintained and serviced at the Viking service center since new. A sleek aggressive look, with a sharp-edged feature line that runs from the front of the house to the cockpit and nearly 100 inches of forward free board. She was also one of the "High Performance" boats Viking built pulling almost 20k pounds of weight out by using Kevlar parts and deck house. She tops out over 41 knots and is truly a very special sport fish.

"PIPE DREAMER" is equipped with 2,600-hp MTU M94 diesels, with extended warranties through March 25th, 2021 or 3300 hours. Viking's tough build is as well known as its ability to run fast with the handling of a sports car allows better, sharper turning and responsiveness with superior tracking.

The 70' "PIPE DREAMER's" speed will come in handy on tournament day, which this boat was truly built for. From her 206-square-foot cockpit and Release Marine fighting chair to her in-deck live well, mezzanine bait stowage, freezer, and more, this 70' can chase the big ones - anywhere.

Palm Beach Tower; Costa flying-bridge enclosure; in-deck livewell; Release teak helm pod; mezzanine A/C; forward window mask; Side-Power bow thruster; custom hull color paint and ceramic coated in 2020; Sea Recovery watermaker; LCD TVs in guest staterooms; Premier edition upgraded decor package; 600-gal. auxiliary fuel tank; Release helm chairs and fighting chair; Eskimo ice chipper; 46' Outrigger Rupp Big Riggs HD, 4 Spreader, Bridge Release.

With the flying-bridge helm setup, the massive cockpit, and enough speed to get anywhere in a hurry, the 70' "PIPE DREAMER" is one of the most complete blue water fishing packages on the market.



## Основная информация

---

**Тип судна:** Катер для спортивной рыбалки

**Модельный год:** 2015

**Год постройки:** 2015

**Страна:** United States

## Размеры

---

**Длина общая:** 70' 0" (21.34m)

**Ширина:** 19' 7" (5.97m)

**Макс. осадка:** 5' 6" (1.68m)

## Скорость, вместимость и масса

---

**Крейс. скорость:** 34 Kts. (39 MPH)

**Макс. скорость:** 41 Kts. (47 MPH)

**Вместимость сточного бака:** 365 Gallons **Объем топливного бака:** 2343 Gallons

## Размещение

---

**Всего кают:** 4

**Всего ком. состава:** 5

**Каюты экипажа:** 1

**Комм. состав экипажа:** 1

## Корпус и палуба

---

**Материал корпуса:** Fiberglass

## Информация о двигателе

---

**Двигатели:** 2

**Производитель:** MTU

**Модель:** 16V 2000 M94

**Тип двигателя:** Inboard

**Тип топлива:** Diesel

---

# ПОДРОБНОЕ ОПИСАНИЕ

---

## Notable Highlights

---

- MTU Extended Protection until March 25, 2021 or 3,300 hours
- Top speed 42 knots
- Cruising speed 33 knots @ 165 GPH
- Carbon Fiber Performance Package
- Seeker M26
- GOST Watch HD Security System

## Salon

---

- Carpet runner, partial, canvas
- Carpet runner, full, canvas
- Large AC vent in pantry
- Custom Amtico flooring at salon entrance way extended further than normal
- Teak crown molding around upper galley cabinets, day head and electrical panel
- SubZero clear ice maker- large cubes
- Cocktail table
- Salon door with electric door opener
- Dimmers for quartz lights
- Teak wire box
- Teak trim where Amtico floor meets carpet
- 46" Samsung TV on pop-up, Bose V35 entertainment system with Blu Ray
- Teak Valences and Lambrequins
- AC receptacle under dinette table
- Teak strips in salon headliner
- Dimmer for overhead LED lights
- Pull-out drawers in forward pantry area
- Custom bottle storage in between dinette and sofa
- Channel glass above dinette
- Custom wine glass storage

## Galley

---

- Custom Amtico flooring
- Golden Beach counter-top
- Golden Beach granite peninsula top with white rope lighting underneath overhang
- Custom tile back-splash
- Conventional microwave with convection

- Pull out trash bin
- 110V outlet next to switch on bottom of upper cabinet above sink
- Stainless steel under-mount sink
- Four-burner surface mount range
- Satin nickel faucet
- Large exhaust fan over cook-top
- Custom cup holders, dividers and shelves in pantry
- (2) SubZero freezers and (4) SubZero refrigerators, drawer style

## Day Head

---

- Towel bars and rings in brushed nickel to match faucets
- Hammered oil rubbed bronze sink with country rubbed faucet
- Custom Amtico flooring
- Golden Beach with chipped edge granite vanity top

## Companionway

---

- Vertical teak strips between wall panels in companionway
- Costa canvas carpet runner with step covers
- Outboard storage compartments
- Linen closet
- Washer/Dryer

## Master Stateroom

---

- Teak strips between headliner
- Custom sconce
- System 8 Mattress
- Additional 110v outlets on each side of bed
- 32" Samsung TV
- Additional telephone outlet
- Teak end table tops

## Master Stateroom Head

---

- Mirrored ceiling
- Custom Amtico flooring
- Golden Beach Granite vanity top
- Teak face on lower vanity

- Mirror around upper vanity insert
- Satin Nickel Shower fixtures
- Brushed Nickel towel bars and rings

---

## Forward Stateroom

---

- Island queen bunk with storage below
- Mattress Viking Slumber #8
- Samsung 26" TV

---

## Forward Stateroom Head

---

- Mirror ceiling
- Custom Amtico flooring
- Brushed aluminum shower door
- Golden Beach vanity top polished
- Teak face on lower vanity
- Mirror around upper vanity insert
- Satin nickel shower fixtures
- Brushed nickel towel bars and rings

---

## Crew Stateroom Aft

---

- 19" flat screen TV
- Hanging locker on aft bulkhead
- Dimmer on overhead LED lights
- Teak locker top
- Mattress Viking Slumber #6
- Engine room access

---

## Crew Stateroom Head- Aft

---

- Mirror ceiling
- Custom Amtico flooring
- Chrome shower door
- Golden Beach vanity top
- Teak face on lower vanity
- Mirror around upper vanity insert
- Satin nickel shower fixtures

---

## Guest Stateroom- Port Forward

---

- Speakers in soffit
- 19" Samsung TV
- Hinged upper bunk
- Teak locker storage top
- Mattress Viking Slumber #6
- Hanging locker raised to full height with drawers below

---

## Guest Stateroom Head- Port Forward

---

- Golden Beach vanity top
- Chrome shower door
- Satin nickel shower fixtures
- Mirror ceiling

---

## Decor

---

- Custom Decor
- Prestige Upgraded Decor
- Sofa, upgraded style, "dewberry" with storage arm
- Teak Valances and Lambrequins
- Custom wallpaper material
- Custom wallpaper installation
- Custom headliner material throughout boat
- Interior wood is random teak throughout
- Carpet throughout
- Appliqued bedspread and shams in master stateroom
- Custom bar stools with backs
- Salon door type catches on stateroom doors
- Brushed nickel hardware throughout
- Brushed nickel cover-plates for switches and receptacles throughout
- Satin nickel interior light trim throughout
- LED interior lights throughout

---

## Cockpit/ Deck Exterior

---

- Salon forward window black mask
- Deck house made out of carbon fiber
- VC-Offshore bottom paint
- Lewmar V4 windlass

- Forward bilge and anchor locker painted with Awlgrip
- Magnetic switches for all bilge lights
- Freshwater wash down at bow inside anchor locker
- Side mounted top rails that follow top of salon window
- Anchor locker painted
- Polished stainless removable fairlead with anchor
- Sliding fender track under rub rail. Running from transom to edge of cabin
- Cruisair “Cool Breeze” mezzanine air system
- Top mounted grill in tackle center
- Additional fresh water outlets (1 on each side)
- 12v and 24v outlets for electric reels
- Fusion remote
- 15” KEP monitor
- Transom Livewell with window / light
- Green / White / Red lights
- Light in fighting chair - green

## Flybridge

---

- Release teak helm pod
- Dedicated fresh water feed for tower with labeled shutoff valve in forward FB locker
- Switch in radio box for electronic drop-down overhead box in hardtop
- Split radio box lids
- Watermaker control panel
- Cushions are bolster style with ultra leather fabric - New 2019
- Single lever control handles with bow thruster buttons in handles
- Removable flybridge jump seat backrest
- Rod racks under both side bench seats
- Additional Octoplex control
- Hatch over bridge ladder
- Electronic trolling valves
- Electronic single lever controls for helm pod
- Recessed electronics boxes
- Large bridge freezer box forward of helm
- Refrigerated bridge drink box
- Dedicated batteries on flybridge for electronics
- Handrail on side of helm console above helm access door
- (3) Release Marine Trillion Series helm chairs with Ultra Leather

## Engine Room

---

- 1400 GPD watermaker with auto back flush
- MTU 16V-2000 M94- 2600MHP - With warranty

- Headhunter head system
- Eskimo ice chipper that dumps into port fish box - New 2020
- Commercial pre-filters for watermaker
- Awlgrip brass thru hulls and sea strainers in engine room and fwd bilges
- Line run from oil change system to cockpit dockside box
- Headhunter freshwater pump
- 110V Outlet on aft bulkhead at entrance way
- Generator gas/water separator for both generators
- (2) toolboxes 4-drawer, 16" wide, painted white
- Back up freshwater pump
- Engine room cameras
- WillyVac in place of engine room clean out bilge pump
- Dual power steering pumps
- Spot Zero water maker
- New ISO transformers

---

## Mechanical

- Twin Onan 27kw Generators - 6/1/2020 Port 2008 Hours Starboard 2002 Hours
- Second chiller logic control panel in forward pantry
- T in dockside water manifold to fill water tank from cockpit
- Deck fill for freshwater tank

---

## Hull

- (6) molded in lumishore underwater lights
- DC bow thruster
- Custom hull color - Yellow painted ceramic coated 2020
- Bottom paint - VC Offshore
- New style air vents
- Fiberglass side thru hulls
- Performance package - Kevlar house and decks
- SeaKeeper M26,000 Gyro - Annual service done 2019 5836 hours

---

## Electronics

- (3) KEP multifunctional displays
- Radar 1-Furuno Navnet 3D 25kw 96NM range
- Radar 2- Garmin GMR 404 HD
- Garmin GPS Map 8208
- Furuno Navnet 3D



- Furuno FCV 1200 sounder
- Garmin GSD-26 Chirp sounder
- Furuno RD33 data organizer and display
- Garmin GHP20 Viper autopilot
- (2) ICOM-M604 VHF
- Fusion MS-IP700i Stereo
- FLIR M625L thermo with low light
- KVH Tracvision HD7 satellite TV with Triamerica

## Palm Beach Towers

---

- 9' Gap, (4) Antenna, Stands-offs, 3-Sided Track on perimeter rail
- (8) Hardtop lights multi-color with Fiberglass recess
- Radar Pod Large Oval Style - with larger Sliding Door for (4) teaser reels (2 US-8, 2 US-9)
- Molded Standing Platform with Coupler Box On Platform
- Molded 3 in 1 24V-LED Light Pod with stainless steel Bezel
- Molded 24V-LED Light Forward Platform stainless steel Bezel
- (2) Molded single maxilume LED spreader light facing outboard each side platform
- Control Box 65" Pod style for single lever controls with mounted compass
- Trim tab switch on control box
- Control box cover
- Top of control box painted satin black
- Tower sunshade frame painted matte black
- Painted underside hardtop Satin
- Painted underside platform & tower sunshade black
- (6) Rod Holders Polished Aft Legs, PBT Style
- Controls & Steering MTU Controls pod style single lever for 2600 HP
- (2) Stainless steel control handles with bow thruster push buttonsBow thruster control
- 46' Outrigger Rupp Big Riggs HD, 4 Spreader, Bridge ReleaseRupp Center Rigger
- Fresh water washdown
- Molded LED Nav. Lights - Port & Starboard
- Molded LED Stern Light Molded
- (4) Release Outrigger stainless steel Grommets mounted in cockpit gunnels
- (2) Custom multi-color LED Lights with fiberglass recess in sunshade
- (4) Custom multi-color LED Lights under platform with fiberglass recess
- Upgraded hardtop, platform & tower sunshade fiberglass fabricated using carbon fiber
- Rupp Rollers for Outriggers IPO eye bolts

## Исключения

---

При продаже яхты исключаются личные вещи владельца.

---

## Отказ от ответственности

---

Компания предоставляет описание судна или яхты добросовестно, но не может гарантировать точность этой информации, а также не ручается за техническое состояние. Покупатель должен проинструктировать своих агентов или оценщиков исследовать представленную информацию более подробно, по собственному желанию. Продажа судна или яхты, изменение цены или снятие с продажи будет происходить без предварительного уведомления.

# ФОТОГРАФИИ

7469701\_20200603133458324\_1\_XLARGE



7469701\_20200603133510996\_1\_XLARGE



7469701\_20200603133518253\_1\_XLARGE



7469701\_20200603133523275\_1\_XLARGE



7469701\_20200603133528413\_1\_XLARGE



7469701\_20200603133534646\_1\_XLARGE



7469701\_20200603133540251\_1\_XLARGE



7469701\_20200603133505366\_1\_XLARGE  
(1)



7469701\_20200603133558249\_1\_XLARGE



7469701\_20200603133604459\_1\_XLARGE



7469701\_20200603133612429\_1\_XLARGE



7469701\_20200603133623330\_1\_XLARGE



7469701\_20200603133505366\_1\_XLARGE



7469701\_20200603133544887\_1\_XLARGE



7469720\_20200603142502725\_1\_XLARGE



7469720\_20200603142510689\_1\_XLARGE



7469720\_20200603142517680\_1\_XLARGE



7469720\_20200603142523638\_1\_XLARGE



7469720\_20200603142532817\_1\_XLARGE



7469720\_20200603142540823\_1\_XLARGE



7469720\_20200603142549509\_1\_XLARGE



7469720\_20200603142559831\_1\_XLARGE



7469720\_20200603142625329\_1\_XLARGE



7469720\_20200603142651189\_1\_XLARGE



7469720\_20200603142715554\_1\_XLARGE



7469720\_20200603142751648\_1\_XLARGE



7469720\_20200603144805854\_1\_XLARGE



7469720\_20200603144831567\_1\_XLARGE



7469720\_20200603144847199\_1\_XLARGE



7469720\_20200603144858627\_1\_XLARGE



7469720\_20200603144933236\_1\_XLARGE



7469720\_20200603144956512\_1\_XLARGE



7469720\_20200603145032041\_1\_XLARGE



7469720\_20200603145108255\_1\_XLARGE



7469720\_20200603145125062\_1\_XLARGE



7469720\_20200604104558897\_1\_XLARGE



7469720\_20200604104631454\_1\_XLARGE



7469720\_20200604104703456\_1\_XLARGE



7469720\_20200604104734621\_1\_XLARGE



7469720\_20200604104805589\_1\_XLARGE



7469720\_20200604104837267\_1\_XLARGE



7469720\_20200604104820292\_1\_XLARGE





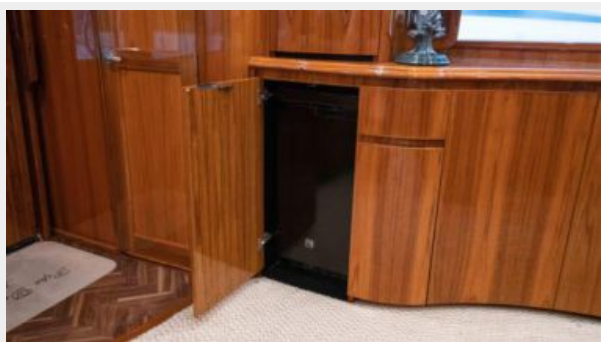
7469720\_20200604104922946\_1\_XLARGE



7469720\_20200604104909283\_1\_XLARGE



7469720\_20200604104956604\_1\_XLARGE



7469720\_20200604111919272\_1\_XLARGE



7469720\_20200604111951531\_1\_XLARGE



7469720\_20200604112022335\_1\_XLARGE



7469720\_20200604112054545\_1\_XLARGE



7469720\_20200604112125632\_1\_XLARGE



7469720\_20200604112217438\_1\_XLARGE



7469720\_20200604112430562\_1\_XLARGE



7469720\_20200604112446818\_1\_XLARGE



7469720\_20200604130534095\_1\_XLARGE



7469720\_20200604130602338\_1\_XLARGE



7469720\_20200604130635338\_1\_XLARGE



7469720\_20200604130703016\_1\_XLARGE



7469720\_20200604130733422\_1\_XLARGE



7469720\_20200604130805240\_1\_XLARGE



7469720\_20200604130833600\_1\_XLARGE



7469720\_20200604130907230\_1\_XLARGE



7469720\_20200604130935658\_1\_XLARGE



7469720\_20200604133119498\_1\_XLARGE



7469720\_20200604133150203\_1\_XLARGE



7469720\_20200604153523152\_1\_XLARGE



7469720\_20200604133219713\_1\_XLARGE



7469720\_20200604153557857\_1\_XLARGE



7469720\_20200604153627826\_1\_XLARGE



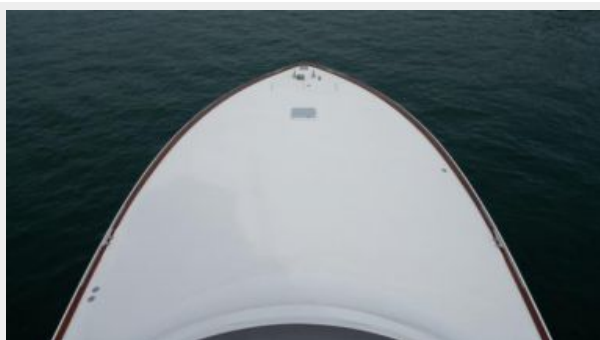
7469720\_20200604153642579\_1\_XLARGE



7469720\_20200604153710860\_1\_XLARGE



7469720\_20200604154554646\_1\_XLARGE



7469720\_20200604154625297\_1\_XLARGE



7469720\_20200604154655958\_1\_XLARGE



7469720\_20200604154727028\_1\_XLARGE



7469720\_20200604160834672\_1\_XLARGE



7469720\_20200604160858972\_1\_XLARGE



7469720\_20200604160926742\_1\_XLARGE



7469720\_20200604160958786\_1\_XLARGE



7469720\_20200604161027469\_1\_XLARGE



7469720\_20200604161057525\_1\_XLARGE



7469720\_20200604161126528\_1\_XLARGE



7469720\_20200604161155502\_1\_XLARGE



7469720\_20200604161206902\_1\_XLARGE



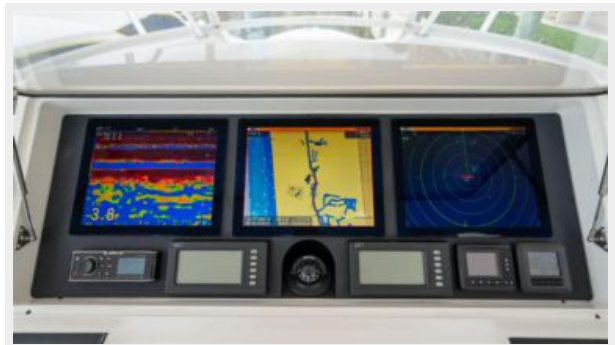
7469720\_20200604161237066\_1\_XLARGE



7469720\_20200604161303236\_1\_XLARGE



7469720\_20200604161317352\_1\_XLARGE



7469720\_20200604161330296\_1\_XLARGE



7469720\_20200604161344470\_1\_XLARGE



7469720\_20200604161412051\_1\_XLARGE



7469720\_20200604161423008\_1\_XLARGE



7469720\_20200604162033150\_1\_XLARGE



7469720\_20200604162037920\_1\_XLARGE



7469720\_20200604162043433\_1\_XLARGE



7469720\_20200604162112604\_1\_XLARGE



7469720\_20200604162414775\_1\_XLARGE



7469720\_20200604162426712\_1\_XLARGE





7469720\_20200604162454148\_1\_XLARGE



7469720\_20200605123305820\_1\_XLARGE



7469720\_20200605123338514\_1\_XLARGE



7469720\_20200605123407254\_1\_XLARGE



7469720\_20200605123440486\_1\_XLARGE



7469720\_20200605123509753\_1\_XLARGE



7469720\_20200605123539229\_1\_XLARGE



7469720\_20200605123608682\_1\_XLARGE



7469720\_20200605125030005\_1\_XLARGE



7469720\_20200605125042530\_1\_XLARGE



7469720\_20200605125108491\_1\_XLARGE



7469720\_20200605125136022\_1\_XLARGE



7469720\_20200605125203165\_1\_XLARGE



7469720\_20200605125217393\_1\_XLARGE



7469720\_20200605125230344\_1\_XLARGE



7469720\_20200605125257169\_1\_XLARGE



# КОНТАКТЫ

---

Андрей Шестаков (Andrey Shestakov) – ведущий яхтенный брокер отдела продаж яхт и судов компании Shestakov Yacht Sales Inc. Официальный представитель Shestakov Yacht Sales Inc. для русскоговорящих клиентов в центральном офисе компании в Майами/Форт Лодердейл/Флорида/США.

## Контактная информация

---

Email: [andrey@shestakovyachtsales.com](mailto:andrey@shestakovyachtsales.com)

Web: [shestakovyachtsales.com](http://shestakovyachtsales.com)

## Телефоны

---

Краснодарский край: **+7(918)465-66-44**

США, Майами, Флорида: **+1(954)274-4435**

## Время работы

---

Понедельник – Суббота: **9:00 - 21:00**  
EDT

Воскресенье: **Закрето**

## Адрес

---



Harbour Towne Marina, 850 NE 3rd St,  
STE 213, Dania, FL 33004