

RITZ SEA



Year Built: 1995

Model: Cruising Yacht

Price: PRICE ON APPLICATION

LOA: 34' (10.36mm)

Beam: 11

Max Draft: 2' 11" (0.89mm)

Our experienced yacht broker, Andrey Shestakov, will help you choose and buy a yacht that best suits your needs **Ritz Sea** — n/a from our catalogue. Presently, at Shestakov Yacht Sales Inc., we have a wide variety of yachts available on our sale's list. We also work in close contact with all the big yacht manufacturers from all over the world.

If you would like to buy a yacht **Ritz Sea** — n/a or would like help answering any questions concerning purchasing, selling or chartering a yacht, please call **+1(954)274-4435**

TABLE OF CONTENTS

TABLE OF CONTENTS	2
SPECIFICATIONS	3
Overview	3
Basic Information	3
Dimensions	3
Speed, Capacities and Weight	3
Accommodations	4
Hull and Deck Information	4
Engine Information	4
PHOTOS	5
CONTACTS	13
Contact details	13
Telephones	13
Office hours	13
Address	13

SPECIFICATIONS

Overview

Welcome Aboard "Ritz Sea", A Well maintained boat that the next owner will appreciate. Custom cockpit cushions allow easy access to engine compartment. A centerline companionway leads down into the spacious interior where the mid-cabin floor plan will sleep six adults. A curved settee - elevated from the salon sole - dominates the main cabin, and the fore and aft sleeping areas both have privacy curtains. Headroom and ventilation are excellent. "RITZ SEA" is fast and easy to handle. She gets under most bridges in the waterway and is great on fuel. Steal some quiet time away on the weekends. She is ready for overnight trips to your favorite marina with plenty of room to relax. **Electronics:** Garmin GPSmap 540 Standard Horizon Eclipse & VHF Raymarine ST 40 Digital Depth Finder Ritchie 3.5" Magnetic Compass Sony Stereo Orion 9" Color CRT TV/DVD Player **GALLEY:** Two Burner Electric Cook Top Norcold 6 cu. ft. Dual Voltage Refrigerator Galaxy Microwave Oven Toastmaster Toaster Oven . Wet Bar on Aft Deck . Cockpit Cushions . Mermaid A/C with Heat Pump . Full Head with Toilet and Shower . Water Heater **Safety:** (8) Type III Adult Life Jackets (1) 20" Type IV Ring Buoy Navigation Lights and Jabsco Remote Control Spot Light (1) B-1 Dry Chemical Fire Extinguisher and (1) Fireboy HALON Xintex Gasoline Fume Detector **MISC FEATURES:** Lewmar Pro-Fish Windlass with Anchor Bennett Trim Tabs Full Canvass Enclosures LAST BOTTOM JOB, AUGUST 2018

Basic Information

Category: Cruising Yacht

Sub Category: Express

Model Year: 1995

Year Built: 1995

Dimensions

LOA: 34' (10.36mm)

Beam: 11

Max Draft: 2' 11" (0.89mm)

Speed, Capacities and Weight

Water Capacity: 40 Gallons

Holding Tank: 25 Gal Gallons

Fuel Capacity: 180 Gal Gallons

Accommodations

Total Cabins: 1

Total Heads: 1

Hull and Deck Information

Hull Material: Fiberglass

Engine Information

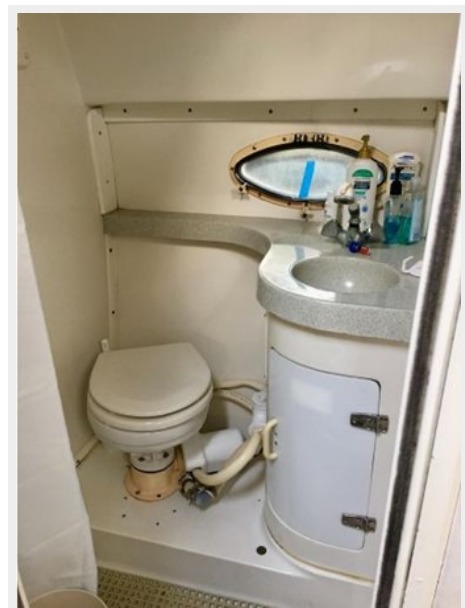
Engines: 2

Manufacturer: Crusader

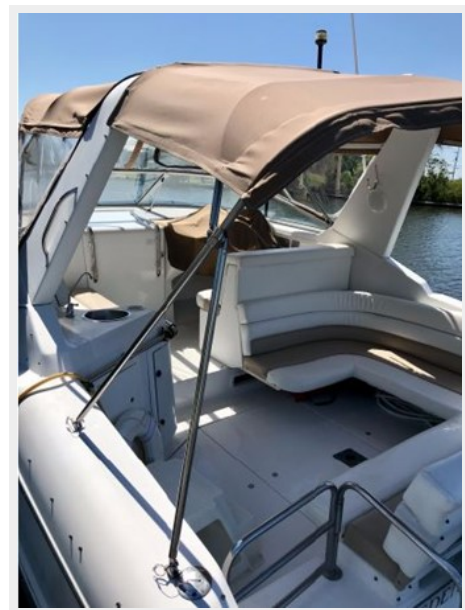
Engine Type: Inboard

Fuel Type: Gas

PHOTOS















CONTACTS

Andrey Shestakov, leading yacht broker of the sales department of Shestakov Yacht Sales Inc. Shestakov Yacht Sales Inc., the official representative of the Miami/Fort Lauderdale FL headquarters.

Contact details

Email: andrey@shestakovyachtsales.com

Web: shestakovyachtsales.com/en/

Telephones

USA: +1(954)274-4435

Office hours

Monday – Saturday: **9:00 - 21:00** EDT

Sunday: **closed**

Address



Harbour Towne Marina, 850 NE 3rd St,
STE 213, Dania, FL 33004