

1987 CATALINA 34 — CATALINA



Builder: CATALINA

Year Built: 1987

Model: Cruising Sailboat

Price: PRICE ON APPLICATION

Location: United States

LOA: 34' 6" (10.52m)

Beam: 11' 9" (3.58m)

Max Draft: 5' 9" (1.75m)

Cruise Speed: 6 Kts. (7 MPH)

Our experienced yacht broker, Andrey Shestakov, will help you choose and buy a yacht that best suits your needs 1987 Catalina 34 — CATALINA from our catalogue. Presently, at Shestakov Yacht Sales Inc., we have a wide variety of yachts available on our sale's list. We also work in close contact with all the big yacht manufacturers from all over the world.

If you would like to buy a yacht 1987 Catalina 34 — CATALINA or would like help answering any questions concerning purchasing, selling or chartering a yacht, please call +1(954)274-4435

TABLE OF CONTENTS

TABLE OF CONTENTS	2
SPECIFICATIONS	4
Overview	4
Basic Information	4
Dimensions	4
Speed, Capacities and Weight	4
Accommodations	5
Hull and Deck Information	5
Engine Information	5
DETAILED INFORMATION	6
Overview	6
Exclusions	7
Disclaimer	7
PHOTOS	8
1	8
2	8
3	8
4	8
6	9
5	9
7	9
8	9
10	10
9	10
12	10
11	10
CONTACTS	11
Contact details	11

Telephones	11
Office hours	11
Address	11

SPECIFICATIONS

Overview

One of Catalina's most popular models ever, the 34 combines good performance with a spacious, comfortable two-stateroom interior layout. She will sleep 7 and she is in turn key condition fully equipped to sail away today. The Catalina 34 delivers big boat cruising at an affordable price. She is in the water and ready to go. Ask about discounted slip and storage in an upscale Rhode Island marina where there are no sales or use taxes. This is a preliminary listing and more information will follow. Please see the Full Description section for additional information.

Basic Information

Category: Cruising Sailboat

Model Year: 1987

Year Built: 1987

Country: United States

Dimensions

LOA: 34' 6" (10.52m)

LWL: 29' 10" (9.09m)

Beam: 11' 9" (3.58m)

Max Draft: 5' 9" (1.75m)

MFG Length: 34' 0" (10.36m)

Speed, Capacities and Weight

Cruise Speed: 6 Kts. (7 MPH)

Displacement: 11950 Pounds

Water Capacity: 76 Gallons

Holding Tank: 18 Gallons

Fuel Capacity: 23 Gallons

Accommodations

Total Cabins: 2

Total Heads: 1

Hull and Deck Information

Hull Material: Fiberglass

Engine Information

Engines: 1

Manufacturer: westerbeke

Model: 30B

Engine Type: Inboard

Fuel Type: Diesel

DETAILED INFORMATION

Overview

Accommodations

- 2 private cabins and large salon
- main salon has large dinette to starboard that converts to a double berth
- settee sleeping one is located to port.
- V-berth in forward cabin with hanging locker and drawers
- sit-down nav station with hanging locker if aft of table
- substantial L-shaped galley has plenty of storage.
- full sized aft cabin for two has a hanging locker and teak and holly sole.
- 7 opening ports with screens and three hatches for light and ventilation.

Galley and Head

- Galley has 2 burner CSI stove with oven and CNG fuel
- double stainless sinks
- hot and cold pressure water(needs work)
- large ice box
- fully enclosed head with hand shower, located aft to port

Electronics

- GPS/Chartplotter
- Raymarine Radar
- West Marine VHF radio w/DSC
- Navman speed/depth/wind at helm and at nav station in cabin
- Ritchie pedestal compass

Sails:

- Mainsail with Dutchman system
- 135% Genoa
- Hood Seafurl System
- Inboard and outboard Genoa tracks
- Whisker pole

Canvas:

- Blue dodger and bimini

- Blue mainsail cover

Hull and Deck

- Stainless bow and stern pulpits w/boarding ladder
- double lifelines with gates port and starboard
- 3 bladed prop
- 2 Lewmar ST 46 primary winches
- 2 Lewmar 30 Coachroof winches
- 2 fire ext.
- 4 life jackets
- Dock lines and fenders
- cockpit Dodger
- Cockpit table
- 25 pound CQR with 40' 5/16 chain anchor
- 18 lb Danforth w/ 150' of 5/8" rode

Electrical

- 12 V Electrical panel w/breakers
- 110 v Shore power w/cable
- battery selector switch
- 2 deep cycle house batteries
- 1 starting battery
- battery charger 15 amp
- 6 gal. hot water heater
- electric bilge pump

Exclusions

Owner's personal belongings.

Disclaimer

The Company offers the details of this vessel or yacht in good faith but cannot guarantee or warrant the accuracy of this information nor warrant the condition of the vessel. A buyer should instruct his representatives, agents, or his surveyors, to investigate such details as the buyer desires validated. This vessel or yacht is offered subject to prior sale, price change, or withdrawal without notice.

PHOTOS

1



2



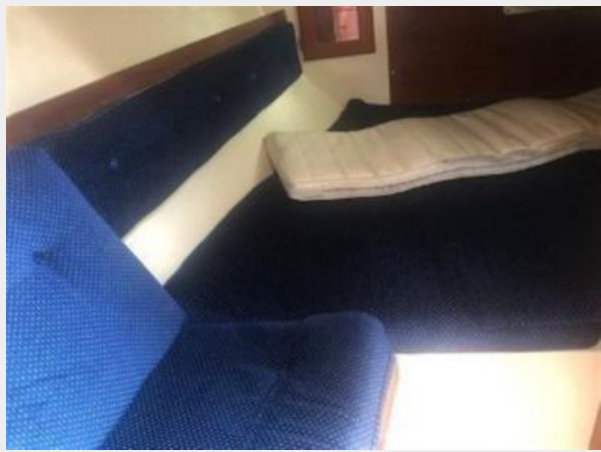
3



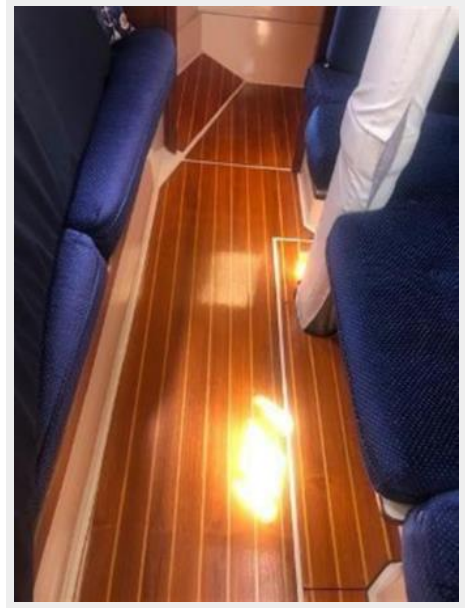
4



5



6



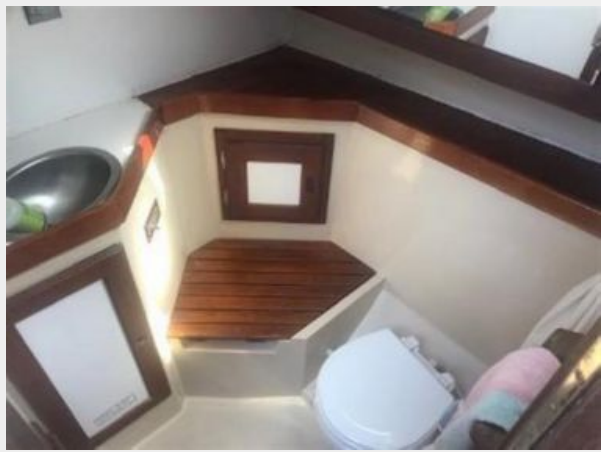
7



8



9



10



12



11



CONTACTS

Andrey Shestakov, leading yacht broker of the sales department of Shestakov Yacht Sales Inc. Shestakov Yacht Sales Inc., the official representative of the Miami/Fort Lauderdale FL headquarters.

Contact details

Email: andrey@shestakovyachtsales.com

Web: shestakovyachtsales.com/en/

Telephones

USA: +1(954)274-4435

Office hours

Monday – Saturday: **9:00 - 21:00** EDT

Sunday: **closed**

Address



Harbour Towne Marina, 850 NE 3rd St,
STE 213, Dania, FL 33004