

1988 HATTERAS 65 MOTOR YACHT — HATTERAS



Builder: HATTERAS

Year Built: 1988

Model: Motor Yacht

Price: PRICE ON APPLICATION

Location: United States

LOA: 65' 0" (19.81m)

Beam: 18' 2" (5.54m)

Min Draft: 5' 6" (1.68m)

Our experienced yacht broker, Andrey Shestakov, will help you choose and buy a yacht that best suits your needs 1988 Hatteras 65 Motor Yacht — HATTERAS from our catalogue. Presently, at Shestakov Yacht Sales Inc., we have a wide variety of yachts available on our sale's list. We also work in close contact with all the big yacht manufacturers from all over the world.

If you would like to buy a yacht 1988 Hatteras 65 Motor Yacht — HATTERAS or would like help answering any questions concerning purchasing, selling or chartering a yacht, please call **+1(954)274-4435**

TABLE OF CONTENTS

TABLE OF CONTENTS	2
SPECIFICATIONS	6
Overview	6
Basic Information	6
Dimensions	6
Speed, Capacities and Weight	6
Accommodations	6
Hull and Deck Information	7
Engine Information	7
DETAILED INFORMATION	8
Overview	8
Exclusions	10
Disclaimer	10
PHOTOS	11
3	11
2	11
4	11
5	11
6	11
7	11
8	12
9	12
10	12
11	12
12	12
13	12
14	13
15	13

16	13
17	13
18	13
19	13
20	14
21	14
22	14
23	14
24	14
25	14
26	15
27	15
28	15
29	15
30	15
31	15
32	16
33	16
34	16
35	16
36	16
37	16
38	17
39	17
40	17
41	17
42	17
43	17
44	18

45	18
46	18
47	18
48	18
49	18
50	19
51	19
52	19
53	19
54	19
55	19
56	20
57	20
58	20
59	20
60	20
61	20
62	21
63	21
64	21
65	21
66	21
67	21
68	22
69	22
70	22
71	22
72	22
73	22

74	23
75	23
76	23
77	23
78	23
79	23
80	24
81	24
82	24
83	24
84	24
85	24
86	25
87	25
88	25
89	25
CONTACTS	26
Contact details	26
Telephones	26
Office hours	26
Address	26

SPECIFICATIONS

Overview

Beautifully kept, timeless Motoryacht, 4 staterooms, 4 Heads, updated electronics, newly installed Bow thruster and new custom stern thruster(\$40K Installed), The Salon is extremely roomy and also has an egress to the lower staterooms. Massive flybridge area, perfect for entertaining! She is currently in heated indoor storage in Maine. This is a wonderful opportunity to own a spectacular vessel!

Basic Information

Category: Motor Yacht

Model Year: 1988

Year Built: 1988

Country: United States

Dimensions

LOA: 65' 0" (19.81m)

Beam: 18' 2" (5.54m)

Min Draft: 5' 6" (1.68m)

MFG Length: 65' 0" (19.81m)

Speed, Capacities and Weight

Displacement: 99000 Pounds

Water Capacity: 175 Gallons

Holding Tank: 115 Gallons

Fuel Capacity: 600 Gallons

Accommodations

Total Cabins: 4

Total Heads: 3

Crew Heads: 1

Hull and Deck Information

Hull Material: Fiberglass

Engine Information

Engines: 2

Manufacturer: Detroit Diesel

Model: 12VA82 TA

Engine Type: Inboard

Fuel Type: Diesel

DETAILED INFORMATION

Overview

Accommodations This is a 4 stateroom down layout. The master is aft with king berth, new mattress in 2017, new flooring, and private head. The traditional port and starboard engine rooms separate the master from the VIP guest stateroom with queen berth and en-suite head. Continuing forward and up 4 stairs (full-size Laundry closet to the right of stairs), the second guest stateroom is on port with twin berths and the third head is across on starboard. And then forward and down three steps to the 4th stateroom or crews quarters. Here there are stacked berths to starboard with an upper full size berth and a single below. There is also an en-suite head with shower. Flatscreen TV's in Master and forward Cabin. The stern deck has a small line handling cockpit aft, huge salon with dining area, entertainment center, and a wet bar. Just forward of the salon is the galley with all new appliances and dinette. Continuing forward, you find the pilothouse with entrances to the forward stateroom and a staircase to the bridge. The bridge is huge with extended bimini. There is a marquipt davit and one cradle for toys. The bridge also features an entertainment area with large table. Each cabin has its own Cruisair AC/Heat system Master Stateroom

- Centerline King Size bed(Mattress 2017)
- Entertainment system w/TV
- Cedar lined closet
- Master head with Jacuzzi tub
- Courtesy lighting
- Recessed overhead lighting
- Cruisair AC/Heat System

Main Salon

- Entertainment center including wet bar and granite counter
- Ice maker
- 2 Barrell/Swivel Chairs
- Valances with back lighting
- Color coordinated blinds
- 8 Halogen recessed overhead lights
- Aft settee-ultrasuede
- Cabin sole renewed with dark walnut laminate
- Central Vacuum
- Bose sound system
- Raritan ice maker at wet bar
- Cruisair AC/Heat System
- Tall glass beverage cooler with glass door

Electrical

- Forward Generator 20KW ONAN
- Aft Generator 20KW ONAN
- OEM 120 AMPS
- 6- 8D AGM
- 2 -50 AMP 240 V Inputs
- 1 -50 AMP 120V Input
- Thermo magnetic CB

Deck EquipmentHUGE Flybridge with controls, extended Bimini, Entertainment center with grill.
Davit system on rear of flybridge

- 80# CQR w/chain & rode
- Danforth 60# w/chain & rode
- Galley Maid windlass capstan with bow and helm switches
- Marquipt 1200# Hydraulic crane
- Dock lines & Fenders
- Fresh water washdown
- ACR Searchlight
- Air Horns- '17 Compressor
- Solid windshield cover
- 2 Fiberglass deck boxes
- Imtra Sidepower Bowthruster installed 2017
- Custom MaxPower stern thruster installed 2019(\$40K)
- Main engines serviced with new hoses and filters 2018

Navigation

- Furuno 72 Mile Radar
- Furuno 48 Mile Radar
- Robertson AP-20DL Autopilot, lower and upper helm
- B & G Depth sounder
- B & G Speed/log
- Panish Controls
- SEA 222 Sideband
- B & G wind indicator
- Standard Horizon Matrix 2000 VHF
- TWO Garmin GPS Chartplotter 5212 One on Bridge on at lower helm.
- 2- Ritchie Compasses
- New 4-Camera system(Engine room and other area's)

Galley

- Kenmore Full size refrigerator 2016
- GE Profile stove 2016

- GE Microwave 2017
- GE Dishwasher 2017
- Disposal
- GE Trash compactor 2016
- Corian double sink
- Corian dinette

EnginesDetroit 12VA82TA's

- Triple Racor fuel filter
- Oil change system
- 75 AMP engine alternators
- custom workbench above each engine
- 2 bilge blowers
- Glendenning hydraulic trim tabs
- Arid bilge dri system 2017
- Electric fuel priming pumps with fuel transfer
- Decommissioned water maker

Exclusions

Owner's personal belongings.

Disclaimer

The Company offers the details of this vessel or yacht in good faith but cannot guarantee or warrant the accuracy of this information nor warrant the condition of the vessel. A buyer should instruct his representatives, agents, or his surveyors, to investigate such details as the buyer desires validated. This vessel or yacht is offered subject to prior sale, price change, or withdrawal without notice.

PHOTOS

2



3



4



5



6



7



8



9



10



11



12



13



14



15



16



17



18



19



20



21



22



23



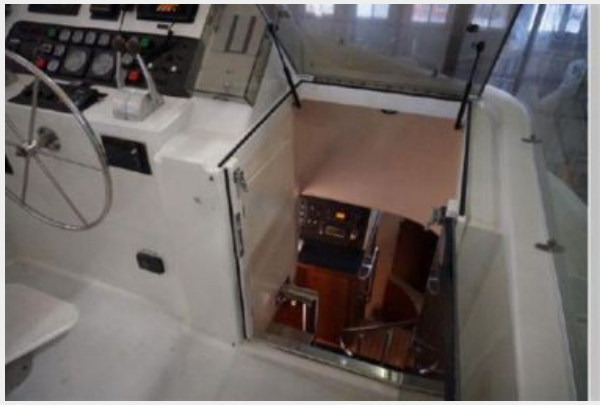
24



25



26



27



28



29



30



31



32



33



34



35



36



37



38



39



40



41



42



43



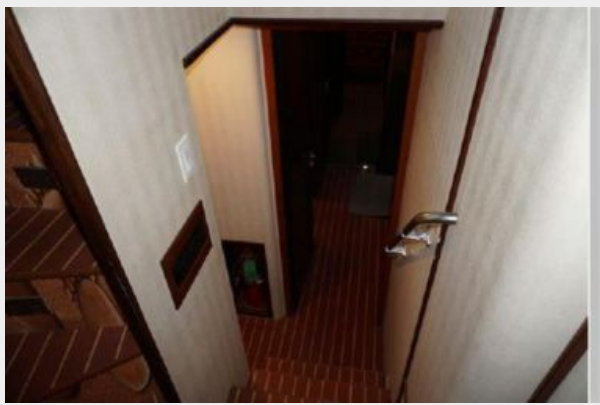
44



45



46



47



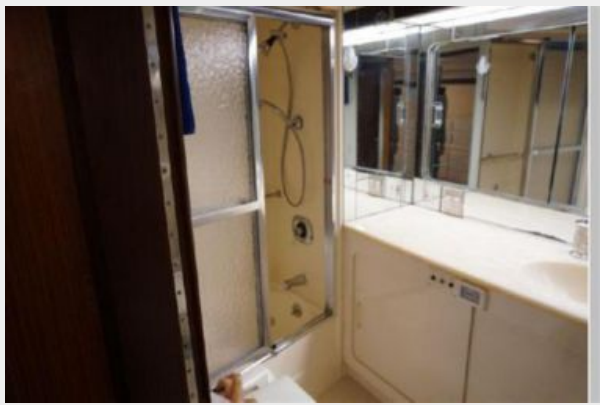
48



49



50



51



52



53



54



55



56



57



58



59



60



61



62



63



64



65



66



67



68



69



70



71



72



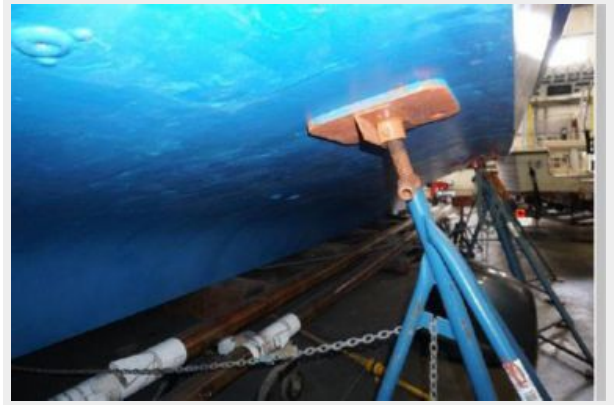
73



74



75



76



77



78



79



80



81



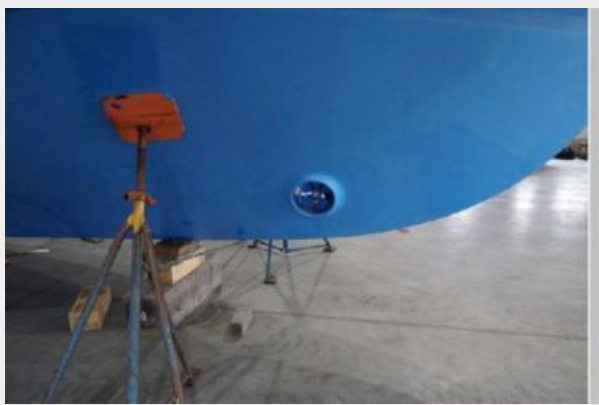
82



83



84



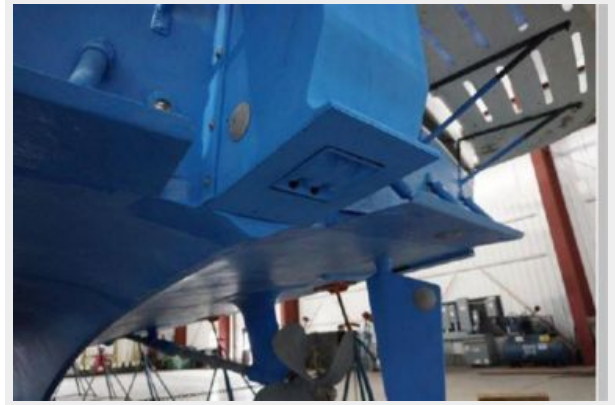
85



86



87



88



89



CONTACTS

Andrey Shestakov, leading yacht broker of the sales department of Shestakov Yacht Sales Inc. Shestakov Yacht Sales Inc., the official representative of the Miami/Fort Lauderdale FL headquarters.

Contact details

Email: andrey@shestakovyachtsales.com

Web: shestakovyachtsales.com/en/

Telephones

USA: +1(954)274-4435

Office hours

Monday – Saturday: **9:00 - 21:00** EDT

Sunday: **closed**

Address



Harbour Towne Marina, 850 NE 3rd St,
STE 213, Dania, FL 33004