

DIOMEDA — TAYANA



Builder: TAYANA

Year Built: 1989

Model: Cruising Sailboat

Price: PRICE ON APPLICATION

Location: United States

LOA: 42' 0" (12.80m)

Beam: 12' 6" (3.81m)

Min Draft: 5' 10" (1.78m)

Our experienced yacht broker, Andrey Shestakov, will help you choose and buy a yacht that best suits your needs **Diomeda — TAYANA** from our catalogue. Presently, at Shestakov Yacht Sales Inc., we have a wide variety of yachts available on our sale's list. We also work in close contact with all the big yacht manufacturers from all over the world.

If you would like to buy a yacht **Diomeda — TAYANA** or would like help answering any questions concerning purchasing, selling or chartering a yacht, please call **+1(954)274-4435**

TABLE OF CONTENTS

TABLE OF CONTENTS	2
SPECIFICATIONS	4
Overview	4
Basic Information	4
Dimensions	4
Speed, Capacities and Weight	4
Accommodations	4
Hull and Deck Information	5
Engine Information	5
DETAILED INFORMATION	6
Overview	6
Exclusions	7
Disclaimer	7
PHOTOS	9
2	9
3	9
4	9
5	9
6	9
7	9
8	10
9	10
10	10
11	10
12	10
13	10
14	11
15	11

16	11
17	11
18	11
19	11
20	12
21	12
22	12
23	12
24	12
25	12
26	13
27	13
28	13
29	13
30	13
31	13
32	14
33	14
34	14
CONTACTS	15
Contact details	15
Telephones	15
Office hours	15
Address	15

SPECIFICATIONS

Overview

Enjoy the benefits of extensive upgrades which include, new Awlgrip hull & topsides, electronics, 2 new AC units, and the list goes on... Proven offshore boat that is ready for a new owner as this current owner's plans have brought him inland. A list of the refit items will be available shortly. Boat was just launched in South Freeport, Maine.

Basic Information

Category: Cruising Sailboat

Sub Category: Center Cockpit

Model Year: 1989

Year Built: 1989

Country: United States

Dimensions

LOA: 42' 0" (12.80m)

Beam: 12' 6" (3.81m)

Min Draft: 5' 10" (1.78m)

MFG Length: 42' 0" (12.80m)

Speed, Capacities and Weight

Displacement: 27900 Pounds

Water Capacity: 100 Gallons

Holding Tank: 20 Gallons

Fuel Capacity: 134 Gallons

Accommodations

Total Cabins: 2

Total Berths: 4

Total Heads: 2

Hull and Deck Information

Hull Material: Fiberglass

Hull Designer: Tayana Ta-Yang
Shipbuilding

Engine Information

Engines: 1

Manufacturer: Yanmar

Model: JH2H-TE

Engine Type: Inboard

Fuel Type: Diesel

DETAILED INFORMATION

Overview

Accommodations

- Large owners aft cabin with separate head
- Starboard Galley
- Port Nav Station
- Large salon area with Port dinette
- Forward V-berth with separate head
- 6'4" headroom
- Lee cloths on all berths
- Custom portlight blinds
- Decorator Oil Lamp, clock, lamp and framed boat print included
- SONY stereo with speakers

Electrical

- Northern Light 4.5 KW, with Sound proofing- w/Racor filter
- True charge 40+ AMP with auto fan
- Lifeline 8D AGM Batteries (2)
- Odyssey start battery
- Tank Tender system

Galley

- Galley down
- Force 10-3 burner propane stove with oven
- Double SS Sinks
- SEAFROST REFRIG/FREEZER with added insulation
- Microwave
- Fresh water foot pump
- 2- 20lb Propane tanks
- H & C Pressure water
- 110 V Hot water heater with heater exchanger

Electronics

- Alpha Spectra autopilot with interface

- Icom 800SSB radio with AT120 tuner
- Autohelm ST50 depth sounder
- Standard horizon depth sounder
- ICOM 504 VHF Radio
- Standard loud hailer
- Ritchie binnacle compass
- Cetrek fluxgate compass
- Datamarine speed and distance log
- Toshiba TV/VCR
- Garmin GMI 10
- Track phone KVH
- Garmin Radar
- 2- Garmin 2480 Color Chartplotters

Sails and Rigging

- New 110% Dacron Yankee 2010
- New Norlon Gennaker 2012
- New full batten mainsail 2015
- New furling staysail 2015
- New Quick Cover
- All sails lightly used and in excellent condition.
- Spar completely re-rigged (running rigging) 2017

Other updates

- New Reefer / Freezer and Fwd / Aft AC units around 2010
- Bottom stripped, fared, sealed 2012
- Topsides AwlGripped 2012
- Deck repaired and refitted 2012 and AwlGripped
- New headliner, cabin lighting, repaint etc 2012
- New stainless steel fuel tanks (main, stbd and port) in 2009
- Satellite phone and internet 2010
- Dual GPS heads, cockpit and nav station.
- New AWI 2015

Exclusions

Owner's personal belongings.

Disclaimer

The Company offers the details of this vessel or yacht in good faith but cannot guarantee or warrant the accuracy of this information nor warrant the condition of the vessel. A buyer should

instruct his representatives, agents, or his surveyors, to investigate such details as the buyer desires validated. This vessel or yacht is offered subject to prior sale, price change, or withdrawal without notice.

PHOTOS

2



3



4



5



6



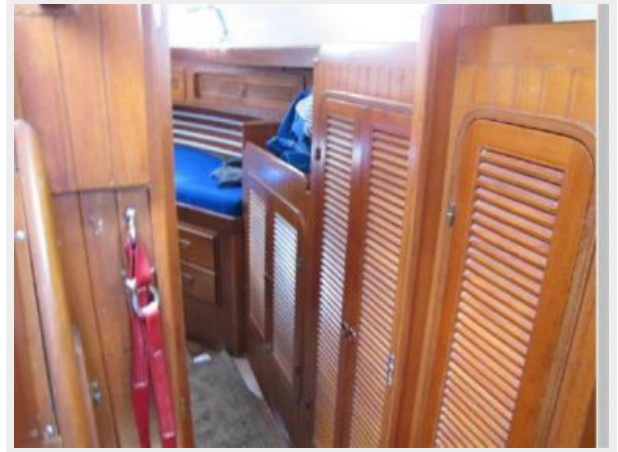
7



8



9



10



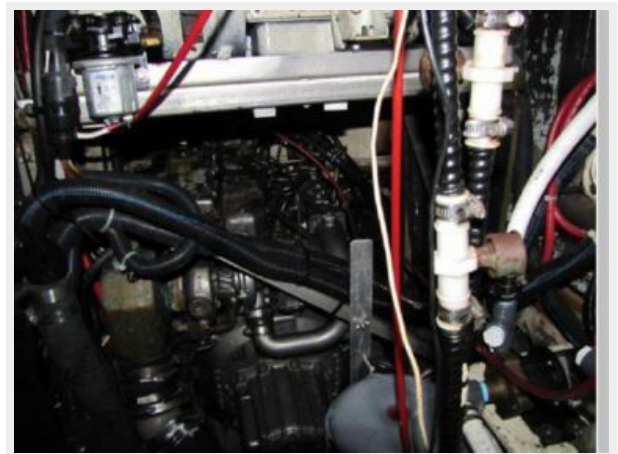
11



12



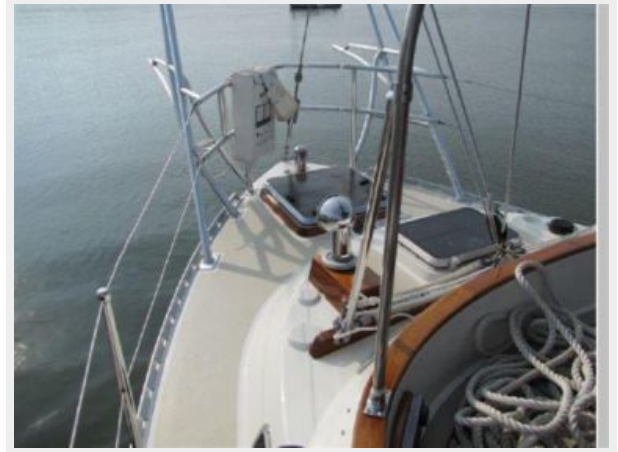
13



14



15



16



17



18



19



20



21



22



23



24



25



26



27



28



29



30



31



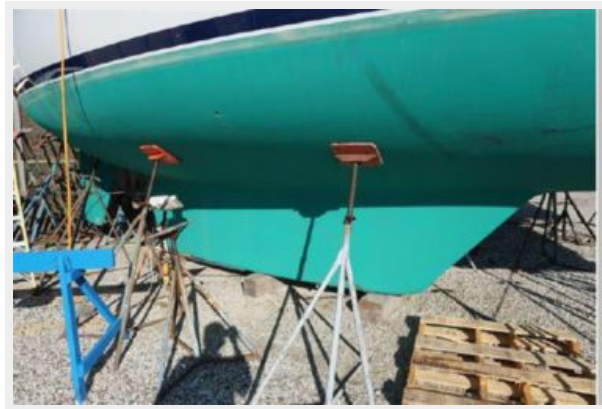
32



33



34



CONTACTS

Andrey Shestakov, leading yacht broker of the sales department of Shestakov Yacht Sales Inc. Shestakov Yacht Sales Inc., the official representative of the Miami/Fort Lauderdale FL headquarters.

Contact details

Email: andrey@shestakovyachtsales.com

Web: shestakovyachtsales.com/en/

Telephones

USA: +1(954)274-4435

Office hours

Monday – Saturday: **9:00 - 21:00** EDT

Sunday: **closed**

Address



Harbour Towne Marina, 850 NE 3rd St,
STE 213, Dania, FL 33004