

BAGHEERA — PALMER JOHNSON



Судостроитель: PALMER JOHNSON

Год постройки: 2005

Модель: Моторная яхта

Цена: **ЦЕНА ЯХТЫ ПО ЗАПРОСУ**

Местонахождение: Egypt

Длина общая: 119' 10" (36.50m)

Ширина: 24' 5" (7.44m)

Мин. осадка: 6' 6" (1.98m)

Крейс. скорость: 23 Kts. (26 MPH)

Макс. скорость: 28 Kts. (32 MPH)

Купить **BAGHEERA — PALMER JOHNSON** а также выбрать подходящую вам яхту из нашего каталога яхт вам поможет опытный яхтенный брокер Андрей Шестаков. На сегодняшний день компания **Shestakov Yacht Sales Inc.** имеет большое количество яхт в собственном списке продаж, а также тесно сотрудничает со всеми крупными яхтенными производителями по всему миру.

Для того чтобы купить яхту **BAGHEERA — PALMER JOHNSON** а также проконсультироваться по любому вопросу связанному с покупкой, продажей, чартером яхт позвоните по телефону **+7(918)465-66-44**.

ОГЛАВЛЕНИЕ

ОГЛАВЛЕНИЕ	2
ХАРАКТЕРИСТИКИ	4
Обзор	4
Основная информация	4
Размеры	4
Скорость, вместимость и масса	4
Размещение	5
Корпус и палуба	5
Информация о двигателе	5
ПОДРОБНОЕ ОПИСАНИЕ	6
MADE FOR FUN.	6
SPECIFICATION	6
Исключения	10
Отказ от ответственности	10
ФОТОГРАФИИ	12
yacht-bagheera-202008-running-01	12
yacht-bagheera-202008-running-02	12
yacht-bagheera-202008-running-03	12
yacht-bagheera-202008-exterior-1	12
yacht-bagheera-202008-exterior-2	12
yacht-bagheera-202008-exterior-3	12
yacht-bagheera-202008-exterior-4	13
yacht-bagheera-202008-exterior-5	13
yacht-bagheera-202008-exterior-6	13
yacht-bagheera-202008-exterior-7	13
yacht-bagheera-202008-exterior-8	13
yacht-bagheera-202008-interior-0	13
yacht-bagheera-202008-interior-1	13

yacht-bagheera-202008-interior-2	13
yacht-bagheera-202008-interior-3	14
yacht-bagheera-202008-interior-4	14
yacht-bagheera-202008-interior-5	14
yacht-bagheera-202008-interior-6	14
yacht-bagheera-202008-interior-7	14
yacht-bagheera-202008-interior-8	14
yacht-bagheera-202008-interior-9	14
yacht-bagheera-202008-interior-10	14
yacht-bagheera-202008-interior-11	15
yacht-bagheera-202008-interior-12	15
yacht-bagheera-202008-interior-13	15
yacht-bagheera-202008-interior-14	15
yacht-bagheera-202008-interior-15	15
yacht-bagheera-202008-interior-16	15
КОНТАКТЫ	16
Контактная информация	16
Телефоны	16
Время работы	16
Адрес	16

ХАРАКТЕРИСТИКИ

Обзор

The only Palmer Johnson 120 to feature a Jacuzzi infinity pool on the aft deck Extensive refit in 2020 including a full exterior repaint and completion of her Lloyd's Class 15-year survey Very low engine hours and excellently maintained technical spaces A sophisticated yet sporty yacht, with an impressive maximum speed of 28 knots and a cruising speed of approximately 23 knots Built to Lloyd's Register classification Multiple options for relaxation and fun in the sun with various areas for sunbathing and socializing Spacious accommodation for up to nine guests in four cabins, comprising a full beam master suite, two VIP suites and a twin cabin with a Pullman berth In commercial class and with all the key features of a fantastic charter yacht

Основная информация

Тип судна: Моторная яхта	Подкатегория: Semi-Displacement
Модельный год: 2005	Год постройки: 2005
Год обновления: 2020	Страна: Egypt

Размеры

Длина общая: 119' 10" (36.50m)	Ширина: 24' 5" (7.44m)
Мин. осадка: 6' 6" (1.98m)	

Скорость, вместимость и масса

Крейс. скорость: 23 Kts. (26 MPH)	Дальность на крейсерской скорости: 830
Макс. скорость: 28 Kts. (32 MPH)	Водоизмещение: 118000 Pounds
Чистый вес: 197 Pounds	Вместимость воды: 800 Gallons
Объем топливного бака: 6800 Gallons	

Размещение

Всего кают: 4

Спальные места: 9

Каюта капитана: Да

Спальных мест экипажа: 6

Корпус и палуба

Материал корпуса: Aluminum

Дизайнер экстерьера: Nuvolari & Lenard

Дизайнер интерьера: Nuvolari & Lenard

Информация о двигателе

Двигатели: 2

Производитель: MTU

Модель: 12V4000 DDEC M90

ПОДРОБНОЕ ОПИСАНИЕ

MADE FOR FUN.

Go anywhere and go there fast; BAGHEERA makes no compromises. An all-out rockstar and unapologetically noticeable, her top speed of 28 knots might stop you in your tracks, but it's her superiority among her peers that will keep you on the hook. The only Palmer Johnson 120 to have an infinity pool on the aft deck, BAGHEERA also has a Jacuzzi on the flybridge. By day, soak up the sun from any of the several relaxation spaces on deck; by night her outdoor cinema on the sundeck offers up the perfect way to unwind. Able to access the most secluded coves for a quiet lunch or race around the Med for a day of fun, BAGHEERA is the ultimate accessory for those who love to explore all the opportunities available in life.

SPECIFICATION

GENERAL

Year Built	2005 / 2020	
Builder	Palmer Johnson	
Type	Motoryacht – Planing Hull	
Classification	Lloyds Register 100A1 SSC Yacht Mono G6 LMC, MCA	
Flag	Belize	
Dimensions	LOA	36.5m / 119' 9"
	Beam	7.44m / 24' 4"
	Draft	1.98m / 6' 5"
Tonnage	Gross	197 Gross Tons
	Displacement	59 Tons
Construction	Hull	Aluminium
	Superstructure	GRP
Exterior Designer	Nuvolari & Lenard	
Interior Designer	Nuvolari & Lenard	
Refit	2020 – specifics available upon request	

MECHANICAL

EQUIPMENT

Main Engines 2 x MTU 2,750HP

Engine

Hours(August Port - 2,743 hrs - **Starboard** - 2,741 hrs

2020)

Gearbox	Twin Disc MG6984A, remote mounted gear sets, with trailing pumps and trolling valves.
Fuel	Diesel
Propulsion	Prop Shaft
Propellers	ZF NiBrAl, 5 blade, fixed pitch, Class S
Steering System	Electro-hydraulic with dual engine driven pumps
Stabilisers	Quantum QC1000, dual fin type stabilizer system
Bowthruster	Quantum QT60 bow thruster, 18" O.D. tunnel, proportional control
Generators	2 x 55 kW Kilopak

Generator

Hours(August Portside: 7224 hours - **Starboard:** 200 hours (rebuilt in 2018)

2020)

Electricity	Main switchboard, Power Management System, seamless transfer, circuit breakers, metering, ground fault indication, painted Awlgrip white 50Hz system with three phase and single phase voltagesCustom distribution panels, GFCI protection at outlets
Shore Power	60 KVA. 1 x Glendenning CM-8 cable reel installed aft, with 75 ft of 100 amp.
Main Engine Start	2 x 24V starting battery banks
Service	1 x 24V service battery bank
Generator Start	2 x 24V starting battery banks
Chargers	5 x Mastervolt constant voltage chargers
Emergency	1 x 24V (foredeck locker)
Hydraulics	Quantum QIS 60 integrated hydraulic system
Air Conditioning	Dometic Reverse Cycle system, 16 tons. (192,000 btu); Fresh make-up air system. 2 x Chiller - one new in 2017

CAPACITIES

Speed	Cruise – 23 knots Maximum – 28 knots
Range	830 NM

TANK CAPACITIES (APPROX.)

Fuel	6,800 US Gallons (25,740 Litres)
Water / Hot Water	800 US Gallons (3,028 Litres)

DECK EQUIPMENT

Anchor	2 x Maxwell VWC 6000 vertical windlasses,hydraulic, with capstan
Windlasses	2 x Maxwell chain stoppers
Anchors	2 x Ray, polished stainless steel anchors
Anchor Chains	350 feet of anchor chain per anchor
Boat Crane & Davits	Nautical Structures 1,000 kg capacity davit
Passerelle	Sanguinetti passerelle, 5.5m
Jacuzzi	Fully automated infinity spa

COMMUNICATIONS ENTERTAINMENT

n Panasonic KXTD-1232 Telephone System (system exists but decommissioned in 2017)
 n TV 8 Worldwide Coverage
 n Dual Universal Upgrade Kit (EU)
 n Sat phone KVH VSAT IPV7 mini
 n 2 x Icom GM1500, portable GMDSS radio with charger
 n 5 x Handheld VHF radios
 n 2 x Ray 240 VHF Handset and Speaker,
 n 1 x Ships PC Smartcom
 n 1 x EPSON XP 445

NAVIGATION ENTERTAINMENT

n Helm console: Flat screen displays
 n Monitors: 18 inch- operator selected
 n H6 Trackball System for Alarm & Lantic Computern
 n Furuno 2117 BB Radar, 6' Antennan
 n 1 x Leica AIS MX531 system with transpondern
 n RS 120 SDGPS Antennan
 n ST290 Wind Transducern
 n ST290 Depth Transducern
 n ST290 Speed Transducern
 n ST290 Wind Speed and Directionn
 n 2 x ST40 Bidirectional depth/speed indicators
 n DSM250 Black Box Sonar with Transducern
 n Gyrocompass: Navigate XMK1HSC systemn
 n Sperry NP-4000 Autopilot Systemn
 n Navigation PC with Timezero Chart Plotter x2

ENTERTAINMENT EQUIPMENT

n Lantic, on-demand entertainment system, selectable programming from dedicated CD/DVD servers or satellite television (decommissioned in 2016, serve still on board)
 n Theatre systems with plasma screen monitors for the salon and owner's stateroomn
 n WIFIn
 n 4g Internet 15nm from coast with range extendern
 n Exterior decks with music source selections and marine speakers
 n Entertainment systems with flat screen LCD monitors for the guest and crew areasn

SAT TV (Italia)n TV 8 Worldwide Coveragen Panasonic KXTD-1232 Telephone System (system exists but decommissioned in 2017)n Apple TV

OTHER MACHINERY

n Tecnicomar ST DC SY6000 - 1000L/Hn 2 x 30 gallon water heaters, electric heating elementsn MTU/DDEC engine controls and monitoringn Hamann Mini-L Marine Sanitation Devicen Quincy 3 hp air compressor (in the engine room, foredeck and boat deck)n Delta 'T' engine room ventilation systemn Alfa-Laval MIB303 with Fuel transfer pump, Oberdorfer 1100n Fuel Filters: Separ with gauge, water sensor, priming pumpn Sea chests with sea strainers on engine and generator seawater suppliesn Seawater piping of copper nickel [CuNi]

GALLEY & LAUNDRY EQUIPMENT

n Miele KM498, 4-burner induction type, stainless steel trim cooktopn Wolf 5036U, stainless steel trim convection ovenn Sub-Zero Model 700TR, stainless steel front panel refrigeratorn Miele G7855, or equal, stainless steel trim dishwashern Wolf W362210, stainless steel trim range hoodn Whirlpool White / Black, stainless steel trimn Microwave ovenn Sub-Zero Model 700TC, refrigerator/freezern Broan EX1050, black trash compactor

SECURITY & SAFETY EQUIPMENT

n 4 x Life ringsn Six-man life raft in white canister, hydrostatic releasen 2 x Eight-man life raft in white canister, hydrostatic releasen Flare kit with 6 rocket flaresn Adult and Child life jacketsn Portable fire extinguishersn NightWatch expandable alarm systemn Monitors/ bilge, fire and tank capacities n CCTV system HD cameras x8n FM200 Fire Fighting system in engine roomn Deluge fire system for the tender garage

TENDERS & WATERSPORTS EQUIPMENT

Tender	Jet tender Williams 445 - 120hp (2016)
Toys	1x paddle boardSnorkling gear (masks, pipes, flippers)2x water skis2x inflatable donut1x inflatable mattress1x Yamaha Superjet jet-ski

GUEST ACCOMMODATION AND CREW

Guest Accommodation	9 Guests in 4 cabins:1 x Master, 2 x VIP, 1 x Twin with Pullman berth
Crew	5/6 x Crew members including Captain's Cabin

2020 REFIT COMMENTS

BAGHEERA underwent a refit in 2020, during which she completed her Lloyd's Class 15-year survey and underwent a top-to-bottom hull and superstructure repaint. The decks were sanded and all exterior upholstery is new to match the new colour scheme. There was also work completed in the interior: the floor in the main salon was replaced, and new mattresses and pillows have been installed, as well as duvets, blankets, towels and bedsheets. There were also upgrades to the interior utensils and appliances, such as new glasses, serving bowls, platters, a coffee machine and an electric buffet

Refit in Malta

n Complete new paint, hull and superstructure n Deck has been sanded and complete new teak on the swimming platform n Outside cushions are completely new n New antifouling n Propellor survey n Rudder survey n Anchor + anchor chain survey n Prop speed anodes renewed n Lloyds survey all up to date n Belize flag commercial / Safety survey n Tanks have been opened and cleaned n Batteries have been inspected and some have been replaced n Floor in the main salon renewed n Service of the Williams tender

Maintenance work done by crew

n One chiller unit has been replaced, whole AC system is working perfectly n Shore converters, completely overhauled n Injectors from SB engine renewed due to factory schedule n High pressure pump SB engine renewed n All lightning checked and replaced where necessary n All coolers and fridges have been surveyed n Gangway completely surveyed

Upcoming work that will be done

n Salon chairs will be replaced n Carpets in salon and master cabin will be replaced n Some furniture items will be removed and replaced n Some bridge screens will be replaced

Исключения

При продаже яхты исключаются личные вещи владельца.

Отказ от ответственности

Компания предоставляет описание судна или яхты добросовестно, но не может

гарантировать точность этой информации, а также не ручается за техническое состояние. Покупатель должен проинструктировать своих агентов или оценщиков исследовать представленную информацию более подробно, по собственному желанию. Продажа судна или яхты, изменение цены или снятие с продажи будет происходить без предварительного уведомления.

ФОТОГРАФИИ

yacht-bagheera-202008-running-01



yacht-bagheera-202008-running-02



yacht-bagheera-202008-running-03



yacht-bagheera-202008-exterior-1



yacht-bagheera-202008-exterior-2



yacht-bagheera-202008-exterior-3



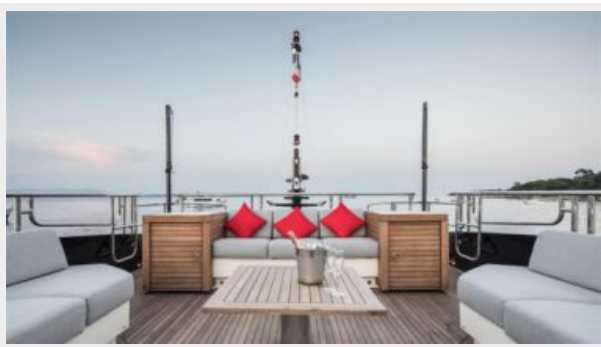
yacht-bagheera-202008-exterior-4



yacht-bagheera-202008-exterior-5



yacht-bagheera-202008-exterior-6



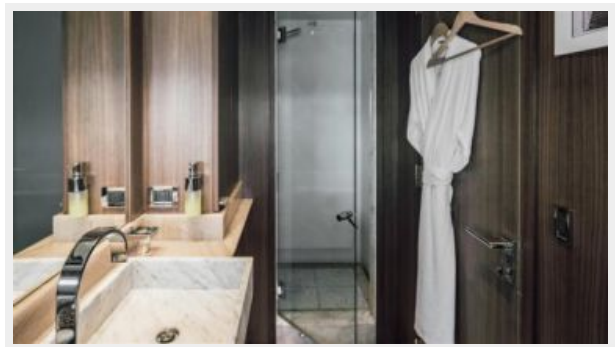
yacht-bagheera-202008-exterior-7



yacht-bagheera-202008-exterior-8



yacht-bagheera-202008-interior-0



yacht-bagheera-202008-interior-1



yacht-bagheera-202008-interior-2



yacht-bagheera-202008-interior-3



yacht-bagheera-202008-interior-4



yacht-bagheera-202008-interior-5



yacht-bagheera-202008-interior-6



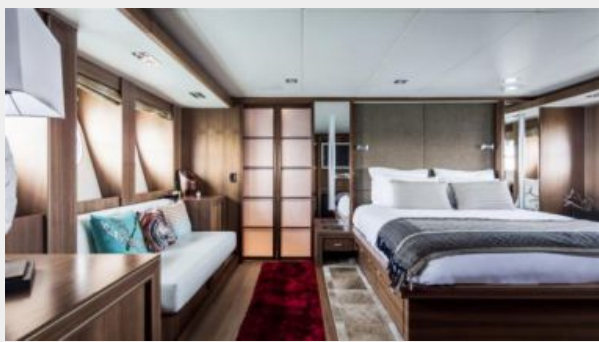
yacht-bagheera-202008-interior-7



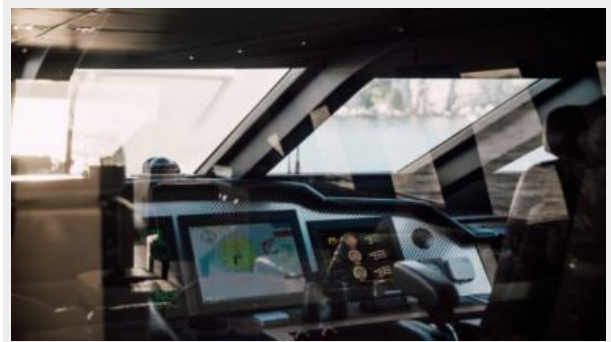
yacht-bagheera-202008-interior-8



yacht-bagheera-202008-interior-9



yacht-bagheera-202008-interior-10



yacht-bagheera-202008-interior-11



yacht-bagheera-202008-interior-12



yacht-bagheera-202008-interior-13



yacht-bagheera-202008-interior-14



yacht-bagheera-202008-interior-15



yacht-bagheera-202008-interior-16



КОНТАКТЫ

Андрей Шестаков (Andrey Shestakov) – ведущий яхтенный брокер отдела продаж яхт и судов компании Shestakov Yacht Sales Inc. Официальный представитель Shestakov Yacht Sales Inc. для русскоговорящих клиентов в центральном офисе компании в Майами/Форт Лодердейл/Флорида/США.

Контактная информация

Email: andrey@shestakovyachtsales.com

Web: shestakovyachtsales.com

Телефоны

Краснодарский край: **+7(918)465-66-44**

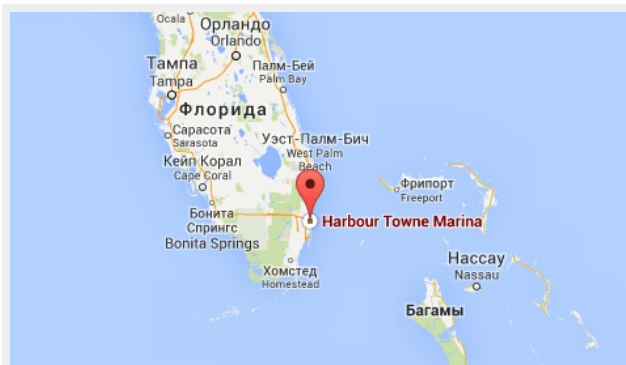
США, Майами, Флорида: **+1(954)274-4435**

Время работы

Понедельник – Суббота: **9:00 - 21:00**
EDT

Воскресенье: **Закрыто**

Адрес



Harbour Towne Marina, 850 NE 3rd St,
STE 213, Dania, FL 33004