

MARCATO — HIKE METAL PRODUCTS & SHIP BUILDING LTD



Builder:

HIKE METAL PRODUCTS & SHIP BUILDING LTD

Year Built: 2006

Model: Expedition Yacht

Price: PRICE ON APPLICATION

Location: United States

LOA: 141' 0" (42.98m)

Beam: 31' 9" (9.68m)

Min Draft: 7' 6" (2.29m)

Cruise Speed: 12.5 Kts. (14 MPH)

Max Speed: 14 Kts. (16 MPH)

Our experienced yacht broker, Andrey Shestakov, will help you choose and buy a yacht that best suits your needs **Marcato — HIKE METAL PRODUCTS & SHIP BUILDING LTD** from our catalogue. Presently, at Shestakov Yacht Sales Inc., we have a wide variety of yachts available on our sale's list. We also work in close contact with all the big yacht manufacturers from all over the world.

If you would like to buy a yacht **Marcato — HIKE METAL PRODUCTS & SHIP BUILDING LTD** or would like help answering any questions concerning purchasing, selling or chartering a yacht, please call **+1(954)274-4435**

TABLE OF CONTENTS

TABLE OF CONTENTS	2
SPECIFICATIONS	5
Overview	5
Basic Information	5
Dimensions	5
Speed, Capacities and Weight	5
Accommodations	6
Hull and Deck Information	6
Engine Information	6
DETAILED INFORMATION	7
Accommodations	7
Aft Deck and Cockpit	8
Pilothouse	8
Machinery	9
Range, Speed and Fuel Consumption	9
Generators and Electrical Systems	10
Tankage	10
Stabilizers and Systems	10
Safety and Fire Equipment	11
Summary of Additional Features	12
Deck Equipment	14
Communications and Nav	15
Galley and Laundry	16
Tenders and Toys	17
Entertainment	17
Exclusions	17
Re-fit and Upgrades	18
Exclusions	21

Disclaimer	21
PHOTOS	22
141' Expedition Yacht MARCATO running	22
141' Expedition Yacht MARCATO running2	22
141' Expedition Yacht MARCATO in ice	22
141' Expedition Yacht MARCATO w whale	22
141' Expedition Yacht MARCATO owner's deck	22
141' Expedition Yacht MARCATO sundeck	22
141' Expedition Yacht MARCATO in ice	23
PearlMarcato	23
Screen Shot 2020-09-01 at 12.45.34 PM	23
Screen Shot 2020-09-01 at 12.45.58 PM	23
Screen Shot 2020-09-01 at 12.46.17 PM	23
Screen Shot 2020-09-01 at 12.46.31 PM	23
141' Expedition Yacht MARCATO swim platform	24
141' Expedition Yacht MARCATO foredeck	24
141' Expedition Yacht MARCATO jacuzzi	24
141' Expedition Yacht MARCATO bridge	24
141' Expedition Yacht MARCATO master bath	24
141' Expedition Yacht MARCATO master1	24
141' Expedition Yacht MARCATO master2	25
141' Expedition Yacht MARCATO spa	25
141' Expedition Yacht MARCATO gym	25
141' Expedition Yacht MARCATO salon	25
141' Expedition Yacht MARCATO bar	25
141' Expedition Yacht MARCATO dining	25
141' Expedition Yacht MARCATO dining 2	26
141' Expedition Yacht MARCATO decor	26
141' Expedition Yacht MARCATO owner lounge	26

141' Expedition Yacht MARCATO decks	26
newGA2	26
newGA1	26
CONTACTS	27
Contact details	27
Telephones	27
Office hours	27
Address	27

SPECIFICATIONS

Overview

141' Expedition Yacht MARCATO is an ocean-proven passage maker built of steel and aluminum and designed for low maintenance, offering an impressive array of on board amenities & facilities, while offering luxury yacht accommodations along with an 8000 NM range. A multi-million dollar refit, including new interior and expansion of owner's deck plus new paint, was completed at Rybovich in 2018. Large capacity crane on foredeck allows for carrying large tender, motorcycles and submersible.

Basic Information

Category: Expedition Yacht

Model Year: 2006

Year Built: 2006

Refit Year: 2018

Refit Type: Interior and paint

Country: United States

Dimensions

LOA: 141' 0" (42.98m)

LWL: 130' 0" (39.62m)

Beam: 31' 9" (9.68m)

Min Draft: 7' 6" (2.29m)

Speed, Capacities and Weight

Cruise Speed: 12.5 Kts. (14 MPH)

Cruise Speed Range: 8000

Max Speed: 14 Kts. (16 MPH)

Gross Tonnage: 491 Pounds

Water Capacity: 6000 Gallons

Holding Tank: 2142 Gallons

Fuel Capacity: 20000 Gallons

Accommodations

Total Cabins: 5

Sleeps: 12

Total Heads: 7

Captain Cabin: True

Crew Sleeps: 8

Crew Heads: 4

Hull and Deck Information

Hull Material: Steel

Deck Material: Teak and Steel

Hull Configuration: Full Displacement

Hull Color: Light Grey

Engine Information

Engines: 2

Manufacturer: CAT

Model: 3508

Engine Type: Inboard

Fuel Type: Diesel

DETAILED INFORMATION

Accommodations

The Master Suite is located on Owners Deck along with a skybar lounge and private deck.

Luxuriously appointed and located one deck above the main deck the owner's deck has its own private aft deck with a stylish lounge/bar. Full his and hers hanging lockers and an expansive head and large shower.

4 x Guests Suites

The four guest suites on the lower deck include two spaciouly designed queen cabins and two oversized twin cabins with a double and extra long twin.

Dining Areas

Dining areas are numerous and provide excellent diversity ranging from elegant formal dining on the main deck forward of the main salon. A large dining table on the aft main deck provides an alfresco option. The breakfast nook in the galley proves to be very popular at anytime of day. There is a dining table on the owners deck. The flybridge deck above the pilothouse also features a large bar with 360 degree views.

Exercise Room/Gym

Between the guest and crew accommodation areas there is a large exercise room with overhead height to allow full extension of free weights while standing. This space double as a massage spa.

Crew facilities are in the bow.

The crew enjoys a spacious lounge and large galley located on main deck forward and separated from main deckhouse. This galley has its own appliances, a large settee and dining table, desk and TV. This area is accessed via the crew companionway stairs below or from a large watertight door aft from the well deck. This arrangement provides exceptional privacy for the owner and crew.

The Captains cabin located aft of the pilothouse. This spacious cabin and private head is close to the bridge and navigation desk.

Three crew cabins are forward on the lower deck and are separated from the guest cabins by a watertight door that allows interior access and passage to the guest companionway for service and passage in inclement weather. The crew cabins are large with full sized berths, large private heads and showers, and are very well appointed.

Storage space is maximized throughout the vessel with lids accessing compartments in the twin

staterooms, crew cabins and crew lounge. Convenient storage area under the forward stairs to crew lounge.

Aft Deck and Cockpit

Aft Deck

Longitudinally planked teak decking with margin boards and a 316L brushed stainless steel cap rail that shows that this is not a commercial vessel as one enters the aft deck from the cockpit. Two large cabinets with gloss white Microglass tops contain a U-Line refrigerator with external cooling fan, Franke bar sink with Grohe fixture. Fifteen dimable overhead lights and four stereo speakers are flush mounted in the overhead. There is also a security camera and cockpit flood lights. Two hydraulic warping windlasses and bits are located port and starboard with stainless steel fairleads in the bulwarks. An exquisitely crafted, large, teak dining table with inlays and high gloss finish is mounted on stanchions. A built-in lounge seat is facing forward and moveable chairs face aft to easily accommodate ten at the table for dining under the covered aft deck, which also features a full eisenglass enclosure.

Cockpit

Large teak cockpit with stainless capped bulwarks and transom door provide easy access to the full-beam teak swim platform that features a custom carbon-fiber swim ladder for easy access to tenders and floating docks. Towing bits and fairleads are 316L stainless steel. A removable sunshade provides shelter from sun or rain. Access to the lazarette via an oversized watertight door provides easy access to line storage, water sports equipment, ice machine, tender fueling station and engine room access. Fishing rod holders are mounted in the bulwark might as well troll dinner on a passage.

Pilothouse

Located on the 02 deck allowing superb visibility and excellent comfort at sea due to the house aft configuration. Pilothouse windows are raked forward and equipped with de-fogging vents and Wynn Marine window wipers with washers. Port and starboard pilothouse doors allow easy access to wing control stations and external stairway to upper and lower decks. There is a raised seating area aft of the helm area, a navigation desk and proper chart table with full size chart storage drawers. An excellent array of navigation and communication electronics features a 40" electronic chart table and complete redundancy is installed and ergonomically arranged for long passages.

Machinery

Main Engines 2 x 1000hp @ 1600 RPM Caterpillars 3508B

Engine Hours: 7,600

Gear Boxes

Reduction Gears: Reintjes free standing WAF542 with 3.52:1 reduction

Shafts & Propellers 2 X 5 blade 60 x 52 pitch

Shafts X 2 4.5 x 20 -Aquamet 22

Range, Speed and Fuel Consumption

Consumptions

12.5 knots (cruising), 42 gal/hr

10 knots (economical), 31 gal/hr

(Total consumption excludes 11.3 L/hr (3 gal/hr) for generators)

Range

2997 Nm at 14 knots

4182 Nm at 12.5 knots

7600 Nm at 10 knots

Generators and Electrical Systems

Generators

2 x 99kW KiloPak generators, 208V, three phase, keel cooled, with electric starts, resilient mounts, soundshields and hospital grade mufflers. These units are exceptionally quiet.

Port Gen: 3,573 hrs smoh. Starboard Gen: 8,774 hrs smoh

Electrical System

240/208 volt, 3-phase, 3-wire primary system with power supplied through transformers. ABS and IEEE 45 standards compliant

DC Emergency Power Backup. Electrical System for emergency lighting, communications, navigation, alarms, etc

Shore Power: 2 x 100 amp 208/ 240Batteries: 4 x Newmar battery chargers

Tankage

Tank Capacities (Approximate)

Fuel 20,000gals(75,700L)Water 6,000gals (22,710L)

Watermakers2 X WMSQ 2500 GPD Watermakers Inc

Lub Oil 567 gals (2182 L)Dirty Lub Oil238 gals (916 L)

Grey Water2142 gals (8246 L)

Black Water 2142 gals (8246 L)

Fresh Water Ballast10,000 gals (37,800 L)

Stabilizers and Systems

Quantum Hydraulic Systems powering windlasses, stabilizers and bowthruster

Steering System Jastram

Bow Thruster Quantum

Stabilizers Quantum Hydraulic System with 4 fins/Zero speed

Fuel Filters Dual Racors on main engines

Fuel Oil Separators Alpha Laval Fuel Centrifuge MAB 103

Fire/Bilge Pump MP Flomax Pumps x 2

Boilers Rheem Non-metallic - 2 each at 105 gal

Sewage Treatment Headhunter sewage treatment system

WC's Headhunter

Airconditioning - Custom Flow Marine AC plant installed 2018 with in line heating for cold weather

30 ton, 3 compressors, 360,000 BTU, HVAC chilled water system with frequency drives

Ventilation Delta T Air system.

2 x Fresh Air make up system replaced in 2018

2 x air compressors

Safety and Fire Equipment

Safety, Fire & Security

Safety Fully Compliant with ABS and MCA safety requirements Life saving appliances to include life rafts

Fire Protection

Cantenary lightning protection

Structural fire protection as required by class and MCA

Fire fighting system with fire mains on all decks

Fire detection system

Fixed fire extinguishing system in machinery space

Fixed fire extinguishing system in each generator sound enclosure

Security system with CCTV Cameras, door alarms, motion detectors, tender alarm

Summary of Additional Features

- ABS classed & MCA certified.
- Dry exhaust, keel cooled mains, gens, & hydraulic power pack.
- With dry exhaust there is no odor, no generator noise at anchor, and no black ring around toys trailed behind. Guests can use the water behind the vessel at anchor and not be succumbed by odor or soot. Also, the use of the aft deck is more pleasant &ndash no noise & no odor.
- Black water & gray water vents are located high in the exhaust funnels. Again, this prevents noxious odors from disturbing guests .
- Black water & gray water vents are located high in the exhaust funnels. Again, this prevents noxious odors from disturbing guests .

- Mains have high grade silencers.
- Mains are 3508b, rated for continuous operation at 1600 rpm producing 1000 hp. Mains have a high capacity oil sump. 2011)/10,000 hours including electrical controls, zero deductible.
- Main engines and generators have pre-heaters. Main engines have pre-lube pumps.
- Reintjes gears allow for trailing, if desired.
- 4 fin zero speed stabilization by Quantum Marine.
- Tank sight glasses used as opposed to having dip tube access throughout the accommodation spaces.
- Utility compressor in the lazarette.
- All discharge is via underwater sea bays quiet at anchor, no ring around hull, and no odor.
- Hull & main deck is in steel. Steel welds have the same strength as the plate. No doublers used, only insert plates where required for mounting of bits, boom, and other hardware .
- Freeing ports have drip edges so that rain water will exit through the deck drains, minimizing black streaks on the hull.
- Vessel designed/built for relative ease of maintenance. All equipment readily accessible.
- Displacement is over 1 million pounds.
- Less than 8 ft draft allowing access to anchorages typically off limits to other vessels. Thus, readily can cruise the Bahamas.
- Palfinger Knuckle boom (safe working load 13, 558 pounds/6,150 kg) is highly capable and maneuverable compared to booms/cranes typically found on yachts. Completely rebuilt in 2016.
- Interior is completely floating in order to minimize the sensation of any vibration.
- Additional items:
- Sound attenuation material used throughout construction of the vessel.

- Exercise room is stepped down in order to provide for practical head height for exercising & use of various equipment.
- Cap rail is 316L crushed pipe and extremely strong and minimal maintenance required.
- Rub rail is 316L sch 80 stainless steel pipe cut in half.
- Commercial hot tub.
- Numerous upgrades/change outs during ABS 10-year reclassification in 2016. This was for preventative maintenance purposes. For example: new a/c compressor/condenser units (3), a/c cooling water filter added, new a/c cooling water pumps (2), new shaft cooling pumps (2), new water maker supply pumps (2), new chilled water circulating pumps (2), a/c frequency drives replaced (2), engine room ventilation fan motors replaced (4), list continues.
- Extremely knowledgeable/committed captain has implemented standard operating procedures, training procedures, quality control procedures, detailed maintenance logs, detailed operational logs, inventory control, and documentation control. The vessel is maintained in a pristine, showboat condition, and ready to go at all times.
- All table pedestals are stainless steel pipe welded to the deck &ndash they will not move.
- All interior doors are 1 3/4in thick with heavy duty, high end hardware and elastomeric stops.
- All crown molding, base molding & millwork are custom cut, and butt joined, glued & doweled/wafered.
- All interior doors have high end magnetic door stops.
- Interior mahogany is all book matched.
- All drawer sliders are heavy duty full extension with closures.
- All drawer fronts have dovetail joints.
- Full length mirrors in all cabins.
- All heads have the circuitry to readily handle high amp draw hair dryers.
- Numerous cubbies throughout vessel for storage.
- Natural light throughout the interior.
- All tank tunnels, lazarette, and boson locker actively ventilated.
- Personal safes in all accommodation areas.
- Ergonomically designed companionways, hand rails & bulwarks and all stairs were mocked up before fabrication.
- Each galley has its own supplemental r/o system for drinking water.
- Crew lounge/ mess is fitted out with a fully operational galley; including large freezer, large refrigerator, cook top, oven, microwave, dishwasher, & trash compactor.
- Fresh air make up for all accommodation areas.
- Special air treatment/ventilation to prevent odors throughout vessel, tank tunnels, & lazarette.
- Main galley has its own air treatment system to prevent lingering odors.
- Main galley has a high capacity centrifugal filtering exhaust hood with 4 individual blowers, and a dedicated airtake to prevent odors. Tempurpedic mattresses throughout, including crew area. All mattresses 80 in length(including twins).
- All showers & heads, including crew showers & heads are oversized. Ceiling height throughout the vessel is much higher than that found on typical yachts.

- All heads have individually controlled & piped exhaust systems. This is critical for air balance, humidity control, and odor control. Individually piping prevents back drafts of noxious air from other locations.
- Additional items:
- Interior engine room access for use in inclement weather that has a sound lock and allows for safe entry during inclement weather. Voluminous storage throughout the vessel for dry goods, personal items, refrigerated goods, and spare parts.
- Numerous extra hold down sockets on the boat deck and focsle
- Wi-fi amplification.
- Security system tied in to CCTV, motion detection, and door contacts.
- High capacity ice maker in the lazarette.
- Bait/garbage freezer on the bridge deck.
- All decks designed with complete walk arounds eliminating need to climb down the side to handle lines or to clean.
- Functional cockpit for staging water entry operations, fishing, tender management, and most importantly, the safety afforded by an enclosed cockpit while accessing the engine room. Also, affords the added prevention of seawater entry through the access door while underway in a large following sea. This is all as compared to an open swim platform with no protection for crew or from water incursion.
- Rod holders (6) in the cockpit.
- Hot & cold water in the cockpit.
- Custom designed boarding stairs for easy & comfortable access from the water to the swim platform.
- Built in high capacity water softener with auto regeneration for shore side water.
- Diesel fueling station in the lazarette.
- Work benches in the lazarette and engine room.
- Writing & document storage desk in the engine room.
- Extra VHF radios throughout vessel in order to communicate with tenders.
- Ships monitoring system, fire panel, and VHF also located in owners cabin.
- Custom moldings, veneers, and louvres throughout.
- ABS classed & MCA certified.
- Generators have hospital grade silencers. Generators are double soft mounted to minimize vibration transmission.

Deck Equipment

Deck Equipment

1 x Furuno Furuno Navtex NX700 A B&GAIS and Furuno AIS 150

Dual anchoring system on the foredeck featuring hydraulic winches with chain cats and windlass drums, handwheel brakes and tensioners, chain stops, stainless steel spurling tubes and anchor chain wash. Three fiberglass dunnage boxes are on foredeck. Twelve 316L stainless steel flush

threaded deck sockets for removable padeyes on foredeck and twenty eight on well deck. Vapor proof deck lighting and flood lights on all exterior decks. Standard flush container receivers hold tender cradles, containers or other deck equipment and allow easy change over for different expeditions. Two hydraulic stern warping windlasses on aft deck. Bridge deck wing control stations port and starboard. Fire mains with hoses and nozzles located on each deck. Two life rafts on 01 level aft deck.

Anchor Windlass MUIR VRC 15000

Aft Warping Capstans MUIR VC 6000

Ground Tackle

poole anchors 590 KG and 165 M 26 mm stud link chain per side

Boat Crane & Davits Palfinger Marine 4800M hydraulic knuckle boom crane rigged with Spectra cable that can launch on either side of vessel and allows for reduced hook to boom cable lengths for safer handling. All tenders are rigged for single point lifting. Safe working load 13, 558 pounds (6,150 kg).

Side Boarding Ladders Marquipt Sea stairs

Swimming Platform - Large swim platform aft with large custom built dive ladderSearchlight

Removable storm covers for windows as per class requirements. Carbon Fiber

Communications and Nav

Communication Equipment GMDSS Equipped & Certified

SATCOM SEATEL Md 4006 V-Sat

MINI- M KVH Tracphone 252 VHF Radiotelephones ICOM IC M602

SSB RadiotelephoneFuruno FS 2570

Telephone ExchangePanasonic KX-TDA 100

Intercom System Built into phone system

Navigation Equipment

Magnetic Compass Ritchie

Gyro Compass Simrad RGC50

Automatic Pilot Simrad AP50

Log B&G Hydra 2000

Echo Sounder B&G Hydra 2000 and Northstar

Radar Furuno FAR 2117 Black box X -Band

Furuno FAR 2137S Black Box S-Band

Chart Plotter Garmin

GPS 2 x Northstar 6000i

1 x Furuno

NAVTEX Furuno Navtex NX700 AWind Instruments B&G

Other AIS and Furuno AIS 150

Galley and Laundry

Galley & Laundry Equipment

Main Galley

- Five burner Wolf range with induction hood four blower exhaust system and two warming bulbs
- TRUE Commercial freezer and refrigerator
- 2 x WOLF ovens
- 1 x WOLF microwave
- Marvel wine cooler
- WOLF warming drawer
- Whirlpool trash compacter
- Miele dishwasher

Laundry Room

- 2 x Kenmore (2017) Duet full size washers
- 2 x Kenmore (2017) Duet full size dryers
- Additional Kenmore (2017) Duet Washer and dryer in the Lazarette
- Rolling Iron

Ship's Safes Brinks Home security Model 5074

Barbecue Profire portable grill

Tenders and Toys

TENDERS

2008 32' SeaVee diesel inboard

2006 23' Nautica Inflatable tender (complete refit 2016)

WATER SPORTS 2 x 2016 Yamaha 3 seater wave runners

2 x Sea Kayaks

2 x Paddleboards

Entertainment

ENTERTAINMENT

- 2017 Elan system throughout with easy use control interfaces including hand held controller, iPads and wall attached devices
- New large LED TV's in all common areas (main saloon, sky lounge and outdoor TV on the sky deck)
- Movie server available to all guest rooms and common areas with over 5,000 thousand movie library
- AV systems supports access from guest mobile devices via Apple Airplay and Bluetooth so guests can enjoy their private movie and music collections
- DirectTV receivers available in all guest and common areas TV's providing service for both North America and Latin America
- Sonos Music Server available in all guest and common areas

Exclusions

- Books & personal effects
- select kitchen/serving items

- All artwork except piece behind bar, Mural and guest staterooms
- Fishing equipment
- Honda scooters

Re-fit and Upgrades

Marcato upgrades

Sundeck-

Redesigned the sundeck to include a large sunpad with forward facing views and two large Storage lockers below (2016)

Outdoor TV (2016)

Wet bar with fridge (2016)

Cork decking on sundeck and stairs (2016)

Freshly painted hot tub (2019)

Bridge-

New bamboo flooring (2018)

New Maretron vessel monitoring system (2019)

Custom Digital Chart table in bridge (2017)

Owners aft deck-

All new high end stainless outdoor furniture (2016)

Teak decking systems teak deck on owner aft deck (2016)

Sky lounge-

Complete redesign of the sky lounge nearly doubling the square footage (2016)

All new furniture by Ethan Allen and Jae Omar including a custom built dry bar (2016)

Owners stateroom/head-

Refinishing of all wood to a dark stain (2016)

New Bamboo floors with carpet inlay (2016)

New Stanton Impulse wool Carpet (2016)

All new Laurent Crystal Thassos Polished Marble counters (2016)

Master head redesigned with a large walk in shower lined with slab quartz stone (2016)

Custom mosaic Kinetic Thassos/Thassos marble tile floors (2016)

New Custom Sferra bedding and linens (2016 and ongoing)

Main Saloon-

All wood refinished in satin white and dark stain (2016)

All new quartz slab counters (2016)

Custom window valances by Sand Sea and Air Interiors (2016)

Custom Bar stools (2016)

Bamboo flooring with carpeted inlay (2016)

All new furniture (2016)

Added additional cabinets behind bar with custom acrylic glass storage (2016)

Dining room-

Ten person Crystal Thassos polished marble dining table w/ custom stainless steel base (2016)

New dining seating (2016)

Additional cabinets for dining settings with Crystal Thassos polished marble counters (2016)

12 light LED custom chrome Galaxy chandelier (2016)

New Ethan Allen dining seating (2016)

Main Aft Deck-

Full Eisenglass Enclosure (2018)

High end stainless steel outdoor seating (2016)

Guest cabins-

Bamboo flooring in guest hallway (2016)

New Fabrica Rivulet carpeting in all guest staterooms (2016)

New custom headboards with Pollack Meteor fabric (2016)

New Custom Sferra bedding and linens in all guest cabins(2016 and ongoing)

New custom roman shades by Hart-lines Custom Interior Workroom (2016)

New wall paper throughout guest areas (2016)

Whole Boat-

Complete Entertainment system upgrade including centralized AV rack, Apple Tv's, Direct TV Latin America and US, Movie server with over 5000 movies and new TV in all guest and crew areas (2016)

Complete removable headliner system allowing all panels to be easily removed for access to plumbing and wiring (2016)

New International Kingston Gray paint on hull and bulwarks (ongoing)

New International Matterhorn White paint on superstructure (ongoing)

Mechanical-

Complete in frame rebuild of port generator (2018)

Complete removal and rebuild of Palfinger Crane (2016)

New Flow Marine 30 ton AC plant (2018)

Large Engine room work bench (2018)

Fourteen new Flow Marine Air handlers (2017-2018)

Two new Atosa commercial style refrigerators in lazarette (2018)

One new Atosa commercial style freezer in lazarette (2018)

Completed ABS 10 year survey (2016)

Exclusions

Owner's personal belongings.

Disclaimer

The Company offers the details of this vessel or yacht in good faith but cannot guarantee or warrant the accuracy of this information nor warrant the condition of the vessel. A buyer should instruct his representatives, agents, or his surveyors, to investigate such details as the buyer desires validated. This vessel or yacht is offered subject to prior sale, price change, or withdrawal without notice.

PHOTOS

141' Expedition Yacht MARCATO running



141' Expedition Yacht MARCATO running2



141' Expedition Yacht MARCATO in ice



141' Expedition Yacht MARCATO w whale



141' Expedition Yacht MARCATO owner's deck



141' Expedition Yacht MARCATO sundeck



141' Expedition Yacht MARCATO in ice

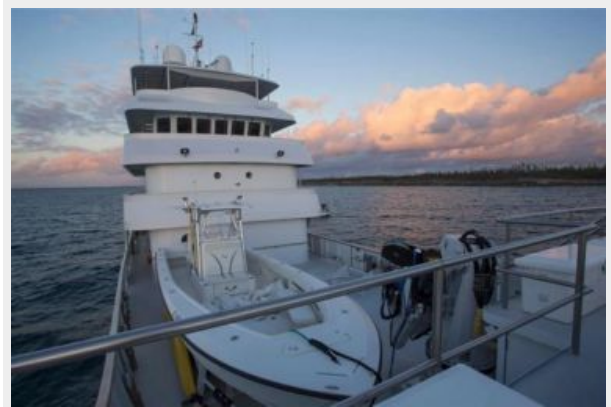


PearlMarcato



Screen Shot 2020-09-01 at 12.45.34 PM

Screen Shot 2020-09-01 at 12.45.58 PM



Screen Shot 2020-09-01 at 12.46.17 PM

Screen Shot 2020-09-01 at 12.46.31 PM



141' Expedition Yacht MARCATO swim platform



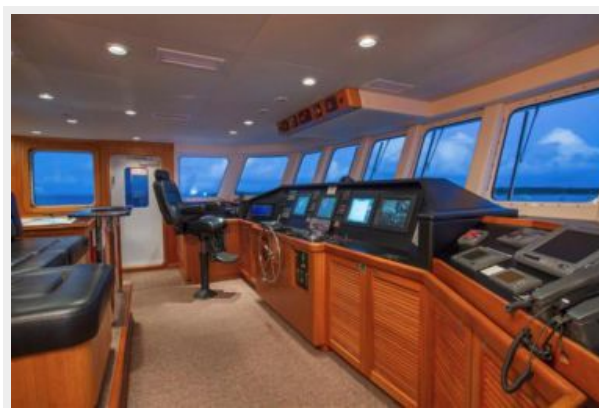
141' Expedition Yacht MARCATO foredeck



141' Expedition Yacht MARCATO jacuzzi



141' Expedition Yacht MARCATO bridge



141' Expedition Yacht MARCATO master1



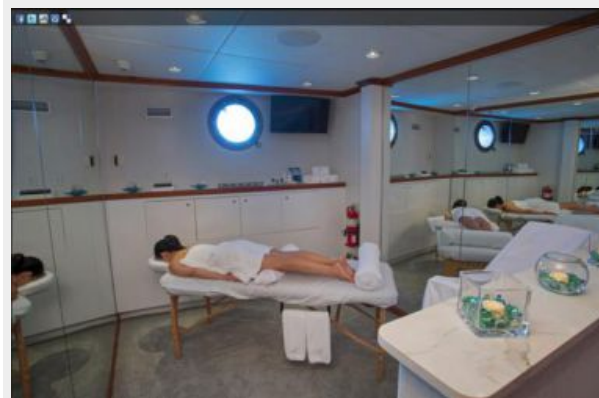
141' Expedition Yacht MARCATO master bath



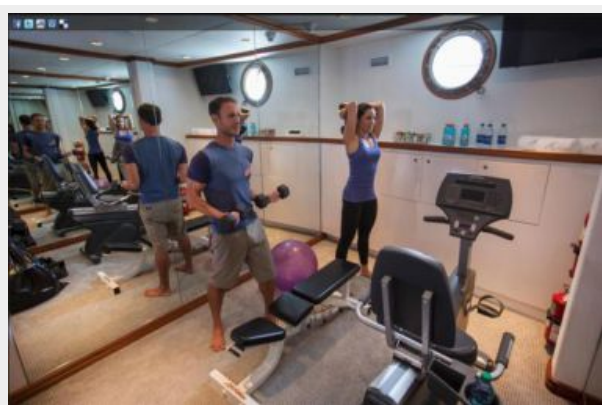
141' Expedition Yacht MARCATO master2



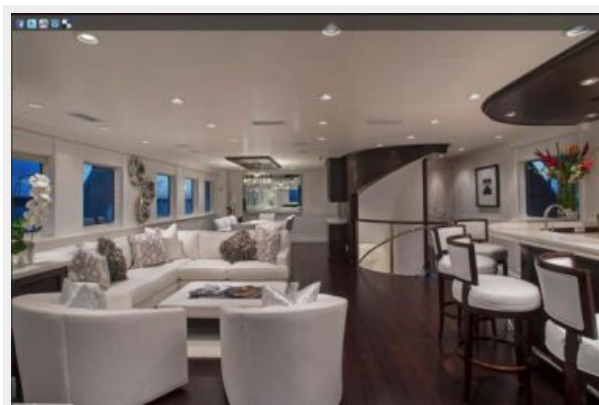
141' Expedition Yacht MARCATO spa



141' Expedition Yacht MARCATO gym



141' Expedition Yacht MARCATO salon



141' Expedition Yacht MARCATO bar



141' Expedition Yacht MARCATO dining



141' Expedition Yacht MARCATO dining 2



141' Expedition Yacht MARCATO decor



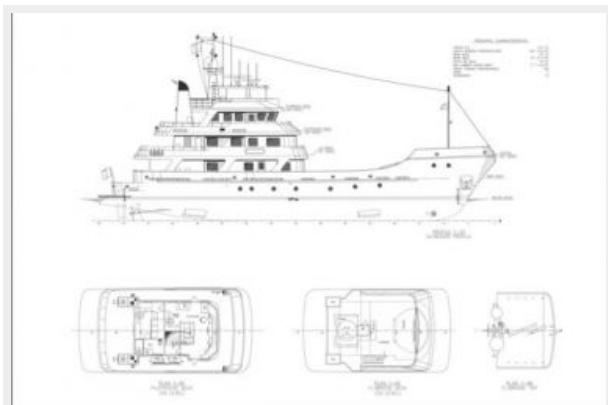
141' Expedition Yacht MARCATO decks



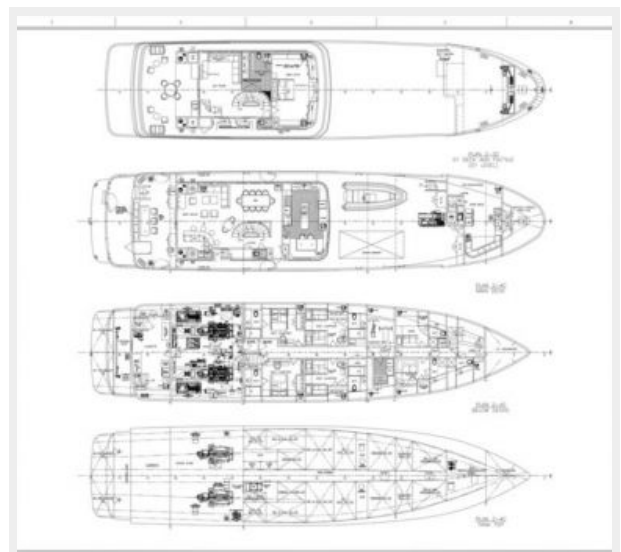
141' Expedition Yacht MARCATO owner lounge



newGA1



newGA2



CONTACTS

Andrey Shestakov, leading yacht broker of the sales department of Shestakov Yacht Sales Inc. Shestakov Yacht Sales Inc., the official representative of the Miami/Fort Lauderdale FL headquarters.

Contact details

Email: andrey@shestakovyachtsales.com

Web: shestakovyachtsales.com/en/

Telephones

USA: +1(954)274-4435

Office hours

Monday – Saturday: **9:00 - 21:00** EDT

Sunday: **closed**

Address



Harbour Towne Marina, 850 NE 3rd St,
STE 213, Dania, FL 33004