

## 1988 ISLAND PACKET 31 — ISLAND PACKET YACHTS



**Builder:** ISLAND PACKET YACHTS

**Year Built:** 1988

**Model:** Cruising Sailboat

**Price:** PRICE ON APPLICATION

**Location:** United States

**LOA:** 34' 0" (10.36m)

**Beam:** 11' 6" (3.51m)

**Min Draft:** 3' 0" (0.91m)

**Max Draft:** 7' 0" (2.13m)

Our experienced yacht broker, Andrey Shestakov, will help you choose and buy a yacht that best suits your needs 1988 Island Packet 31 — ISLAND PACKET YACHTS from our catalogue. Presently, at Shestakov Yacht Sales Inc., we have a wide variety of yachts available on our sale's list. We also work in close contact with all the big yacht manufacturers from all over the world.

If you would like to buy a yacht 1988 Island Packet 31 — ISLAND PACKET YACHTS or would like help answering any questions concerning purchasing, selling or chartering a yacht, please call +1(954)274-4435

# TABLE OF CONTENTS

|                              |    |
|------------------------------|----|
| TABLE OF CONTENTS            | 2  |
| SPECIFICATIONS               | 4  |
| Overview                     | 4  |
| Basic Information            | 4  |
| Dimensions                   | 4  |
| Speed, Capacities and Weight | 4  |
| Accommodations               | 4  |
| Hull and Deck Information    | 5  |
| Engine Information           | 5  |
| DETAILED INFORMATION         | 6  |
| Overview                     | 6  |
| Exclusions                   | 6  |
| Disclaimer                   | 7  |
| PHOTOS                       | 8  |
| 3                            | 8  |
| 2                            | 8  |
| 5                            | 8  |
| 4                            | 8  |
| 7                            | 9  |
| 6                            | 9  |
| 8                            | 9  |
| 9                            | 9  |
| 10                           | 9  |
| 11                           | 9  |
| 12                           | 10 |
| 13                           | 10 |
| 14                           | 10 |
| 15                           | 10 |

|                 |    |
|-----------------|----|
| 16              | 10 |
| 17              | 10 |
| 18              | 11 |
| 19              | 11 |
| 20              | 11 |
| 21              | 11 |
| 22              | 11 |
| 23              | 11 |
| 25              | 12 |
| 24              | 12 |
| 27              | 12 |
| 26              | 12 |
| 29              | 13 |
| 28              | 13 |
| CONTACTS        | 14 |
| Contact details | 14 |
| Telephones      | 14 |
| Office hours    | 14 |
| Address         | 14 |

# SPECIFICATIONS

## Overview

The much sought-after Island Packet! The Island Packet 31 has the cabin space of a much larger boat; with a 11'6" beam and water line length of almost 28', you will not find a more comfortable 31 footer. This boat is a centerboard model, sloop rig with a Yanmar diesel. Currently on the hard but getting ready for a spring launch. Updated B & G Electronics, she has a fantastic layout both in interior space and cockpit space.

## Basic Information

**Category:** Cruising Sailboat

**Model Year:** 1988

**Year Built:** 1988

**Country:** United States

## Dimensions

**LOA:** 34' 0" (10.36m)

**LOD:** 31' 0" (9.45m)

**Beam:** 11' 6" (3.51m)

**Min Draft:** 3' 0" (0.91m)

**Max Draft:** 7' 0" (2.13m)

**MFG Length:** 31' 0" (9.45m)

## Speed, Capacities and Weight

**Displacement:** 11500 Pounds

**Water Capacity:** 75 Gallons

**Holding Tank:** 15 Gallons

**Fuel Capacity:** 25 Gallons

## Accommodations

**Total Cabins:** 1

**Total Berths:** 4

**Total Heads:** 1

---

## Hull and Deck Information

---

**Hull Material:** Fiberglass

**Hull Configuration:** Centerboard

---

## Engine Information

---

**Engines:** 1

**Manufacturer:** Yanmar

**Model:** 3GM30

**Engine Type:** Inboard

**Fuel Type:** Diesel

---

# DETAILED INFORMATION

---

## Overview

---

### Accommodations

Roomy layout with a forward stateroom that closes off from the salon with a solid door. There is a V-berth, storage compartments and private entry to the head compartment. The head compartment is just aft and is complete with sink, vanity, marine toilet and bench for showering.

The salon is also very roomy with the large teak table mounted up against the forward bulkhead. There is an L-shaped settee on starboard and another settee opposite. Both settees have storage above and behind them.

The galley is U-shaped on the port side next to the companionway steps. Opposite is the navigation station with a fold down chart table and the electronics.

The quarterberth extends under the cockpit behind the navigation station.

The room in this boat is amazing!Sails & Rigging

- Battened Main
- Roller furling genoa
- Asym Spinnaker w/ATN dousing sock

### Electronics

- B & G 3G Radar
- Cetec-Benmar Autopilot
- B & G Plotter
- B & G Sailing instruments
- VHF

Additional InformationVela has been lovingly cared for and it shows, Also included is a Fairclough winter cover and frame.

---

## Exclusions

---

Owner's personal belongings.

---

## Disclaimer

---

The Company offers the details of this vessel or yacht in good faith but cannot guarantee or warrant the accuracy of this information nor warrant the condition of the vessel. A buyer should instruct his representatives, agents, or his surveyors, to investigate such details as the buyer desires validated. This vessel or yacht is offered subject to prior sale, price change, or withdrawal without notice.

# PHOTOS

2



3



4



5





6



7



8



9



10



11



12



13



14



15



16



17





18



19



20



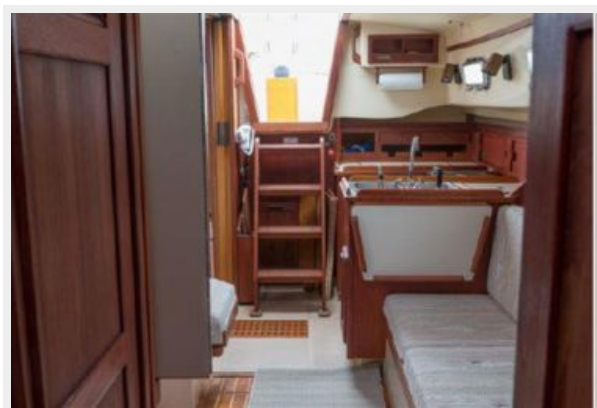
21



22



23



24



25



27



26



28



29



# CONTACTS

---

Andrey Shestakov, leading yacht broker of the sales department of Shestakov Yacht Sales Inc. Shestakov Yacht Sales Inc., the official representative of the Miami/Fort Lauderdale FL headquarters.

## Contact details

---

Email:  
**andrey@shestakovyachtsales.com**

Web: [shestakovyachtsales.com/en/](http://shestakovyachtsales.com/en/)

## Telephones

---

USA: **+1(954)274-4435**

## Office hours

---

Monday – Saturday: **9:00 - 21:00 EDT**

Sunday: **closed**

## Address

---



Harbour Towne Marina, 850 NE 3rd St,  
STE 213, Dania, FL 33004