

## EZ2NJOY — HATTERAS



**Builder:** HATTERAS

**Year Built:** 1995

**Model:** Motor Yacht

**Price:** PRICE ON APPLICATION

**Location:** United States

**LOA:** 42' 10" (13.06m)

**Beam:** 13' 7" (4.14m)

**Max Draft:** 4' 9" (1.45m)

**Cruise Speed:** 22 Kts. (25 MPH)

**Max Speed:** 27 Kts. (31 MPH)

Our experienced yacht broker, Andrey Shestakov, will help you choose and buy a yacht that best suits your needs **EZ2NJOY — HATTERAS** from our catalogue. Presently, at Shestakov Yacht Sales Inc., we have a wide variety of yachts available on our sale's list. We also work in close contact with all the big yacht manufacturers from all over the world.

If you would like to buy a yacht **EZ2NJOY — HATTERAS** or would like help answering any questions concerning purchasing, selling or chartering a yacht, please call **+1(954)274-4435**

# TABLE OF CONTENTS

TABLE OF CONTENTS	2
SPECIFICATIONS	5
Overview	5
Basic Information	5
Dimensions	5
Speed, Capacities and Weight	6
Accommodations	6
Hull and Deck Information	6
Engine Information	6
DETAILED INFORMATION	7
Dimensions	7
Engines	7
Tanks	7
Vessel Walkthrough	7
Master Stateroom	7
Guest Stateroom	7
Main Salon	8
Galley	8
Deck	8
Aft Deck	8
Exclusions	8
Disclaimer	8
Exclusions	9
Disclaimer	9
PHOTOS	10
29	10
36	10
41	10

---

37	10
40	11
39	11
33	11
45	11
43	11
44	11
46	12
38	12
35	12
32	12
50	12
48	12
47	13
28	13
27	13
26	13
25	14
24	14
23	14
22	14
21	14
20	14
19	15
18	15
17	15
16	15
15	16
14	16

---

---

12	16
13	16
10	17
11	17
9	17
8	17
7	18
6	18
5	18
4	18
2	19
3	19
1	19
CONTACTS	20
Contact details	20
Telephones	20
Office hours	20
Address	20

---

# SPECIFICATIONS

---

## Overview

---

### NEW TO THE MARKET

**"STORED UNDERCOVER IN FRESHWATER FOR THE LAST 13 YEARS"**

**More details will be added soon.**

**1460 Original Hours on Caterpillar 3126's**

**Many recent upgrades including wood floors, new cabinets and countertops in galley, new countertops, and sinks in heads, updated Garmin Electronics, etc....**

### **ELECTRONICS/APPLIANCES/AUDIO-VIDEO/ELECTRICAL SYSTEM/AIR CONDITIONING/ BATTERIES**

Updated Pictures Will Be Posted Soon!!! Pictures show before refit and after.

This is the cleanest 42' Hatteras on the market. "EZ2NJOY" is in immaculate condition and the pride of ownership is obvious throughout the entire yacht. New in 2005----Salon a/c, Canvas, and Eisenglass, upholstery, bottom paint, etc.. This is the perfect boat to cruise the east coast, The Bahamas, and the Florida Keys.

---

## Basic Information

---

**Category:** Motor Yacht

**Sub Category:** Aft Cabin

**Model Year:** 1995

**Year Built:** 1995

**Country:** United States

---

## Dimensions

---

**LOA:** 42' 10" (13.06m)

**Beam:** 13' 7" (4.14m)

**Max Draft:** 4' 9" (1.45m)

**Clearance:** 15' 9" (4.80m)

---

## Speed, Capacities and Weight

---

**Cruise Speed:** 22 Kts. (25 MPH)

**Max Speed:** 27 Kts. (31 MPH)

**Displacement:** 41000 Pounds

**Water Capacity:** 115 Gallons

**Fuel Capacity:** 375 Gallons

---

## Accommodations

---

**Total Cabins:** 2

**Total Heads:** 2

---

## Hull and Deck Information

---

**Hull Material:** Fiberglass

---

## Engine Information

---

**Engines:** 2

**Manufacturer:** Caterpillar

**Model:** 3126

**Fuel Type:** Diesel

---

## DETAILED INFORMATION

---

### Dimensions

---

Displacement: 41,000 lbs

### Engines

---

Total Power: 420

Cruising Speed: 22

Max Speed: 27

### Tanks

---

Fuel: 375 Fresh Water: 115

### Vessel Walkthrough

---

Upon boarding "EZ2NJOY" from either the cockpit or the side decks, you come to the large aft deck with the salon entry to the starboard side and the steps to the helm on the port side. The steps down to the cockpit from the aft deck are on the starboard side. When you enter the salon immediately to your left are the stairs that lead to the master stateroom which has a walkaround queen size bed, two cedar hanging lockers, plenty of storage, and private full head. Going back up to the salon you will find an updated interior with new soft goods, a beautiful satin-finished oak panelling, large L-shaped seating and a dinette. Forward and three steps down you will find the galley. Forward of the galley, you find the guest stateroom with over and under berths, hanging locker, ample storage, and a private full head.

The side decks of the "EZ2NJOY" are quite wide, and the full-width aft deck is large enough for an assortment of deck furnishings. The cockpit offers a much easier way for boarding and entertaining aboard "EZ2NJOY".

### Master Stateroom

---

The master stateroom is aft with a walkaround queen berth, spacious cedar-lined hanging lockers, a Mitsubishi color television, storage drawers, and a private full-size head and shower.

### Guest Stateroom

---

The guest stateroom is forward with over and under berths, hanging locker, storage drawers and a full-size head and shower.

---

## Main Salon

---

The salon is midship with an L-shaped dinette with a custom teak table to starboard. There is also an L-shaped settee with storage on the port side.

---

## Galley

---

The galley is down and forward of the salon.

- \*Two burner electric cooktop• \*GE Refrigerator with freezer• \*Sharp Carousel II microwave & convection oven• \*Stainless steel sink• \*White Formica countertops• \*Clothes Washer and Dryer• \*Water Heater• \*Dockside water pressure system• \*Electrical panel in a recessed cabinet• \*Large storage cabinets and drawers

---

## Deck

---

- \*Bimini top with 3-sided enclosure• \*Swim Platform• \*Flybridge Carpeting (NEW 2003)• \*Fender racks on the bow• \*Radar Arch• \*Transom walkthrough door• \*Telephone, CATV, and Dockside \*Water Connections• \*Boarding steps port and starboard• \*Pompanette flybridge helm chair• \*Hatteras standard black stripe removed for a cleaner look• \*The window frames have been repainted from black to white in 2003• \*New bottom paint in 2005

---

## Aft Deck

---

- \*Teak Deck and steps (NEW 2003)• \*Molded fiberglass cabinet with a sink, freshwater, and bottle racks• Full aft deck Eisenglass enclosure (NEW 2005)• \*Deck carpeting and aft deck furniture• \*Fiberglass hardtop• \*Access to the cockpit with a molded fiberglass swim platform and walk-thru door• \*Access to the flybridge via the port side• \*Access to the salon via the starboard side• \*Access to the bow via the port or starboard large side decks.

---

## Exclusions

---

ALL OWNERS PERSONAL BELONGINGS

---

## Disclaimer

---

The Company offers the details of this vessel in good faith but cannot guarantee or warrant the



---

accuracy of this information nor warrant the condition of the vessel. A buyer should instruct his agents, or his surveyors, to investigate such details as the buyer desires validated. This vessel is offered subject to prior sale, price change, or withdrawal without notice.

## **Exclusions**

---

Owner's personal belongings.

## **Disclaimer**

---

The Company offers the details of this vessel or yacht in good faith but cannot guarantee or warrant the accuracy of this information nor warrant the condition of the vessel. A buyer should instruct his representatives, agents, or his surveyors, to investigate such details as the buyer desires validated. This vessel or yacht is offered subject to prior sale, price change, or withdrawal without notice.

# PHOTOS

29



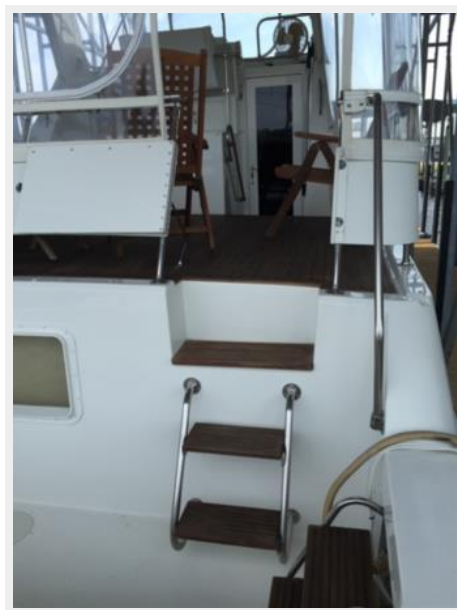
36



37



41



40



39



33



45



43



44



46



38



35



32



50



48



47



28



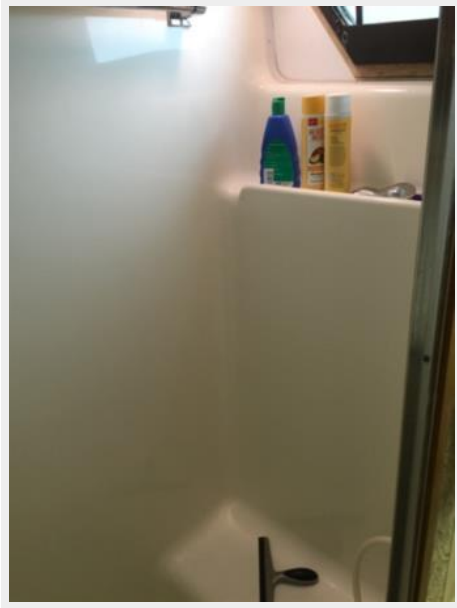
27



26



25



24



23



22



21



20



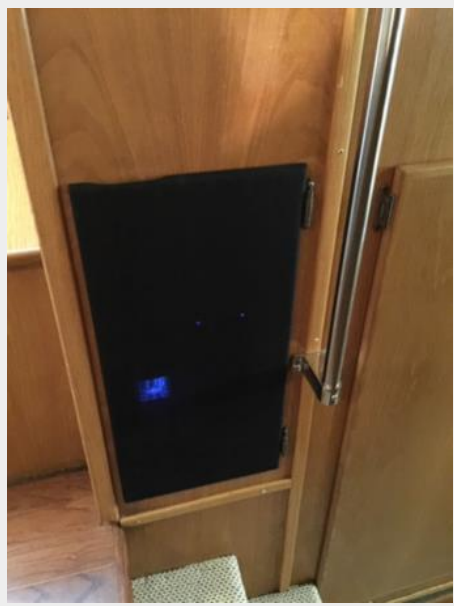
19



18



17



16



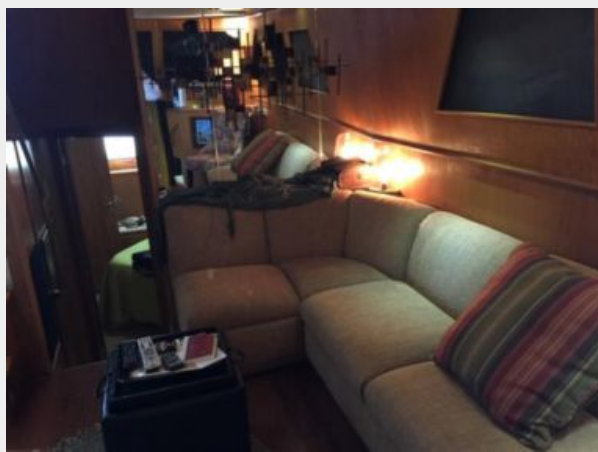
15



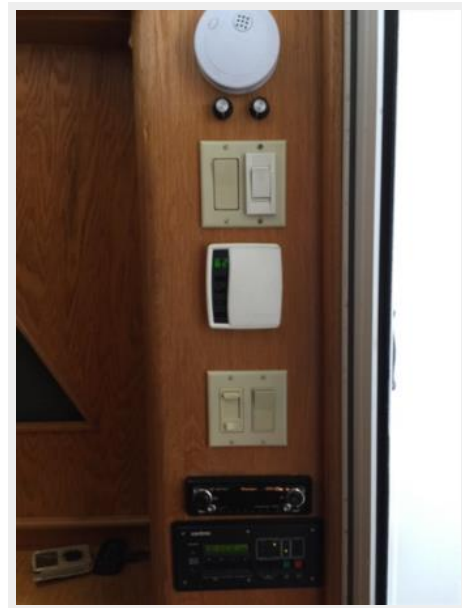
14



13



12





11



10



9



8



7



6



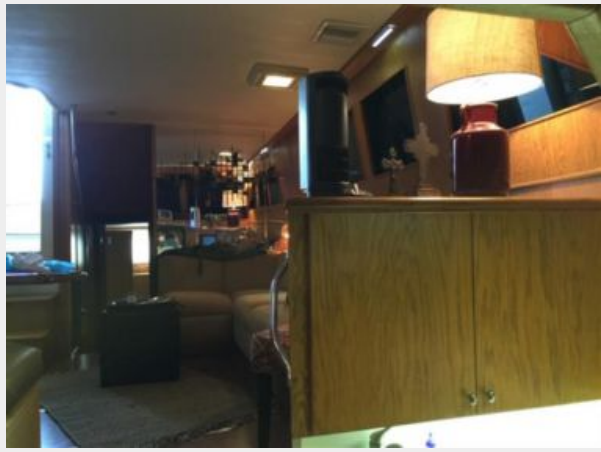
5



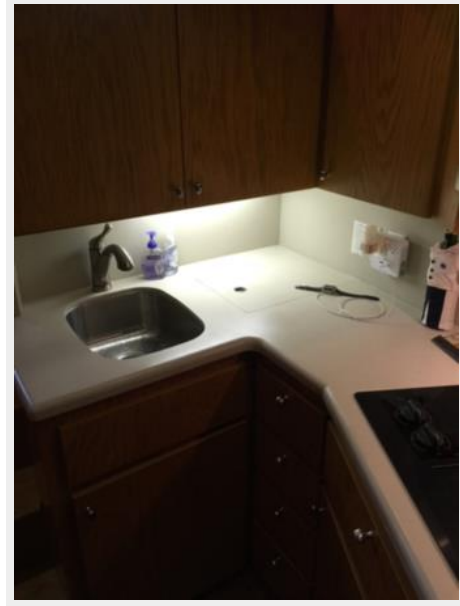
4



3



2



1



# CONTACTS

---

Andrey Shestakov, leading yacht broker of the sales department of Shestakov Yacht Sales Inc. Shestakov Yacht Sales Inc., the official representative of the Miami/Fort Lauderdale FL headquarters.

## Contact details

---

Email: [andrey@shestakovyachtsales.com](mailto:andrey@shestakovyachtsales.com)

Web: [shestakovyachtsales.com/en/](http://shestakovyachtsales.com/en/)

## Telephones

---

USA: +1(954)274-4435

## Office hours

---

Monday – Saturday: **9:00 - 21:00** EDT

Sunday: **closed**

## Address

---



Harbour Towne Marina, 850 NE 3rd St,  
STE 213, Dania, FL 33004