

## NEVER SETTLE — SEA RAY



**Судостроитель:** SEA RAY

**Год постройки:** 2014

**Модель:** Моторная яхта

**Цена:** ЦЕНА ЯХТЫ ПО ЗАПРОСУ

**Местонахождение:** United States

**Длина общая:** 51' 0" (15.54m)

**Ширина:** 15' 4" (4.67m)

**Макс. осадка:** 4' 5" (1.35m)

Купить **Never Settle — SEA RAY** а также выбрать подходящую вам яхту из нашего каталога яхт вам поможет опытный яхтенный брокер Андрей Шестаков. На сегодняшний день компания **Shestakov Yacht Sales Inc.** имеет большое количество яхт в собственном списке продаж, а также тесно сотрудничает со всеми крупными яхтенными производителями по всему миру.

Для того чтобы купить яхту **Never Settle — SEA RAY** а также проконсультироваться по любому вопросу связанному с покупкой, продажей, чартером яхт позвоните по телефону **+7(918)465-66-44**.

# ОГЛАВЛЕНИЕ

ОГЛАВЛЕНИЕ	2
ХАРАКТЕРИСТИКИ	3
Обзор	3
Основная информация	3
Размеры	3
Скорость, вместимость и масса	3
Размещение	4
Корпус и палуба	4
Информация о двигателе	4
ПОДРОБНОЕ ОПИСАНИЕ	5
Detailed Description and Features	5
Исключения	11
Отказ от ответственности	11
ФОТОГРАФИИ	12
КОНТАКТЫ	23
Контактная информация	23
Телефоны	23
Время работы	23
Адрес	23

# ХАРАКТЕРИСТИКИ

## Обзор

### Prominent Features:

1. Freshwater Yacht
2. Low hours (650 Hours)
3. Retractable HardTop
4. Highly specified build (\$1.792mm MSRP). The original hull specific construction/build record is available upon request.
5. Bow/Stern thrusters, Zeus Propulsion, FLIR night vision camera, EchoPilot forward-facing sonar, and preferred master suite configuration with additional storage.

## Основная информация

**Тип судна:** Моторная яхта

**Подкатегория:** Flybridge

**Модельный год:** 2014

**Год постройки:** 2014

**Страна:** United States

**Открытая палуба мостика:** Да

## Размеры

**Длина общая:** 51' 0" (15.54m)

**Ширина:** 15' 4" (4.67m)

**Макс. осадка:** 4' 5" (1.35m)

## Скорость, вместимость и масса

**Водоизмещение:** 46800 Pounds

**Вместимость воды:** 140 Gallons

**Вместимость сточного бака:** 68 Gallons

**Объем топливного бака:** 500 Gallons

---

## Размещение

---

Всего кают: 3

Всего ком. состава: 2

---

## Корпус и палуба

---

Материал корпуса: Fiberglass

---

## Информация о двигателе

---

Двигатели: 2

Производитель: Cummins

Модель: QSC 600

Тип двигателя: Inboard

Тип топлива: Diesel

---

# ПОДРОБНОЕ ОПИСАНИЕ

---

## Detailed Description and Features

---

### Hull/Deck Features

- Anti-Fouling Paint
- Custom Sea Ray Thru-Bolted Stainless Steel Cleats
- Arctic White Gel Coat
- 316 Stainless Steel Handrails
- Smoked Acrylic Hull Windows
- Stainless Steel Port Lights
- PVC Rub Rail w/Stainless Steel Insert
- Transom Storage Wall (For Lines & Gear)
- Hydraulic Swim Platform (Extended)
- Stainless Steel Thru-Hull Fittings
- FlyBridge Venturi Windscreen
- Tempered/Smoked Curved Glass Windshield

### Mooring System

- Stainless Steel Anchor & Anchor Chute
- Windlass w/ All Chain & Foot Switch Controls

### Cockpit Features

- Beverage Holders
- Door, Cabin Entry - 3-Pane/Multi Opening
- Door, Transom
- Floor Liner, Fiberglass
- Handrails, 316 Stainless Steel
- Lazarette with Dedicated Line & Fender Stowage
- Lighting, LED - White
- Outlets, 120V GFI Protected
- Seating, Aft Bench
- Steps, Boarding
- Steps, Exterior Bridge Access w/Stainless-Steel Handrail & Storage Below

### Bridge Features

- Beverage Holders
- Console Glove Box
- Handrails: 316 Stainless Steel
- Hatch, Sliding Bridge Access
- Lighting, Indirect LED
- Outlet, 120V GFI Protected
- Outlet, 12V Accessory
- Radar Arch
- Refrigerator, 120V
- Seating, Convertible w/Storage Below
- Seating, Helm (2)
- Ship's Bell
- Sun pad
- Table, Fiberglass - Aft

### Certifications

- Meets Applicable USCG & ABYC Standards
- NMMA Yacht Certification

### Canvas (Sunbrella)

- Bridge Seats & Console Covers
- Canvas Colors - Black
- Cockpit Seat Covers

### Electronics

- Electronics Circuit, 12V/50 Amp
- VHF Radio

### Upper Helm

- Alarms, High Water - Bilge & Cabin
- Battery Parallel Start System - Engines
- Compass
- Dash, Gel Coated
- Horn, Air - 12V
- Instrument Panel

- SmartCraft Digital Throttle & Shift (DTS)
- SmartCraft Vessel View Display:
- SmartCraft® Diagnostics:
- Steering, Power Assisted Hydraulic w/Tilt Wheel
- Switch Panel, Backlit
- Switches, Illuminated Weatherproof Rockers & Electronic Dimmer Control

## Lower Helm

- Alarms, High Water - Bilge & Cabin
- Battery Parallel Start System - Engines
- Compass
- Dash, Gel Coated
- Defroster
- Horn, Air - 12V
- Instrument Panel - High Gloss
- SmartCraft Digital Throttle & Shift (DTS)
- SmartCraft Vessel View Display:
- SmartCraft® Diagnostics:
- Steering, Power Assisted Hydraulic w/Tilt Wheel
- Switch Panel, Backlit - High Gloss
- Switches, Illuminated Weatherproof Rockers & Electronic Dimmer Control
- Windshield Wipers w/Wiper Controls

## Salon

- Control Station - Lower Helm w/Single Stidd Helm Seat
- Entertainment Center
- Ample Storage
- Folding Wood Table

## Air Conditioning / Heating

- Custom Integral Vent System
- Zone-Controlled Reverse-Cycle System, 240V (40,000 BTU)

## Galley

- Solid-Surface Countertop

- Wood Flooring
- Freezer w /Icemaker & Stainless-Steel Front - 120V
- Microwave/Convection Oven
- Refrigerator w/ Stainless-Steel Front - Dual Voltage (120V/12V)
- Drawer Storage
- Pantry Storage
- Two-Burner - 240V
- Trash Receptacle

## Cabin Features

- Carbon Monoxide Monitors
- Carpet - 100% Stainmaster
- Curtains, Custom Throughout
- Doors, Wood
- Handrails
- Interior Finishes and Treatments: Wood Cabinetry: Walnut or Rift Cut White Oak; Window Treatment: Silver Alloy Blinds; Carpet: Dark (Std) or Light
- Lighting, 12V Indirect
- Outlet & Switch Plates - Polished Nickel Finish
- Outlets, 120V GFI Protected
- Outlets, 12V Accessory
- Pillows, Accent
- Shades, Fabric Day/Night: w/Drape Trim
- Storage, In-Floor

## Master Stateroom

- Queen-Size Bed w/Innerspring Mattress, Pillows, Sheets, Coordinated Spread, Drawers & Storage Below
- Privacy Door w/Full Length Mirror
- Dressers (Port & Starboard)
- Lattice Style Headboard
- Mirrored Hanging Locker Cedar Lined w/Light
- Flat Screen TV w/DVD Player & Gaming Port
- Master Head
  - Tile Flooring
  - VacuFlush® Head
  - Shower w/Adjustable Shower Wand & Acrylic Door
  - Medicine Cabinet
  - Towel Bar



- Vanity w/Solid-Surface Countertop, Sink, Faucet & Storage Below

### Forward Stateroom

- Bed, Queen-Size
- Door, Privacy
- Door, Privacy w/Access to Forward Head/Shower
- Flooring, Carpet
- Hanging Lockers, Mirrored and Cedar Lined w/Light
- Storage, Lower Cabinet

### Third Stateroom

- Convertible Twin Beds with Mattresses, Pillows, Sheets, Coordinated Spreads & Storage Below
- Cedar Lined Hanging Locker w/Light
- Mirror
- Ample Storage & Drawers

### Forward Stateroom Head / Shower

- Door, Privacy
- Flooring, Tile
- Handrails: Stainless Steel
- Head: VacuFlush®
- Power Vent, 12V
- Robe Hook
- Shower w/Adjustable Grohe Shower Wand & Acrylic Door
- Storage, Medicine Cabinet: Mirrored
- Towel Bar
- Towels - Sea Ray
- Vanity w/Solid-Surface Countertop, Sink, Faucet & Storage Below

### Waste Systems

- VacuFlush Head Systems throughout.
- 68 Gallon Holding Tank w/Dockside Pump-Out
- Sahara S750 Pump (Sump Box)

## Water System

- Freshwater Washdown System (Transom, Engine Room & Anchor Locker)
- Cockpit Shower
- Water Heater (20-Gallon): 240V
- Water Manifold System

## Underwater Gear

- Zeus Drive Spare Propeller Set
- Hydraulic Trim Tabs

## Electrical Systems

- Batteries, 8-D Type w/Trays
- Battery Charger/Converter 120V/60 Amp/12V
- Battery Solenoid Switches, 12V (3)
- Cable Television System w/Inlet
- Panel, Circuit Breaker
- Panel, DC Main Breaker
- Panel, Main Distribution - AC
- Panel, Main Distribution - DC
- Shore Power, Cablemaster
- Transformer, Shore Power Isolation
- Wiring, Color-Coded

## Fuel System

- Diesel Fuel System w/ Electric Transfer Pump
- USCG - Type A-1 Fuel Lines
- (2) 253 Gallon Aluminum Fuel Tanks

## Power Plant

- Cummins® QSC 600's (Zeus Marine Propulsion System)
- Kohler® 17KW Generator (Optional Upgrade)
- Shore Power ISO Boost 240V/60

## Engine Room

- Bilge Pumps, 12V Automatic
- Bilge Pumps, 12V Automatic High-Water
- Blowers, 12V Bilge (2)
- Fire Suppression System
- Gel-Coated Engine Room
- Insulation, Engine Room - 2"
- Ladder, Stainless Steel
- Lighting, 12V

## Manufacturer Provided Description

More ambitious than any other motor yacht in its class, the 510 Fly is a bridge boat ready to take command of the water. Its stately design includes an expansive layout as well as many social zones. Driven by powerful diesel inboards or optional Zeus propulsion, it has an exceptional fuel capacity, plus all the strength and durability needed for exploring larger waters. A full-beam mid-master and two additional staterooms further entice owners and guest to leave the ordinary behind.

## Key Features

- All the yachting necessities including fully equipped, standard upper and lower helm stations
- Designed for entertainment with many social zones and continuous cockpit and salon interaction
- Zeus Propulsion
- Transom Lazarette & Crew quarters
- Expansive bridge layout features multiple convertible seating, lounging, and dining areas

## Исключения

---

При продаже яхты исключаются личные вещи владельца.

## Отказ от ответственности

---

Компания предоставляет описание судна или яхты добросовестно, но не может гарантировать точность этой информации, а также не ручается за техническое состояние. Покупатель должен проинструктировать своих агентов или оценщиков исследовать представленную информацию более подробно, по собственному желанию. Продажа судна или яхты, изменение цены или снятие с продажи будет происходить без предварительного уведомления.

# ФОТОГРАФИИ





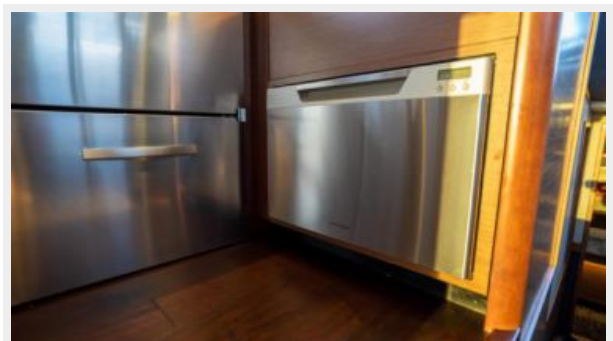
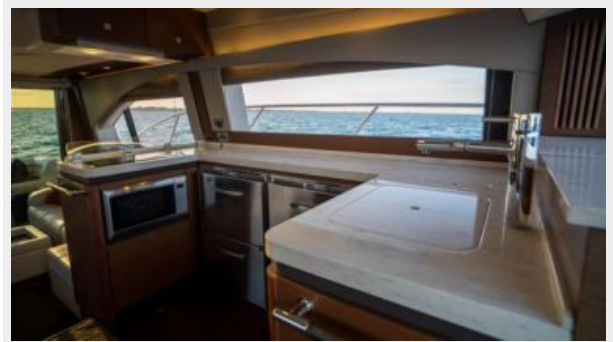


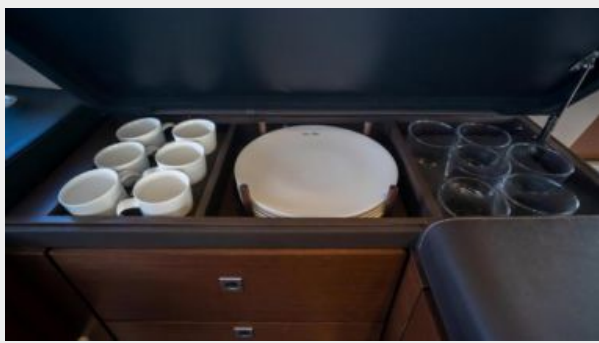


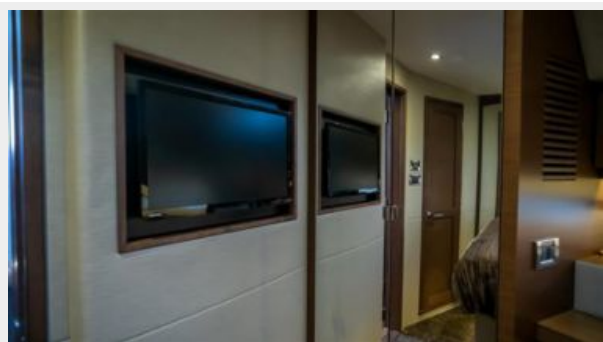


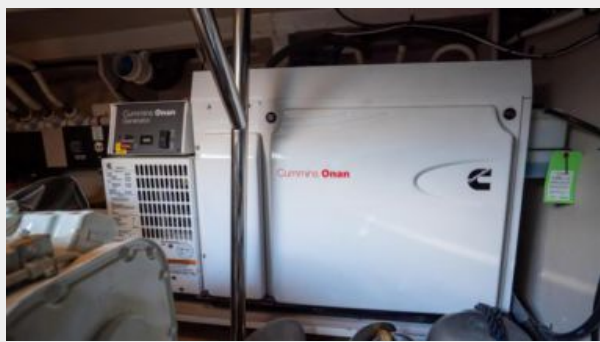














# КОНТАКТЫ

---

Андрей Шестаков (Andrey Shestakov) – ведущий яхтенный брокер отдела продаж яхт и судов компании Shestakov Yacht Sales Inc. Официальный представитель Shestakov Yacht Sales Inc. для русскоговорящих клиентов в центральном офисе компании в Майами/Форт Лодердейл/Флорида/США.

## Контактная информация

---

Email: [andrey@shestakovyachtsales.com](mailto:andrey@shestakovyachtsales.com)

Web: [shestakovyachtsales.com](http://shestakovyachtsales.com)

## Телефоны

---

Краснодарский край: **+7(918)465-66-44**

США, Майами, Флорида: **+1(954)274-4435**

## Время работы

---

Понедельник – Суббота: **9:00 - 21:00**  
EDT

Воскресенье: **Закрето**

## Адрес

---



Harbour Towne Marina, 850 NE 3rd St,  
STE 213, Dania, FL 33004