

VIKING 60



Year Built: 1995

Model: Motor Yacht

Price: PRICE ON APPLICATION

LOA: 60' (18.29mm)

Beam: 17.5

Min Draft: 4' 10" (1.47mm)

Max Draft: 5' (1.52mm)

Cruise Speed: 24 Knots Kts. (28 MPH)

Max Speed: 32 Knots Kts. (37 MPH)

Our experienced yacht broker, Andrey Shestakov, will help you choose and buy a yacht that best suits your needs **Viking 60** — n/a from our catalogue. Presently, at Shestakov Yacht Sales Inc., we have a wide variety of yachts available on our sale's list. We also work in close contact with all the big yacht manufacturers from all over the world.

If you would like to buy a yacht **Viking 60** — n/a or would like help answering any questions concerning purchasing, selling or chartering a yacht, please call **+1(954)274-4435**

TABLE OF CONTENTS

TABLE OF CONTENTS	2
SPECIFICATIONS	3
Overview	3
Basic Information	3
Dimensions	3
Speed, Capacities and Weight	4
Accommodations	4
Hull and Deck Information	4
Engine Information	4
PHOTOS	5
CONTACTS	16
Contact details	16
Telephones	16
Office hours	16
Address	16

SPECIFICATIONS

Overview

This Viking 60 is being carefully maintained, the owner has a special interest in all details of this wonderful Viking. Everything on this boat is working perfectly, name it, electronics, water pumps, hoses, hydraulic systems, lights, air conditioning systems, refrigerator, ice maker, auto pilot, TV sets, Directv antenna, sound systems, speakers , etc.

Both engines working perfect and propels this boat on a 23-24 cruise and a top of 31 knots.

It had a renovation and curtains and blinds are Hunter Douglas, some of them electric powered.

Also has a Hydraulic Davit to move a 13 feet Artigianna Battelli AB tender with 50 hp Honda 4 strokes.

Engine room clear and shiny.

This yacht is a must see ...!

Turnkey condition...!

Basic Information

Category: Motor Yacht

Model Year: 1996

Year Built: 1995

Dimensions

LOA: 60' (18.29mm)

Beam: 17.5

Min Draft: 4' 10" (1.47mm)

Max Draft: 5' (1.52mm)

Speed, Capacities and Weight

Cruise Speed: 24 Knots Kts. (28 MPH)

Max Speed: 32 Knots Kts. (37 MPH)

Water Capacity: 200 Gallons

Holding Tank: 80 Gal Gallons

Fuel Capacity: 1300 Gal Gallons

Accommodations

Total Cabins: 3

Sleeps: 6

Total Heads: 3

Hull and Deck Information

Hull Material: Fiberglass

Hull Color: White

Engine Information

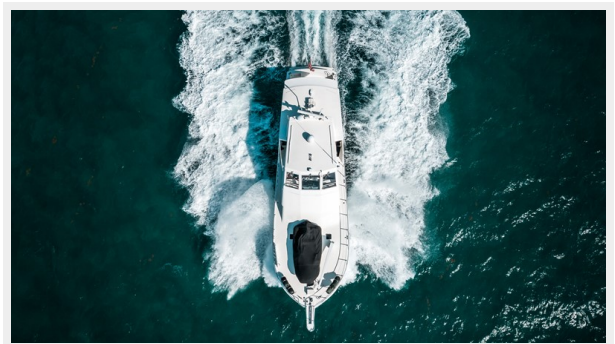
Engines: 2

Manufacturer: MAN

Engine Type: Inboard

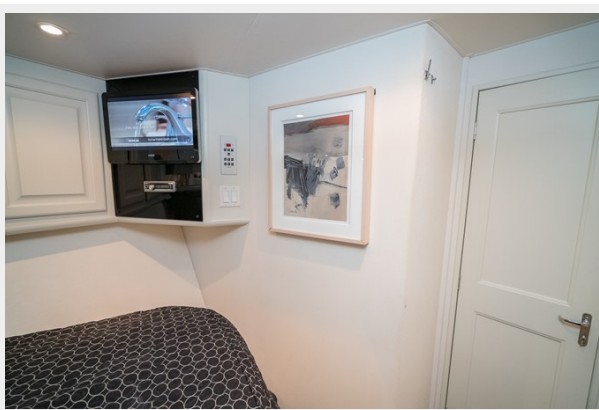
Fuel Type: Diesel

PHOTOS



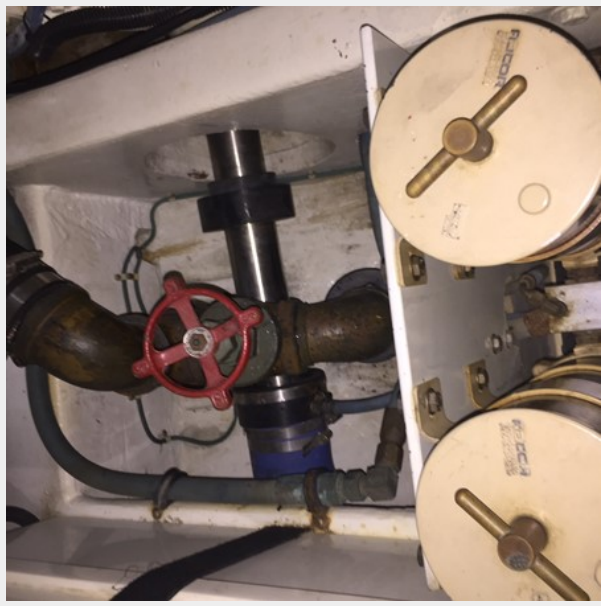




















CONTACTS

Andrey Shestakov, leading yacht broker of the sales department of Shestakov Yacht Sales Inc. Shestakov Yacht Sales Inc., the official representative of the Miami/Fort Lauderdale FL headquarters.

Contact details

Email: andrey@shestakovyachtsales.com

Web: shestakovyachtsales.com/en/

Telephones

USA: +1(954)274-4435

Office hours

Monday – Saturday: **9:00 - 21:00** EDT

Sunday: **closed**

Address



Harbour Towne Marina, 850 NE 3rd St,
STE 213, Dania, FL 33004