

BOLERO — PACIFIC SEACRAFT



Builder: PACIFIC SEACRAFT

Year Built: 1990

Model: Cruising Sailboat

Price: PRICE ON APPLICATION

Location: United States

LOA: 34' (10.36mm)

Beam: 10

Max Draft: 4' 11" (1.5mm)

Our experienced yacht broker, Andrey Shestakov, will help you choose and buy a yacht that best suits your needs **BOLERO — PACIFIC SEACRAFT** from our catalogue. Presently, at Shestakov Yacht Sales Inc., we have a wide variety of yachts available on our sale's list. We also work in close contact with all the big yacht manufacturers from all over the world.

If you would like to buy a yacht **BOLERO — PACIFIC SEACRAFT** or would like help answering any questions concerning purchasing, selling or chartering a yacht, please call **+1(954)274-4435**

TABLE OF CONTENTS

TABLE OF CONTENTS	2
SPECIFICATIONS	3
Overview	3
Basic Information	3
Dimensions	3
Speed, Capacities and Weight	3
Accommodations	3
Hull and Deck Information	4
Engine Information	4
PHOTOS	5
CONTACTS	9
Contact details	9
Telephones	9
Office hours	9
Address	9

SPECIFICATIONS

Overview

AC/heat ** Cutter Rig ** Nicely Updated ** Varnished Teak ** Windlass ** Dodger/Bimini ** Refrigeration ** Factory supplied Upgrades ** Custom Winter Cover ** More! (See FULL SPECS)

The renowned and respected Pacific Seacraft 34, designed by Bill Crealock, is widely considered to be among the most rugged and ocean-worthy vessels in her class. With her stunning varnished teak joinery and her ongoing program of maintenance and upgrades, BOLERO certainly stands out among the many Pacific Seacraft/ Crealock collaborations currently afloat.

Basic Information

Category: Cruising Sailboat

Sub Category: Cutter

Model Year: 1990

Year Built: 1990

Country: United States

Dimensions

LOA: 34' (10.36mm)

LWL: 26' 2" (7.98mm)

Beam: 10

Max Draft: 4' 11" (1.5mm)

Speed, Capacities and Weight

Water Capacity: 75 Gallons

Holding Tank: 16 Gal Gallons

Fuel Capacity: 38 Gal Gallons

Accommodations

Total Cabins: 1

Total Heads: 1

Hull and Deck Information

Hull Material: Fiberglass

Hull Designer: WIB Crealock

Engine Information

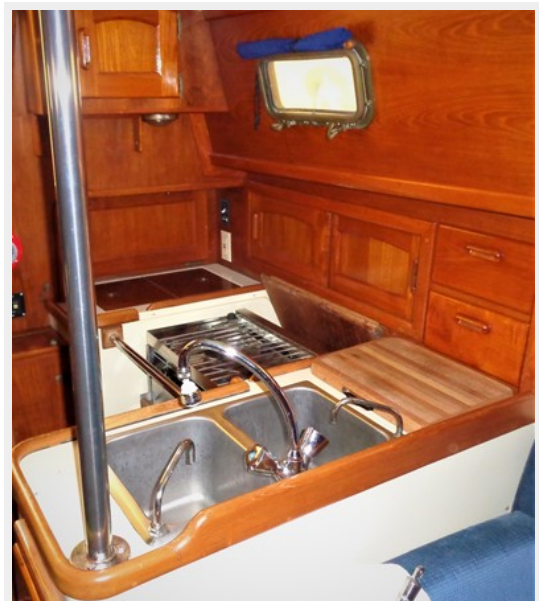
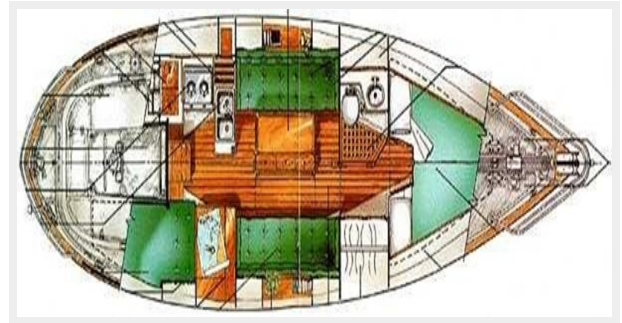
Engines: 1

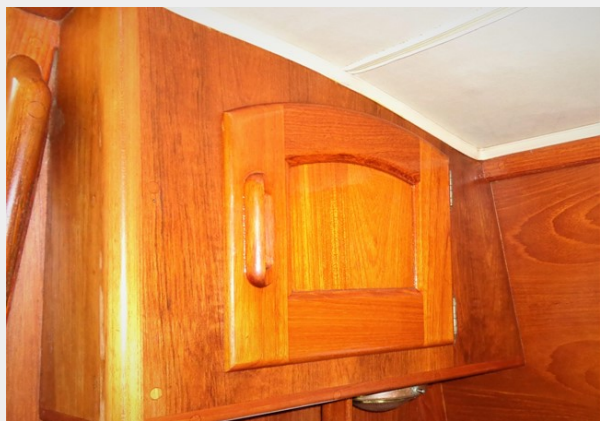
Manufacturer: Yanmar

Engine Type: Inboard

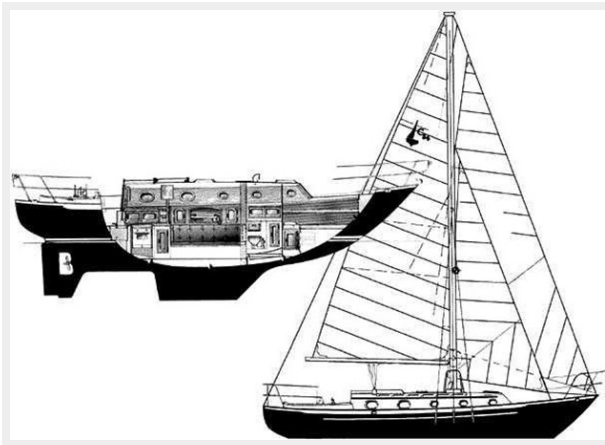
Fuel Type: Diesel

PHOTOS









CONTACTS

Andrey Shestakov, leading yacht broker of the sales department of Shestakov Yacht Sales Inc. Shestakov Yacht Sales Inc., the official representative of the Miami/Fort Lauderdale FL headquarters.

Contact details

Email: andrey@shestakovyachtsales.com

Web: shestakovyachtsales.com/en/

Telephones

USA: +1(954)274-4435

Office hours

Monday – Saturday: **9:00 - 21:00** EDT

Sunday: **closed**

Address



Harbour Towne Marina, 850 NE 3rd St,
STE 213, Dania, FL 33004