

MAI TOI — TARTAN



Builder: TARTAN

Year Built: 2009

Model: Cruising Sailboat

Price: PRICE ON APPLICATION

Location: United States

LOA: 44' 0" (13.41m)

Beam: 14' 1" (4.29m)

Min Draft: 5' 6" (1.68m)

Our experienced yacht broker, Andrey Shestakov, will help you choose and buy a yacht that best suits your needs **MAI TOI — TARTAN** from our catalogue. Presently, at Shestakov Yacht Sales Inc., we have a wide variety of yachts available on our sale's list. We also work in close contact with all the big yacht manufacturers from all over the world.

If you would like to buy a yacht **MAI TOI — TARTAN** or would like help answering any questions concerning purchasing, selling or chartering a yacht, please call **+1(954)274-4435**

TABLE OF CONTENTS

| | |
|--------------------------------------|----|
| TABLE OF CONTENTS | 2 |
| SPECIFICATIONS | 5 |
| Overview | 5 |
| Basic Information | 5 |
| Dimensions | 6 |
| Speed, Capacities and Weight | 6 |
| Accommodations | 6 |
| Hull and Deck Information | 6 |
| Engine Information | 6 |
| DETAILED INFORMATION | 7 |
| ACCOMMODATIONS | 7 |
| GALLEY | 9 |
| HEADS | 9 |
| WATER SYSTEMS | 10 |
| HULL AND DECK | 10 |
| CANVAS | 11 |
| SAILS AND RIGGING | 11 |
| ENGINE & MACHINERY | 12 |
| ELECTRICAL | 12 |
| ELECTRONICS | 12 |
| OTHER EQUIPMENT | 13 |
| EXCLUSIONS | 14 |
| Exclusions | 14 |
| Disclaimer | 14 |
| PHOTOS | 15 |
| 2141D39D-F076-40C4-BCFC-F2DB1003A1D8 | 15 |
| E8C11A30-0595-408F-A78C-857107168439 | 15 |
| 863761E1-7595-4AD1-B82E-E52DE3C321AE | 15 |

| | |
|--|----|
| 30B9E173-1E75-47EF-BEC1-AA9C97F72915 | 15 |
| 22FE2D06-FBDE-4AF7-AE86-971BE2B9CB44 | 16 |
| 7ED1C072-DEF7-4DED-89AD-649FA5A2C6DA | 16 |
| 01C10521-B761-4F54-A12B-195C4AAE12FD | 16 |
| 593691F2-0F81-4DD7-892A-B2469E0485F5 | 16 |
| 5709B74F-CBFE-42E3-9110-FB645C107168 | 16 |
| 106310C4-0611-4AD4-8695-347E3213FE29 | 16 |
| C2288EF5-034D-48C7-81D9-DBF2373F46E5 | 17 |
| 64AB647A-E750-483A-AB9E-0F78F047D935 | 17 |
| 93E0D0D6-CC29-4200-824F-708069678A3E | 17 |
| F8F40509-E1D8-4444-83A0-A57368518D17 | 17 |
| A9DE4972-94CA-4F35-B110-12DF69EBA558 | 17 |
| 8E5C8454-DD35-4C6C-B164-3E2068B8D991 | 17 |
| 0E38F0C3-1140-48DD-B521-6F2AC0E5C774_1_201_a | 18 |
| 848E1017-8332-44D8-B371-FF131B5924E4 | 18 |
| CA8C8C22-F9E7-4B8B-8A4D-EA670B259B2D | 18 |
| 93E0D0D6-CC29-4200-824F-708069678A3E | 18 |
| 8A633F97-F4AF-4060-9A4F-672815BDDCEF | 19 |
| 389DA0BC-C008-41B3-9C84-1449A18876A5 | 19 |
| A9FFC4E6-495D-4F89-8D91-C6BE9B9DDACF_1_201_a | 19 |
| 6229EDEB-C5A2-4ED8-8066-E3A81407E621_1_201_a | 19 |
| 192086B2-6AA0-4AB0-A719-3072DEEF5B29 | 20 |
| 641E4E3E-00FF-4AF7-9C60-A102AADBE24E_1_201_a | 20 |
| 10E76C2B-4B5C-4323-A8B3-5287580FDA77 | 20 |
| 7A1511A4-75A8-4763-9510-D6EC9777389D | 20 |
| 95ACF3E4-0F79-4B76-9597-F9670E1DE034 | 20 |
| 6105A39B-4791-4760-ACF4-ABB31BB27D6C_1_201_a | 20 |
| AE93EF38-34F2-4596-ADB6-35FD82F78CD7 | 21 |
| 779CF79F-CD17-4087-BEB3-8E65E4616412 | 21 |

| | |
|--|-----------|
| 95CFAA2D-A658-4855-8BB3-1E9C778C7600_1_201_a | 21 |
| 53FF3849-94A6-4FB4-9F04-2A849E6E593F | 21 |
| C023578C-A9C6-4411-9A9C-62AC4F6C0674 | 22 |
| 55C66C78-A6AA-4809-BCBD-CD3178EBBF35 | 22 |
| A35FCFBA-B30A-4864-A6CA-3685011E5110 | 22 |
| A79E18AE-47C4-46E1-957F-5129D5FBD1FB | 22 |
| 601E6649-DD63-4DC1-B7FE-B42BB66A79EF | 23 |
| 2783036A-232A-44D6-80B1-C6E3FE82FA95 | 23 |
| D63355EE-B752-4E06-BE81-2E14F2ECD598 | 23 |
| 8D6C6AC5-6CF2-4E29-8F2A-E9E16ADE6B69 | 23 |
| F2A847E7-6721-4EEA-8FB2-0B35FA98AF8D | 24 |
| FAFB3679-0175-49A5-B243-4A255AC4F68A | 24 |
| tartan-4400-350615_40e | 24 |
| CPYB Logo | 24 |
| 4400 sailplan | 24 |
| CONTACTS | 25 |
| Contact details | 25 |
| Telephones | 25 |
| Office hours | 25 |
| Address | 25 |

SPECIFICATIONS

Overview

The Tartan 4400 has been a very popular model since its introduction in 2003. In production from 2003 until 2010, there were 28 hulls, each for a discerning owner and each personalized to the owner's desires as only Tartan does. Combining the classic Tartan sailing performance, looks and state of the art construction with a higher level of comfort and elegance, the Tartan 4400 has won many awards, including Cruising World's Boat of the Year.

The Tartan 4400's raised coach roof gives you the headroom and space you've always wanted in the main cabin. The expansive galley complements the living quarters, supporting offshore cruising, island hopping or just exploring your local waters.

Our offering, MAI TOI, was custom built by Tartan for a very meticulous yachtsman. Having owned many boats, he wanted an elegant yacht that was comfortable for the family and guests that also performed well. The sumptuous forward stateroom features an island centerline queen-size bunk, with overhead lockers on either side. The layout is a two head, two cabin version. The entire time of his ownership the boat always sparkled and has been carefully maintained in tip-top shape.

She's a great looking boat underway and at the dock and a proven head-turner. Whether you are considering a Tartan 4400 specifically, a raised or deck saloon style boat or simply a pedigreed yacht that makes you proud every time you look at her, you owe it to yourself to come see MAI TOI. You won't be disappointed!

Basic Information

Category: Cruising Sailboat

Sub Category: Sloop

Model Year: 2009

Year Built: 2009

Country: United States

Coast Guard #: 1222048

Vessel Top: Bimini Top

Cockpit: Yes

Dimensions

LOA: 44' 0" (13.41m)

LWL: 37' 9" (11.51m)

Beam: 14' 1" (4.29m)

Min Draft: 5' 6" (1.68m)

Clearance: 63' 0" (19.20m)

MFG Length: 44' 0" (13.41m)

Speed, Capacities and Weight

Displacement: 24000 Pounds

Water Capacity: 200 Gallons

Holding Tank: 48 Gallons

Fuel Capacity: 80 Gallons

Accommodations

Total Cabins: 2

Total Heads: 2

Hull and Deck Information

Hull Material: Epoxy Composite

Deck Material: Composite Fiberglass

Hull Configuration: Bulb Keel

Hull Designer: Tim Jackett

Exterior Designer: Tim Jackett

Interior Designer: Tim Jackett

Engine Information

Engines: 1

Manufacturer: Volvo Penta

Model: D-275

Engine Type: Inboard

Fuel Type: Diesel

DETAILED INFORMATION

ACCOMMODATIONS

Sail locker: The dedicated sail locker is accessed from the foredeck and has loads of storage inside for sails, fenders, bicycles, dock lines and whatever else suits your fancy.

Forward stateroom: The forward stateroom has a centerline, walk around berth. There are drawers and additional storage beneath the berth and a step-up cabin sole for ease of getting in and out. Lockers and fiddled shelves line the hull along either side of the berth. There are also cedar-lined hanging and shelving lockers and numerous drawers for ample storage in this cabin.

Head: The head can be entered from the forward stateroom and is located on starboard; it's size was customized by making the space a foot longer than the standard layout. Entering from the stateroom, the sink is to your left and head is just after that. There is a locker beneath the counter and lockers with shelves above along the hull. The separate shower stall is aft and has a door to close it off. There is a fiberglass shower seat has a storage locker behind it.

Galley: The U-shaped wrap-around galley is located forward of the saloon and down two steps on port. There is loads of storage and counter space in here. Starting on the forward end, there are two large, deep sinks mounted on the corner, with drawers and locker storage beneath the counter. To the left is a cutting board area with a rubbish bin concealed beneath it. Above this section are a microwave and a locker with shelves.

Moving around along the hullside, there is a locker beneath the counter, with the stove to the left of that. Pot and pan storage is in a locker beneath the stove and four lockers with shelves are above along the hull.

The spacious aft counter wraps around from the hull and houses the freezer and refrigerator boxes. There are three top-access lids (one freezer and two fridge), with a front access door for the refrigerator compartment. Above the freezer part of the counter is yet another locker.

Saloon: The raised saloon is bright and spacious, with seven large ocean worthy ports allowing lots of light in and great visibility all around. The forward center hatch and two overhead hatches

open to provide great ventilation. The J-shaped dinette is on port and has an oval drop-leaf table that will easily seat six. There is loads of storage beneath the settee as well as behind the seat backs. Additionally, there are four lockers and a large fiddled shelf above and behind the seat back along the hull. Beneath the raised saloon floor is the machinery space, with great access to the engine and other systems for servicing as required.

Nav station: The nav station is on starboard and forward facing. The wide leather seat has an armrest outboard and electrical equipment beneath it. The nav table can easily accommodate a chart book, has good storage inside the table and four storage drawers beneath. There is a hinged top with storage beneath it just outboard of the armrest. Above the nav table is a peninsula shaped cabinet with electrical and electronic items. Along the hullside are more electrical and electronic items. Two over/under cubbies are aft of that panel. Both areas have hinged access panels for easy servicing.

Just forward of the nav is an entertainment and storage area. There is a fiddled counter space, with locker a locker for bottle storage above it and another below it.

Aft stateroom: The aft stateroom is on starboard and features a queen-sized berth. Well-lit and spacious, there's no cramped quarter berth feel to the space. There is plenty of drawer, hanging locker and shelf space in here.

Aft head: The aft head is on port aft of the dinette. As you enter, the head is to the right. The counter space wraps around from the head and across the aft bulkhead, with the molded in Granicote sink on the diagonal counter area. There is locker storage above and below the counter. The shower mixer and wand are mounted on the wall to the left of the counter.

- Teak and holly cabin sole
- Cherry faced bulkheads
- Cherry lined hull sides in staterooms
- Cherry hardwood interior joiner work
- Solid cherry ventilated raised panel locker doors
- Dovetail jointed drawers with solid cherry fronts
- Cedar lined hanging lockers with lights
- Tan leather saloon upholstery
- Cherry dinette table with folding leaves

GALLEY

Granicote countertops with cherry fiddles

Integral Granicote 9" deep double sinks

Corian cutting board/ sink covers

Single lever hot and cold water mixer with pull-out sprayer wand

Filtered water

Freshwater foot pump

Force 10 three burner LPG stove with oven and safety bar

Corian stove cover with cherry handles

Two LPG bottles in dedicated, vented locker

LPG Detector with automatic shut off

Tappan stainless steel microwave oven in a dedicated enclosure

Molded iceboxes with 4" insulation in the box, lids and door

Seafrost 12v. air-cooled refrigeration with top and front access

Lighted refrigeration box

Seafrost 12v. air-cooled freezer with top-loading access

Built-in trash bin with cutting board cover

LOADS of locker storage

HEADS

Forward head

- Entry from galley area and master stateroom
- Granicote countertop with integral sink and cherry fiddles
- Hot and cold water mixer
- Separate shower compartment with door
- Molded fiberglass shower seat and lockers
- Hot and cold shower mixer
- Shower spray wand

- Electric shower sump
- Vacu-Flush electric head
- 24 gallon holding tank
- Profile holding tank monitor
- Molded non-skid sole

Aft head

- Granicote countertop with integral sink and cherry fiddles
- Hot and cold water mixer
- Hot and cold shower mixer
- Shower spray wand
- Electric shower sump
- Vacu-Flush electric head
- 24 gallon holding tank
- Profile holding tank monitor
- Molded non-skid sole

WATER SYSTEMS

- 200 gallons of fresh water in two tanks with distribution manifold
- 12-gallon water heater operates on 110 VAC or engine heat exchanger
- Hot and cold pressure water with easy service access to pump and plumbing
- Water filtration system throughout
- Freshwater plumbing features polyethylene tubing and Whale mechanical fittings
- Horizon reverse osmosis Seafari watermaker
- Forespar Marelon thru-hull fittings throughout, UL approved and corrosion free
- Comb-o-matic 6200 under counter washer/dryer
- Freshwater washdown pump
- Hot & cold cockpit shower
- Electric bilge pumps (2)
- High water bilge alarms (2)
- Whale manual bilge pump

HULL AND DECK

- Modified epoxy resin
- Beavertail 5'6" draft lead keel
- Elliptical balanced spade rudder
- Flag Blue Awlgrip hull
- Custom stainless steel stem piece with double anchor rollers

- 45# CQR anchor with 150' of 3/8" HT G40 chain
- 25# Danforth anchor with 15' of 3/8" HT G40 chain and 150' of 5/8" 3-strand nylon rode
- Lewmar electric anchor windlass with up and down foot switches
- Foredeck sail locker with watertight collision bulkhead and ladder
- White deck with a contrasting sand nonskid finish
- Teak housetop grab rails (6)
- Teak cockpit coaming caps with integral cup holders
- Bomar stainless steel opening hatches (8)
- Opening stainless steel ports with screens (11)
- Chrome dorade vents with stainless steel guard (2)
- Teak rub strake with stainless steel cap
- Teak toe rail
- 10" stainless steel mooring cleats
- Double stainless steel bow and stern pulpits
- 27" high x 1 1/8" stainless steel stanchions
- Double wire lifelines
- Port and starboard boarding gates
- Custom teak stern rail seats in stern pulpits
- Electric swim platform
- Walkthrough transom to swim platform
- Teak and stainless steel swim ladder

CANVAS

- Dodger with Makrolon vision panels and side grab bars ('18)
- Bimini with observation window and connector ('18)
- Outboard motor cover
- Helm pedestal cover
- Companionway cover

SAILS AND RIGGING

- Keel-stepped, double spreader, in-mast furling aluminum mast
- 1x19 stainless steel wire rigging
- Split backstay with SSB insulators
- Forespar mechanical boom vang
- Harken deck hardware throughout
- Polished stainless steel outboard Genoa tracks on toe rails
- Harken inboard Genoa tracks with adjustable cars
- Harken mainsheet traveler track and car
- Harken 53.2STEC electric primary winches (2)
- Harken 44.2STC secondary winches (2)

- Harken 44.2STEC electric control winch on starboard housetop
- Spinlock line stoppers on housetop (6)
- Toe rail-mounted spinnaker pad eyes
- Courtesy flag halyard
- All control lines are led aft to the cockpit
- In-mast furling main
- Furling jib

ENGINE & MACHINERY

- 75 HP Volvo Penta Turbo with approx. 1200 hours
- Volvo Penta 150S saildrive with 3-blade folding prop
- Racor dual selectable fuel filters
- Racor vacuum gauge
- Lewmar steering console with stainless steel binnacle
- Single lever engine control
- Lewmar leather-wrapped stainless steel wheel
- Ritchie compass with stainless steel cover
- Lewmar 8 hp bow thruster with joystick helm control
- Marine Air reverse cycle heat/ air-conditioning units (3)

ELECTRICAL

- 30A 120V shore power connections (2)
- 30A 50' shore power cords (2)
- Blue Sea Systems 120V AC electrical panel
- MasterVolt Whisper 6Kw generator with 200 hrs.
- Two 8D AGM house batteries ('19)
- Group 27 AGM starting battery
- Group 27 AGM bow thruster battery
- Group 27 AGM genset starting battery
- High output alternator with smart regulator
- BEP AC/DC/tankage monitor
- Link 2000 battery monitor
- Magnum ME-RC inverter/charger controller
- Magnum 2000W inverter/charger

ELECTRONICS

- Raymarine HD radar mounted on mast
- Raymarine E 120 chartplotter at helm

- Raymarine E 80 at nav station
- Navionics Platinum charts from Maine through Florida, the Bahamas and Caribbean, including Bermuda and the Mid-Atlantic canyons
- Raymarine linear drive autopilot
- Raymarine SmartPilot autopilot control head
- Raymarine Smart Remote for autopilot
- Raymarine ST60+ Wind
- Raymarine ST60+ Depth
- Raymarine ST60+ Speed and Log
- ICOM VHF radio with DSC
- ICOM CommandMic II RAM mic at helm
- ICOM CommandMic II RAM mic at forward cabin entrance
- ICOM SSB at nav station
- ICOM IC-M72 handheld VHF radio
- Iridium Model 9505A satellite phone
- SPOT MOB monitor
- McMurdo Rescue 406 Mhz EPIRB
- Sony AM/FM/CD stereo with Sony Xplode speakers
- Samsung flatscreen TV in main saloon
- Loudhailer mounted on mast
- Tri-Lens radar reflector

OTHER EQUIPMENT

- Viking RescYou 4 person Offshore life raft in canister
- Achilles HB300FX RIB dinghy ('14)
- 8hp Mercury 4 cycle outboard motor ('14)
- Outboard motor hoist
- Outboard motor pad
- MOB pole
- Lifesling MOB rescue system with 125' retrieval line
- Type IV horseshoe buoy with 75' of 3/8" polypropylene line
- Forespar floating strobe light
- PFD's
- Throwable seat cushions
- Abandon ship bag
- Flares
- Folding teak cockpit table
- Starboard drink holders on binnacle
- Rod holder
- Weems & Plaath stainless steel ships clock and barometer
- Fenders and dock lines
- Extensive collection of paper charts and chart books

- Extensive collection of records
- WASHED WEEKLY!!!

EXCLUSIONS

Owner's personal effects and any items not specifically described in this listing

Exclusions

Owner's personal belongings.

Disclaimer

The Company offers the details of this vessel or yacht in good faith but cannot guarantee or warrant the accuracy of this information nor warrant the condition of the vessel. A buyer should instruct his representatives, agents, or his surveyors, to investigate such details as the buyer desires validated. This vessel or yacht is offered subject to prior sale, price change, or withdrawal without notice.

PHOTOS

2141D39D-F076-40C4-BCFC-
F2DB1003A1D8



E8C11A30-0595-408F-A78C-857107168439



863761E1-7595-4AD1-B82E-E52DE3C321AE 30B9E173-1E75-47EF-BEC1-AA9C97F72915



22FE2D06-FBDE-4AF7-AE86-
971BE2B9CB44



7ED1C072-DEF7-4DED-89AD-
649FA5A2C6DA



01C10521-B761-4F54-A12B-195C4AAE12FD 593691F2-0F81-4DD7-892A-B2469E0485F5



5709B74F-CBFE-42E3-9110-FB645C107168 106310C4-0611-4AD4-8695-347E3213FE29



C2288EF5-034D-48C7-81D9-DBF2373F46E5



64AB647A-E750-483A-AB9E-0F78F047D935



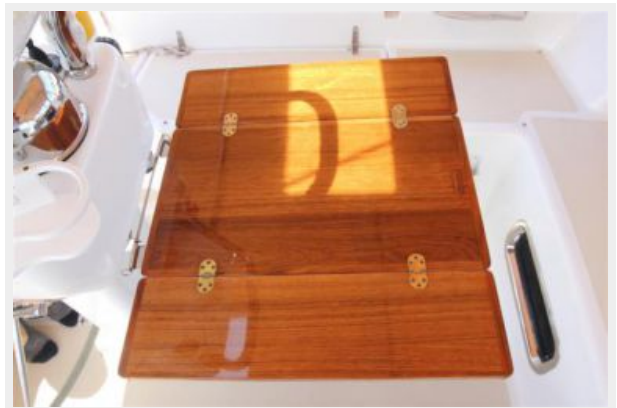
93E0D0D6-CC29-4200-824F-708069678A3E F8F40509-E1D8-4444-83A0-A57368518D17



A9DE4972-94CA-4F35-B110-12DF69EBA558

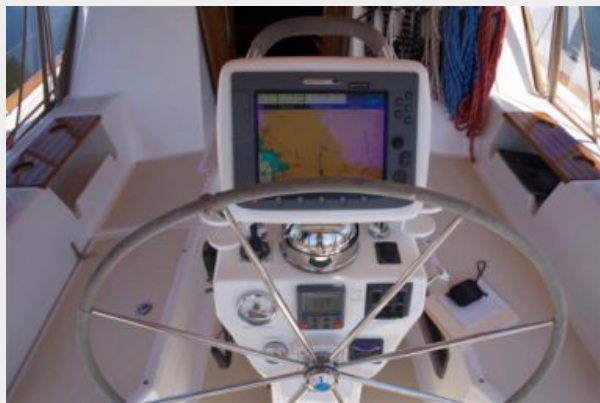


8E5C8454-DD35-4C6C-B164-3E2068B8D991



0E38F0C3-1140-48DD-B521-
6F2AC0E5C774_1_201_a

848E1017-8332-44D8-B371-FF131B5924E4



CA8C8C22-F9E7-4B8B-8A4D-
EA670B259B2D



93E0D0D6-CC29-4200-824F-708069678A3E



8A633F97-F4AF-4060-9A4F-672815BDDCEF



389DA0BC-C008-41B3-9C84-1449A18876A5



A9FFC4E6-495D-4F89-8D91-
C6BE9B9DDACF_1_201_a



6229EDEB-C5A2-4ED8-8066-
E3A81407E621_1_201_a



192086B2-6AA0-4AB0-A719-3072DEEF5B29



641E4E3E-00FF-4AF7-9C60-A102AADBE24E_1_201_a



10E76C2B-4B5C-4323-A8B3-5287580FDA77 7A1511A4-75A8-4763-9510-D6EC9777389D



95ACF3E4-0F79-4B76-9597-F9670E1DE034



6105A39B-4791-4760-ACF4-ABB31BB27D6C_1_201_a



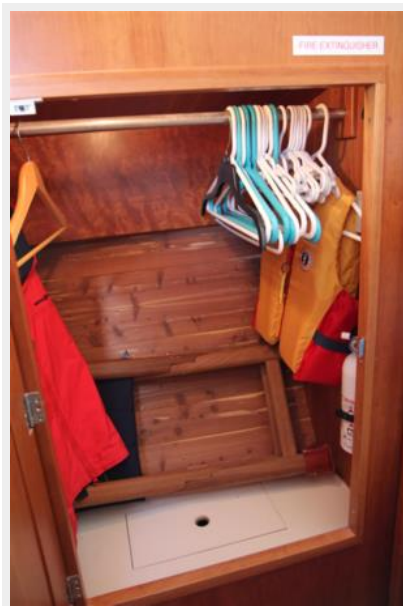
AE93EF38-34F2-4596-ADB6-35FD82F78CD7



779CF79F-CD17-4087-BEB3-8E65E4616412



53FF3849-94A6-4FB4-9F04-2A849E6E593F



95CFAA2D-A658-4855-8BB3-1E9C778C7600_1_201_a



C023578C-A9C6-4411-9A9C-62AC4F6C0674

55C66C78-A6AA-4809-BCBD-
CD3178EBBF35



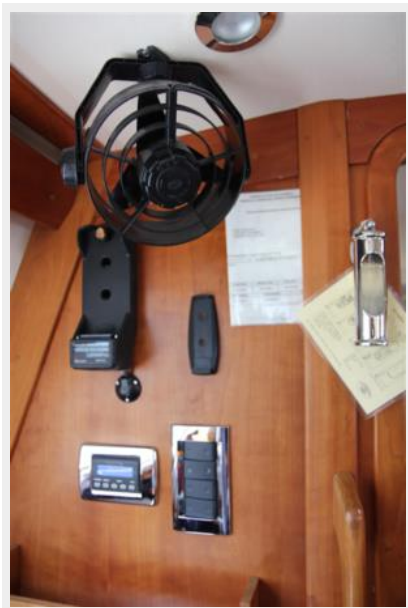
A35FCFBA-B30A-4864-A6CA-
3685011E5110



A79E18AE-47C4-46E1-957F-
5129D5FBD1FB



601E6649-DD63-4DC1-B7FE-
B42BB66A79EF



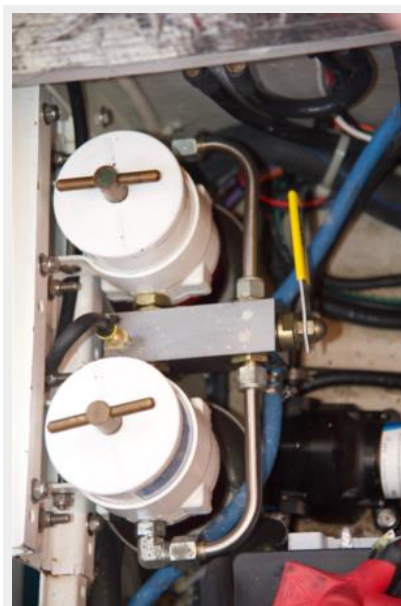
2783036A-232A-44D6-80B1-C6E3FE82FA95



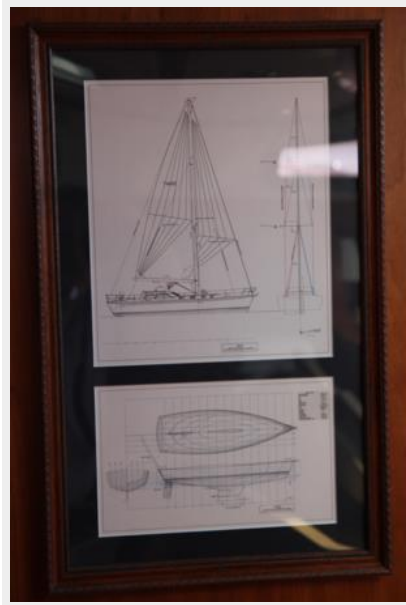
8D6C6AC5-6CF2-4E29-8F2A-
E9E16ADE6B69



D63355EE-B752-4E06-BE81-2E14F2ECD598



F2A847E7-6721-4EEA-8FB2-
0B35FA98AF8D



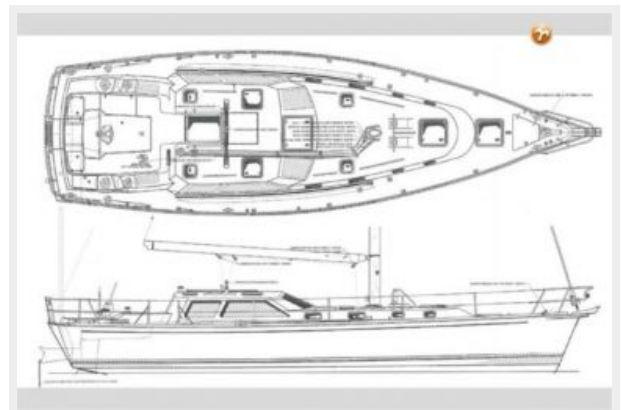
FAFB3679-0175-49A5-B243-4A255AC4F68A



CPYB Logo



tartan-4400-350615_40e



4400 sailplan



CONTACTS

Andrey Shestakov, leading yacht broker of the sales department of Shestakov Yacht Sales Inc. Shestakov Yacht Sales Inc., the official representative of the Miami/Fort Lauderdale FL headquarters.

Contact details

Email: andrey@shestakovyachtsales.com

Web: shestakovyachtsales.com/en/

Telephones

USA: +1(954)274-4435

Office hours

Monday – Saturday: **9:00 - 21:00** EDT

Sunday: **closed**

Address



Harbour Towne Marina, 850 NE 3rd St,
STE 213, Dania, FL 33004