

## PIER PRESSURE — BAYLINER



**Builder:** BAYLINER

**Year Built:** 2000

**Model:** Cruising Yacht

**Price:** PRICE ON APPLICATION

**Location:** United States

**LOA:** 28' 0" (8.53m)

**Beam:** 9' 10" (3.00m)

**Max Draft:** 2' 8" (0.81m)

**Cruise Speed:** 24 Kts. (28 MPH)

**Max Speed:** 29 Kts. (33 MPH)

Our experienced yacht broker, Andrey Shestakov, will help you choose and buy a yacht that best suits your needs **Pier Pressure — BAYLINER** from our catalogue. Presently, at Shestakov Yacht Sales Inc., we have a wide variety of yachts available on our sale's list. We also work in close contact with all the big yacht manufacturers from all over the world.

If you would like to buy a yacht **Pier Pressure — BAYLINER** or would like help answering any questions concerning purchasing, selling or chartering a yacht, please call **+1(954)274-4435**

# TABLE OF CONTENTS

TABLE OF CONTENTS	2
SPECIFICATIONS	5
Overview	5
Basic Information	5
Dimensions	5
Speed, Capacities and Weight	5
Accommodations	5
Hull and Deck Information	6
Engine Information	6
DETAILED INFORMATION	7
MAIN DESCRIPTION	7
2000 BAYLINER CIERA 2855 WALKTHROUGH	7
2000 BAYLINER CIERA 2855 COCKPIT/HELM	7
2000 BAYLINER CIERA 2855 HULL/TOPSIDES/GROUND TACK	7
2000 BAYLINER CIERA 2855 ENGINE/SYSTEMS/ELECTRONIC	8
2000 BAYLINER CIERA 2855 INTERIOR	8
DISCLAIMER	8
Exclusions	8
Disclaimer	8
PHOTOS	9
1	9
2	9
3	9
4	9
5	10
6	10
7	10
8 (2)	10

---

9	11
8	11
10	11
11	11
13	12
12	12
15	12
14	12
16	13
17	13
18	13
19	13
20	14
21	14
22	14
22(3)	14
23	15
24	15
25	15
26	15
28	16
27	16
29	16
30	16
31	16
32	16
33	17
34	17
36	17

---

---

35	17
37	18
38	18
39	18
40	18
41	19
42	19
44	19
43	19
45	20
46	20
47	20
CONTACTS	21
Contact details	21
Telephones	21
Office hours	21
Address	21

---

# SPECIFICATIONS

---

## Overview

---

Bayliners have a reputation of being light, nimble, and practically designed. "Pier Pressure," is no exception, and is lightly used having spent its life on the Lower Chesapeake Bay. With a single fuel-injected Mercruiser 454, reliability and speed were in mind for this spacious express cruiser. With several recent upgrades, this Ciera will keep you dry with its 2-year old fully re-designed enclosure that closes in the whole cockpit. 2019 saw a major overhaul of the engine and its components. Lots of "bulletproofing," was done such as tuneups, new hoses, hydraulic lines, bellows, and seals. It's ready to be cruised! Drinks for 8, dinner for 6, and sleeps 4!

## Basic Information

---

**Category:** Cruising Yacht

**Model Year:** 2000

**Year Built:** 2000

**Country:** United States

## Dimensions

---

**LOA:** 28' 0" (8.53m)

**Beam:** 9' 10" (3.00m)

**Max Draft:** 2' 8" (0.81m)

## Speed, Capacities and Weight

---

**Cruise Speed:** 24 Kts. (28 MPH)

**Max Speed:** 29 Kts. (33 MPH)

**Water Capacity:** 33 Gallons

**Holding Tank:** 20 Gallons

**Fuel Capacity:** 102 Gallons

## Accommodations

---

**Total Cabins:** 1

**Total Heads:** 1

---

## Hull and Deck Information

---

**Hull Material:** Fiberglass

## Engine Information

---

**Engines:** 1

**Manufacturer:** Mercruiser

**Model:** 7.4 MPI

**Engine Type:** I/O

**Fuel Type:** Gas/Petrol

# DETAILED INFORMATION

## MAIN DESCRIPTION

Bayliners have a reputation of being light, nimble, and practically designed. "Pier Pressure," is no exception, and is lightly used having spent its life on the Lower Chesapeake Bay. With a single fuel-injected Mercruiser 454, reliability and speed were in mind for this spacious express cruiser. With several recent upgrades, this Ciera will keep you dry with its 2-year old fully re-designed enclosure that closes in the whole cockpit. 2019 saw a major overhaul of the engine and its components. Lots of "bulletproofing," was done such as tuneups, new hoses, hydraulic lines, bellows, and seals. It's ready to be cruised! Drinks for 8, dinner for 6, and sleeps 4!

## 2000 BAYLINER CIERA 2855 WALKTHROUGH

Boarding from the swim platform, the entry door is to starboard which leads you to the aft cockpit. There is a forward-facing fold down style seat in the aft, which is directly over the engine room hatch. Directly in front is a swingback seat located to port, to the left of the helm. There is a half-u seat which wraps from the entry door to the swingback seat which allows a great view. The helm is located to starboard, and has a large comfortable seat and a great view of the boat from a docking perspective. Left of the helm is the entryway which is located both amid and athwartships. A few easy steps down brings you into the cozy main salon and galley. Galley located to port, and salon seating to starboard, food for guests doesn't have far to travel when it leaves the two-burner stove. There are several storage compartments located throughout the boat's common area/galley. Aft of the galley is the boat's guest stateroom, located to starboard. It offers restful sleep for a couple, and is very comfortable. The boat's electric panel is located ensuite. Located to starboard is the boat's head. It has a newer seawater flush head located to left, a sink and faucet to right, and a wet-head style shower is located above. The owner's berth in amidships forward, and offers a spacious full-beam sleeping area with privacy curtain.

## 2000 BAYLINER CIERA 2855 COCKPIT/HELM

Ample seating aft, starboard, and amidships  
Storage blow helm, and under seating  
Fiberglass cockpit and helm sole with synthetic teak material covers  
Full 360-view from all seats  
Concise helm  
Single engine controls  
Onboard kill-switches  
Factory engine gauges  
Lowrance HDS 7  
Chartplotter  
HawkEye depthsounder  
Standard Horizon VHF  
Engine access aft amidships

## 2000 BAYLINER CIERA 2855 HULL/TOPSIDES/GROUND TACK

Factory gelcoat  
Factory nonskid on side and foredecks  
Bottom Painted  
Stainless bowrail  
Cleats aft, mid, and forward  
Portlights offering natural light in bow (owners berth), and amidship (main salon)  
(3) opening hatches on foredeck  
12 Lb Danforth anchor  
150' of anchor line with small amount of

chain

---

## 2000 BAYLINER CIERA 2855 ENGINE/SYSTEMS/ELECTRONIC

---

Mercruiser MPI 7.4L motor 437 Hours I/O (2) Bilge Pumps Automatic Floats Kuuma 6 Gallon hot water heater Freshwater pump Concise AC/DC panel Shorepower connections to port (2) 30 A Cords 12000 BTU marine A/C unit (1 zone) Saltwater circulation pump Fire detection system Fire detectors Carbon monoxide detectors USCG approved extinguishers Med-Kit (USCG app'd) Lowrance HDS 7 Chartplotter HawkEye Depth Sounder Standard Horizon Fuel Flow Meter Standard Horizon Eclipse VHF radio

---

## 2000 BAYLINER CIERA 2855 INTERIOR

---

Master stateroom forward V-Style Queen Privacy Curtain Cozy salon amidships with settee/berth offset to starboard Galley to port Norcold Refrigerator 2-Burner stove Generous storage throughout galley Guest stateroom aft and offset to starboard Full/Queen aft berth Head is offset to starboard Wet head (No separate shower stall) Manual marine head

---

## DISCLAIMER

---

The Company offers the details of this vessel in good faith but cannot guarantee or warrant the accuracy of this information nor warrant the condition of the vessel. A buyer should instruct his agents, or his surveyors, to investigate such details as the buyer desires validated. This vessel is offered subject to prior sale, price change, or withdrawal without notice.

---

## Exclusions

---

Owner's personal belongings.

---

## Disclaimer

---

The Company offers the details of this vessel or yacht in good faith but cannot guarantee or warrant the accuracy of this information nor warrant the condition of the vessel. A buyer should instruct his representatives, agents, or his surveyors, to investigate such details as the buyer desires validated. This vessel or yacht is offered subject to prior sale, price change, or withdrawal without notice.



# PHOTOS

1



2



3



4



5



6



7



8 (2)



8



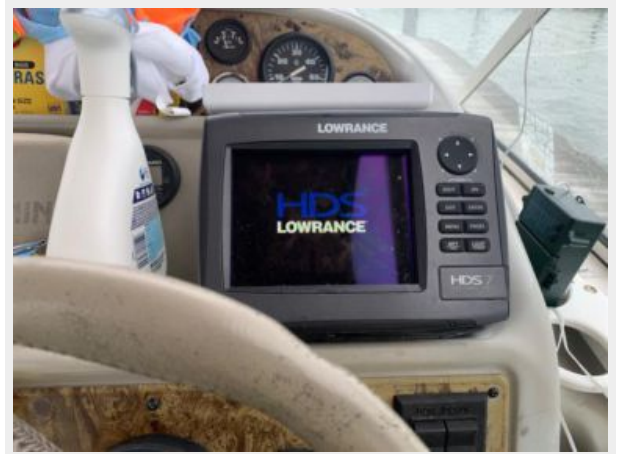
9



10



11





12



13



14



15



16



17



18



19



20



21



22

22(3)



23



24



25



26





27



28



29



30



31



32





33



34



35



36



37



38



39



40



41



42



43



44



45



46



47



# CONTACTS

---

Andrey Shestakov, leading yacht broker of the sales department of Shestakov Yacht Sales Inc. Shestakov Yacht Sales Inc., the official representative of the Miami/Fort Lauderdale FL headquarters.

## Contact details

---

Email: [andrey@shestakovyachtsales.com](mailto:andrey@shestakovyachtsales.com)

Web: [shestakovyachtsales.com/en/](http://shestakovyachtsales.com/en/)

## Telephones

---

USA: +1(954)274-4435

## Office hours

---

Monday – Saturday: **9:00 - 21:00** EDT

Sunday: **closed**

## Address

---



Harbour Towne Marina, 850 NE 3rd St,  
STE 213, Dania, FL 33004