

PIER PRESSURE — BAYLINER



Судостроитель: BAYLINER

Год постройки: 2000

Модель: Cruising Yacht

Цена: **ЦЕНА ЯХТЫ ПО ЗАПРОСУ**

Местонахождение: United States

Длина общая: 28' 0" (8.53m)

Ширина: 9' 10" (3.00m)

Макс. осадка: 2' 8" (0.81m)

Крейс. скорость: 24 Kts. (28 MPH)

Макс. скорость: 29 Kts. (33 MPH)

Купить **Pier Pressure — BAYLINER** а также выбрать подходящую вам яхту из нашего каталога яхт вам поможет опытный яхтенный брокер Андрей Шестаков. На сегодняшний день компания **Shestakov Yacht Sales Inc.** имеет большое количество яхт в собственном списке продаж, а также тесно сотрудничает со всеми крупными яхтенными производителями по всему миру.

Для того чтобы купить яхту **Pier Pressure — BAYLINER** а также проконсультироваться по любому вопросу связанному с покупкой, продажей, чартером яхт позвоните по телефону **+7(918)465-66-44**.

ОГЛАВЛЕНИЕ

| | |
|----------------------------------------------------|----|
| ОГЛАВЛЕНИЕ | 2 |
| ХАРАКТЕРИСТИКИ | 5 |
| Обзор | 5 |
| Основная информация | 5 |
| Размеры | 5 |
| Скорость, вместимость и масса | 5 |
| Размещение | 5 |
| Корпус и палуба | 6 |
| Информация о двигателе | 6 |
| ПОДРОБНОЕ ОПИСАНИЕ | 7 |
| MAIN DESCRIPTION | 7 |
| 2000 BAYLINER CIERA 2855 WALKTHROUGH | 7 |
| 2000 BAYLINER CIERA 2855 COCKPIT/HELM | 7 |
| 2000 BAYLINER CIERA 2855 HULL/TOPSIDES/GROUND TACK | 7 |
| 2000 BAYLINER CIERA 2855 ENGINE/SYSTEMS/ELECTRONIC | 8 |
| 2000 BAYLINER CIERA 2855 INTERIOR | 8 |
| DISCLAIMER | 8 |
| Исключения | 8 |
| Отказ от ответственности | 8 |
| ФОТОГРАФИИ | 9 |
| 1 | 9 |
| 2 | 9 |
| 3 | 9 |
| 4 | 9 |
| 5 | 10 |
| 6 | 10 |
| 7 | 10 |
| 8 (2) | 10 |

| | |
|-------|----|
| 9 | 11 |
| 8 | 11 |
| 10 | 11 |
| 11 | 11 |
| 13 | 12 |
| 12 | 12 |
| 15 | 12 |
| 14 | 12 |
| 16 | 13 |
| 17 | 13 |
| 18 | 13 |
| 19 | 13 |
| 20 | 14 |
| 21 | 14 |
| 22 | 14 |
| 22(3) | 14 |
| 23 | 15 |
| 24 | 15 |
| 25 | 15 |
| 26 | 15 |
| 28 | 16 |
| 27 | 16 |
| 29 | 16 |
| 30 | 16 |
| 31 | 16 |
| 32 | 16 |
| 33 | 17 |
| 34 | 17 |
| 36 | 17 |

| | |
|-----------------------|-----------|
| 35 | 17 |
| 37 | 18 |
| 38 | 18 |
| 39 | 18 |
| 40 | 18 |
| 41 | 19 |
| 42 | 19 |
| 44 | 19 |
| 43 | 19 |
| 45 | 20 |
| 46 | 20 |
| 47 | 20 |
| КОНТАКТЫ | 21 |
| Контактная информация | 21 |
| Телефоны | 21 |
| Время работы | 21 |
| Адрес | 21 |

ХАРАКТЕРИСТИКИ

Обзор

Bayliners have a reputation of being light, nimble, and practically designed. "Pier Pressure," is no exception, and is lightly used having spent its life on the Lower Chesapeake Bay. With a single fuel-injected Mercruiser 454, reliability and speed were in mind for this spacious express cruiser. With several recent upgrades, this Ciera will keep you dry with its 2-year old fully re-designed enclosure that closes in the whole cockpit. 2019 saw a major overhaul of the engine and its components. Lots of "bulletproofing," was done such as tuneups, new hoses, hydraulic lines, bellows, and seals. It's ready to be cruised! Drinks for 8, dinner for 6, and sleeps 4!

Основная информация

Тип судна: Cruising Yacht

Модельный год: 2000

Год постройки: 2000

Страна: United States

Размеры

Длина общая: 28' 0" (8.53m)

Ширина: 9' 10" (3.00m)

Макс. осадка: 2' 8" (0.81m)

Скорость, вместимость и масса

Крейс. скорость: 24 Kts. (28 MPH)

Макс. скорость: 29 Kts. (33 MPH)

Вместимость воды: 33 Gallons

Вместимость сточного бака: 20 Gallons

Объем топливного бака: 102 Gallons

Размещение

Всего кают: 1

Всего ком. состава: 1

Корпус и палуба

Материал корпуса: Fiberglass

Информация о двигателе

Двигатели: 1

Производитель: Mercruiser

Модель: 7.4 MPI

Тип двигателя: I/O

Тип топлива: Gas/Petrol

ПОДРОБНОЕ ОПИСАНИЕ

MAIN DESCRIPTION

Bayliners have a reputation of being light, nimble, and practically designed. "Pier Pressure," is no exception, and is lightly used having spent its life on the Lower Chesapeake Bay. With a single fuel-injected Mercruiser 454, reliability and speed were in mind for this spacious express cruiser. With several recent upgrades, this Ciera will keep you dry with its 2-year old fully re-designed enclosure that closes in the whole cockpit. 2019 saw a major overhaul of the engine and its components. Lots of "bulletproofing," was done such as tuneups, new hoses, hydraulic lines, bellows, and seals. It's ready to be cruised! Drinks for 8, dinner for 6, and sleeps 4!

2000 BAYLINER CIERA 2855 WALKTHROUGH

Boarding from the swim platform, the entry door is to starboard which leads you to the aft cockpit. There is a forward-facing fold down style seat in the aft, which is directly over the engine room hatch. Directly in front is a swingback seat located to port, to the left of the helm. There is a half-u seat which wraps from the entry door to the swingback seat which allows a great view. The helm is located to starboard, and has a large comfortable seat and a great view of the boat from a docking perspective. Left of the helm is the entryway which is located both amid and athwartships. A few easy steps down brings you into the cozy main salon and galley. Galley located to port, and salon seating to starboard, food for guests doesn't have far to travel when it leaves the two-burner stove. There are several storage compartments located throughout the boat's common area/galley. Aft of the galley is the boat's guest stateroom, located to starboard. It offers restful sleep for a couple, and is very comfortable. The boat's electric panel is located ensuite. Located to starboard is the boat's head. It has a newer seawater flush head located to left, a sink and faucet to right, and a wet-head style shower is located above. The owner's berth in amidships forward, and offers a spacious full-beam sleeping area with privacy curtain.

2000 BAYLINER CIERA 2855 COCKPIT/HELM

Ample seating aft, starboard, and amidships
Storage blow helm, and under seating
Fiberglass cockpit and helm sole with synthetic teak material covers
Full 360-view from all seats
Concise helm
Single engine controls
Onboard kill-switches
Factory engine gauges
Lowrance HDS 7
Chartplotter
HawkEye depthsounder
Standard Horizon VHF
Engine access aft amidships

2000 BAYLINER CIERA 2855 HULL/TOPSIDES/GROUND TACK

Factory gelcoat
Factory nonskid on side and foredecks
Bottom Painted
Stainless bowrail
Cleats aft, mid, and forward
Portlights offering natural light in bow (owners berth), and amidship (main salon)
(3) opening hatches on foredeck
12 Lb Danforth anchor
150' of anchor line with small amount of

chain

2000 BAYLINER CIERA 2855 ENGINE/SYSTEMS/ELECTRONIC

Mercruiser MPI 7.4L motor 437 Hours I/O (2) Bilge Pumps Automatic Floats Kuuma 6 Gallon hot water heater Freshwater pump Concise AC/DC panel Shorepower connections to port (2) 30 A Cords 12000 BTU marine A/C unit (1 zone) Saltwater circulation pump Fire detection system Fire detectors Carbon monoxide detectors USCG approved extinguishers Med-Kit (USCG app'd) Lowrance HDS 7 Chartplotter HawkEye Depth Sounder Standard Horizon Fuel Flow Meter Standard Horizon Eclipse VHF radio

2000 BAYLINER CIERA 2855 INTERIOR

Master stateroom forward V-Style Queen Privacy Curtain Cozy salon amidships with settee/berth offset to starboard Galley to port Norcold Refrigerator 2-Burner stove Generous storage throughout galley Guest stateroom aft and offset to starboard Full/Queen aft berth Head is offset to starboard Wet head (No separate shower stall) Manual marine head

DISCLAIMER

The Company offers the details of this vessel in good faith but cannot guarantee or warrant the accuracy of this information nor warrant the condition of the vessel. A buyer should instruct his agents, or his surveyors, to investigate such details as the buyer desires validated. This vessel is offered subject to prior sale, price change, or withdrawal without notice.

Исключения

При продаже яхты исключаются личные вещи владельца.

Отказ от ответственности

Компания предоставляет описание судна или яхты добросовестно, но не может гарантировать точность этой информации, а также не ручается за техническое состояние. Покупатель должен проинструктировать своих агентов или оценщиков исследовать представленную информацию более подробно, по собственному желанию. Продажа судна или яхты, изменение цены или снятие с продажи будет происходить без предварительного уведомления.

ФОТОГРАФИИ

1



2



3



4



5



6



7



8 (2)



8



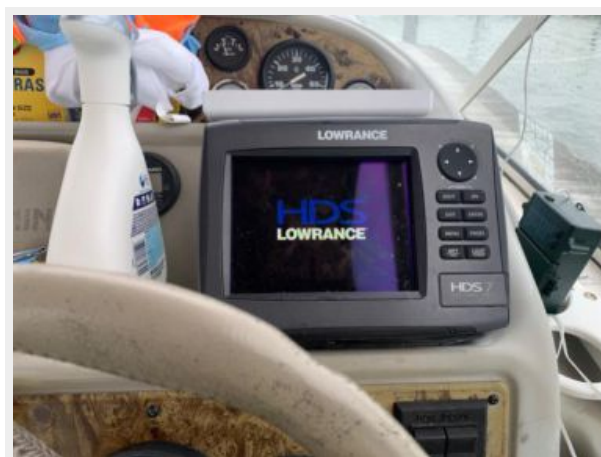
9



10



11



12



13



14



15



16



17



18



19



20



21



22



22(3)



23



24



25



26



27



28



29



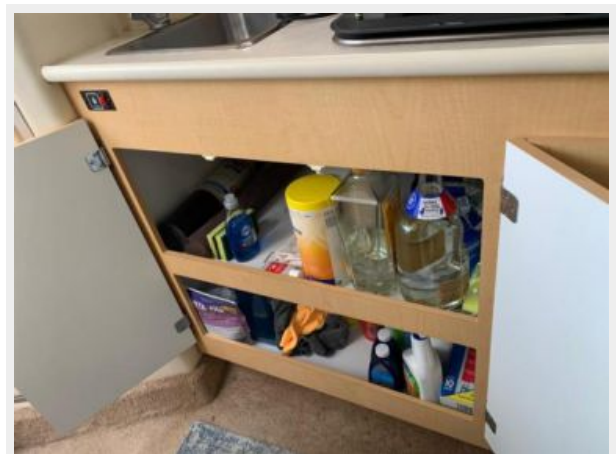
30



31



32



33



34



36



35



37



38



39



40



41



42



43



44



45



46



47



КОНТАКТЫ

Андрей Шестаков (Andrey Shestakov) – ведущий яхтенный брокер отдела продаж яхт и судов компании Shestakov Yacht Sales Inc. Официальный представитель Shestakov Yacht Sales Inc. для русскоговорящих клиентов в центральном офисе компании в Майами/Форт Лодердейл/Флорида/США.

Контактная информация

Email: andrey@shestakovyachtsales.com

Web: shestakovyachtsales.com

Телефоны

Краснодарский край: **+7(918)465-66-44**

США, Майами, Флорида: **+1(954)274-4435**

Время работы

Понедельник – Суббота: **9:00 - 21:00**
EDT

Воскресенье: **Закрито**

Адрес



Harbour Towne Marina, 850 NE 3rd St,
STE 213, Dania, FL 33004