

WINDRIFT — MORGAN



Builder: MORGAN

Year Built: 1981

Model: Performance Sailboat

Price: PRICE ON APPLICATION

Location: United States

LOA: 41' 0" (12.50m)

Beam: 13' 9" (4.19m)

Max Draft: 5' 2" (1.57m)

Cruise Speed: 7 Kts. (8 MPH)

Our experienced yacht broker, Andrey Shestakov, will help you choose and buy a yacht that best suits your needs **Windrift — MORGAN** from our catalogue. Presently, at Shestakov Yacht Sales Inc., we have a wide variety of yachts available on our sale's list. We also work in close contact with all the big yacht manufacturers from all over the world.

If you would like to buy a yacht **Windrift — MORGAN** or would like help answering any questions concerning purchasing, selling or chartering a yacht, please call **+1(954)274-4435**

TABLE OF CONTENTS

TABLE OF CONTENTS	2
SPECIFICATIONS	4
Overview	4
Basic Information	4
Dimensions	4
Speed, Capacities and Weight	4
Accommodations	5
Hull and Deck Information	5
Engine Information	5
DETAILED INFORMATION	6
Overview	6
Exclusions	6
Disclaimer	6
PHOTOS	8
2	8
3	8
4	8
5	8
7	8
6	8
8	9
9	9
10	9
11	9
12	9
13	9
14	10
15	10

16	10
17	10
18	10
19	10
20	11
21	11
22	11
23	11
25	11
24	11
CONTACTS	12
Contact details	12
Telephones	12
Office hours	12
Address	12

SPECIFICATIONS

Overview

Windrift is a nicely updated example of the classic Morgan Out Island 41. She is the "Out Island 416" version, with a taller, 2 spreader main mast, giving improved performance on her extremely spacious layout. She makes a perfect live-aboard and long range cruiser. Interior professionally redone to a high standard. Standing Rigging replaced 2012 - along with major engine service including new mounts. All running rigging updated in 2016 New DC refrigeration - 2015 Additional 50amp power supply for year-round live aboard capability Entire Hull insulated for live-aboard comfort (NO condensation!)

Basic Information

Category: Performance Sailboat

Sub Category: Cruising Sailboat

Model Year: 1981

Year Built: 1981

Country: United States

Dimensions

LOA: 41' 0" (12.50m)

Beam: 13' 9" (4.19m)

Max Draft: 5' 2" (1.57m)

Clearance: 60' 0" (18.29m)

MFG Length: 41' 0" (12.50m)

Speed, Capacities and Weight

Cruise Speed: 7 Kts. (8 MPH)

Water Capacity: 171 Gallons

Holding Tank: 32 Gallons

Fuel Capacity: 138 Gallons

Accommodations

Total Cabins: 2

Total Berths: 2

Total Heads: 2

Hull and Deck Information

Hull Material: Fiberglass

Engine Information

Engines: 1

Manufacturer: Perkins

Model: 4.154

Engine Type: Inboard

Fuel Type: Diesel

DETAILED INFORMATION

Overview

Accommodations Sleeps 7 Most forward is chain locker followed by a Spacious forward Stateroom with large Vee berth, overhead storage to either side plus 6 storage drawers underneath. Aft to port is double door hanging locker and to starboard is head with private door entry and vanity. Starboard side salon has a large "L" shaped convertible dinette followed by "L" shaped galley. Portside salon has settee followed by walk thru with outboard side freezer and storage locker. Inboard side of walk thru has a storage locker, electrical distribution panel and engine access doors. Master stateroom has an awthartship double berth, portside double door hanging locker and to starboard a head compartment has been converted to a stand-alone shower with 6'3" headroom .2 companionway doors, 3 deck hatches and 16 opening ports provide excellent ventilation. Rig Windrift is equipped with a split rig for ease of balancing her helm. Her genoa roller and leisure furl boom make shorthanded sailing a breeze. Mainsheet and jib sheets led to center cockpit which remains dry and comfortable even in a blow. Large primary self tailing, 2 speed winches Main with double spreaders Chainplates on topsides for ease of maintenance Mizzen mast Profurl roller furler Leisure furl boom 135 Genoa Mainsail Mizzen sail Electronics

GPS Radar VHF radio Compass Battery charger 1 10V/12V Heart interface inverter

Deck

Flag blue awl grip topsides Stainless bow pulpit with double lifelines and fender holsters Double bow roller on teak bowsprit CQR anchor and rode Danforth anchor and rode 3 opening deck hatches 10 ports 3 solar fans Teak grab rails STS Destroyer style wheel Hydraulic Steering Tall dodger with side canvas surround 2 companionways Aft cabin deck; 4 ports 2 opening Mizzen mast Dinghy davits Magma grill

Exclusions

Owner's personal belongings.

Disclaimer

The Company offers the details of this vessel or yacht in good faith but cannot guarantee or warrant the accuracy of this information nor warrant the condition of the vessel. A buyer should instruct his representatives, agents, or his surveyors, to investigate such details as the buyer

desires validated. This vessel or yacht is offered subject to prior sale, price change, or withdrawal without notice.

PHOTOS

2



3



4



5



6



7



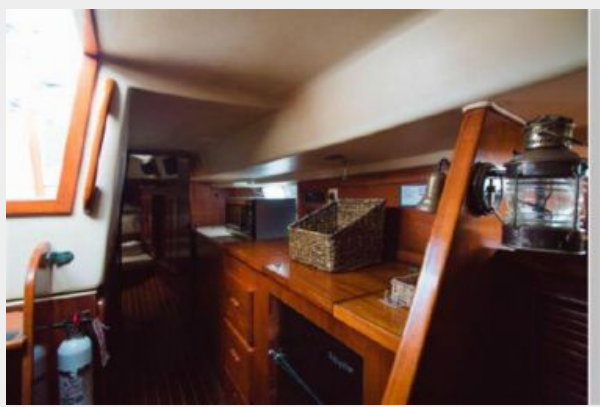
8



9



10



11



12



13



14



15



16



17



18



19



20



21



22



23



24



25



CONTACTS

Andrey Shestakov, leading yacht broker of the sales department of Shestakov Yacht Sales Inc. Shestakov Yacht Sales Inc., the official representative of the Miami/Fort Lauderdale FL headquarters.

Contact details

Email: andrey@shestakovyachtsales.com

Web: shestakovyachtsales.com/en/

Telephones

USA: +1(954)274-4435

Office hours

Monday – Saturday: **9:00 - 21:00** EDT

Sunday: **closed**

Address



Harbour Towne Marina, 850 NE 3rd St,
STE 213, Dania, FL 33004