

RISING TIDE II



Year Built: 2010

Model: Cruising Yacht

Price: PRICE ON APPLICATION

LOA: 78' (23.77m)

Beam: 18.16

Max Draft: 3' 6" (1.07m)

Max Speed: 30 Knots Kts. (35 MPH)

Our experienced yacht broker, Andrey Shestakov, will help you choose and buy a yacht that best suits your needs **Rising Tide II** — n/a from our catalogue. Presently, at Shestakov Yacht Sales Inc., we have a wide variety of yachts available on our sale's list. We also work in close contact with all the big yacht manufacturers from all over the world.

If you would like to buy a yacht **Rising Tide II** — n/a or would like help answering any questions concerning purchasing, selling or chartering a yacht, please call **+1(954)274-4435**

TABLE OF CONTENTS

TABLE OF CONTENTS	2
SPECIFICATIONS	3
Overview	3
Basic Information	4
Dimensions	4
Speed, Capacities and Weight	4
Accommodations	4
Hull and Deck Information	4
Engine Information	5
PHOTOS	6
CONTACTS	21
Contact details	21
Telephones	21
Office hours	21
Address	21

SPECIFICATIONS

Overview

One Owner, Two Boat Owner. All New Power Packages. 4 New Engines, 4 New Pod Drives, 4 New Engine Electronics Packages. All new out of the box installed by Volvo Corporate. 5 Year or 1000 hour bumper to bumper Warranties. The Power Packages have completed Sea Trials and Approval by Volvo. Approx 20 Hours

Hull #20 of the stunning LSX series. One of only 4 78's built, Rising Tide II was built with a flybridge and stabilizers unlike its 75 LSX predecessors. One Owner and maintained by a full time captain since birth, this American made Italian style beauty offers efficient speed, a quiet smooth ride, and spacious accommodations. The pods allow the engine room to be placed aft and the footprint of the engines is much smaller. This allows the living spaces to be larger and uninterrupted by the engine space.

There are four owner guest staterooms all with ensuite heads. The Master has a King and the three guests staterooms all have Queens and ensuite heads.

Rising Tide II has the Tropical Cool Package which upgrades to 10 Tons of Air Conditioning. That package also has Thinsulate Insulation throughout the main deck area and all main deck glass is Thermal E glass which is cool to the touch even in direct sunlight. There were also custom vents installed in the heads to make air circulation more efficient. If cool air is important to you, rest assured you will get it.

Rising Tide II also has a DAY HEAD in the aft salon which is quite rare on a boat of this size and style. It seems the designers magically created space you would not expect from the staterooms and heads, to overall storage.

The innovative design gives you the interior space of a 90 footer. The highest fixed clearance is just under 19 feet which gets you under 90% of ICW Bridges. The draft of under 4 feet gets you in marinas most boats of this size can't. She burns 60 GPH at 21 knots including the generator. Day Head! Tropical AC. Head turning looks... Compare that to others!

The owners have a new boat and do not need two boats. As an incentive, they are offering New Engines, New Drives and New Engine Electronics all with Extended 5 year Volvo Warranty. You can put the first hours on new engines.

Complete Logs Available aboard.

Basic Information

Category: Cruising Yacht

Sub Category: Express

Model Year: 2010

Year Built: 2010

Dimensions

LOA: 78' (23.77mm)

Beam: 18.16

Max Draft: 3' 6" (1.07mm)

Speed, Capacities and Weight

Max Speed: 30 Knots Kts. (35 MPH)

Water Capacity: 200 Gallons

Holding Tank: 100 Gal Gallons

Fuel Capacity: 830 Gal Gallons

Accommodations

Total Cabins: 4

Total Berths: 4

Sleeps: 8

Total Heads: 5

Crew Cabin: 2

Crew Berths: 2

Crew Heads: 1

Hull and Deck Information

Hull Material: Fiberglass

Hull Color: Light Silver

Hull Designer: Dick Lazzara

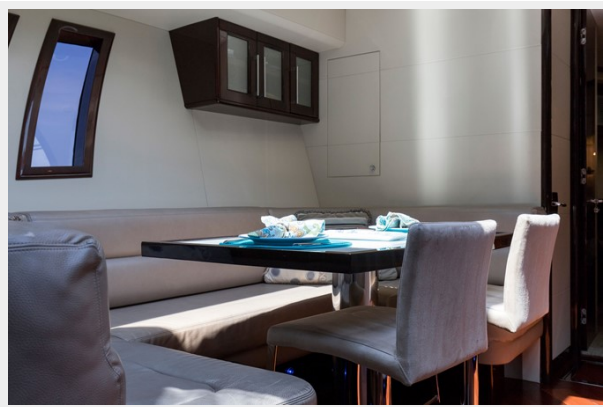
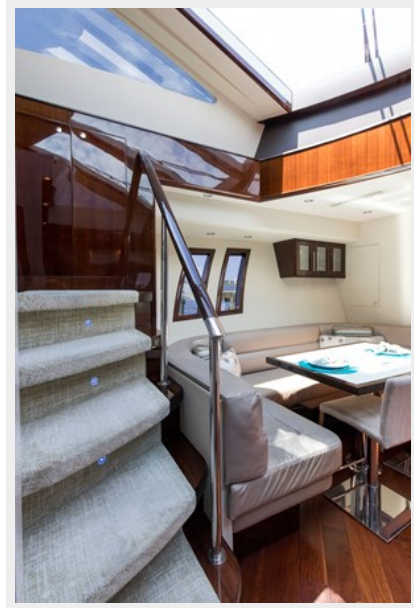
Engine Information

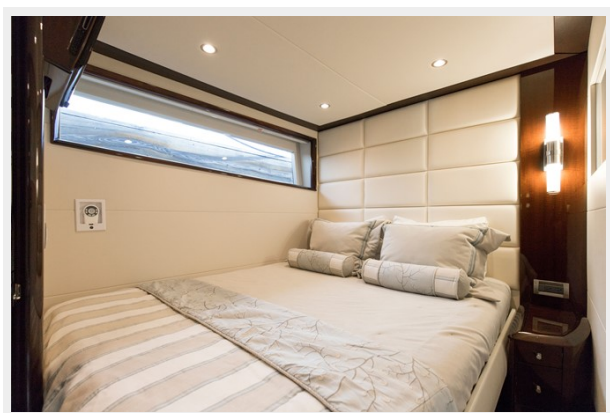
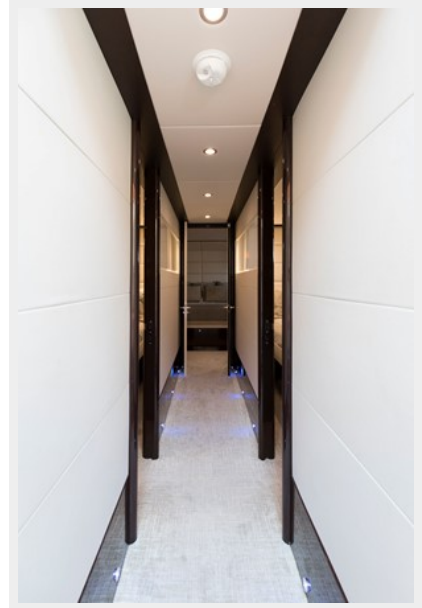
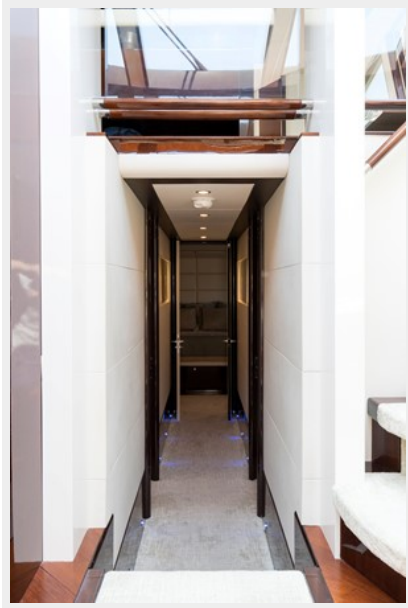
Engines: 4

Manufacturer: Volvo

Engine Type: Other

PHOTOS



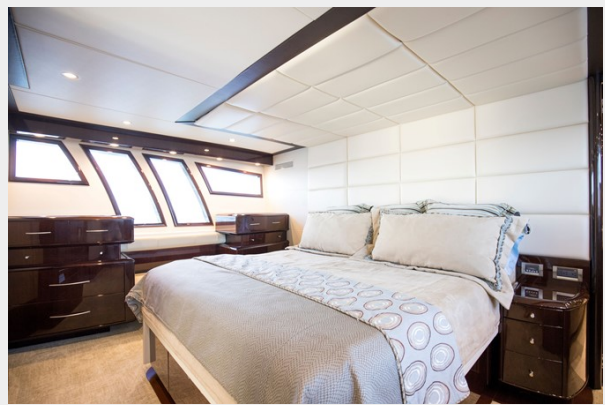
















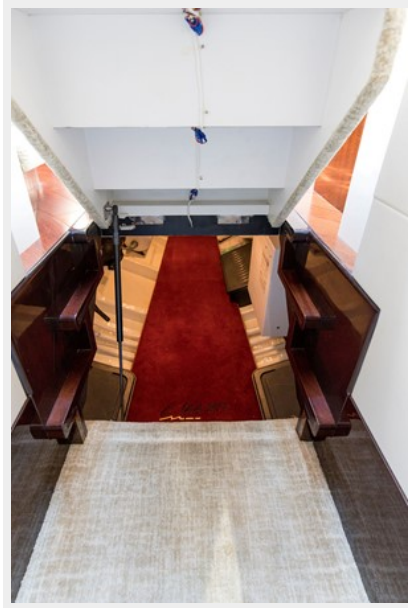












CONTACTS

Andrey Shestakov, leading yacht broker of the sales department of Shestakov Yacht Sales Inc. Shestakov Yacht Sales Inc., the official representative of the Miami/Fort Lauderdale FL headquarters.

Contact details

Email: andrey@shestakovyachtsales.com

Web: shestakovyachtsales.com/en/

Telephones

USA: +1(954)274-4435

Office hours

Monday – Saturday: **9:00 - 21:00** EDT

Sunday: **closed**

Address



Harbour Towne Marina, 850 NE 3rd St,
STE 213, Dania, FL 33004