

LUCKY — SUNSEEKER



Builder: [SUNSEEKER](#)

Year Built: 2004

Model: Motor Yacht

Price: PRICE ON APPLICATION

Location: Mexico

LOA: 75' 0" (22.86m)

Beam: 22' 10" (6.96m)

Max Draft: 5' 6" (1.68m)

Our experienced yacht broker, Andrey Shestakov, will help you choose and buy a yacht that best suits your needs **Lucky — SUNSEEKER** from our catalogue. Presently, at Shestakov Yacht Sales Inc., we have a wide variety of yachts available on our sale's list. We also work in close contact with all the big yacht manufacturers from all over the world.

If you would like to buy a yacht **Lucky — SUNSEEKER** or would like help answering any questions concerning purchasing, selling or chartering a yacht, please call **+1(954)274-4435**

TABLE OF CONTENTS

TABLE OF CONTENTS	2
SPECIFICATIONS	3
Overview	3
Basic Information	3
Dimensions	3
Speed, Capacities and Weight	3
Accommodations	3
Hull and Deck Information	4
Engine Information	4
DETAILED INFORMATION	5
Details and Features	5
Exclusions	8
Disclaimer	8
PHOTOS	9
CONTACTS	26
Contact details	26
Telephones	26
Office hours	26
Address	26

SPECIFICATIONS

Overview

This example of the Sunseeker M/Y 75 Flybridge Motor Yacht model, was voted as one of the top five Best Designed Yachts in the world. It is luxuriously equipped with an exceptional spacious 4 cabin layout serving 8 guests with 2 crew. Very well equipped with many recent upgrades in the last 2 years. Boat has never been in charter, only private use.

- NEW CARPET
- FULL ENGINE SERVICE
- NEW TEAK THROUGHOUT
- SALON BOSE SURROUND SPEAKERS
- ELECTRONICS

Basic Information

Category: Motor Yacht

Model Year: 2004

Year Built: 2004

Country: Mexico

Dimensions

LOA: 75' 0" (22.86m)

Beam: 22' 10" (6.96m)

Max Draft: 5' 6" (1.68m)

Speed, Capacities and Weight

Water Capacity: 293 Gallons

Fuel Capacity: 1453 Gallons

Accommodations

Total Cabins: 4

Total Berths: 6

Total Heads: 4

Hull and Deck Information

Hull Material: Fiberglass

Engine Information

Engines: 2

Manufacturer: MAN

Model: D2842 LE409 V12

Engine Type: Inboard

Fuel Type: Diesel

DETAILED INFORMATION

Details and Features

Salon

Large formal dining area in upper salon
 Bose Surround system in main salon
 Custom carpet runners in main salon
 6-Disc CD player in salon with remote
 Two helm seats for lower helm
 HD SAT television
 Drinks cabinet
 Stainless steel sliding cockpit doors to aft cockpit
 Low-level lights
 24v Main control panel (AC/DC)
 Generator controls
 Double AC sockets
 Scatter cushions
 Satin Cherry Woodwork
 Air conditioning
 Custom ceilings, features and lighting
 LED lighting

Galley

Electric refrigerator and freezer
 4-ring ceramic hob
 Microwave/Grill/Oven
 Stainless steel sink
 Hot and cold water
 Cupboard and drawer, stowage below
 2 x double AC sockets
 Fire extinguisher
 Stove fan
 First aid kit

Master Stateroom

Dimmer switches on lights
 Cherry wood
 Headliners are custom design
 Custom Blinds 42"
 Television
 Double berth
 Storage beneath
 Drawers in base-end
 Dressing table with mirror and stool
 Air conditioning
 Halogen overhead lights 24v
 2 x reading lights 24v
 2 x opening portholes with mosquito screens and curtains
 4 x large fixed side windows
 Double AC socket
 Radio/CD/DVD player
 Door to ensuite bathroom
 Door to ensuite walk in wardrobe

Master Ensuite

Vacuum toilet
 Washbasin
 Taps and accessories
 Large shower
 Extractor fan
 Air conditioning outlet
 Mirror
 Toothbrush and glass holder
 Towel ring
 Halogen overhead light 24v
 Opening porthole with mosquito screen and blind
 Shaver socket 240/110v
 Shower doors have polished frames

VIP Stateroom

Double berth with storage beneath and drawers in base-end
 TV/Radio/CD/DVD
 Extra large closet
 Walk in wardrobe behind closed door
 Dressing table with stool
 Overhead lockers
 Air conditioning
 Flatscreen television
 Halogen overhead lights 24v
 2 x Reading lights 24v
 2 x opening portholes w/screens and curtains
 Double AC socket
 Fitted carpet
 Door to Ensuite toilet/shower

VIP Ensuite

Tecma toilet
 Washbasin
 Taps and accessories
 Soap dispenser
 Separate shower compartment
 Air conditioning outlet
 Extractor fan
 Mirrored vanity unit
 Shelved cupboard
 Seat in shower
 Toothbrush and glass holder
 Towel ring
 Halogen overhead light 24v
 Opening porthole w/screen and blind
 Shaver socket 110v

Guest Stateroom

Single bunk outboard w/counter top and storage inboard Under berth stowage Bedside unit with drawer 2 x reading lights 24v Full hanging wardrobe Air Conditioning Halogen overhead lights 24v Opening porthole with mosquito screen and curtains Double AC socket Overhead lockers Flat screen television

Guest Head

Vacuum toilet Washbasin Taps and accessories Separate shower compartment Air conditioning outlet Extractor fan Mirrored vanity unit Shelved cupboard Toothbrush and glass holder Towel ring Halogen overhead light 24v Opening porthole with mosquito screen and blind Shaver socket 240/110v

Guest Stateroom II

2 x single berths Under berth stowage Bedside unit with drawer 2 x reading lights Full hanging wardrobe Air conditioning Halogen overhead lights 24v Opening porthole with mosquito screen and curtains Double AC Socket Door to ensuite shower room Overhead lockers Flat screen television Shower door shave polished frames

Guest Head II

Vacuum toilet Washbasin Taps and accessories Separate shower compartment Extractor fan Air conditioning outlet Mirrored vanity unit Shelved cupboard Toothbrush and glass holder Towel ring Halogen overhead lights 24v Opening porthole with mosquito screen and blind Shaver socket 240/110v

Crew Cabin

Entrance door from the stern Two berths Wardrobe TV/Radio/CD Halogen overhead lighting 24v Reading light 24v AC socket Washbasin and shower Mirrored vanity unit Opening porthole with mosquito screen Toilet Shaver point 110v

Deck

Fittings all in stainless steel 8 x deck cleats Pulpit and cockpit rails Stainless steel fendering with rubber insert Stainless steel bow roller with anchor stop Stainless steel bow plate Delta anchor and 60m chain (galvanized) Electric winch and capstan with deck, cockpit and flybridge controls Chain locker fender stowage Curved direct glazed safety glass windscreen Pantograph windscreen wipers 24v and washers Fuel fillers port and starboard Lumishore Lights w/Controller-water filler IMCO navigation lights Remote spotlight 24v Ensign staff and socket Fender tie bar under anchor locker lid SAT domes and radar Fresh water deck wash New Teak decking of flybridge, cockpit and walkways Side mount gangway (boarding stairs) mounts on both sides

Cockpit

Teak floorSelf-drainingStairs to flybridgeStern seatingSide rope lockersStern safety doorsEngine room access hatch2 x stern capstan winches 24v and fairleadsCockpit speakersOverhead cockpit lights 24vLow-level courtesy lights in aft cockpit 24vLow-level courtesy lights on side decks 24v

Aft Deck

Teak-laid hydraulic lifting bathing platformHot and cold swimming showerFresh-water marina connectionDockside AC shore power connectionStainless steel swimming ladderLazarette stowage for fenders

Flybridge & Helm Station

Duplicate engine controls and instrumentationDuplicate autopilot controlsCompass1 helm custom seatsTeak flooringTwin Sanshin spotlightsKahlenberg triple air horns - StainlessKVHSatellite/phone systemsSunbrella cushions on all exterior seatsCovers for upper and lower seats, tables, bridge bar and dashStairs to cockpitSelf drainingAcrylic deflecting spray screenHydraulic steeringFiberglass Table with coverChrome mast, custom Black antennas, custom domesCustom steering wheel8-person life raft and EPIRBExtended bimini top in dark Blue canvasFlybridge Tonneau coverStainless steel guard rails and grab railsGlass holdersWetbar with hot and cold water, ice maker, ceramic griddle and refrigeratorRadio/CD remote controlCockpit speakersLow-level flybridge lighting 24vLights under radar arch 24vSteering indicatorTrim tab controlRadar and Chart plotter

Engine Room

Diesel prime pumpsFire and bilge flood monitoring alarm system (8-zone)Inverter for audio/visual equipmentOil change system plus fuel priming systemTransformer with low voltage and surge protectorWatermaker-1600 gal./day with remote control in salonCustom workbench over starboard generatorSeparate fuel filters/water separatorsAutomatic fire extinguisherEngine room and forward bilge flood alarms2 x Automatic bilge pumps2 x Automatic flood pumps2 x Extractor fansManual bilge pumpAdditional lights and plugs in all bilgesSoundproofing throughout engine roomFuel tanks with electric sending unit

Electrical

2 Generators with underwater silent exhaust and sound boxAC dockside connectionGalvanic isolator24v and 12v DC electrical system with full circuit breaker protection4 x Engine batteries 24v circuit4 Inverter Batteries4 x Domestic batteries 24v circuit2 x Generator batteries 1 2v circuitAlternator split charging systemRemote battery switches controlled from locker in cockpitBattery charger for 24v circuitsBattery charger for 12v circuitWater heaterAC sockets throughout the boat24v hand light and cableMagnet Inverter

(Show to: **Public**)Systems

Hydraulic power steering engine driven pumpTecma toilet systemToilet waste holding tank with monitoring systemAluminum fresh-water tank with electric sending unit24v fresh-water pressure

systemHot water tankBow & Stern thrustersWatermaker

Exclusions

Owner's personal belongings.

Disclaimer

The Company offers the details of this vessel or yacht in good faith but cannot guarantee or warrant the accuracy of this information nor warrant the condition of the vessel. A buyer should instruct his representatives, agents, or his surveyors, to investigate such details as the buyer desires validated. This vessel or yacht is offered subject to prior sale, price change, or withdrawal without notice.

PHOTOS



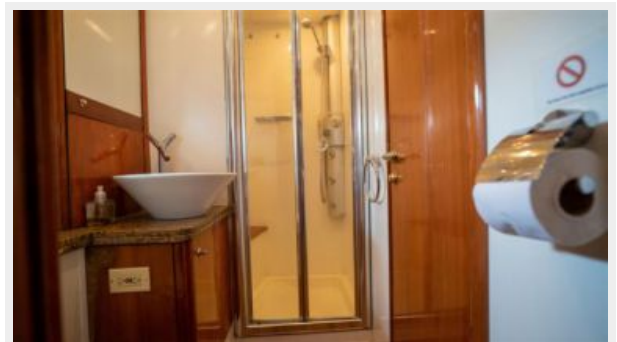
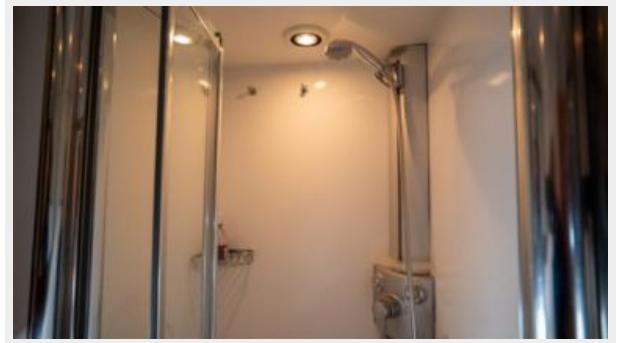
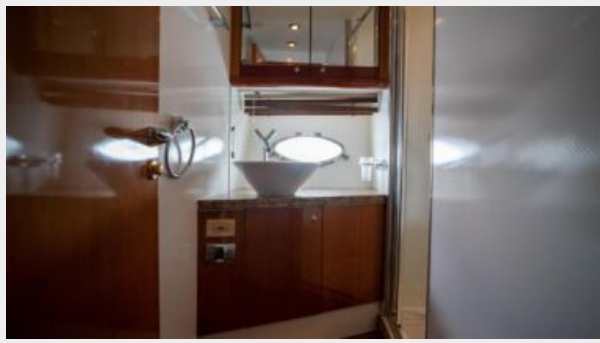






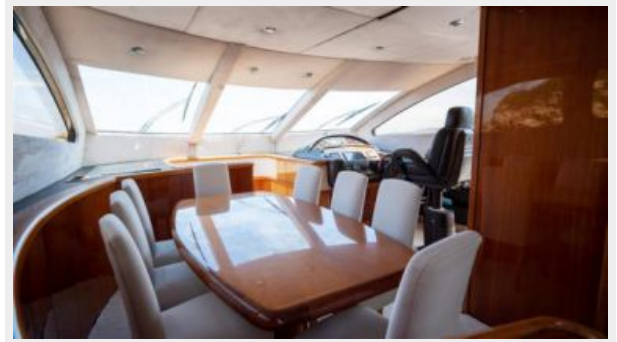




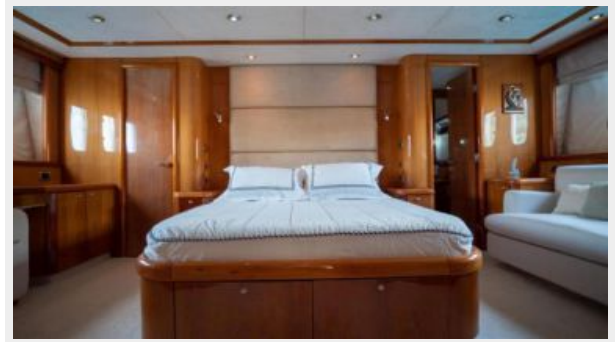
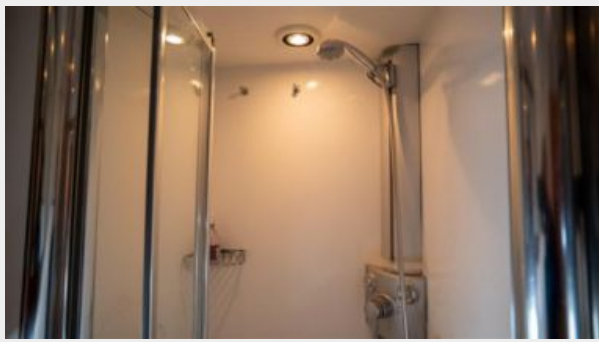


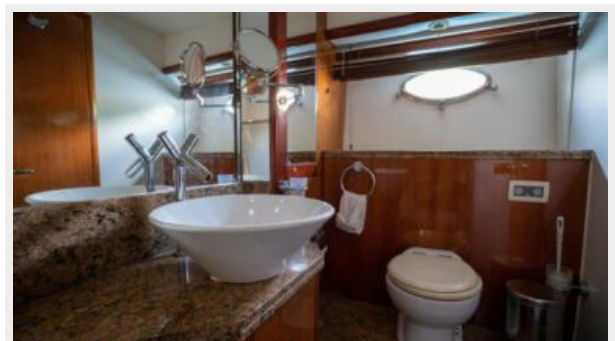




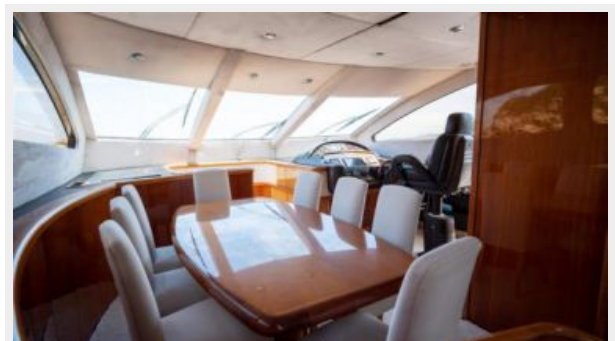




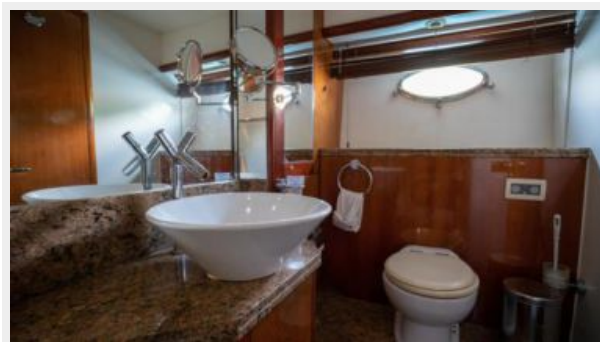
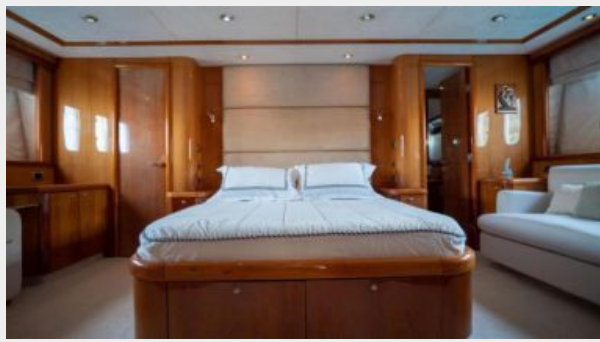












CONTACTS

Andrey Shestakov, leading yacht broker of the sales department of Shestakov Yacht Sales Inc. Shestakov Yacht Sales Inc., the official representative of the Miami/Fort Lauderdale FL headquarters.

Contact details

Email: andrey@shestakovyachtsales.com

Web: shestakovyachtsales.com/en/

Telephones

USA: +1(954)274-4435

Office hours

Monday – Saturday: **9:00 - 21:00** EDT

Sunday: **closed**

Address



Harbour Towne Marina, 850 NE 3rd St,
STE 213, Dania, FL 33004