

## LUPO DI MARE — MONTE CARLO YACHTS



**Builder:** MONTE CARLO YACHTS

**Year Built:** 2016

**Model:** Motor Yacht

**Price:** PRICE ON APPLICATION

**Location:** Mexico

**LOA:** 76' 0" (23.16m)

**Beam:** 18' 5" (5.61m)

**Max Draft:** 5' 5" (1.65m)

Our experienced yacht broker, Andrey Shestakov, will help you choose and buy a yacht that best suits your needs **Lupo Di Mare — MONTE CARLO YACHTS** from our catalogue. Presently, at **Shestakov Yacht Sales Inc.**, we have a wide variety of yachts available on our sale's list. We also work in close contact with all the big yacht manufacturers from all over the world.

If you would like to buy a yacht **Lupo Di Mare — MONTE CARLO YACHTS** or would like help answering any questions concerning purchasing, selling or chartering a yacht, please call **+1(954)274-4435**

# TABLE OF CONTENTS

---

TABLE OF CONTENTS	2
SPECIFICATIONS	4
Overview	4
Basic Information	4
Dimensions	4
Speed, Capacities and Weight	5
Accommodations	5
Hull and Deck Information	5
Engine Information	5
DETAILED INFORMATION	6
Yacht Build and Layout	6
Machinery & Mechanicals	6
Stern Aft and Cockpit	6
Aft Cockpit	7
Main Deck	7
Galley	7
Salon	8
Pilothouse	8
Flybridge	9
Bow	10
Master Stateroom	11
Ensuite Master Walk-In Closet	12
Ensuite Master Head	12
VIP Stateroom	12
Ensuite VIP Bathroom	13
Guest Staterooms	13
Ensuite Port Guest Bathroom	13
Ensuite Starboard Guest Bathroom	14

---

Crew Area	14
Crew Bathroom	15
Hull Design	15
Engine and Propulsion Systems	15
Decks and Deck Equipment	16
Shore Power	16
Ground Equipment	16
Generators	17
Exclusions	17
Disclaimer	17
PHOTOS	18
CONTACTS	34
Contact details	34
Telephones	34
Office hours	34
Address	34

# SPECIFICATIONS

---

## Overview

---

This 2016 MCY76 is a beautiful, low-hour, 4-stateroom Motoryacht, widely considered one of the most elegant vessels in her class. She's equipped with many features found in much larger yachts. Her fit and finishes are extraordinary, her engineering is top-notch, and her 2 upgraded Seakeepers provide a stable and smooth ride.

### Highlights Include:

- LLC Owned
- 1200HP MAN Engines (Only 650 Hours)
- Two Generators (every 23 KWs)
- Two Seakeepers #9's
- 4/4 Layout + Hideaway Crew (Full Beam Aft Master)
- Ample Bow Integrated Seating Area
- Carbon Fiber Hardtop (Integrated Retractable Sunroof)
- Hydraulic Swim Platform
- Bow & Stern Thruster
- Well Maintained

## Basic Information

---

**Category:** Motor Yacht

**Model Year:** 2016

**Year Built:** 2016

**Country:** Mexico

**Fly Bridge:** Yes

**Cockpit:** Yes

## Dimensions

---

**LOA:** 76' 0" (23.16m)

**Beam:** 18' 5" (5.61m)

**Max Draft:** 5' 5" (1.65m)

**Clearance:** 16' 0" (4.88m)

---

## Speed, Capacities and Weight

---

**Water Capacity:** 264 Gallons

**Holding Tank:** 93 Gallons

**Fuel Capacity:** 1295 Gallons

---

## Accommodations

---

**Total Cabins:** 4

**Total Berths:** 4

**Total Heads:** 4

---

## Hull and Deck Information

---

**Hull Material:** Fiberglass

**Hull Configuration:** Deep Vee

---

## Engine Information

---

**Engines:** 2

**Manufacturer:** MAN

**Model:** V81200 HP

**Engine Type:** Inboard

**Fuel Type:** Diesel

---

# DETAILED INFORMATION

---

## Yacht Build and Layout

---

- Premium materials from our Kevlar enforced metallic colored painted hulls, head to toe thick teak surfaces, and a huge tee top totally made of Carbon fiber.
- Euro-luxurious outdoor living throughout our award-winning designs of our bow areas, aft decks, and sky-lounge flybridges.
- Four cabin staterooms each with its own private en-suite bathrooms (heads) Two bed crew quarters with a shared bathroom with crew Mess.

## Machinery & Mechanicals

---

- Many large yacht features include diamond plate aluminum decking and stainless handrails with a walk-around space at the motors. Twin 23kW generators.
- Easy access to electrical systems and panels with good access to service areas including through hulls.
- The aft storage area at the door gives the crew space to stow tools and docking equipment.
- 230V AC Power sources

## Stern Aft and Cockpit

---

Walking up to this yacht you notice her high freeboard and easy access aboard. An extra-large hydraulic swim platform (600kg capacity) with a large yacht-like engine room door.

The passerelle (gangway) extends out of the aft steps to provide easy access aboard from the bathing platform.

### Bathing Platform Features:

- Hydraulic up/down lifting system 600 kg max loading capacity
- Platform size suitable for a 3.85 m tender length
- Platform teak floor and teak grating
- Stainless steel fender bar with rubber insert reinforcement
- Foldable bathing ladder (with storage supports into transom lazarette)
- Transom lazarette with hydraulically operated door
- Stern stairs to the aft cockpit, with stainless steel handrails and hatches for shore power connection and stern platform shower (cold and hot supply)
- Electro-hydraulic concealed stainless steel gangway, with teak grating, automatic stanchions and courtesy LED lights

---

## Aft Cockpit

---

- Tall ceilings with coverage all the way aft to the sofa. You will notice there are no pillars needed to hold up the back of the deck ceiling giving an unobstructed view.
- Full sofa with extra deep cushions and thigh bolsters carried well below the knee. Two side settees to port and starboard give more seating options.
- The teak table provides dining for up to 8. Its convertible configuration allows it to be lowered as a coffee table and also to be used in a chaise lounge configuration.
- Teak handrails on bulwark with stainless steel handrails.
- Teak floor with perimeter courtesy lights.
- Stainless steel and tempered glass fashion plates for lateral protection of the cockpit, with courtesy lights
- Saloon door in stainless steel and tempered glass with a special system for complete folding of the 3 door panels on the starboard side.
- Stainless steel and Plexiglas gates to stern staircases.
- Stern sofa with storage.
- 2 sofas with storage on port and starboard sides.
- 2 electric adjustable height table legs with foldable teak table for 8 people.
- LED power and courtesy lights on the ceiling.
- Flush deck hatch for engine room emergency exit.
- Covers for table and sofas.

---

## Main Deck

---

- Glass Doors across the entire back of the deckhouse open up into the spacious main deck.
- Stainless Steel framed Opacmare doors accordion open across the back to give a complete alfresco space for the galley, dinette, and saloon.
- A totally open space; you notice there are no bulkheads or walls from the windshield all the way aft. Extra-large windows keep the space open to the outside with automated blinds for privacy.
- The teak floors provide comfort and security. Leather tiles in the saloon floor with leather in tabletops and wall accents.
- Monte Carlo Yachts patented design includes a full aluminum framework allowing for lighter weight and greatly increased rigidity providing additional space and sound isolation from the engines and generators.

---

## Galley

---

The galley is to port with a finely appointed settee to starboard. Stone countertops provide ample space with all Miele appliances including a full dishwasher. Down below (to aft) is a crew prep area including additional galley storage, refrigerator, freezer, and counter space.

- The settee sofa is automated covering the crew entrance.
- Galley on the stern (portside)
- Galley working top in marble with cooking top and sink
- Storage under cooking top and sink
- Storage shelves above the sink
- Dishware and cutlery storage
- Hanging furniture and cabinets

### **Galley Equipment includes:**

- Four induction hobs Miele
- Extractor Miele
- Combined oven Miele
- 130 l fridge (Indel Webasto or equivalent quality standard)
- 65 l freezer (Indel Webasto or equivalent quality standard)
- Dishwasher Miele

## **Salon**

---

All on one level from the aft deck to the helm station, space continues forward to the saloon. An extra large and deep U-shaped sofa provides a warm area for relaxing when it's time to come electronic lift. Global Satellite Broadband Dish is on board to stay connected anywhere.

- Foldable table (made in wood and leather with stainless steel legs)
- Electric sliding sofa to open and close the interior access to the technical area and crew quarters
- Two sofas for the living area (one big on the port side and one storage pouf on the starboard side)
- Two sofa tables for the living area
- TV cabinet with up/down lifting mechanism for a 40" LCD TV
- TV Satellite
- KVH Satellite dome
- Direct LED lights on ceilings
- Electric Venetians blind on both port and starboard sides, covered in microfiber technical fabric
- Electrical panels on the starboard side
- Stairs to lower deck in leather and teak
- Stairs to the technical area and crew quarters in teak
- Cabinet with drawers on the starboard side next to the main entrance
- Direct LED lights on ceilings

## **Pilothouse**

---



The pilothouse area has the centerline helm with great visibility out the windshield. The glass wraps around, continuing the visibility. The side entry door is to starboard—twin automated helm seats wrapped in supple leather.

- Twin 19" Boning Multifunction displays provide systems monitoring and controls while also providing the Raymarine GPS Screens. Twin MAN displays Raymarine Autopilot and Raymarine
- i70 MFD. MAN electronic engine controls and joystick with a bow and stern thruster controls all at the ready.
- Instrument console in leather with teak wood
- Raymarine GS Series with 19" Displays
- Semi-automatic electric watertight door to access sideways
- Chart top in leather on the port side of the wheelhouse
- Helm seats in leather (2 seats), with up/down and backrest electric control and integrated joystick for control of monitoring system
- Direct LED lights on ceilings (day and night navigation lights)
- The pilot station includes, further to the instrumentation as per paragraph.9:
- Steering wheel in leather
- Main engines and reversing gear levers
- Key switches for port and starboard engines
- Horn, windscreen wipers, rudder pump, anchor winch and chain counter, searchlight, fire extinguisher controls
- Panel with warning and alarms for bilge pumps

## Flybridge

---

One of the largest fly-bridges in its class with almost total hardtop coverage. Ultra-lightweight Carbon Fiber top allows for full coverage and hardly any added weight to the center of gravity. Signature Monte Carlo Yachts design carries the flybridge to the width of the yacht; not just the width of the deckhouse providing much more space than a conventional design.

The Carbon Fiber hardtop covers more area and offers a large, fully opening skylight.

Extra-wide seating with deep bolsters. Storage is provided under all seating and cushion areas.

High-low tables are interchangeable with teak coffee tables or teak dining tables; You can easily seat 8 for dinner on the bridge.

A full entertainment area complete with a wet bar, grill, fridge, and ice maker. The open balcony aft is a nice space remiss of covering for sunning.

- External staircase with teak steps
- Teak floor with integrated flush mounted courtesy lights
- Lights and perimeter courtesy lights

- Plexiglas and aluminum access hatch to the flybridge
- Plexiglas and stainless steel windscreen
- Stainless steel protection pulpit and handrails

**Fiberglass radar mast, black painted, with large-capacity storage and aluminum wings supporting:**

- Navigation lights
- Radar and GPS antennas equipment,
- TV antenna,
- Horn
- Humphree GPS antenna
- Lighting protection
- Flybridge lights

**Pilot console with rotating dashboard with navigation and engine control screens, including Raymarine GS Series Multi-Function Displays, plus:**

- Steering wheel in sky
- Main engines and reversing gear levers
- Key switches for port and starboard engines
- Rudder angle indicator
- Horn, windscreen wipers, rudder pump, anchor winch and chain counter, searchlight
- Panel with warning and alarms for monitoring system
- Helm Seat with storage
- C-shape sofa with integrated chaise, decorative cushions, and large capacity storage
- 2 electric adjustable height table legs with removable teak table for 8 people
- Teak sofa tables
- Sunbathing aft platform
- Galley with sink, hot and cold water supply, fridge, ice maker, grill, and storage
- Covers for table, sofa, and helm seat

## **Bow**

---

The most prominent innovation is the use of the bow space. An area of the yacht usually limited due to lack of comfortable seating or shade, MCY has turned this space into an inviting lounge area with an ample amount of seating.

The innovation begins with the use of the Portuguese-style bridge. The walkway is cleared down the middle of the deck keeping you safe and secure within the yacht; you are not exposed at the edges of the deck. The flat deck is covered in extra large sofas with retractable back risers to give support for table seating. The two half-moon tables are high and low converting from a full lounge space to a settee. There is a leaf for the tables converting it into a dining table capable of seating ten.

This space is covered with four fiber poles holding up a canopy to cover the entire area. This space must be experienced to see the additional lounging options!

- Chain locker in the anchor winch area, with:
  - Two storage and handrails to fix fenders
  - Chain guiding support with automatic chain wash
  - Anti-fire hose, 20 m length x 45 mm diameter
  - Cold and hot water shower
  - Teak floor with perimeter courtesy lights
  - Flush deck hatch for VIP cabin emergency exit
- Semi-circular sofas, with integrated removable backrest for double function (sofa or sunbathing cushion), with large-capacity storage and decorative cushions
- The semi-circular table in teak, with 2 electric adjustable height legs. Tables can be connected with one further teak table, to create a large dining table for 10-12 people
- Different sunbathing and sofa layout:
  - Complete Portuguese bridge with large capacity storage and hatches.
  - Chaise lounges integrated into port and starboard semi-circular sofas
  - Large opening Portuguese bridge with central sofa, forward to the windscreen
  - Stainless steel handrails
  - Teak handrails on bulwark along the Portuguese bridge
  - Forward windscreen in sandwich tempered glass, with UVA and IR filter films
  - 4 electric windscreen wipers for forward windscreen
  - Covers for table, sofa, and chaise lounge/sunbathing cushions

## Master Stateroom

---

A huge, inviting master suite opens full beam. Monte Carlo Yachts' signature windows bring the outside in with water level views. Walk around the room, high ceiling, storage space, and a walk-in closet for the Master.

Covered in Casa Armani, Rubelle, and Dedar materials, no level of luxury is missed.

Closing the door in the staterooms gives privacy seen in much larger yachts. MCY uses sound-deadening materials in the walls, ceilings, and doors. When you shut the door, you are in a room with extreme isolation, a very nice feature not seen in many yachts. This is one of the quietest boats you may ride.

The en-suite bathroom provides privacy with a water closet and a large shower with mosaic tiles, a rain forest shower head, with a hydro-massage shower column. The drain-less shower floor is a very nice touch.

- King size bed with complete storage underneath
- Mattress, bedspread, and pillows
- Two nightstands in wood and leather

- Wall lamps above nightstands
- LED power and courtesy lights
- MCY design large windows with opening portholes and mosquito nets
- Sofa with storage underneath (with home theater subwoofer)
- Electric Venetians blind covered in microfiber technical fabric
- Carpet

---

## Ensuite Master Walk-In Closet

---

- Wardrobe on bulwark with hanging bar
- Mirror
- Cabinet with drawers
- Direct LED lights on ceilings
- Carpet

---

## Ensuite Master Head

---

- Separate WC room with:
  - Glass doors
  - Tecma WC
  - Tecma bidet
- Countertop with integrated large size basin and floor in Italian stone
- Electric Venetian blinds covered in microfiber technical fabric
- Mirror and side shelves, the cabinet under the basins and LED spotlights
- Separate shower room with:
  - Mosaic tiles
  - Shower column with central rain shower on the ceiling with hydro-massage shower column
  - LED lights on the ceiling and in the shower
  - Extractor

---

## VIP Stateroom

---

Forward is the large VIP Stateroom with an en-suite Head. The tall ceiling carries to the edge of the hull (the flat deck on the foredeck opens up this space). The high freeboard gives room to the bed at a low level. Lots of storage with two hanging lockers.

- Double beds with storage underneath
- Mattress, bedspread, and pillows
- Two nightstands in wood and leather
- Wall reading lamps in leather
- Cabinets on the starboard side next to the main entrance

- Power LED indirect light and LED spotlights
- Four opening portholes with mosquito nets
- Wardrobes with leather doors, hanging bar, and light
- Cabinets on outboard sides
- Emergency hatch on the ceiling, with mosquito net
- Venetian blinds covered in microfiber technical fabric
- Carpet

---

## Ensuite VIP Bathroom

---

- Tecma WC
- Sink
- Mirror
- A cabinet above and under the sink, with top and floor in Italian stone with sandwich construction to reduce weight

---

## Guest Staterooms

---

To port and starboard are the 3rd and 4th staterooms with en-suite heads. Wide twin berths slide together to form a single queen berth—hanging lockers and storage for your guests.

- Twin beds with storage underneath
- Twin beds can be transformed into a king-size bed, through the sliding system
- Mattress, bedspreads, and pillows
- One night stand in wood and leather with floating top and storage
- Mirrors
- Two opening portholes with mosquito nets
- Power LED stripes for in-direct light and LED spotlights
- Wall night reading lamps in leather
- Wardrobe with leather doors, hanging bar, and light
- Venetian blinds covered in microfiber technical fabric
- Carpet

---

## Ensuite Port Guest Bathroom

---

- Port guest head can be used as a day toilet with direct access from the lower deck
- Wet toilet with Tecma WC
- Sink
- Mirror
- A cabinet under the sink
- Thermostatic taps in the shower

- Italian stone floor and cabinet top with sandwich construction to reduce weight
- Shower with glass and steel door, mosaic tiles, and column with central rain shower
- Opening porthole with mosquito net
- LED spotlights on the ceiling and in the shower
- Extractor

---

## Ensuite Starboard Guest Bathroom

---

- Tecma WC
- Sink
- Mirror
- Cabinet above and under the sink
- Thermostatic taps
- Italian stone floor and cabinet top with sandwich construction to reduce weight
- Shower with glass and steel door, mosaic tiles, and shower with central rain shower
- Opening porthole with mosquito net
- LED spotlights on the ceiling and in the shower

---

## Crew Area

---

A large crew space with stateroom, crew mess/prep area, and separate head. This crew area is designed for crew comfort and function. Aluminum tiles accent the usable quarters.

The crew prep area includes the additional fridge and freezer with a stacked washer and dryer. Counter space and storage give the crew (and owners) privacy when desired.

- Working top in Corian
- Hanging furniture and cabinets
- Washing machine (Miele or equivalent high-quality standard)
- Dryer (Miele or equivalent high-quality standard)
- In-column 130 l fridge with 65 l freezer (Indel Webasto or equivalent quality standard)
- Separate crew stateroom with two berths and locker and storage areas. The crew head is also separate through entry into the engine compartment.
- 1 single cabin with two beds
- Bed with mattresses, bedspreads, and pillows
- Wardrobe with hanging bar
- Direct LED lights on ceilings
- Opening porthole with mosquito net
- Storage underneath the bed
- Cabinet with shelves on the port side

---

## Crew Bathroom

---

- Tecma WC
- Sink
- Direct LED spotlights on ceilings
- Mirror
- Cabinets
- Shower
- Weathertight door to the engine room

---

## Hull Design

---

- High freeboard provides great sea-keeping with a dry ride.
- MCY 76 has a planing hull, with a 15° dead-rise angle along the entire bottom, deep V? bow, with 6 iso-parametric spray rails. The structural project has been developed according to GL, which has certified CE design Category A.
- Hull, deck, and superstructure are made in sandwich lamination using only vinyl-ester resin in the external skin to prevent osmosis phenomena and DCPD resin.
- A bow crash box to improve the resistance to waves and impacts is provided. Furthermore, in that same area, the hull is reinforced by using Kevlar lamination.
- Structural bulkheads are in a sandwich. The other internal partition walls are built using LARICROSS composite materials.

---

## Engine and Propulsion Systems

---

The MCY 76's design and use of the latest technologies provide a very efficient hull. The efficiency in drive and maneuverability of ZF Pods allows smaller engines with the same performance as larger engines with much greater fuel efficiency.

The twenty-one-knot cruise will burn only 80 gal/hr. Maneuverability is greatly enhanced, providing the ability to navigate tight quarters more easily. Pod Joystick operation with a bow and stern thrusters gives more ability to maneuver securely.

- Engines: MAN V8 1200, 8 cylinders, 90° V design, maximum power output at 2.300 rpm: 886 kW (1.200 hp), Gearbox ZF 500, POD ZF POD 4000
- Propellers: 2 pairs of NIBRAL alloy, four blades, contra-rotating propellers Bow Thruster 24V, 300 mm diameter, 240 kg thrust (15.5HP)
- Stern Thruster 24V
- Maneuvering system Maneuvering joysticks (main helm and flybridge) for easy control at docking, with electronic control of engines
- Interceptors 2x Humphree interceptors; 900 mm length and 50 mm range

---

## Decks and Deck Equipment

---

Ample spaces and easy access to enjoy all the on-deck spaces. Thoughtful placement of deck equipment makes handling lines and docking safer and more secure.

Wide, covered walkways around the deckhouse with full bulwarks covering the entire walkway.

The design provides a secure and safe space to walk around the yacht. You are never "outside" of the vessel while walking from stern to bow. A feature and aesthetic normally seen on mega yachts of greater than 35 meters gives this 23-meter yacht a much larger look and feel. Decks

- Teak floor with perimeter courtesy lights
- Storage with GRP door, containing diesel intake on port and starboard sides on the superstructure and level indicators.
- Storage covered with teak door and step, containing freshwater intake (on the port side) and black and grey waste discharges (on the starboard side)
- Teak handrails on bulwark with stainless steel handrails
- Lateral access doors
- Stainless steel fender rubber with rubber insert reinforcement
- LED power lights on ceilings
- Tempered high thickness glass windows glued to the superstructure
- A semi-automatic electric watertight door from saloon to starboard sideway
- Window on the starboard side (manual)

---

## Shore Power

---

- Two 230V AC, 50A shore inlets placed on stairs hatch with Glendinning master cable systems AC power source run to the main electrical panel in the engine room.
- Power sources are protected by isolation transformers, galvanic isolators, and magneto/thermal breakers.
- Each shore power line has a multi-meter to control all the electrical parameters (Volt, Amp, Watt, frequency)

---

## Ground Equipment

---

- 50 kg steel anchor with 100 m chain, 12 mm diameter
- Reversible electric anchor winch (24V; 3.000 W), with fore-deck, main helm, and flybridge controls (controls on the floor for up/down/captain operation)
- Stem head roller with automatic anchor launch and retrieve
- Bow stainless steel protection
- Stainless steel bow fairleads with stainless steel protection
- Stainless steel bow, stern, and spring cleats (2 pairs)



- Twin stern mooring electric winches
- Stern stainless steel fairleads with rollers

## Generators

---

- Two 23KW Kohler generators, 115/230 V AC, 60Hz, 12V DC starter, with sound shield box and electronic control panel located in the engine room. Port hours -?Starboard hours - ?. AC power source run to the main electrical panel in the engine room
- Power sources are protected by magneto/thermal switches
- The generator has a multi-meter that control all the electrical parameters (Volt, Amp, Watt, frequency)
- 230V AC distribution
- A double Bus (A, B) that spreads current to all the appliances is provided. Each appliance is protected by magneto/thermal breakers

## Exclusions

---

Owner's personal belongings.

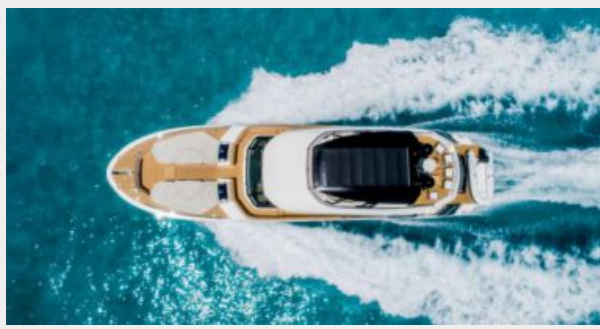
## Disclaimer

---

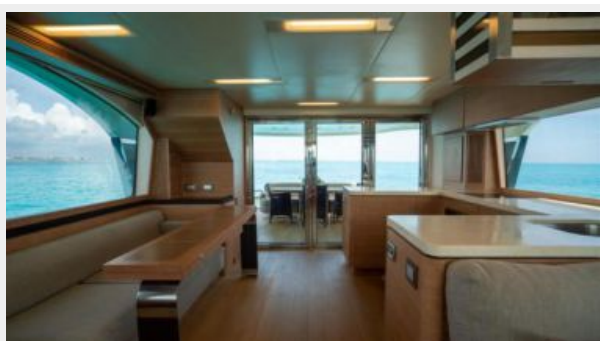
The Company offers the details of this vessel or yacht in good faith but cannot guarantee or warrant the accuracy of this information nor warrant the condition of the vessel. A buyer should instruct his representatives, agents, or his surveyors, to investigate such details as the buyer desires validated. This vessel or yacht is offered subject to prior sale, price change, or withdrawal without notice.

# PHOTOS









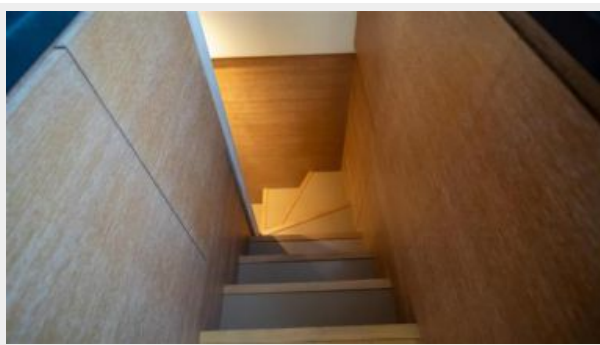






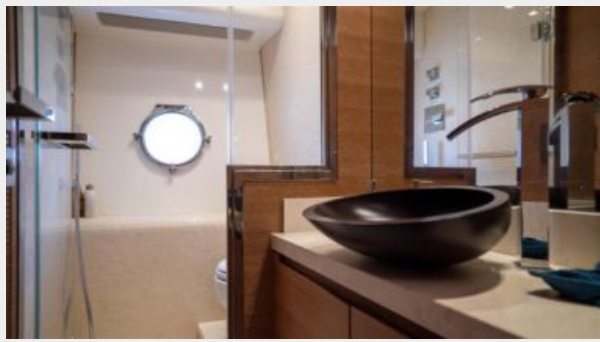






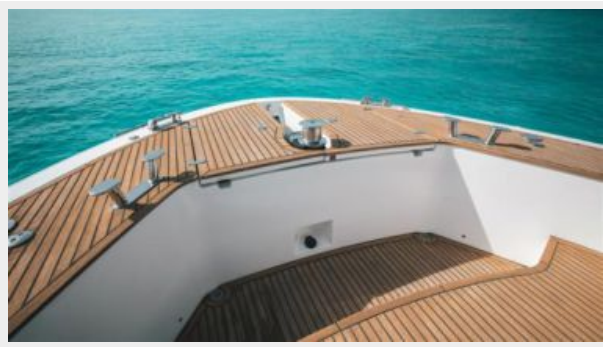
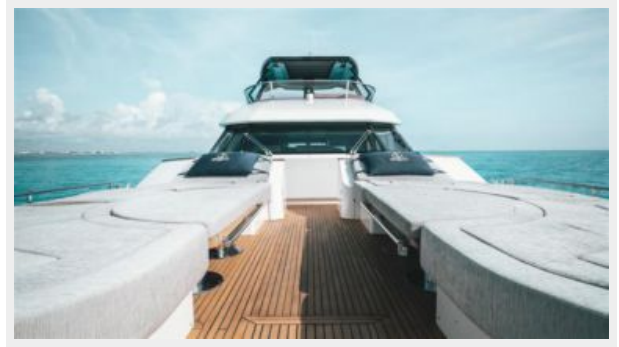
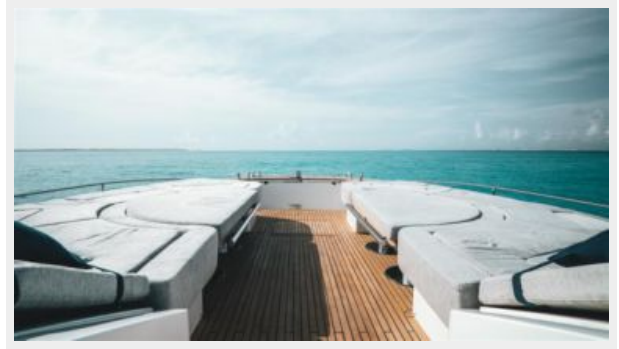




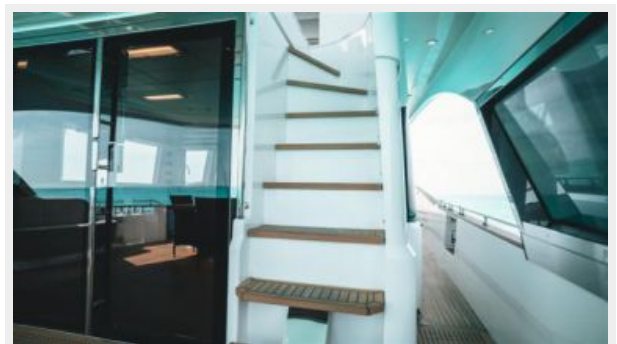


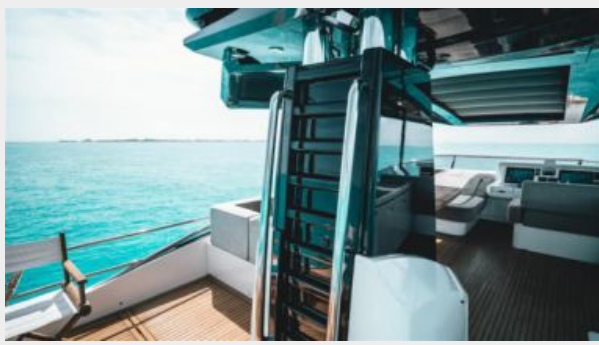
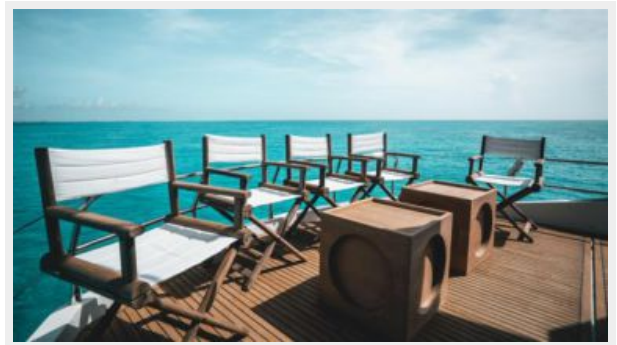










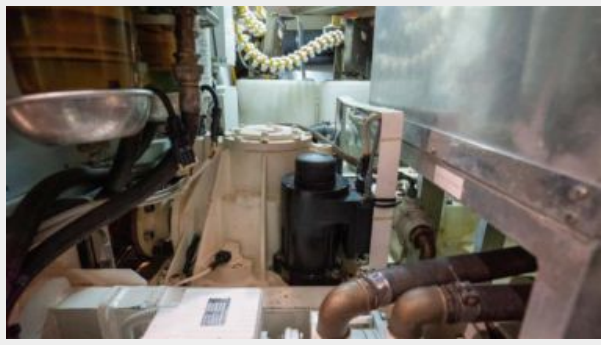












# CONTACTS

---

Andrey Shestakov, leading yacht broker of the sales department of Shestakov Yacht Sales Inc. Shestakov Yacht Sales Inc., the official representative of the Miami/Fort Lauderdale FL headquarters.

## Contact details

---

Email: [andrey@shestakovyachtsales.com](mailto:andrey@shestakovyachtsales.com)

Web: [shestakovyachtsales.com/en/](http://shestakovyachtsales.com/en/)

## Telephones

---

USA: +1(954)274-4435

## Office hours

---

Monday – Saturday: **9:00 - 21:00** EDT

Sunday: **closed**

## Address

---



Harbour Towne Marina, 850 NE 3rd St,  
STE 213, Dania, FL 33004