

GET ER DONE — VIKING



Судостроитель: VIKING

Год постройки: 2000

Модель: Катер для спортивной рыбалки

Цена: **ЦЕНА ЯХТЫ ПО ЗАПРОСУ**

Местонахождение: United States

Длина общая: 55' 0" (16.76m)

Ширина: 17' 4" (5.28m)

Мин. осадка: 4' 10" (1.47m)

Макс. осадка: 5' 0" (1.52m)

Купить **GET ER DONE — VIKING** а также выбрать подходящую вам яхту из нашего каталога яхт вам поможет опытный яхтенный брокер Андрей Шестаков. На сегодняшний день компания **Shestakov Yacht Sales Inc.** имеет большое количество яхт в собственном списке продаж, а также тесно сотрудничает со всеми крупными яхтенными производителями по всему миру.

Для того чтобы купить яхту **GET ER DONE — VIKING** а также проконсультироваться по любому вопросу связанному с покупкой, продажей, чартером яхт позвоните по телефону **+7(918)465-66-44**.

ОГЛАВЛЕНИЕ

ОГЛАВЛЕНИЕ	2
ХАРАКТЕРИСТИКИ	4
Обзор	4
Основная информация	4
Размеры	4
Скорость, вместимость и масса	5
Размещение	5
Корпус и палуба	5
Информация о двигателе	5
ПОДРОБНОЕ ОПИСАНИЕ	6
2000 55' Viking Specs and Details	6
Исключения	10
Отказ от ответственности	10
ФОТОГРАФИИ	11
7414946_20200702084233608_1_XLARGE	11
7414946_20200702084331186_1_XLARGE	11
7414946_20200702084322009_1_XLARGE	11
7414946_20200702084238070_1_XLARGE	11
7414946_20200702084258653_1_XLARGE	11
7414946_20200702084304019_1_XLARGE	11
7414946_20200702084308751_1_XLARGE	12
7414946_20200702084313292_1_XLARGE	12
7414946_20200702084317837_1_XLARGE	12
7414946_20200702083558951_1_XLARGE	12
7414946_20200702084412176_1_XLARGE	12
7414946_20200702084419571_1_XLARGE	12
7414946_20200702083555288_1_XLARGE	13
7414946_20200702084415824_1_XLARGE	13

7414946_20200702083602907_1_XLARGE	13
7414946_20200702083607131_1_XLARGE	13
7414946_20200702083611812_1_XLARGE	13
7414946_20200702083616726_1_XLARGE	13
7414946_20200702083624082_1_XLARGE	14
7414946_20200702083628340_1_XLARGE	14
7414946_20200702083636871_1_XLARGE	14
7414946_20200702083632759_1_XLARGE	14
7414946_20200702083641044_1_XLARGE	14
7414946_20200702083645603_1_XLARGE	14
7414946_20200702083650190_1_XLARGE	15
7414946_20200702083658643_1_XLARGE	15
7414946_20200702083707398_1_XLARGE	15
7414946_20200702083703009_1_XLARGE	15
7414946_20200702084346372_1_XLARGE	15
7414946_20200702083713224_1_XLARGE	15
7414946_20200702084352733_1_XLARGE	16
7414946_20200702084400080_1_XLARGE	16
7414946_20200702084407527_1_XLARGE	16
КОНТАКТЫ	17
Контактная информация	17
Телефоны	17
Время работы	17
Адрес	17

ХАРАКТЕРИСТИКИ

Обзор

GET ER DUN is by far the nicest and most up to date 2000 55' Viking Convertible currently for sale world wide. She is powered with the desiarble 1300hp MAN *D2842LE404*. She has an open check book life and nothing has been spared. From her major updates on her Electronics, new paint, soft goods to the Engine services. Some of her strong points are listed below. Seller is open to ALL and ANY offers. Would also consider a high quality Center Consoler or Cruisers boat. Bring all TRADES and OFFERS. Seller will also consider selling the current slip located in the desirable Conch Harbour Marina in Key West, Fl.

- 1300hp MANS- 3,600 hours- All services up to date. (Records avaiable upon request)- 2019
- New Onan 21KW Generator - 400 hours.
- New Garmin Electronics (Bridge & Tower) (Sounder, Auto Pilot, GPS/ Radar)
- New granite counter tops and all new cooking appliances, serviced sub zero fridge / freezers.
- Full Paint Job.
- Electric salon door- Push Button. (NOT STANDARD)
- New Rup Outriggers.
- Seller will entertain Trades. (34' or larger high end Center Console. (HCB, Yellowfin, Invincible & Seavee)

Основная информация

Тип судна: Катер для спортивной рыбалки

Модельный год: 2000

Год постройки: 2000

Страна: United States

Размеры

Длина общая: 55' 0" (16.76m)

Ширина: 17' 4" (5.28m)

Мин. осадка: 4' 10" (1.47m)

Макс. осадка: 5' 0" (1.52m)

Скорость, вместимость и масса

Вместимость воды: 250 Gallons

Объем топливного бака: 1250 Gallons

Размещение

Всего кают: 3

Всего ком. состава: 2

Корпус и палуба

Материал корпуса: Fiberglass

Информация о двигателе

Двигатели: 2

Производитель: MAN

Модель: D2842LE404

Тип двигателя: Inboard

Тип топлива: Diesel

ПОДРОБНОЕ ОПИСАНИЕ

2000 55' Viking Specs and Details

Overview

Sleeps 6 owners and guests in 3 staterooms. There are 3 owner and guest staterooms including one guest head and one master head.

Vessel Walkthrough

Upon entry to the spacious salon to port is an L-Shaped ultra-leather sofa with storage beneath. Forward to starboard is dinette pedestal. Above is the 42" flat screen TV and speakers. Interior has duet blinds, updated carpet and lambrequins all in natural earth tones. Down three steps in the companionway is central vacuum under steps and washer/dryer. Galley is on same level as salon to port.

Salon

- Duette blinds
- Updated carpet
- Upright panel to starboard
- Teak credenza to starboard
- New Flat Screen TV
- Direct TV receiver
- DVD player
- Sunbrella floor runners
- New Amtico entryway
- Nutech vacuum system
- New KVH - SAT TV

Galley

The galley is forward to port with three brand new low profile Sub Zero units, two drawer under counter refrigerators with freezers, storage cabinets, storage for dishes and glasses, microwave and hidden countertop galley stove, disposal and insta-hot.

- Sharp Carousel microwave/convection oven
- Kenmore insta hot water heater
- NEW GRANITE countertops.
- Garbage disposal- 2018
- Sub Zero Fridge / Freezer (Over Under Units- Rebuilt)
- Teak and holly floor
- Dinette
- Ultra Leather cushions

- TV
- Kenyon 3 burner cooktop- 2018

Companionway

- Kenmore washer and dryer
- vacuum hook up
- Carpet runners

Master Stateroom

The master stateroom is aft to port with queen size walk around bed with custom built mattress and lift top for cedar storage beneath. Quilted bedspread with pillow shams and upholstered headboard, indirect lighting, lamps, cedar lined hanging lockers, storage cabinets and drawers, flat screen TV, ensuite AC, head with stall shower and Amtico teak and holly sole.

- New Flat screen with Direct TV receiver
- End tables and lamps
- Overhead lighting

Master Stateroom Head

- Corian counter with undermount sink
- Teak vanity below, mirror above with storage
- Stall shower with glass door
- Linen closet with mirror
- Mirrored ceiling
- Vacu Flush head
- Amtico wood flooring

Guest Stateroom, Starboard

The starboard guest stateroom has upper and lower berths with cedar storage beneath lower berth, quilted bedspread and pillow shams, throw pillows, cedar lined walk-in closet with full length mirror and storage drawers. Ensuite access to head with stall shower and Amtico teak and holly sole.

VIP Stateroom, Forward

The forward VIP stateroom has the crossover arrangement with full and twin berths. Flat screen TV, Direct TV, stereo speakers, telephone outlet and cedar lined hanging locker. Ensuite access to head with stall shower.

Guest Head

- Teak and holly sole
- Vacu Flush head

- Stall shower with glass door
- Mirrored ceiling
- Corian countertop with molded in sink
- Mirrored vanity above with storage
- Teak credenza below
- Access from companionway, guest stateroom and VIP

Cockpit

- Transom Tuna door
- Refrigerated fish box with macerator
- 6 rod rocket launchers on flybridge rail
- Washdown system
- Underwater lights
- Speakers
- Clearing holders in haunches
- Bluewater fighting chair with 4 rod rocket launcher
- NEW Rupp triple spreader outriggers
- Live bait well in cockpit sole
- LED indirect lighting system under gunnel
- 6 cockpit rod holder
- Cockpit tackle locker/center with drawers
- Gaff tubes
- Bait freezer, port bulkhead
- Under gunnel, port and starboard, Hubble reel outlets, 30 amp
- Starboard cablemaster
- Ice Chipper- Dumps into Stb in deck Fish Box.

Flybridge

- New GARMIN autopilot
- NEW Hynautic hydraulic controls
- 2 Garmin multifunction chart plotter/sounder/radar
- Phone booth style helm enclosure
- Electronic trolling valves
- 5" Compass
- ACR spotlight
- Electronic recessed teaser reels
- Manual gauges
- Drink box, port forward
- 6 rod launcher on aft flybridge rail

Electronics

- 2 Garmin touch screen multi-function displays

- Radar/chart/sonar
- Garmin 72 mile radar
- Garmin AIS 600
- VHF
- Standard Horizon explorer VHF
- Ritchie backlit compass
- ACR spotlight

Deck/Hull

- Fluke anchor with 300' of chain
- Simpson Lawrence windlass
- Bennett trim tabs

Electrical System

- NEW Generator 21 KW Onan- 400 hours.
- Battery parallel switch
- Starboard 50amp shore power connect
- Battery charger
- Heavy duty batteries with fiberglass box-
- Glendinning cablemaster
- Twin Charles ISO boost transformers

Engine Room / Mechanical Equipment

- Twin 2842 1300hp MAN with ONLY 3,600 hours.
- 1000 hour service completed by FLORIDA KEYS MARINE DIESEL- 2019
- Onan 21KW generator- 400 HOURS
- Fire control system automatic/manual
- Bilge pumps
- Fuel priming pumps
- Hynautic engine controls -2017
- Oil change system
- Pressure salt and fresh water system
- Bilge blower
- Dripless shaft logs with spares
- Dual racor 1000's
- Remote mounted oil filters
- Cruise Air A/C - NEW 2017
- Sea Star steering, rebuilt January 2018
- Fishbox compressor
- AC/DC lighting
- Port/starboard crash pump pickups
- Manual gauge package

- Port and starboard Charles ISO boosts
- Cablemaster, starboard
- Cruise Air refrigeration

Other Features

- Updated carpet throughout
- Clean, well maintained and ready for anything
- Lightly fished and family cruised

Exclusions

- EPIRB, PLB safety equipment, life jackets
- Fishing tackle, rod cluster holders, rod, reels
- Personal items, galley equipment, cleaning supplies and equipment
- Tools and tool box

Исключения

При продаже яхты исключаются личные вещи владельца.

Отказ от ответственности

Компания предоставляет описание судна или яхты добросовестно, но не может гарантировать точность этой информации, а также не ручается за техническое состояние. Покупатель должен проинструктировать своих агентов или оценщиков исследовать представленную информацию более подробно, по собственному желанию. Продажа судна или яхты, изменение цены или снятие с продажи будет происходить без предварительного уведомления.

ФОТОГРАФИИ

7414946_20200702084233608_1_XLARGE



7414946_20200702084331186_1_XLARGE



7414946_20200702084322009_1_XLARGE



7414946_20200702084238070_1_XLARGE



7414946_20200702084258653_1_XLARGE



7414946_20200702084304019_1_XLARGE



7414946_20200702084308751_1_XLARGE



7414946_20200702084313292_1_XLARGE



7414946_20200702084317837_1_XLARGE



7414946_20200702083558951_1_XLARGE



7414946_20200702084412176_1_XLARGE



7414946_20200702084419571_1_XLARGE



7414946_20200702084415824_1_XLARGE



7414946_20200702083555288_1_XLARGE



7414946_20200702083602907_1_XLARGE



7414946_20200702083607131_1_XLARGE



7414946_20200702083611812_1_XLARGE



7414946_20200702083616726_1_XLARGE



7414946_20200702083624082_1_XLARGE



7414946_20200702083628340_1_XLARGE



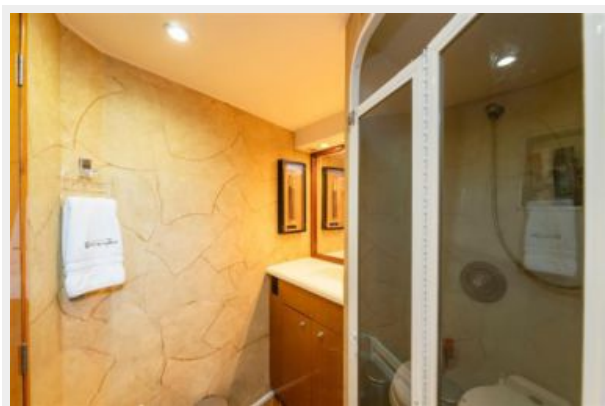
7414946_20200702083632759_1_XLARGE



7414946_20200702083636871_1_XLARGE



7414946_20200702083641044_1_XLARGE



7414946_20200702083645603_1_XLARGE



7414946_20200702083650190_1_XLARGE



7414946_20200702083658643_1_XLARGE



7414946_20200702083703009_1_XLARGE



7414946_20200702083707398_1_XLARGE



7414946_20200702083713224_1_XLARGE



7414946_20200702084346372_1_XLARGE



7414946_20200702084352733_1_XLARGE



7414946_20200702084400080_1_XLARGE



7414946_20200702084407527_1_XLARGE



КОНТАКТЫ

Андрей Шестаков (Andrey Shestakov) – ведущий яхтенный брокер отдела продаж яхт и судов компании Shestakov Yacht Sales Inc. Официальный представитель Shestakov Yacht Sales Inc. для русскоговорящих клиентов в центральном офисе компании в Майами/Форт Лодердейл/Флорида/США.

Контактная информация

Email: andrey@shestakovyachtsales.com

Web: shestakovyachtsales.com

Телефоны

Краснодарский край: **+7(918)465-66-44**

США, Майами, Флорида: **+1(954)274-4435**

Время работы

Понедельник – Суббота: **9:00 - 21:00**
EDT

Воскресенье: **Закрито**

Адрес



Harbour Towne Marina, 850 NE 3rd St,
STE 213, Dania, FL 33004