

## NORTHERN LIGHT — COMFORTINA



**Builder:** [Comfortina](#)

**Year Built:** 2002

**Model:** Cruising Sailboat

**Price:** PRICE ON APPLICATION

**Location:** United States

**LOA:** 42' 0" (12.80m)

**Beam:** 12' 8" (3.86m)

**Max Draft:** 6' 11" (2.11m)

Our experienced yacht broker, Andrey Shestakov, will help you choose and buy a yacht that best suits your needs **Northern Light — Comfortina** from our catalogue. Presently, at Shestakov Yacht Sales Inc., we have a wide variety of yachts available on our sale's list. We also work in close contact with all the big yacht manufacturers from all over the world.

If you would like to buy a yacht **Northern Light — Comfortina** or would like help answering any questions concerning purchasing, selling or chartering a yacht, please call **+1(954)274-4435**

---

# TABLE OF CONTENTS

---

TABLE OF CONTENTS	2
SPECIFICATIONS	5
Overview	5
Basic Information	5
Dimensions	5
Speed, Capacities and Weight	6
Accommodations	6
Hull and Deck Information	6
Engine Information	6
DETAILED INFORMATION	7
Description	7
Exclusions	11
Disclaimer	11
PHOTOS	12
IMG_1598	12
IMG_1597	12
IMG_1599	12
IMG_1601	12
IMG_1602	13
DSC00057	13
DSC00060	13
DSC00064	13
DSC00065	13
DSC00067	13
DSC00071	14
DSC00074	14
DSC00076	14
DSC00075	14

---

DSC00078	14
DSC00081	14
DSC00178	15
DSC00086	15
DSC00089	15
DSC00092	15
DSC00094	15
DSC00095	15
DSC00098	16
DSC00099	16
DSC00102	16
DSC00105	16
DSC00107	16
DSC00109	16
DSC00110	17
DSC00112	17
DSC00114	17
DSC00115	17
DSC00116	17
DSC00117	17
DSC00120	18
DSC00121	18
DSC00122	18
DSC00124	18
DSC00126	18
DSC00127	18
DSC00128	19
DSC00133	19
DSC00134	19

---

---

DSC00136	19
DSC00137	19
DSC00138	19
DSC00140	20
DSC00141	20
DSC00147	20
DSC00154	20
DSC00155	20
DSC00162	20
DSC00164	21
DSC00165	21
DSC00166	21
DSC00168	21
DSC00170	21
DSC00176	21
DSC00177	22
DSCF5442	22
NL1-for sale 001	22
<b>CONTACTS</b>	<b>23</b>
Contact details	23
Telephones	23
Office hours	23
Address	23

---

# SPECIFICATIONS

---

## Overview

---

### HUGE PRICE REDUCTION - WAY UNDER MARKET VALUE

Contact the listing broker for a showing or to make an offer.

The Comfortina 42 is a **seaworthy performance cruiser** that provides **ample living space and luxury below decks**. She features a beautiful solid **teak interior** with many well-finished details. There is **plenty of storage space** in lockers, drawers, and the huge cockpit locker to starboard. Northern Light is a **single owner** boat that has been **very well cared for and loved**. Put this one on your must-see list!

### 3 Cabin 2 Head Layout

**Solar**

**Water Maker**

**Large sail inventory**

**New bottom with six coats of epoxy - 2018**

**New Bottom Paint and Hull Wax 9/20**

Ready to throw off the lines and go cruising today? You need to see Northern Light!

## Basic Information

---

**Category:** Cruising Sailboat

**Model Year:** 2002

**Year Built:** 2002

**Country:** United States

## Dimensions

---

**LOA:** 42' 0" (12.80m)

**LWL:** 37' 9" (11.51m)

**Beam:** 12' 8" (3.86m)

**Max Draft:** 6' 11" (2.11m)

---

## Speed, Capacities and Weight

---

**Displacement:** 40564000 Pounds

**Water Capacity:** 60 Gallons

**Fuel Capacity:** 57 Gallons

---

## Accommodations

---

**Total Cabins:** 3

**Total Heads:** 2

---

## Hull and Deck Information

---

**Hull Material:** Fiberglass

**Deck Material:** Teak

---

## Engine Information

---

**Engines:** 1

**Manufacturer:** Volvo

**Model:** D55

**Engine Type:** Sail Drive

**Fuel Type:** Diesel

---

# DETAILED INFORMATION

---

## Description

---

### Comfortina 42

**Hull:** Blue with Yellow/Gold trim and Rub rail

Hull and deck are insulated with closed cellular foam and internal liner

**Bottom was redone with 6 coats of epoxy 2018 and bottom painted 9/2020**

**Sail:** Main 8.5 oz Dacron with Lewmar Batten Cars & Slides with 3 reef points **Sail new 2014**

Spinnaker **New - flown three times**

#1 Head Sail (150 %) **New – Never Used**

#2 Head Sail (140%)

#3 Cutter Sail

Storm Sail **New – Used two times**

Sock for Spinnaker

**Rig:** Traditional Mast

Furling Cutter stay

Boom with 2 reef cars

Dutchman Boom Brake

Mast mounted Spinnaker Pole

Cars adjustable from the cockpit

Running backstays

Radar Reflector

### **Engine:**

Volvo 55 HP with sail drive – 4606 hours – **VERY WELL MAINTAINED**

3 bladed folding prop **New 2019**

Line cutter **New 2019** - Not Installed

**Deck:**

Teak in cockpit and all walk surfaces - **VERY WELL MAINTAINED**

Lifelines with access gates on Port and Starboard.

6 Hatches with screens and covers

**Winches:**

2 Electric primary winches (Andersen)

4 self-tailing Main & Halyard Winches (Andersen)

**Canvas:**

Dodger **New 2018**

Bimini with connecting roof between Dodger & Bimini

Full enclosure

Complete set of cockpit cushions

Summer sun cover for cockpit & deck

**Water Maker:**

Spectra, Santa Cruz Model, 38 liters per hour capacity with spare motor and spare filters

Ultra – Violet water purification system

**Windless:** Lewmar, with vertical Capstan and with AGM Battery – **New Motor 2018**

Spare Windlass motor

**Inverter:** 1200W output, 115 /230 V

**Battery Charger:** Master volt, 115 or 230 V input.

**Batteries:**

5 House Batteries (95 A/H each) **New 2017**

1 AGM Windlass battery **New 2017**

1 Generator Start battery **New 2017**

1 Starting Battery - **New 2019**

**Solar Panel:**



2 85-watt output

1 75watt output

4 Solar Panel Control Instruments (1 is a spare)

All LED Lights (Steaming light not LED)

**Tankage:**

1 42 gal Diesel Tank

1 15 gal Diesel Tank

Tank indicators at the navigation station

**Water Tank:**

2 60 gal Capacity

Spare Pumps

**Water Heater:** 13 gal capacity

**Heater:** Wabesto forced Air Heater with six outlets

**Ground Tackle:**

55 lbs Delta

44 lbs Stainless Steel Bruce

55 lbs CQR

22 lbs Bruce Stern Anchor

Fortress Storm Anchor

328' all Chain rode (10 mm) **2013**

**Tender:** 8`8" Inflatable Dinghy **New 2018**

**Tender Motor:** 4 HP Yamaha 4-stroke engine with internal tank

**Safety:**

EPIRB

Four-person Winslow life raft. – **needs recertification**

Paratek Sea Anchor – **never used**

2 Drogas with 100' line each

Bolt / Wirecutter

Man-over-board Pole

Life rings w/lines

Emergency Bilge Pump (4000 L/Hr).

Built-in Safe For document, Valuables, and Security

**Interior:**

Coil Mattresses for V-Birth and Port Guest cabin

Lee – cloths mounted in Main Cabin for Port & Starboard Settee

Starboard Guest Cabin or locker

**Radio:** Panasonic with 8 CD Changer

**Instrumentation:**

6 – Simrad Wind, Depth, Speed Instruments with both inside & outside stations

Lawrence GPS & Chartplotter

Shipmate RS 8400 DSC VHF Radio with both inside and outside stations

ICS – NAV. 6, NAVTEX Unit

ICOM HAM / SSB Radio w / tuner

Pactor 3 Modem

AIS Receiver

Radar

**Shore Power:**

2 30 amp shore power cords with pigtails

1 Galvanic Isolator

**Galley:**

Upright Refrigerator

Chest Refrigerator with 6 gal Freezer

Complete with water Cooled Compressor (One for each)

2 Burner Stove / Oven

**Other:**

Spare Parts

Tools

Dishes & Cutlery, Pans & Cooking ware

8" Ship Clock

8" Ship Barometer

Fans

Fenders

Dock lines

Companionway Screens

---

## **Exclusions**

Owner's personal belongings.

---

## **Disclaimer**

The Company offers the details of this vessel or yacht in good faith but cannot guarantee or warrant the accuracy of this information nor warrant the condition of the vessel. A buyer should instruct his representatives, agents, or his surveyors, to investigate such details as the buyer desires validated. This vessel or yacht is offered subject to prior sale, price change, or withdrawal without notice.

# PHOTOS

IMG\_1597



IMG\_1598



IMG\_1599



IMG\_1601



IMG\_1602



DSC00057



DSC00060



DSC00064



DSC00065



DSC00067

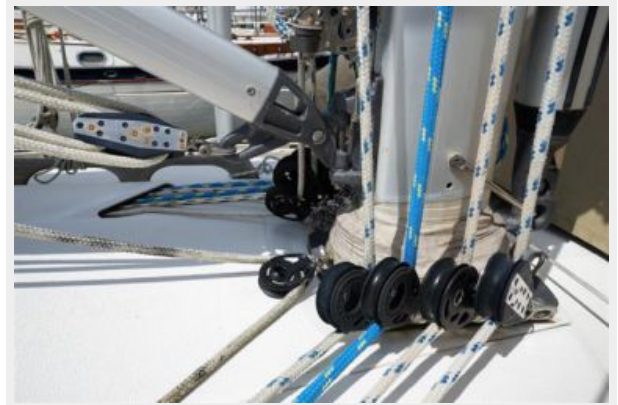




DSC00071



DSC00074



DSC00076



DSC00075



DSC00078



DSC00081



DSC00178



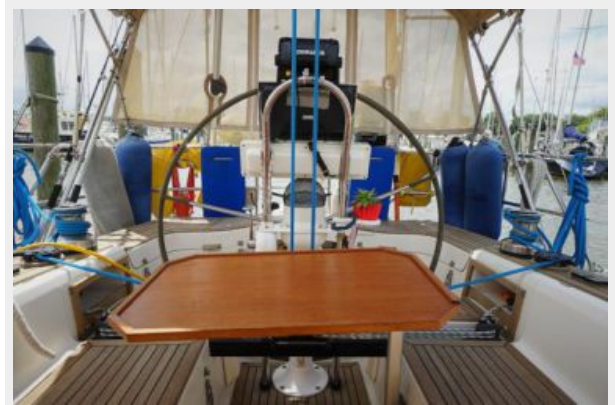
DSC00086



DSC00089



DSC00092



DSC00094



DSC00095





DSC00098



DSC00099



DSC00102



DSC00105



DSC00107



DSC00109





DSC00110



DSC00112



DSC00114



DSC00115



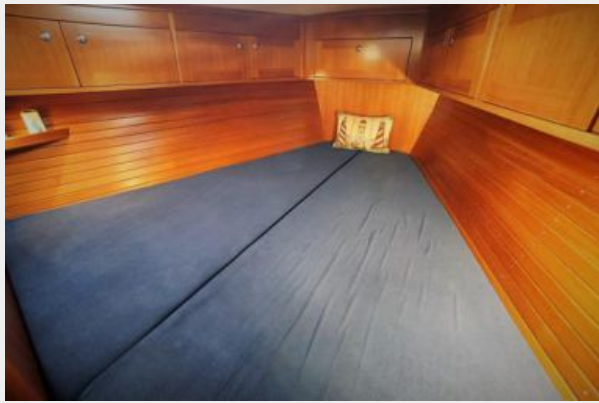
DSC00116



DSC00117



DSC00120



DSC00121



DSC00122



DSC00124



DSC00126

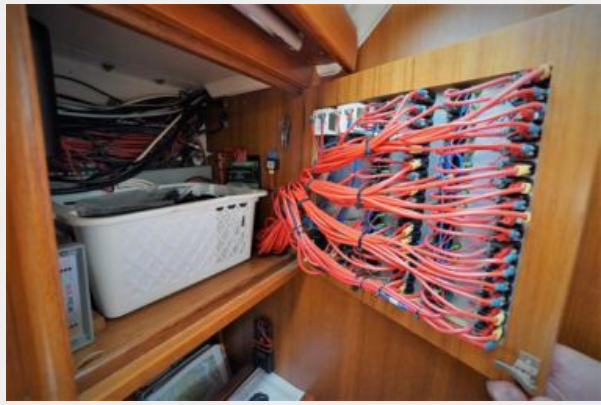


DSC00127





DSC00128



DSC00133



DSC00134



DSC00136



DSC00137



DSC00138



DSC00140



DSC00141



DSC00147



DSC00154



DSC00155



DSC00162





DSC00164



DSC00165



DSC00166



DSC00168



DSC00170



DSC00176



DSC00177



DSCF5442



NL1-for sale 001



# CONTACTS

---

Andrey Shestakov, leading yacht broker of the sales department of Shestakov Yacht Sales Inc. Shestakov Yacht Sales Inc., the official representative of the Miami/Fort Lauderdale FL headquarters.

## Contact details

---

Email: [andrey@shestakovyachtsales.com](mailto:andrey@shestakovyachtsales.com)

Web: [shestakovyachtsales.com/en/](http://shestakovyachtsales.com/en/)

## Telephones

---

USA: +1(954)274-4435

## Office hours

---

Monday – Saturday: **9:00 - 21:00** EDT

Sunday: **closed**

## Address

---



Harbour Towne Marina, 850 NE 3rd St,  
STE 213, Dania, FL 33004