

## SOUTHBOUND — SEA RAY



**Builder:** SEA RAY

**Year Built:** 1998

**Model:** Cruiser

**Price:** PRICE ON APPLICATION

**Location:** United States

**LOA:** 37' 0" (11.28m)

**Beam:** 14' 2" (4.32m)

**Max Draft:** 3' 3" (0.99m)

**Cruise Speed:** 23 Kts. (26 MPH)

Our experienced yacht broker, Andrey Shestakov, will help you choose and buy a yacht that best suits your needs **Southbound — SEA RAY** from our catalogue. Presently, at Shestakov Yacht Sales Inc., we have a wide variety of yachts available on our sale's list. We also work in close contact with all the big yacht manufacturers from all over the world.

If you would like to buy a yacht **Southbound — SEA RAY** or would like help answering any questions concerning purchasing, selling or chartering a yacht, please call **+1(954)274-4435**

# TABLE OF CONTENTS

TABLE OF CONTENTS	2
SPECIFICATIONS	5
Overview	5
Basic Information	5
Dimensions	5
Speed, Capacities and Weight	5
Accommodations	6
Hull and Deck Information	6
Engine Information	6
DETAILED INFORMATION	7
Deck & Hull	7
Electronics	7
Accommodations	8
Interior Equipment	9
Engines	9
Generator	10
Tankage	10
Manufacturer Provided Description	10
Dimensions	11
Disclaimer	11
Exclusions	11
Disclaimer	12
PHOTOS	13
2	13
3	13
4	13
5	13
6	13

---

7	13
8	14
9	14
10	14
11	14
12	14
13	14
14	15
15	15
16	15
17	15
18	15
19	15
20	16
21	16
22	16
23	16
24	16
25	16
26	17
27	17
28	17
29	17
30	17
31	17
32	18
33	18
34	18
35	18

---

---

36	18
CONTACTS	19
Contact details	19
Telephones	19
Office hours	19
Address	19

---

# SPECIFICATIONS

---

## Overview

---

The 370 Express Cruiser was developed by Sea Ray to be a serious, tournament-level fishing boat. This boat is a top-quality express with a big, well designed cockpit and a lavish, family friendly interior.

If you are looking for a diesel express that's as comfortable as it is functional, look no further! Powered by twin Caterpillar 3126's this boat can crank out 840HP! Also you can rely on Garmin and Raymarine navigation packages to assist in safely getting to or from those great fishing grounds.

Completed with a custom aluminum tower, this boat is immaculate and ready to put fish on board!

## Basic Information

---

**Category:** Cruiser

**Sub Category:** Express

**Model Year:** 1998

**Year Built:** 1998

**Country:** United States

## Dimensions

---

**LOA:** 37' 0" (11.28m)

**Beam:** 14' 2" (4.32m)

**Max Draft:** 3' 3" (0.99m)

## Speed, Capacities and Weight

---

**Cruise Speed:** 23 Kts. (26 MPH)

**Displacement:** 18000 Pounds

**Water Capacity:** 70 Gallons

**Holding Tank:** 28 Gallons

**Fuel Capacity:** 350 Gallons

---

## Accommodations

---

**Total Cabins:** 1

**Total Heads:** 1

---

## Hull and Deck Information

---

**Hull Material:** Fiberglass

**Hull Finish:** Plastic

---

## Engine Information

---

**Engines:** 2

**Manufacturer:** Caterpillar

**Model:** 3126

**Engine Type:** Inboard

**Fuel Type:** Diesel

---

# DETAILED INFORMATION

---

## Deck & Hull

---

- \* Arctic White Gel Coat With Rich Black and Gold Accents
- \* Aluminum Spotting Tower with Full Operating Controls and VHF
- \* Outriggers
- \* Hard Top With Isinglass
- \* Center Windshield Vent With New Motor
- \* Rocket Launcher Rod Holders
- \* Raised Bridge Deck
- \* Double Wide Companion Seat
- \* Aft Facing Seating
- \* In- Deck Fish Box
- \* Live Bait Well
- \* Wide Transom Door
- \* Fresh and Saltwater Wash Down
- \* Swim Platform

## Electronics

---

- \* Raymarine RL80C Radar
- \* Raymarine L760
- \* Garmin 7610XSV GPS
- \* Raypilot 650 Autopilot
- \* Raytheon Nav398/Loran
- \* RCL-100 Spotlight

- \* Standard Horizon Explorer VHF
- \* FloScan gauges
- \* Clarion Stereo Speakers
- \* Sony AM/FM/CD and Bluetooth Stereo

---

## Accommodations

---

### Forward Berth

- \* Beautiful Stain Free Interior
- \* Queen Size Mattress
- \* Two Hanging Lockers
- \* Under Bed Stowage
- \* Around Bed Shelving
- \* Stain and Rip Free Window Upholstery
- \* TV and Antenna Hookup on Port Side

### Galley

- \* Chip Free Lockable Cabinets
- \* Flush Glass Electric Stove Top with Spill Rail
- \* Sink with Corian Cutting Board
- \* Wrap Around tan Leather Booth With Fill In Cushing for Bed
- \* Stain and Rip Free Removable Carpet Cover

### Head

- \* Lots of Storage
- \* Easy to Reach Light switches
- \* Shower with Sliding Separation Door



---

## Interior Equipment

---

- \* SMX II AC
- \* Nova Kool Fridge/ Freezer
- \* Euro Kera Electric Stove Top
- \* Panasonic Genius Premier 1000W Microwave
- \* Panasonic TV/VCR
- \* TV Antenna Control
- \* VaccuFlush Marine Head
- \* Sony Bluetooth Stereo

---

## Engines

---

### Port

Year- 1998

Make- Caterpillar

Model- 3126

Hours- 1030

Horsepower- 420 HP

Drive- Direct

### STBD

Year- 1998

Make- Caterpillar

Model- 3126

---

Hours- 1030

Horsepower- 420 HP

Drive- Direct

---

## Generator

---

Year- 1998

Make- Westerbeke 7.5 KW

Hours- 575

---

## Tankage

---

Fuel: 350 Gal

Water: 70 GAL

Waste: 28 GAL

---

## Manufacturer Provided Description

---

The Sea Ray 370 Express Cruiser has a wide-open dual-level cockpit design, raised bridgedeck, and wide 14-foot 2-inch beam to provide a dry and safe ride. The 370 Express Cruiser has an aggressive power plant - 380 horsepower twin 454 MerCruiser inboards with fresh water cooling. Combined with a 350 gallon fuel capacity, that means it can go anywhere, and quickly. On the bridgedeck, a power adjustable double helm seat, and portside double helm seat with aft-facing seat provide the captain and guests with a view and comfort. The captain also has full command of a host of technical and safety features like a Raytheon electronics package, high water bilge pumps and alarm, plus a digital LCD systems monitor for engine diagnostics and pump monitoring. Even the dash itself has a tan gelcoat with rich burl wood accents. If fishing is the order of the day, the lower deck area features a large insulated in-floor fish box with hinged lids and pump-out to hold a sizable catch. There are four rod holders and a foldaway aft seat in the cockpit area to allow extra room for battling game when needed. The Sea Ray 370 Express Cruiser even has an entertainment center that also functions as a bait prep station with wetbar, sink, cooler, cutting board, freezer and convenient trash receptacle. Below, the cabin offers an amazing amount of storage space and room for four adults to relax without feeling cramped. The forward stateroom has a full-size bed, plenty of mirrored storage areas, and a standard

entertainment center with a TV - VCR - radio combination. In the dinette - salon area the convertible dinette can be used for sleeping space by simply stowing the table in its dedicated compartment. The list of standard features also includes granite-look countertops, deep-pile marine-grade carpet, handcrafted wood trim, and even a Clarion AM-FM digital cassette stereo with six-disc CD changer, amplifier, subwoofer, eight speakers, and a cockpit remote control. All extra gear is neatly hidden in the salon floor compartment with fold-down rod racks. The stylish galley on the 370 Express Cruiser boasts beautiful cabinetry and includes a flush-mounted two-burner electric stove, refrigerator, microwave, coffee maker, fiberglass countertop with Corian cutting board, and Grohe faucet. In the head area, there's a VacuFlush head with fiberglass settee, Corian vanity top, sink and storage, as well as a fiberglass shower with sliding curved acrylic door. The 370 Express Cruiser comes with an air conditioning and heating system, emergency start, windlass, fiberglass swim platform, Sunbrella Bimini top with boot, and vertical top storage. And for peace of mind, the 370 Express Cruiser has a remote start generator with muffler, plus an electric cockpit sole that raises the entire upper cockpit area for fast, easy engine access when needed.

## Dimensions

---

\* Cruising Speed: 23 MPH at 2200 RPM

\* Length With Platform: 41' 4"

\* Hull Length: 37"

\* Beam: 14" 2"

\* Draft: 3'3"

\* Weight: 18000 #

\* Hull Type: Deep- V

\* Deadrise Aft: 19.5 DEG

## Disclaimer

---

The Company offers the details of this vessel in good faith but cannot guarantee or warrant the accuracy of this information nor warrant the condition of the vessel. A buyer should instruct his agents, or his surveyors, to investigate such details as the buyer desires validated. This vessel is offered subject to prior sale, price change, or withdrawal without notice.

## Exclusions

---

Owner's personal belongings.

## Disclaimer

---

The Company offers the details of this vessel or yacht in good faith but cannot guarantee or warrant the accuracy of this information nor warrant the condition of the vessel. A buyer should instruct his representatives, agents, or his surveyors, to investigate such details as the buyer desires validated. This vessel or yacht is offered subject to prior sale, price change, or withdrawal without notice.

# PHOTOS

2



3



4



5



6



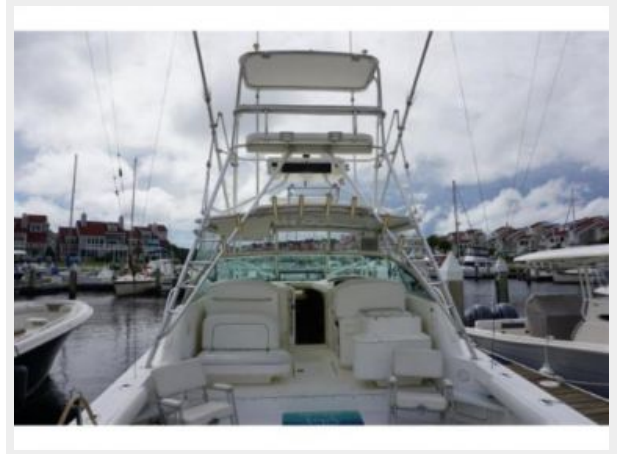
7



8



9



10



11



12



13





14



15



16



17



18



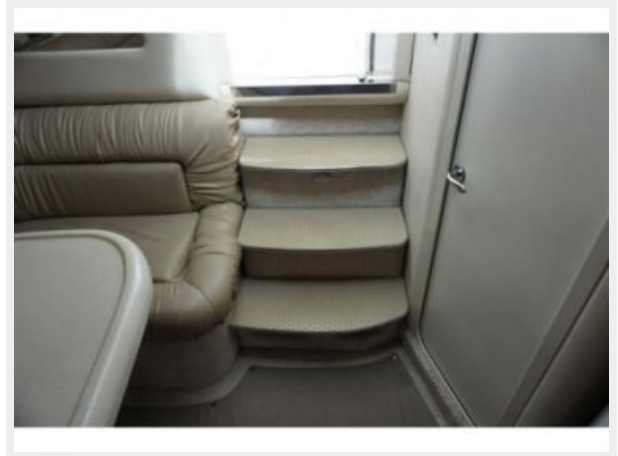
19



20



21



22



23



24



25





26



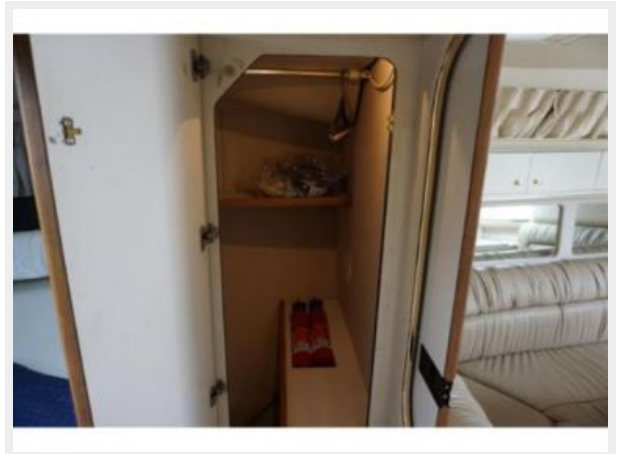
27



28



29



30



31



32



33



34



35



36



---

# CONTACTS

---

Andrey Shestakov, leading yacht broker of the sales department of Shestakov Yacht Sales Inc. Shestakov Yacht Sales Inc., the official representative of the Miami/Fort Lauderdale FL headquarters.

---

## Contact details

---

Email: [andrey@shestakovyachtsales.com](mailto:andrey@shestakovyachtsales.com)

Web: [shestakovyachtsales.com/en/](http://shestakovyachtsales.com/en/)

---

## Telephones

---

USA: +1(954)274-4435

---

## Office hours

---

Monday – Saturday: **9:00 - 21:00** EDT

Sunday: **closed**

---

## Address

---



Harbour Towne Marina, 850 NE 3rd St,  
STE 213, Dania, FL 33004