

## NUR — CUSTOM LINE



**Builder:** CUSTOM LINE

**Year Built:** 2014

**Model:** Motor Yacht

**Price:** PRICE ON APPLICATION

**Location:** Panama

**LOA:** 86' 0" (26.21m)

**Cruise Speed:** 10 Kts. (12 MPH)

**Max Speed:** 14 Kts. (16 MPH)

Our experienced yacht broker, Andrey Shestakov, will help you choose and buy a yacht that best suits your needs **NUR — CUSTOM LINE** from our catalogue. Presently, at Shestakov Yacht Sales Inc., we have a wide variety of yachts available on our sale's list. We also work in close contact with all the big yacht manufacturers from all over the world.

If you would like to buy a yacht **NUR — CUSTOM LINE** or would like help answering any questions concerning purchasing, selling or chartering a yacht, please call **+1(954)274-4435**

# TABLE OF CONTENTS

|                              |   |
|------------------------------|---|
| TABLE OF CONTENTS            | 2 |
| SPECIFICATIONS               | 4 |
| Basic Information            | 4 |
| Dimensions                   | 4 |
| Speed, Capacities and Weight | 4 |
| Accommodations               | 4 |
| Hull and Deck Information    | 4 |
| Engine Information           | 4 |
| PHOTOS                       | 5 |
| _JFM5876                     | 5 |
| _JFM5892                     | 5 |
| _JFM5867                     | 5 |
| _JFM5882                     | 5 |
| _JFM5877                     | 6 |
| _JFM5879                     | 6 |
| _JFM5883                     | 6 |
| _JFM5872                     | 6 |
| _JFM5817_1                   | 6 |
| _JFM5827 copy_1              | 6 |
| _JFM5827                     | 7 |
| _JFM5829 copy_1              | 7 |
| _JFM5830_1                   | 7 |
| _JFM5829                     | 7 |
| _JFM5834_1                   | 8 |
| _JFM5836 copy copy_1         | 8 |
| _JFM5839 copy_1              | 8 |
| _JFM5841_1                   | 8 |
| _JFM5845 copy_1              | 9 |

---

|                 |    |
|-----------------|----|
| _JFM5845        | 9  |
| _JFM5847        | 9  |
| _JFM5853        | 9  |
| _JFM5860        | 10 |
| _JFM5858        | 10 |
| _JFM5862        | 10 |
| _JFM5815 copy_1 | 10 |
| _JFM5806_1      | 11 |
| CONTACTS        | 12 |
| Contact details | 12 |
| Telephones      | 12 |
| Office hours    | 12 |
| Address         | 12 |

---

---

# SPECIFICATIONS

---

## Basic Information

---

**Category:** Motor Yacht

**Model Year:** 2014

**Year Built:** 2014

**Country:** Panama

## Dimensions

---

**LOA:** 86' 0" (26.21m)

## Speed, Capacities and Weight

---

**Cruise Speed:** 10 Kts. (12 MPH)

**Max Speed:** 14 Kts. (16 MPH)

## Accommodations

---

**Total Cabins:** 5

## Hull and Deck Information

---

**Hull Material:** Fiberglass

## Engine Information

---

**Engines:** 2

**Manufacturer:** MAN

**Model:** V10 1100 CR

**Fuel Type:** Diesel

# PHOTOS

**\_JFM5892**



**\_JFM5876**



**\_JFM5867**



**\_JFM5882**



JFM5879



JFM5877



JFM5883



JFM5872



JFM5817\_1



JFM5827 copy\_1



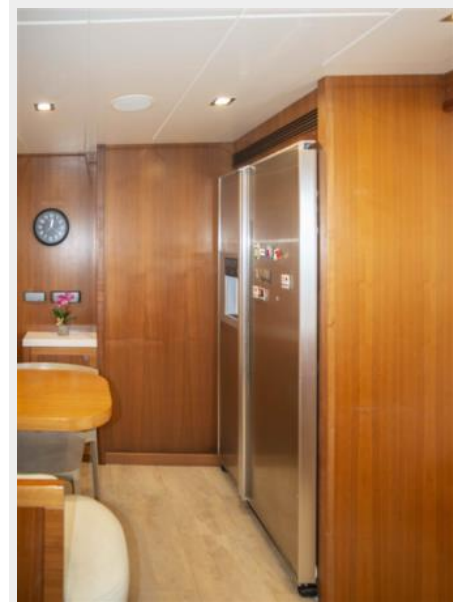
JFM5827



JFM5829 copy\_1



JFM5830\_1



JFM5829



JFM5834\_1



JFM5836 copy copy\_1



JFM5839 copy\_1



JFM5841\_1





**\_JFM5845 copy\_1**



**\_JFM5845**



**\_JFM5847**



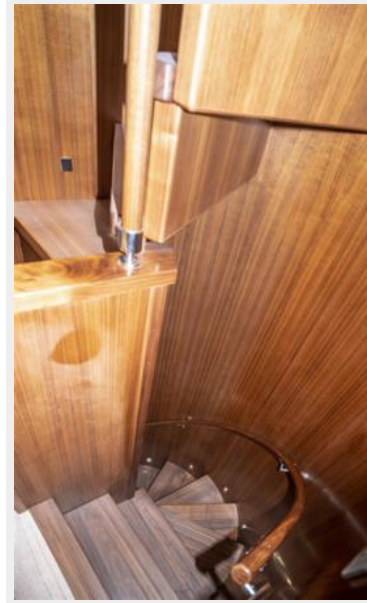
**\_JFM5853**



**\_JFM5858**



**\_JFM5860**



**\_JFM5862**



**\_JFM5815 copy\_1**



JFM5806\_1



# CONTACTS

---

Andrey Shestakov, leading yacht broker of the sales department of Shestakov Yacht Sales Inc. Shestakov Yacht Sales Inc., the official representative of the Miami/Fort Lauderdale FL headquarters.

## Contact details

---

Email: [andrey@shestakovyachtsales.com](mailto:andrey@shestakovyachtsales.com)

Web: [shestakovyachtsales.com/en/](http://shestakovyachtsales.com/en/)

## Telephones

---

USA: +1(954)274-4435

## Office hours

---

Monday – Saturday: **9:00 - 21:00** EDT

Sunday: **closed**

## Address

---



Harbour Towne Marina, 850 NE 3rd St,  
STE 213, Dania, FL 33004