

DESTINATION UNKNOWN — VIKING



Builder: VIKING

LOA: 47' 0" (14.33m)

Year Built: 1997

Beam: 14' 2" (4.32m)

Model: Cruiser

Price: PRICE ON APPLICATION

Location: United States

Our experienced yacht broker, Andrey Shestakov, will help you choose and buy a yacht that best suits your needs **Destination Unknown — VIKING** from our catalogue. Presently, at Shestakov Yacht Sales Inc., we have a wide variety of yachts available on our sale's list. We also work in close contact with all the big yacht manufacturers from all over the world.

If you would like to buy a yacht **Destination Unknown — VIKING** or would like help answering any questions concerning purchasing, selling or chartering a yacht, please call **+1(954)274-4435**

TABLE OF CONTENTS

TABLE OF CONTENTS	2
SPECIFICATIONS	5
Overview	5
Basic Information	5
Dimensions	5
Accommodations	5
Hull and Deck Information	5
Engine Information	6
PHOTOS	7
2	7
3	7
4	7
5	7
6	7
7	7
8	8
9	8
10	8
11	8
12	8
13	8
14	9
15	9
16	9
17	9
18	9
19	9
20	10

21	10
22	10
23	10
24	10
25	10
26	11
27	11
28	11
29	11
30	11
31	11
32	12
33	12
34	12
35	12
36	13
37	13
38	13
39	13
40	14
41	14
43	14
42	14
44	15
45	15
46	15
47	15
48	15
49	15

50	16
51	16
52	16
53	16
54	16
CONTACTS	17
Contact details	17
Telephones	17
Office hours	17
Address	17

SPECIFICATIONS

Overview

The Viking Sport Cruisers Flybridge is a high performance cruising yacht with a Med-Style profile and true motor yacht accommodations. The floorplan is a two-stateroom layout with the galley and dinette down and two full heads. Outside the spacious cockpit has a built-in bench seat at the transom, direct engine room access, and a walk-thru transom door. The side decks are quite wide and the flybridge is accessed via molded cockpit steps in the salon bulkhead. The bridge features lounge seating for six.

Basic Information

Category: Cruiser

Sub Category: Sport Cruiser

Model Year: 1997

Year Built: 1997

Country: United States

Fly Bridge: Yes

Dimensions

LOA: 47' 0" (14.33m)

Beam: 14' 2" (4.32m)

Accommodations

Total Cabins: 2

Total Heads: 2

Hull and Deck Information

Hull Material: Fiberglass

Engine Information

Engines: 2

Manufacturer: Caterpillar

Model: 3208 Turbo

Engine Type: Inboard

Fuel Type: Diesel

PHOTOS

2



3



4



5



6



7



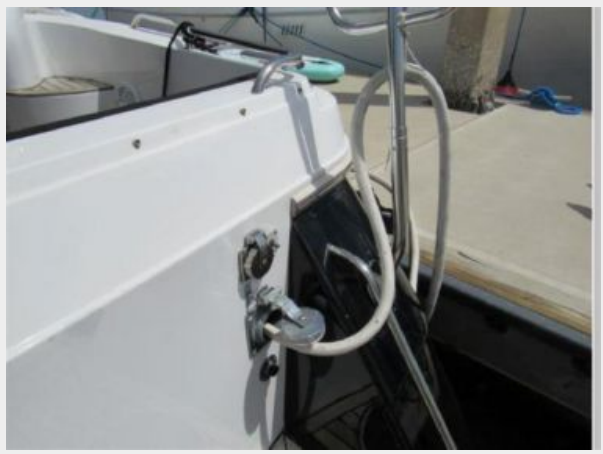
8



9



10



11



12



13



14



15



16



17



18



19



20



21



22



23



24



25



26



27



28



29



30



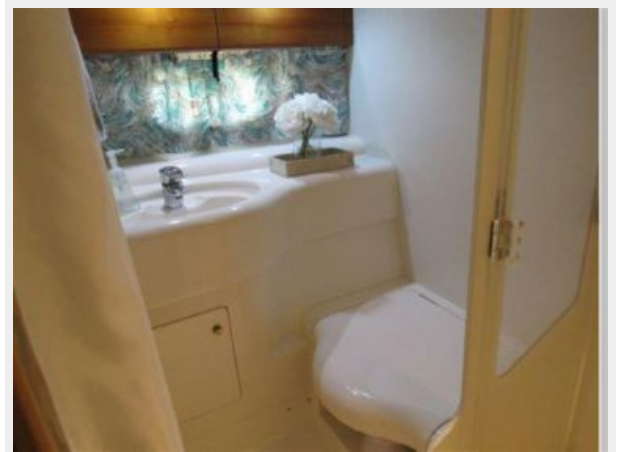
31



32



33



34



35



36



37



38



39



40



41



42



43



44



45



46



47



48



49



50



51



52



53



54



CONTACTS

Andrey Shestakov, leading yacht broker of the sales department of Shestakov Yacht Sales Inc. Shestakov Yacht Sales Inc., the official representative of the Miami/Fort Lauderdale FL headquarters.

Contact details

Email: andrey@shestakovyachtsales.com

Web: shestakovyachtsales.com/en/

Telephones

USA: +1(954)274-4435

Office hours

Monday – Saturday: **9:00 - 21:00** EDT

Sunday: **closed**

Address



Harbour Towne Marina, 850 NE 3rd St,
STE 213, Dania, FL 33004