

OCHO UNO 81 — FAIRLINE



Builder: FAIRLINE

Year Built: 2014

Model: Motor Yacht

Price: PRICE ON APPLICATION

Location: Mexico

LOA: 78' 0" (23.77m)

Beam: 23' 7" (7.19m)

Max Draft: 5' 3" (1.60m)

Our experienced yacht broker, Andrey Shestakov, will help you choose and buy a yacht that best suits your needs Ocho Uno 81 — FAIRLINE from our catalogue. Presently, at Shestakov Yacht Sales Inc., we have a wide variety of yachts available on our sale's list. We also work in close contact with all the big yacht manufacturers from all over the world.

If you would like to buy a yacht Ocho Uno 81 — FAIRLINE or would like help answering any questions concerning purchasing, selling or chartering a yacht, please call +1(954)274-4435

TABLE OF CONTENTS

TABLE OF CONTENTS	2
SPECIFICATIONS	9
Overview	9
Basic Information	9
Dimensions	10
Speed, Capacities and Weight	10
Accommodations	10
Hull and Deck Information	10
Engine Information	10
DETAILED INFORMATION	11
Descriptions and Features	11
Exclusions	23
Disclaimer	23
PHOTOS	25
1	25
2	25
3	25
4	25
6	25
5	25
7	26
8	26
10	26
9	26
11	26
12	26
13	26
14	26

15	27
16	27
17	27
18	27
19	27
20	27
21	27
22	27
23	28
24	28
25	28
26	28
27	28
28	28
29	28
30	28
31	29
32	29
33	29
34	29
35	29
36	29
37	29
38	29
39	30
40	30
41	30
42	30
43	30

44	30
45	30
46	30
47	31
48	31
49	31
50	31
51	31
52	31
53	31
54	31
56	32
55	32
57	32
58	32
59	32
60	32
36	33
37	33
38	33
39	33
40	33
41	33
42	33
43	33
44	34
45	34
46	34
47	34

48	34
49	34
50	34
51	34
52	35
53	35
54	35
55	35
56	35
57	35
58	36
59	36
60	36
61	36
62	36
63	36
64	36
65	36
66	37
67	37
68	37
69	37
70	37
71	37
72	37
73	37
74	38
75	38
76	38

73	38
74	38
75	38
76	38
77	38
78	39
79	39
80	39
81	39
82	39
83	39
84	39
85	39
86	40
87	40
88	40
89	40
90	40
91	40
92	40
93	40
94	41
95	41
96	41
97	41
98	41
99	41
100	41
101	41

102	42
103	42
104	42
105	42
106	42
107	42
108	42
109	42
110	43
111	43
112	43
113	43
114	43
115	43
116	43
117	43
118	44
111	44
112	44
113	44
114	44
115	44
116	44
117	44
118	45
CONTACTS	46
Contact details	46
Telephones	46
Office hours	46

Address

46

SPECIFICATIONS

Overview

"Ocho Uno 81" is equipped for relaxing and entertaining on a grand scale. Her huge and commanding flybridge gives the first clue to this remarkable yacht's sociable intentions.

Large, spacious entertaining areas are in evidence throughout the extensive saloon and upper deck areas, through to the private staterooms, where light and space are combined to stunning effect. All are created using only the very finest materials, including exotic woods, hand-selected granite work surfaces and state-of-the-art design features.

Four grand private staterooms combine light and space to stunning effect and as you move through the large, spacious entertaining areas you start to appreciate the wealth of well-considered features

Highlights Include:

- Spacious 4 Stateroom Layout w/ 4 Heads + 2 Crew Quarters
- Stabilized Zero Speed
- Powered with Twin Caterpillar C32 Diesels (1622HP Each)-- 325 hrs
- Twin Onan Generators
- Bow & Stern Thrusters
- Hydraulic Swim Platform
- Passerelle
- Bridge Davit System for Tender
- Upgraded Bang & Olufsen Sound System
- Teak Decks
- Upgraded Garmin Electronics Package

This boat shows like new both inside and out. Full time crew of 4.

Basic Information

Category: Motor Yacht

Model Year: 2014

Year Built: 2014

Country: Mexico

Fly Bridge: Yes

Cockpit: Yes

Dimensions

LOA: 78' 0" (23.77m)

Beam: 23' 7" (7.19m)

Max Draft: 5' 3" (1.60m)

Speed, Capacities and Weight

Water Capacity: 301 Gallons

Fuel Capacity: 1557 Gallons

Accommodations

Total Cabins: 4

Hull and Deck Information

Hull Material: Fiberglass

Engine Information

Engines: 2

Manufacturer: Caterpillar

Model: C 32

Engine Type: Inboard

Fuel Type: Diesel

DETAILED INFORMATION

Descriptions and Features

Salon

The salon is entered via twin stainless-steel sliding doors on centerline with twin fixed sidelights making the entire aft bulkhead glass. Full drapes cover them as needed.

Immediately to port is a two-person loveseat upholstered in sandstone leather. A built-in high gloss teak end table with a small table lamp is in the aft corner. Next forward, facing the centerline is a matching L shaped leather sofa. The coffee table is African cherry wood with huge storage.

To starboard starting aft are two access panels for TV equipment. Next forward is a satin maple cabinet for bar ware. Further forward is a 50" Samsung TV that can be viewed in the down position, or at the touch of a button, it raises above the countertop. Next forward is a matching satin maple glass ware cabinet. Further forward is a glass front bar cabinet for liquor storage.

The sole is carpet

Windows are covered with "Electric Automatic" blinds.

Dining

Up one step to starboard is a high gloss African cherry wood expandable table with a leather sofa.

Outboard is a large side window covered with wooden mini blinds. The main electric panel is also in this area.

A wood plank sole.

The open Galley is to port.

Galley

A center island separates the galley from the centerline companionway.

The galley is "U" shaped and includes the following equipment:

Wood plank sole

Island with slide-out cabinets for dish storage

Three (3) dedicated lights over island

Whirlpool stainless steel dual microwave and oven

Mielle dishwasher

Trash compactor

Three (3) subzero refrigerator drawers

One (1) subzero freezer drawer

Undermount stainless steel sink with prep area

Pull out trash bin

Pull out storage shelves behind high gloss teak doors

Black granite counter top

Whirlpool 4-burner ceran-top cook top

Whirlpool galley vent with work light

Side window with blind

Breakfast Bar

One step up forward of the galley is a wood sole with an entry door to the port side deck area.

A wrap around granite countertop with two (2) freezer doors underneath

Two (2) stools with an excellent forward through the windshield.

The lower helm is to starboard.

Lower Helm

Zero Speed Stabilizer

Garmin GPS Map x1

Wood and leather tilt steering wheel

Garmin GPS Map x1

Garmin GPS Map x2

min remote speaker

Garmin speed depth log

ACR Spotlight

Master volt battery monitor

Two (2) master Seakeeper controls

Sea Fire engine override system

12 volt accessory outlet

Side power integrated bow/stern thruster

Key start/stop switches

Lewmar chain counter

ZF electronic engine controls

Windlass switches

Master volt inverter control

Wiper controls

Battery parallel switch

Five (5) lighted bilge pump switches

Small LCD engine displays

Analog VDO engine gauges at flip up (electric) panel

Two (2) VDO fuel gauges

VDO water tank gauge

Two (2) water maker remote panels

Small glove box

Key switches for two (2) black water discharge pumps

Two (2) leather Recaro helm seats on teak pedestals

Three (3) overhead DC lights

5" Danforth magnetic compass

Four (4) AC vents

Side deck pantograph door

Centerline Companionway

The centerline companionway leads to all four staterooms. Five carpeted steps with a handrail lead to below. The windshield above allows lots of natural light into the area.

At the bottom of the steps, one can go forward into the VIP stateroom, port into the port twin guest stateroom, starboard into the starboard twin guest stateroom, or aft and down three steps to the master suite.

A hidden curved door into the port side head allows it to serve as a day head as well as the head for both twin staterooms.

VIP Stateroom

All the way forward is the spacious VIP stateroom. Centerline is a queen size berth with an upholstered headboard and two reading lights affixed to the forward teak high gloss bulkhead. Port and starboard built in shelves serve as nightstands.

Carpeted steps make access to the berth easy. There are four drawers facing aft at the foot of the berth.

To both port and starboard above the shelves are two opening stainless-steel Trend portholes behind wooden mini blinds. Under the shelves are four (4) opening lockers,

BOSE stereo

Flat screen TV

Aft to port and starboard is a full size, auto lit hanging locker.

The sole has a hatch to the bow thruster.

Above are twin deck hatches with sliding screens, a digital AC control, and seven (7) halogen mini spots.

One step aft and down is the private entrance to the VIP head.

VIP Head

The ensuite VIP head is surprisingly large. The sole is a wood laminate. The vanity has two satin maple doors below a Corian like counter above. The sink is a white china vessel type above counter top sink with a bulkhead faucet. Above is a mirror and a medicine cabinet.

The stall shower has a curved clear tempered glass door, a teak grate sole, a teak bench, a rain type overhead shower fixture as well as a handheld fixture.

The toilet is a vacu-flush model. Also, in the head is a storage cabinet, an extractor fan, a Trend opening porthole with wooden mini blinds, and five (5) overhead mini spots.

Master Stateroom

The Master Stateroom is in the center of the boat, which is the widest and quietest area of the boat.

Upon entering, there is a custom king size berth on centerline facing forward. The curved aft bulkhead has a padded headboard, twin reading lights, and two (2) small triangular nightstands with shelves below.

There are two (2) storage drawers port and two (2) starboard under the berth. Above the berth is a decorative oval mirror with the cabin's remaining headliner designed in curved patterns to add a nice decorative touch.

To the port side, starting aft, is a full size door into a walk-in hanging locker with a full size dressing mirror, four (4) teak drawers, two (2) fixed Trend dead lights covered with wooden mini blinds.

Next forward is a teak high gloss counter top with three (3) drawers aft, a vanity forward with a large flip-up mirrored section, and four (4) curved storage cabinets. The area can also serve as an office with a dedicated inverter outlet for a computer, a DC outlet and a stool.

Above are two (2) Trend dead lights flanking a center opening porthole. All three in matching size and covered with wooden mini blinds.

Towards centerline is a Samsung flat screen TV and a Sony Blu-ray DVD player. Below, behind a teak door, is a small Isotherm drink refrigerator.

On the ceiling are two (2) BOSE speakers

To starboard is a large settee with a satin maple wood end table and storage drawer.

Above is a matching window treatment with three (3) portholes, the center of which opens, all behind wooden mini blinds.

Aft is a door matching the walk-in closet leading to the master head.

Also in the cabin are thirteen LED dimmers, a carpeted sole with hatches to necessary services areas all trimmed in stainless steel and a hidden Bose sub-woofer for surround sound.

Master Head

The Master Head extends 70% across the beam of the boat and is accessed from the starboard side.

Immediately upon entry is the vanity with two (2) satin maple cabinets below with a Corian like countertop above. Two (2) white china vessel type sinks are above the countertop with bulkhead mounted faucets.

Above the sinks, behind the blinds are twin stainless-steel trend opening portholes.

Twin beveled-edge dressing mirrors are on the aft bulkhead.

The sole is wood laminate.

The toilet is a vacu-flush model and has a matching bidet adjacent.

There is a large jacuzzi bathtub with shower and has two (2) body sprays as well as a handheld or wall mounted fixture. The door is a clear tempered glass hinged door with a sidelight.

Port Guest Stateroom

The Port Guest Stateroom is entered from the forward end with the twin berths facing forward off the aft bulkhead.

The inboard berth has two (2) storage drawers below. The outboard berth has one (1) drawer.

Between is a single drawer nightstand that extends to the overhead with two (2) small cabinet doors and a BOSE stereo. Further above are two open shelves and the cabin's AC vent.

Each berth has a directional reading light.

Pullman bunk bed

Above the outboard berth are six (6) high gloss teak cabinet doors and two (2) opening stainless steel Trend portholes behind wooden blinds.

At the foot of the outboard berth is a full size auto lit hanging locker.

On the outside of the hanging locker is a flat screen TV. The cabin has dedicated AC controls.

Also in the cabin are two (2) Clarion speakers, and a full-size dressing mirror forward.

All the way forward us the entrance to the shared guest head.

Starboard Stateroom

The Starboard Guest Stateroom has twin berths.

The inboard berth has two (2) storage drawers below. The outboard berth has one (1) drawer.

Between is a single drawer nightstand that extends to the overhead with two (2) small cabinet doors and a BOSE Stereo. Further above are two open shelves and the cabin's AC vent.

Each berth has a directional reading light.

Above the outboard berth are six (6) satin maple wood cabinet doors and two (2) opening stainless steel Trend portholes behind wooden mini blinds.

At the foot of the outboard berth is a full size auto lit hanging locker.

There are removable sections, stored in the closet, that can fill in between the twin berths to make one queen size berth.

On the outside of the hanging locker is a flat screen TV. The cabin has dedicated AC controls.

All the way forward us the entrance to the shared guest head.

Guest Head

The Guest Head has two (2) access doors allowing it to serve both twin guest cabins as well as the day head.

This head is also surprisingly large.

The sole is a wood laminate. The vanity has two satin maple wood doors below a Corian like counter above. The sink is a white china vessel type above countertop sink with a bulkhead faucet. Above is a mirror and medicine cabinet.

The stall shower has a curved clear tempered glass door, a teak grate sole, a teak bench, a rain type overhead shower fixture as well as a handheld fixture.

The toilet is a vacu-flush model. Also, in the head are two storage cabinets, an extractor fan, a Trend opening porthole.

Foredeck

Wide walk-around side decks lead to the Foredeck

Stainless steel bow rails and stanchions

Pennant staff at bow

Lewmar all chain windlass

Suncor/Delta anchor with 200' stainless steel chain rode

Stainless steel anchor davit with bow roller

Up and down foot switches for windlass

Port and starboard deck access to anchor locker

Bow fairleads forward

Multiple freeing ports

Dual spring line cleats

Port and starboard hinged rail breaks

Port and starboard hinged top storage lockers, open across entire beam below

Sunbrella sun lounge cushions with cover

Two (2) deck hatches to forward cabin

Two (2) windshield wipers and washers

Fresh water wash down at chain locker

Built-in dunnage boxes

Overhead deck lights port and starboard

Courtesy blue LED low level deck lights

International navigation lights

Two (2) waste deck fittings

Port side entry door to galley with pantograph door

Side deck engine air intakes

Teak over fiberglass decks

Flybridge Helm

Teak over fiberglass decks

Full bridge and seating cover

Plexi wind screen with venturi section

Helm cover

4" magnetic compass

Garmin GPS Map

Garmin GPS Map

VHF Radio with Garmin remote speaker

Garmin speed depth log

Master volt battery monitor

VDO analog engine gauges

VDO rudder angle indicator

Engine start/stop switches with alarms

Stereo

Two (2) VDO Analog fuel gauges

Trim tab controls

Windlass controls

Horn button

Lewmar chain counter

Sea Fire engine shutdown override system

Tilt helm wheel

ZF Electronic single lever engine controls

12 volt outlet

Two (2) cup holders

Side power integrated bow/stern thruster controls

Twin helm seat and companion seat

Flybridge Deck Equipment

Hydraulic Electric Bimini top

Bench seating forward with storage below, port and aft

Isotherm refrigerator compressor in port seating

Blue LED low level courtesy lights port and starboard

"U" shaped seating aft with Sunbrella cushions and storage below to starboard

Large teak hi-lo table

Companionway to aft deck below with hinged fiberglass cover

Wet bar to port with sink, storage locker, and electric grill, Corian counter, Isotherm cold box, Isotherm refrigerator, trash container plus canvas cover

Teak over fiberglass decks

Crew Cabin

Entrance/egress aft transom with doggable door

Three (3) teak trimmed entry steps

Shore power and generator control panel with acrylic cover

DC distribution panel

Hinged Engine Room door

Digital AC controls

Escape hatch to aft deck with five (5) step deployable teak and stainless steel ladder

Upholstered overhead panels

Two (2) emergency lights

Flat screen TV

Sharp microwave oven

Clothes washer/dryer

Two (2) single berths with upholstered keepers

Storage cabinets port outboard

Access to isolation transformer port

Fiberglass water tank below aft berth

Polyethylene waste tank below forward berth

Crew Head

Fiberglass compartment with mica surfaces

Jabsco electric marine toilet

Vented blower

Three (3) overhead halogen mini spots

Teak sole and shower grate

Tank Watch 4 waste tank monitor

Tank Watch 4 discharge pump control

Vanity with storage cabinet, composite top with under mount sink, faucet, and hand held shower fixture

Vanity mirror

Shower curtain and slide track

Access panels to outboard access and Crew Laundry

Lazarette

Black water pump and sea cock

Rudders steering gear with single hydraulic steering actuator

Autopilot feedback sensor

Two (2) trim tab pumps

Two (2) Seakeeper Gyrostabilizers

Air con raw water supply pump

High water alarm

Side power stern thruster with hydraulic motor

Compartment light

TNT hydraulic platform lift pump

Engine Room

T/CAT C-32 1625 HP diesels 325 hours

Two (2) Seafari water makers

Engine Room vent fans port and starboard

Dual Racor 1000 fuel filters for each engine with vacuum gauges

Two (2) Racor spin-on fuel filters for generator

ZF Cruise Command junction box

Hypro Marine hydraulic steering system

Fresh water spigot with hose

Two (2) fuel tank site gauge

Fuel manifold with crossover valves

High water alarm system

CAT direct reading gauge panels

Six (6) overhead fluorescent lights

Air con raw water pump and strainer

Reverse oil pump

Overhead escape hatch, centerline aft

Fiberglass exhaust mufflers for main engines

Generator mufflers

Sea Fire FM 2000 cylinder

Tides Marine main engine shaft seals

Stainless steel water heater

2 3/4" propeller shafts

Besenzoni passerelle manual controls

Central hydraulic power pack with manual pressure pump driven off both transmissions

Two (2) HRO watermakers

Electric water heater

Freshwater pump w/stainless steel accumulator tank

Gas/water separation for generators

ZF 2050-A 2.467 to 1 transmission ratio

Walker Airsteps on main engines

Two (2) Marine Air chilled water AC compressors

Five (5) auto manual bilge pumps

Side power hydraulic bow thruster

Side power hydraulic stern thruster

Coolant recovery bottles for main engines

Exclusions

Owner's personal belongings.

Disclaimer

The Company offers the details of this vessel or yacht in good faith but cannot guarantee or warrant the accuracy of this information nor warrant the condition of the vessel. A buyer should instruct his representatives, agents, or his surveyors, to investigate such details as the buyer desires validated. This vessel or yacht is offered subject to prior sale, price change, or withdrawal without notice.

PHOTOS

1



2



3



4



5



6



7



8



9



10



11



12



13



14



15



16



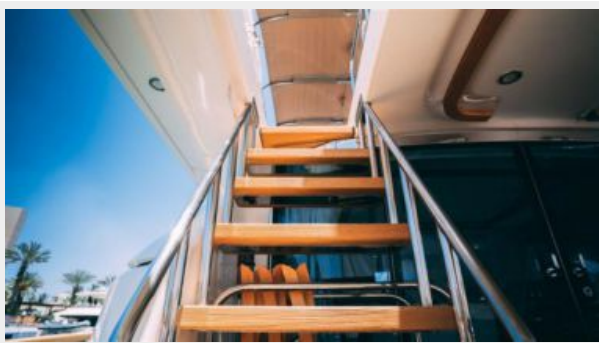
17



18



19



20



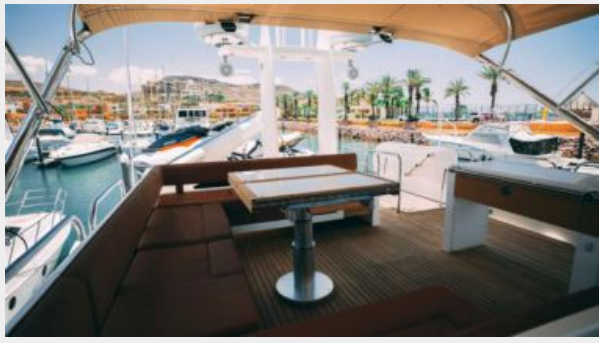
21



22



23



24



25



26



27



28



29



30



31



32



33



34



35



36



37



38



39



40



41



42



43



44



45



46



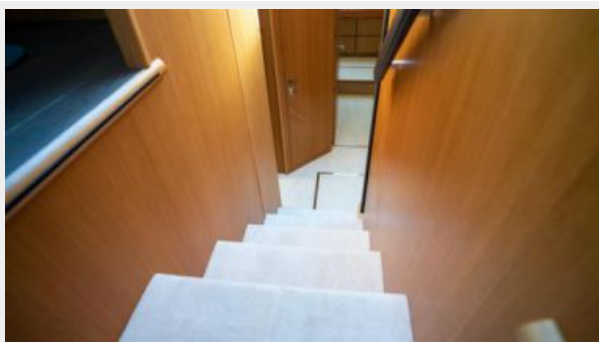
47



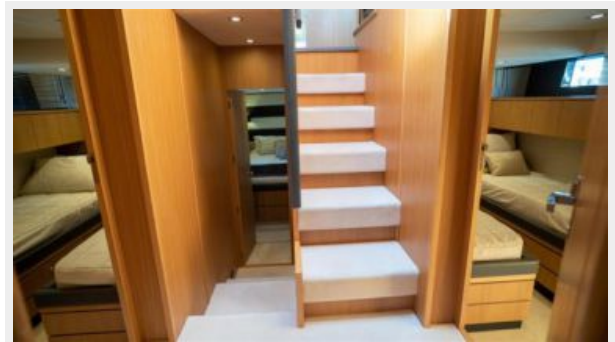
48



49



50



51



52



53



54



55



56



57



58



59



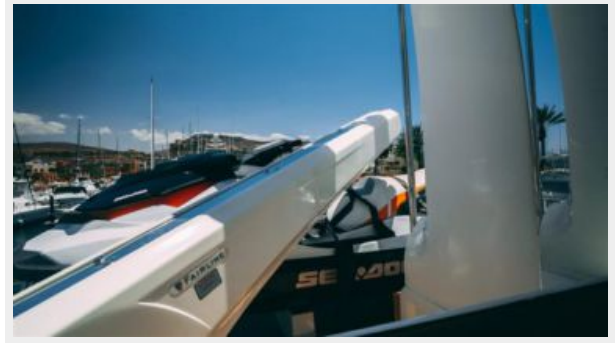
60



36



37



38



39



40



41



42



43



44



45



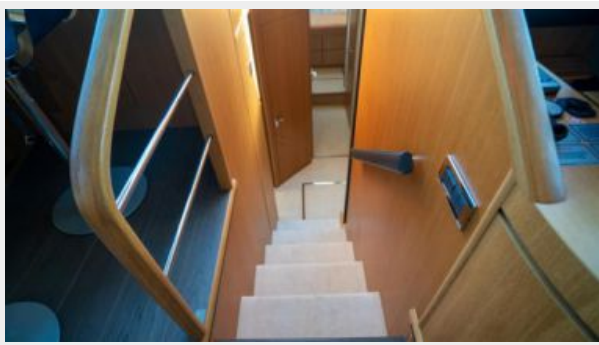
46



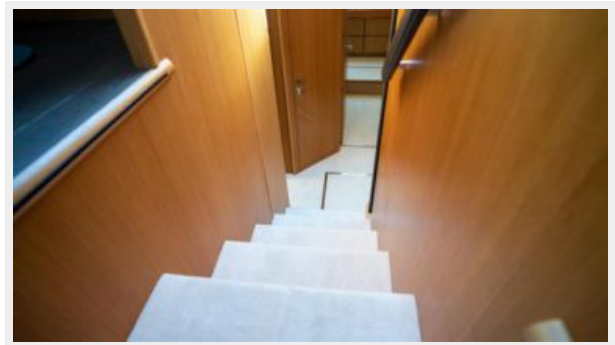
47



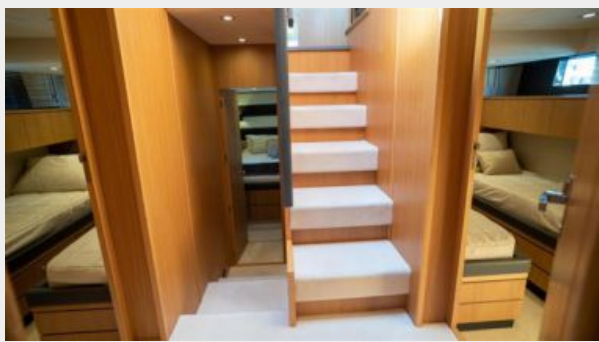
48



49



50



51



52



53



54



55



56



57



58



59



60



61



62



63



64



65



66



67



68



69



70



71



72



73



74



75



76



73



74



75



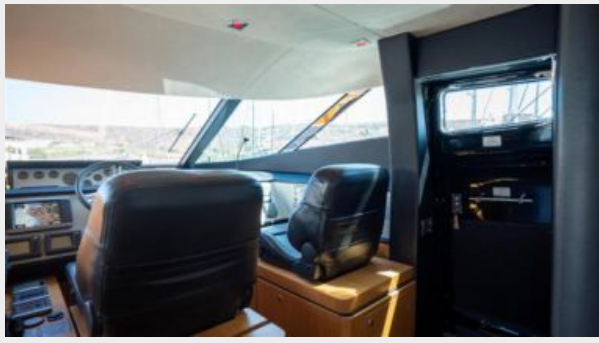
76



77



78



79



80



81



82



83



84



85



86



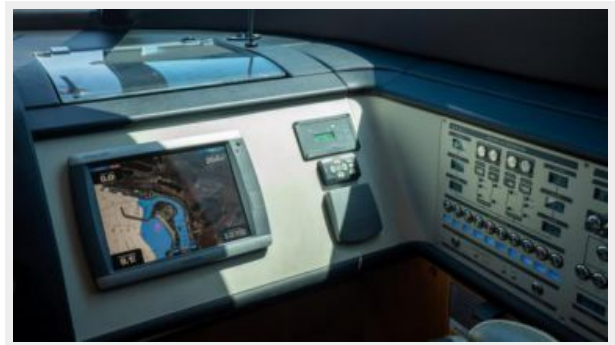
87



88



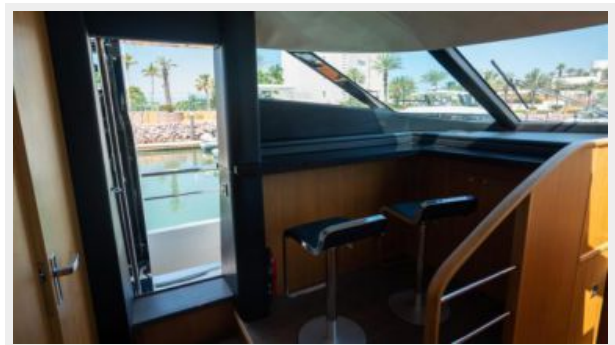
89



90



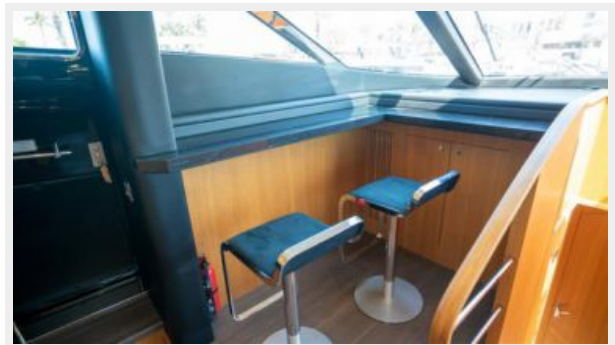
91



92



93



94



95



96



97



98



99



100



101



102



103



104



105



106



107



108



109



110



111



112



113



114



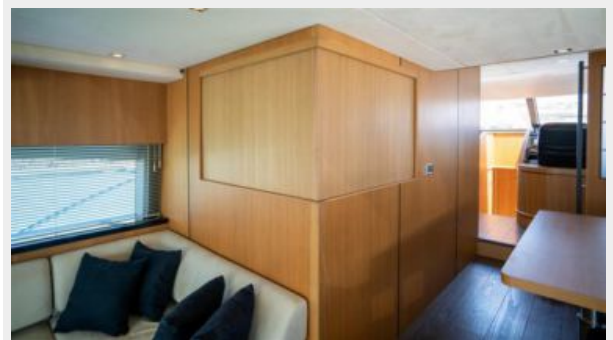
115



116



117



118



111



112



113



114



115



116



117



118



CONTACTS

Andrey Shestakov, leading yacht broker of the sales department of Shestakov Yacht Sales Inc. Shestakov Yacht Sales Inc., the official representative of the Miami/Fort Lauderdale FL headquarters.

Contact details

Email: andrey@shestakovyachtsales.com

Web: shestakovyachtsales.com/en/

Telephones

USA: +1(954)274-4435

Office hours

Monday – Saturday: **9:00 - 21:00** EDT

Sunday: **closed**

Address



Harbour Towne Marina, 850 NE 3rd St,
STE 213, Dania, FL 33004