

"AQUATHERAPY" — ALBIN



Builder: ALBIN

Year Built: 2006

Model: Sport Yacht

Price: PRICE ON APPLICATION

Location: United States

LOA: 39' 9" (12.12m)

Beam: 13' 0" (3.96m)

Min Draft: 3' 6" (1.07m)

Max Draft: 3' 9" (1.14m)

Cruise Speed: 20 Kts. (23 MPH)

Max Speed: 24 Kts. (28 MPH)

Our experienced yacht broker, Andrey Shestakov, will help you choose and buy a yacht that best suits your needs "AquaTherapy" — ALBIN from our catalogue. Presently, at Shestakov Yacht Sales Inc., we have a wide variety of yachts available on our sale's list. We also work in close contact with all the big yacht manufacturers from all over the world.

If you would like to buy a yacht "AquaTherapy" — ALBIN or would like help answering any questions concerning purchasing, selling or chartering a yacht, please call +1(954)274-4435

TABLE OF CONTENTS

TABLE OF CONTENTS	2
SPECIFICATIONS	3
Basic Information	3
Dimensions	3
Speed, Capacities and Weight	3
Accommodations	3
Hull and Deck Information	4
Engine Information	4
DETAILED INFORMATION	5
Detailed Description	5
Walk-Thru Description	5
Electrical System	6
Engine/Mechanical	6
Electronics	7
Exclusions	7
Disclaimer	7
PHOTOS	8
Albin 40 North Sea Cutter Layout	18
CONTACTS	19
Contact details	19
Telephones	19
Office hours	19
Address	19

SPECIFICATIONS

Basic Information

Category: Sport Yacht

Sub Category: High Performance

Model Year: 2006

Year Built: 2006

Country: United States

Coast Guard #: 1206304

Fly Bridge: Yes

Cockpit: Yes

Dimensions

LOA: 39' 9" (12.12m)

LOD: 38' 6" (11.73m)

Beam: 13' 0" (3.96m)

Min Draft: 3' 6" (1.07m)

Max Draft: 3' 9" (1.14m)

Clearance: 19' 6" (5.94m)

MFG Length: 39' 9" (12.12m)

Speed, Capacities and Weight

Cruise Speed: 20 Kts. (23 MPH)

Cruise Speed Range: 480

Max Speed: 24 Kts. (28 MPH)

Max Speed Range: 290 Kts.

Displacement: 50000000 Pounds

Water Capacity: 200 Gallons

Holding Tank: 40 Gallons

Fuel Capacity: 400 Gallons

Fuel Consumption: 24 Gallons

Accommodations

Total Cabins: 2

Total Berths: 4

Sleeps: 6

Total Heads: 2

Hull and Deck Information

Hull Material: Fiberglass

Deck Material: Fiberglass

Hull Configuration: Semi-Displacement

Hull Color: Dark Ocean Blue Hull/White
Topsides

Hull Finish: Aluminum

Hull Designer: Albin Marine

Interior Designer: Custom by Owner

Engine Information

Engines: 2

Manufacturer: Yanmar

Model: 6LYA-STP 370

Engine Type: Inboard

Fuel Type: Diesel

DETAILED INFORMATION

Detailed Description

JUNE 2021 ~ It's Spring!! Cast off from COVID, and head offshore in this gorgeous North Sea Cutter by Albin. This is a highly sought after model offering a 'trawler-like' exterior appearance, but performing on her semi-displacement hull very much like a fast cruiser. Overall, she's a very practical and solid yacht, exceptionally well built, designed and easily maneuverable. The floorplan is uniquely arranged with the spacious master stateroom forward, and a large guest stateroom (or private office) aft. The master shower/head are separate, and the aft head is private and convenient to the aft cabin. The surprisingly large open cockpit affords space for lounging, preparations for fun water sports, or fishing. The owners have meticulously maintained this lovely North Sea Cutter, adding top grade soft goods, a new flybridge enclosure, new cushions, and very expensive custom rail webbing all around for kid and pet safety. The main fuel tank was replaced two years ago, and all components are fully functional. Power & Motoryacht completed a full evaluation of the 40 North Sea Cutter in November 2017, to rave reviews. This is a unique and handsome yacht not to be missed!

Walk-Thru Description

PLEASE COME ALONG on a virtual walk-thru of this exceptional North Sea Cutter:

In general, "AquaTherapy" is a C. Raymond Hunt designed 2006 40' Albin North Sea Cutter, hull number 6. She offers low-hour Yanmar 370 turbodiesels, with an Onan 8kw generator. A bowthruster is installed, and her interior is simply gorgeous.

All the way aft from the swimplatform, you walk through a transom gate onto the large, open aft deck. From there, you can go forward on either side deck quite easily. Note, the current owners have installed custom woven netting all around, with custom attachments, for safety of small kids and animals.

You step up to the trunk cabin and flybridge from the starboard side deck, or walk forward on either side to the foredeck or salon side deck access door.

Once inside the salon, you'll find the lower helm to starboard, with excellent visibility, master stateroom entrance forward, and side deck port access door. The newly-upholstered settee included a hi/lo folding teak table. The galley is to starboard, and ladder to the aft stateroom/office is aft.

Her forward master stateroom features a queen island berth, separate ensuite head and tub/shower.

The aft stateroom is designed with a wrap-around settee that converts to a double berth. The compartment features an ensuite head. There are four portlights, ladder to the aft deck, screens

for the ports, storage drawers and lockers, including a hanging locker, all beautified with a teak & holly sole.

The aft deck has a non-skid sole, transom gate to the fiberglass boarding platform, hot/cold fresh water shower/washdown; stainless steel rails on teak toe rails, rod holders, deck storage box, lazarette access, molded-in steps to each side deck, and a striking door design to the aft cabin.

The fully-equipped galley is located to starboard in the salon, and is equipped with a Princess 3-burner electric cooktop and oven; Tundra 12/24v refrigerator/freezer; GE microwave oven, stainless steel sink, storage cabinets and overly-ample additional storage.

The flybridge is protected by a fiberglass hardtop, with full Stratoglass enclosure, non-skid deck, console with spacious storage space, an L-shaped settee with storage under. There are two Arrigoni helmseats permanently deck-mounted.

Electronics and entertainment equipment and features are enumerated below.

Electrical System

- Onan MDKAV-5668618 9KW Generator
- ProMariner ProNautic 1260 C3 Battery Charger
- Perko Battery Switch
- 6x8D AGM Batteries
- 2 Hitachi 12vdc 80Amp Alternators
- 50 Amp Shorepower Cord
- 12vdc outlets in salon and flybridge

Engine/Mechanical

- Twin Yanmar 6LYA-STP 370hp Turbodiesel Engines
- Fewer than 600 hours from new
- Professionally maintained throughout their service life
- ZF 220-A Gearboxes
- Propellers - 4 Blade Bronze
- Morse Engine Controls
- Groco Sea Strainers
- Racor 900 FH Fuel Filter for each main engine
- Racor 500 MA Fuel Filter for Onan Generator
- (3) Rule Bilge Pumps - Automatic and Manual operation
- Fire Extinguishers in strategic locations throughout

Electronics

- RAYMARINE E120 Multi-function display (flybridge)
- RAYMARINE Radar 48-mile
- RAYMARINE E80 Multi-function display (lower helm)
- RAYMARINE ST70 Autopilot (lower helm and flybridge)
- STANDARD HORIZON Eclipse VHF Radio both stations
- STANDARD HORIZON VLH-3000 Loudhailer on flybridge
- DANFORTH Magnetic Compass
- VDO Rudder Angle Indicator both stations
- WEEMS & PLATH Clock and Barometer

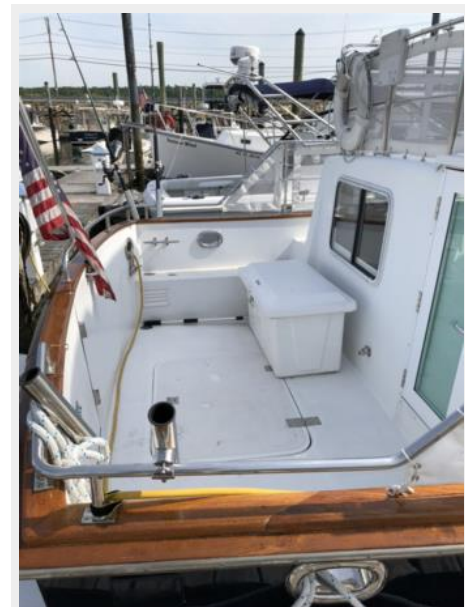
Exclusions

Owner's personal belongings.

Disclaimer

The Company offers the details of this vessel or yacht in good faith but cannot guarantee or warrant the accuracy of this information nor warrant the condition of the vessel. A buyer should instruct his representatives, agents, or his surveyors, to investigate such details as the buyer desires validated. This vessel or yacht is offered subject to prior sale, price change, or withdrawal without notice.

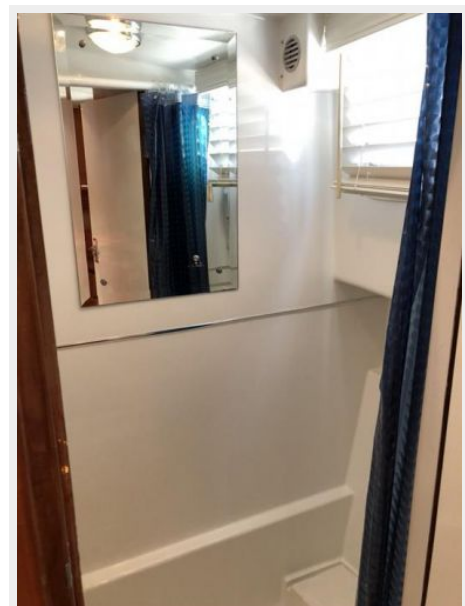
PHOTOS

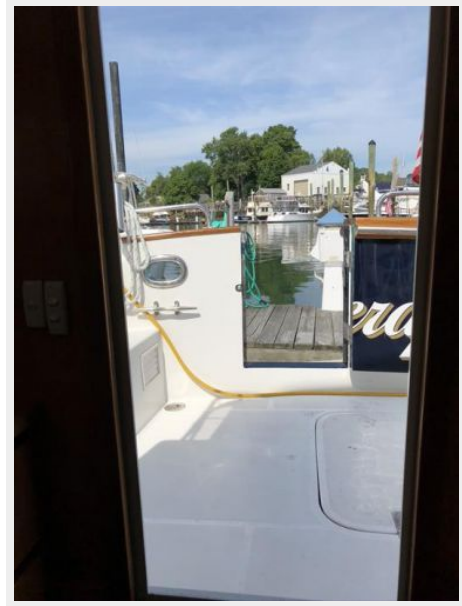




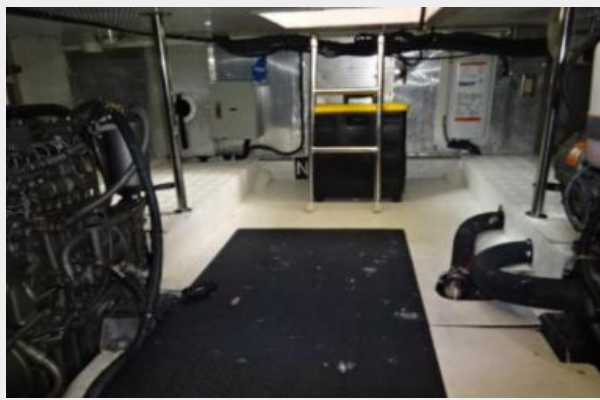




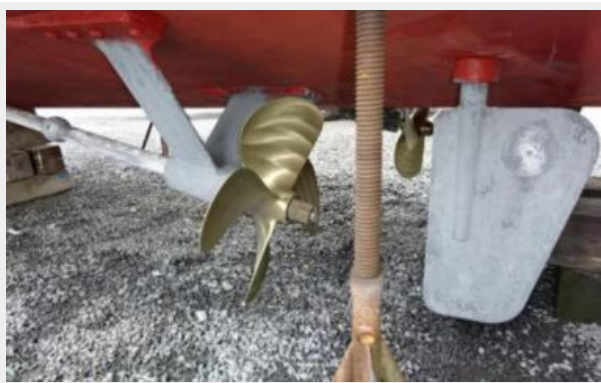












Albin 40 North Sea Cutter Layout



CONTACTS

Andrey Shestakov, leading yacht broker of the sales department of Shestakov Yacht Sales Inc. Shestakov Yacht Sales Inc., the official representative of the Miami/Fort Lauderdale FL headquarters.

Contact details

Email: andrey@shestakovyachtsales.com

Web: shestakovyachtsales.com/en/

Telephones

USA: +1(954)274-4435

Office hours

Monday – Saturday: **9:00 - 21:00** EDT

Sunday: **closed**

Address



Harbour Towne Marina, 850 NE 3rd St,
STE 213, Dania, FL 33004