

EXALTATION — ISLAND PACKET YACHTS



Судостроитель:
ISLAND PACKET YACHTS

Год постройки: 2001

Модель: Крейсерская яхта

Цена: ЦЕНА ЯХТЫ ПО ЗАПРОСУ

Местонахождение: United States

Длина общая: 42' 7" (12.98m)

Ширина: 14' 3" (4.34m)

Купить Exaltation — ISLAND PACKET YACHTS а также выбрать подходящую вам яхту из нашего каталога яхт вам поможет опытный яхтенный брокер Андрей Шестаков. На сегодняшний день компания Shestakov Yacht Sales Inc. имеет большое количество яхт в собственном списке продаж, а также тесно сотрудничает со всеми крупными яхтенными производителями по всему миру. Для того чтобы купить яхту Exaltation — ISLAND PACKET YACHTS а также проконсультироваться по любому вопросу связанному с покупкой, продажей, чартером яхт позвоните по телефону **+7(918)465-66-44**.

ОГЛАВЛЕНИЕ

ОГЛАВЛЕНИЕ	2
ХАРАКТЕРИСТИКИ	5
Обзор	5
Основная информация	5
Размеры	5
Скорость, вместимость и масса	5
Размещение	5
Корпус и палуба	6
Информация о двигателе	6
ПОДРОБНОЕ ОПИСАНИЕ	7
Overview	7
Исключения	13
Отказ от ответственности	13
ФОТОГРАФИИ	14
photo 02	14
photo 03	14
photo 04	14
photo 05	14
photo 06	14
photo 07	14
photo 08	15
photo 09	15
photo 10	15
photo 11	15
photo 12	15
photo 13	15
photo 14	16
photo 15	16

photo 16	16
photo 17	16
photo 18	16
photo 19	16
photo 20	17
photo 21	17
photo 22	17
photo 23	17
photo 24	17
photo 25	17
photo 26	18
photo 27	18
photo 28	18
photo 29	18
photo 30	18
photo 31	18
photo 32	19
photo 33	19
photo 34	19
photo 35	19
photo 36	19
photo 39	19
photo 40	20
photo 41	20
photo 42	20
photo 43	20
photo 44	20
photo 45	20
photo 46	21

photo 47	21
photo 48	21
photo 49	21
photo 50	21
photo 51	21
photo 52	22
photo 53	22
photo 54	22
photo 55	22
photo 56	22
photo 57	22
photo 58	23
photo 59	23
photo 60	23
photo 61	23
photo 62	23
photo 63	23
photo 64	24
photo 65	24
КОНТАКТЫ	25
Контактная информация	25
Телефоны	25
Время работы	25
Адрес	25

ХАРАКТЕРИСТИКИ

Обзор

Exceptional fresh water boat, that has had the best of care. Don't miss this rare opportunity. This is a well maintained and equipped cruiser that shows like new. She is loaded with style, strength, comfort and performance. She will please whether day sailing or cruising. Two heads, two staterooms and a large main salon with Island Packet's bulkhead stored table make the 420 a luxurious comfortable yacht. Her improved hull, keel and sail plan give the 420 amazing performance

Основная информация

Тип судна: Крейсерская яхта

Модельный год: 2001

Год постройки: 2001

Страна: United States

Размеры

Длина общая: 42' 7" (12.98m)

Длина по ватерлинии: 34' 7" (10.54m)

Ширина: 14' 3" (4.34m)

Длина привального бруса: 42' 0"
(12.80m)

Скорость, вместимость и масса

Водоизмещение: 30000 Pounds

Вместимость воды: 250 Gallons

Вместимость сточного бака: 60 Gallons

Объем топливного бака: 160 Gallons

Размещение

Всего кают: 2

Спальные места: 7

Всего ком. состава: 2

Корпус и палуба

Материал корпуса: Fiberglass

Информация о двигателе

Двигатели: 1

Производитель: Yanmar

Модель: 4JH3TBE

Тип двигателя: Inboard

Тип топлива: Diesel

ПОДРОБНОЕ ОПИСАНИЕ

Overview

Accommodations and Comments

This one owner freshwater boat is in exceptional condition. It has been stored in heated storage during winter lay-up (boat and mast) and been professionally maintained and upgraded by the Island Packet dealership and a knowledgeable owner. The spacious and very livable accommodations feature a beautiful varnished teak interior, furniture quality satin varnish, a teak and holly cabin floor and upgraded UltraLeather interior cushions. The floor plan has a very accommodating two head and two-stateroom layout (plus salon accommodations) which is perfect for quests or family. Along with the great layout the boat has ample storage throughout all areas.

The 420 was designed by Island Packets Bob Johnson as a performance cruising yacht. The yacht is a very capable offshore boat that is easily managed by a small crew. The boat features the Full Foil Keel, which provides a long list of advantages for the cruising sailor: moderate draft, increased stability, superior rudder and propeller protection and one-piece construction for maximum strength. The cutter rig that is used on this boat has long been regarded as the most versatile and manageable for the cruising sailor. Then add in the furling head sails and you have a boat that is very safe and very easy to sail.

If you are in the market for that exceptional boat, you must take a look at this Island Packet. Don't miss this opportunity.

Galley Features

The well-located galley is in the starboard aft corner with easy access to the cockpit as well as the salon. It features numerous convenience features for the cruising sailor such as a generous wrap around counter tops with sea rails, numerous deep drawers and lockers for provisioning and food storage plus a slip resistant molded sole that provides secure footing and easy maintenance for this busy area. The original ice box upper lid seal was replaced/upgraded with a magnetic gasket to provide the best possible seal. To minimize introducing warm moist air into

the freezer each time the fridge is opened there is a 3/4" starboard panel slide out cover.

- Frigoboat Keel Cooler 12V refrigerator & freezer
- Frigoboat Smart compressor speed control
- Gimballed Force 10 LP three burner stove with oven and cover
- Fireboy/Xintex LP gas detector, alarm and control system
- Two 10lb aluminum propane tanks mounted in deck locker
- Origo microwave
- General Ecology Seagull water filter
- Deep double stainless steel sinks
- Hot & cold pressure water system with an 11-gallon hot water heater with a heat exchanger
- Manual water pump with retractable spray unit
- Roll-away trash bin
- Deluxe teak dish rack and cutlery drawers

Electrical Systems

Island Packet's very good electrical system has been improved with the installation of additional batteries, a battery management system, a second battery charger/inverter and a 200 amp diesel generator.

- Dual 30amp electrical service with cord
- Jack Rabbit Energy Systems 200 amp DC diesel generator with a Balmar Max charger/regulator and a battery temperature sensor (2006)
- Six 600ah Lifeline group 27 AGM house batteries
- One 100ah Lifeline group 27 AGM engine start battery
- Xantrex Pathfinder 2 battery bank combiner
- Xantrex Link 1000 battery management system
- Xantrex Freedom Marine 25 inverter/battery charger (2500 watts/130 amps)
- Charles 5000 series 40 amp backup battery charger
- Balmar 100 amp engine alternator (with Balmar Max charger/regulator & battery temperature sensor)
- Masthead LED anchor light
- 12V outlet at navigation station
- 12V outlet at helm
- 12V panel & 120 panel with meters
- Custom lighting in storage areas and hanging lockers
- UL approved marine pre-tinned color coded wiring

- Complete 12V interior lighting with courtesy lights
- Deck light

Mechanical Systems

Island Packet is recognized as a world leader in the construction of high quality cruising yachts through its rigorous attention to design, engineering and the manufacturing process. Nowhere is this more evident than in the selection and installation of equipment. The spotless engine room boasts lead-lined insulation, jacketed and swaged fuel lines, a secondary electric fuel pump and an over-sized Racor fuel filter/water separator, plus the plumbing system has special odor resistant sanitation hoses.

- VariProp 4 blade feathering prop
- Sidepower 6hp bow thruster
- Mermaid 16,500 BTU reverse-cycle air conditioning system (2011)
- Two manual heads
- Holding tank monitor at the navigation station
- Custom designed fresh water toilet flush system (by flipping a valve the old system can be used)
- Speed Seal quick change water pump cover
- 4 Hella 12V ventilation fans
- Fireboy/Xintex CO2 detector
- Dock side water connection
- 11 gallon hot water heater with heat exchanger (2011)
- Bronze engine, head and air conditioning intake strainers
- Manual and electric bilge pumps
- Bow and cockpit wash downs (New Found Metals - quick disconnect fittings)
- Cockpit shower
- Full engine instrumentation with single lever engine control mounted on the helm
- Fuel and water gauges mounted on the tanks
- Individual shower and ice box drain pumps with strainers
- Hot and cold pressure water system with an accumulator tank
- Manual water pump at the galley sink
- Rack and pinion direct drive steering system with a stainless steel leather wrapped wheel

Hull and Deck Features

The hull of the Island Packet 420 features the Full Foil Keel design which offers a moderate draft, low ballast placement for increased stability, excellent rudder and prop protection and a highly effective airfoil shape for windward performance. The deck offers a recessed foredeck, an integral bow pulpit with two SeaSafe anchor rollers and a two-tone diamond pattern slip resistant surfaces. The cockpit offers contoured seating that can accommodate a large crew in comfort. The transom features a swim deck with a fold-down ladder which make water activities easy. Plus there are two stern rail seats that may be the "best seats in the house".

Exaltation has a great Sunbrella canvas package. It includes a bimini and dodger with a connector panel, sail trim windows, stainless steel grab rails and full enclosures with screens. The dodger has EZ2CY isinglass with a protective cover. There are port, starboard and aft Sunbrella cockpit sun shades as well as a pedestal cover.

- Lofrans Progress II low profile windlass
- Lofrans Progress II capstan windlass
- 44 lb Bruce anchor with 150' 5/16" Hi-test chain & 250' of 5/8" New England Seaguard nylon twisted rode
- 55 lb Delta anchor with 60' 3/8" Hi-test chain & 300' of 5/8" New England Seaguard nylon twisted rode
- Kato stainless steel heavy duty davits with a flag pole mount
- Cruising Concepts bi-fold teak cockpit table
- Cruising Concepts teak drink holder mounted on binnacle
- Three stainless steel dorade vents with screens and guards
- Eight Lewmar Ocean Series deck hatches
- Glebe Creek custom screens for the deck hatches
- Glebe Creek custom companionway screen doors with solid inserts
- Fifteen opening polished stainless steel ports with screens
- Peek-a-Boo opening port privacy covers (8)
- Double lifelines with port and starboard boarding gates plus a stern rail gate
- Port and starboard stainless steel mast rails
- Island Packet step plates
- Rub rail with stainless steel striker
- Closed cell foam cockpit cushions - 4 sections plus helmseat with backrest cushion
- Coaming lines storage bins with hinged covers

Sails and Rigging

The cutter rig is the choice of experienced offshore cruisers because of its versatility, ease of use and excellent performance over a wide range of wind and sea conditions. Exaltation improves upon this highly desired sailplan with a free-standing Hoyt staysail boom, simplifying control and adding significant performance to this highly effective sail.

The Air Force sail inventory includes a full battened mainsail with a three line Dutchman flaking system and a tan Sunbrella sail cover, roller furling staysail and an upgraded 135% roller furling genoa (standard sail was 110%).

- Seco South double spreader keel stepped mast
- Harken roller furling on both headsails
- 2 Lewmar Ocean Series 54CST 2 speed primary winches
- 2 Lewmar Ocean Series 16CST secondary winches
- Lewmar 44CST powered main halyard winch on cabin top
- Lewmar 44CST mainsail reefing winch on cabin top
- Lewmar 16CST staysail sheet winch on cabin top
- Lewmar 24C 2 speed jib halyard winch mounted on mast
- Lewmar 8C staysail halyard winch mounted on mast
- All control lines led aft to cockpit

Navigation Electronics and Entertainment Systems

The electronics mounting panel at the navigation station has been improved with a piano hinge, making it much easier for service or adjustments. There is also a plexiglas panel with a piano hinge covering the electrical breakers. The navigation seat can be electrically adjusted.

- Raytheon RL70C color radar display
- Raytheon 4KW Pathfinder Radome with Kato mount
- Raytheon Raychart RC520/whigh speed buss chart plotter at the navigation station
- Raytheon ST60 multifunction display at the navigation station (speed, depth, temp. and log)
- Raymarine Raystar 125/with WAAS GPS (2011)
- Raymarine ST60 knotmeter
- Raymarine ST60 depthsounder
- Raymarine ST60 wind instrument &wind vane transducer
- Raymarine ST7000 autopilot with a type 300 core pack and a Whitlock 1/4hp drive unit

- Standard Horizon Spectrum VHF radio with a mast mounted hailer horn
- Standard Horizon remote microphone for cockpit
- GAM Electronics base loaded SS-2 3'VHF antenna
- Dantronics Hi-gain TV antenna
- Phone and cable TV inlet
- LCD 19" digital HDTV (2009)
- Sony DVD component deck
- Kenwood AM/FM/CD stereo
- Kenwood 10 disk CD changer
- Two Bose salon speakers
- Two Pioneer Nautica Max-2 cockpit speakers

Safety Equipment

- Radar reflector
- LifeSling
- Life jackets (4)
- Cal-June rail mounted horse shoe buoy
- Four pad-eyes in cockpit for harness tether
- Port and starboard jacklines with securing pad-eyes on deck
- Masthead Forspar lightning protection
- Kidde fire extinguishers (3)

Additional Gear

- Bosun's chair
- Fenders and docklines
- Anchor snubber
- Edson outboard motor bracket
- Forespar outboard motor hoist
- Spare Rule 3700 gph bilge pump
- Winch handles
- Complete and organized documentation on the boat and all systems
- Custom cabin sole carpeting for storage season protection
- Ritchie compass
- Weems & Plath ships clock and barometer
- Weems & Plath gimbaled brass oil lamps (2)
- Spare engine fuel injector

- Toilet rebuild kit
- Spare filters, impellers and belts
- Spare fuses, shackles plus other various items
- Complete tool kit

Also available Dinghy, motor and Trailer – negotiable

Исключения

При продаже яхты исключаются личные вещи владельца.

Отказ от ответственности

Компания предоставляет описание судна или яхты добросовестно, но не может гарантировать точность этой информации, а также не ручается за техническое состояние. Покупатель должен проинструктировать своих агентов или оценщиков исследовать представленную информацию более подробно, по собственному желанию. Продажа судна или яхты, изменение цены или снятие с продажи будет происходить без предварительного уведомления.

ФОТОГРАФИИ

photo 02



photo 03



photo 04



photo 05



photo 06



photo 07



photo 08



photo 09



photo 10



photo 11



photo 12



photo 13



photo 14



photo 15



photo 16



photo 17



photo 18



photo 19

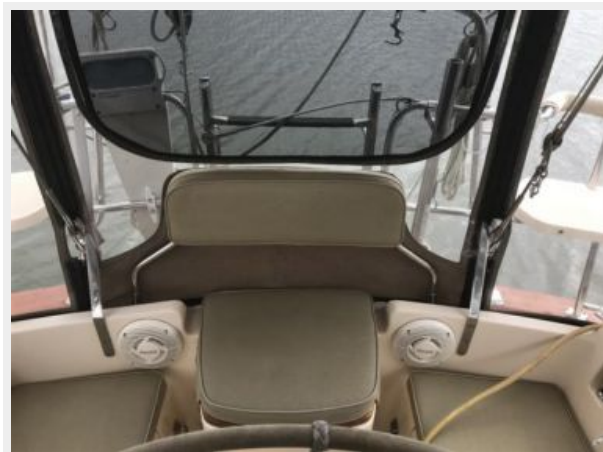


photo 20



photo 21



photo 22



photo 23



photo 24



photo 25



photo 26



photo 27



photo 28



photo 29



photo 30



photo 31



photo 32



photo 33



photo 34



photo 35



photo 36



photo 39



photo 40



photo 41



photo 42



photo 43



photo 44



photo 45



photo 46



photo 47



photo 48



photo 49



photo 50



photo 51



photo 52



photo 53



photo 54



photo 55



photo 56



photo 57



photo 58



photo 59



photo 60



photo 61



photo 62



photo 63

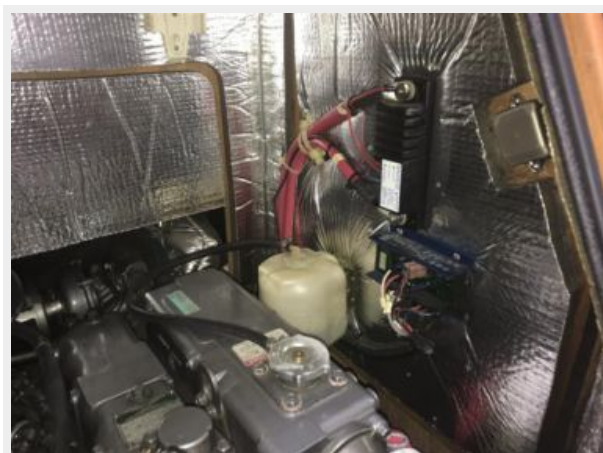


photo 64



photo 65



КОНТАКТЫ

Андрей Шестаков (Andrey Shestakov) – ведущий яхтенный брокер отдела продаж яхт и судов компании Shestakov Yacht Sales Inc. Официальный представитель Shestakov Yacht Sales Inc. для русскоговорящих клиентов в центральном офисе компании в Майами/Форт Лодердейл/Флорида/США.

Контактная информация

Email: andrey@shestakovyachtsales.com

Web: shestakovyachtsales.com

Телефоны

Краснодарский край: **+7(918)465-66-44**

США, Майами, Флорида: **+1(954)274-4435**

Время работы

Понедельник – Суббота: **9:00 - 21:00**
EDT

Воскресенье: **Закрито**

Адрес



Harbour Towne Marina, 850 NE 3rd St,
STE 213, Dania, FL 33004