

COLD SHOT — CAL



Builder: CAL

Year Built: 1981

Model: Cruising Sailboat

Price: PRICE ON APPLICATION

Location: United States

LOA: 39' 0" (11.89m)

Beam: 12' 0" (3.66m)

Max Draft: 6' 8" (2.03m)

Our experienced yacht broker, Andrey Shestakov, will help you choose and buy a yacht that best suits your needs **Cold Shot — CAL** from our catalogue. Presently, at Shestakov Yacht Sales Inc., we have a wide variety of yachts available on our sale's list. We also work in close contact with all the big yacht manufacturers from all over the world.

If you would like to buy a yacht **Cold Shot — CAL** or would like help answering any questions concerning purchasing, selling or chartering a yacht, please call **+1(954)274-4435**

TABLE OF CONTENTS

TABLE OF CONTENTS	2
SPECIFICATIONS	3
Overview	3
Basic Information	3
Dimensions	3
Speed, Capacities and Weight	3
Accommodations	3
Hull and Deck Information	4
Engine Information	4
DETAILED INFORMATION	5
Overview	5
Exclusions	6
Disclaimer	6
PHOTOS	7
CONTACTS	11
Contact details	11
Telephones	11
Office hours	11
Address	11

SPECIFICATIONS

Overview

New Electronics, a two-year-old Main Sail and Doyle Stackpack, and a folding helm are just a few highlights of this well-cared-for Cal 39. With two large cabins and a new head, "Cold Shot" is ready for new adventures with your family and friends. Call today for more information or to schedule a viewing!

Basic Information

Category: Cruising Sailboat

Model Year: 1981

Year Built: 1981

Country: United States

Dimensions

LOA: 39' 0" (11.89m)

Beam: 12' 0" (3.66m)

Max Draft: 6' 8" (2.03m)

Clearance: 55' 0" (16.76m)

MFG Length: 39' 0" (11.89m)

Speed, Capacities and Weight

Displacement: 17000 Pounds

Water Capacity: 120 Gallons

Holding Tank: 15 Gallons

Fuel Capacity: 20 Gallons

Accommodations

Total Cabins: 2

Total Berths: 4

Total Heads: 1

Hull and Deck Information

Hull Material: Fiberglass

Engine Information

Engines: 1

Manufacturer: Universal

Model: 5444

Engine Type: Inboard

Fuel Type: Diesel

DETAILED INFORMATION

Overview

Electronics

- Depthsounder - Raymarine
- Wind speed and direction
- Navigation center
- Autopilot - Raytheon: ST4000+
- Compass
- GPS
- VHF - Raymarine
- CD player - Jensen- MCD5112

Sails

- Fully battened mainsail
- Furling genoa

Rigging

-
- Steering wheel - Folding and Spare

Inside Equipment

- Electric bilge pump
- Manual bilge pump
- Oven - Gas Systems: Natural Gas
- Marine head - New 2018

Electrical Equipment

- Shore power inlet

Outside Equipment/Extras

- Cockpit cushions
- Swimming ladder
- Outboard engine brackets

Covers

- Spray hood

- Lazy bag - Doyle StackPack

Exclusions

Owner's personal belongings.

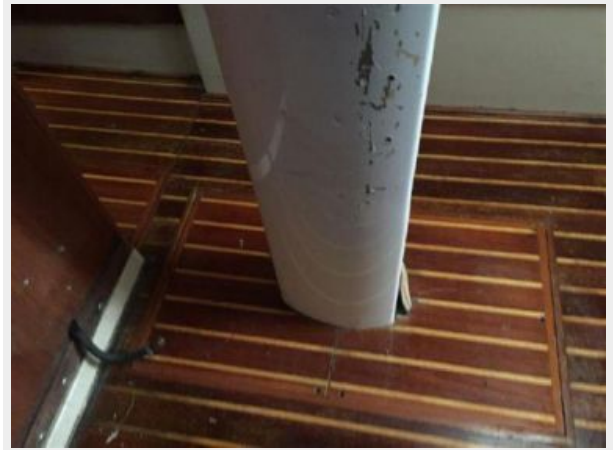
Disclaimer

The Company offers the details of this vessel or yacht in good faith but cannot guarantee or warrant the accuracy of this information nor warrant the condition of the vessel. A buyer should instruct his representatives, agents, or his surveyors, to investigate such details as the buyer desires validated. This vessel or yacht is offered subject to prior sale, price change, or withdrawal without notice.

PHOTOS









CONTACTS

Andrey Shestakov, leading yacht broker of the sales department of Shestakov Yacht Sales Inc. Shestakov Yacht Sales Inc., the official representative of the Miami/Fort Lauderdale FL headquarters.

Contact details

Email: andrey@shestakovyachtsales.com

Web: shestakovyachtsales.com/en/

Telephones

USA: +1(954)274-4435

Office hours

Monday – Saturday: **9:00 - 21:00** EDT

Sunday: **closed**

Address



Harbour Towne Marina, 850 NE 3rd St,
STE 213, Dania, FL 33004