

FAMILY HUG — PEARSON



Builder: PEARSON

Year Built: 1990

Model: Sport Yacht

Price: PRICE ON APPLICATION

Location: United States

LOA: 38' 0" (11.58m)

Beam: 13' 3" (4.04m)

Min Draft: 3' 3" (0.99m)

Our experienced yacht broker, Andrey Shestakov, will help you choose and buy a yacht that best suits your needs **Family Hug — PEARSON** from our catalogue. Presently, at Shestakov Yacht Sales Inc., we have a wide variety of yachts available on our sale's list. We also work in close contact with all the big yacht manufacturers from all over the world.

If you would like to buy a yacht **Family Hug — PEARSON** or would like help answering any questions concerning purchasing, selling or chartering a yacht, please call **+1(954)274-4435**

TABLE OF CONTENTS

TABLE OF CONTENTS	2
SPECIFICATIONS	3
Overview	3
Basic Information	3
Dimensions	3
Speed, Capacities and Weight	3
Accommodations	3
Hull and Deck Information	3
Engine Information	4
DETAILED INFORMATION	5
Overview	5
Exclusions	5
Disclaimer	6
PHOTOS	7
CONTACTS	14
Contact details	14
Telephones	14
Office hours	14
Address	14

SPECIFICATIONS

Overview

The Pearson 34 is a big powerful 34 footer that combines the legendary performance and classic lines of a C. Raymond Hunt hull design with the latest in contemporary accommodations and interior decor from the Pearson design team .Family Hug has been maintained to the highest degree by a professional mechanic .Be the first to see Family Hug , you will not be disappointed .

Basic Information

Category: Sport Yacht

Sub Category: Convertible

Model Year: 1990

Year Built: 1990

Country: United States

Dimensions

LOA: 38' 0" (11.58m)

Beam: 13' 3" (4.04m)

Min Draft: 3' 3" (0.99m)

MFG Length: 34' 0" (10.36m)

Speed, Capacities and Weight

Water Capacity: 70 Gallons

Fuel Capacity: 300 Gallons

Accommodations

Total Heads: 1

Hull and Deck Information

Hull Material: Fiberglass

Engine Information

Engines: 2

Manufacturer: Caterpillar

Model: 3208

Engine Type: Inboard

Fuel Type: Diesel

DETAILED INFORMATION

Overview

Galley

- S.S Sink
- 3 Burner Princess Stove
- Princess Microwave
- Kenmore Toaster Oven
- Dometic Fridge and Freezer

Electrics

- Northern Lights Diesel Generator
- Proteck 1240i Plus 40 amp Battery Charger
- Central A/C

Electronics

- Standard Horizon Intrepid VHF
- Icom M504 VHF
- Ratheon R41 Radar
- ARC Spot Light
- Garmin Autopilot
- Garmin GPS Chartplotter

Head

- Electric Head
- Hot and Cold Shower
- Holding Tank with Monitor
- Vanity with Mirror and Storage

Deck

- Cockpit Hot and Cold Shower
- Maxwell Windlass
- Danforth Anchor
- 20 ft Chain 150 ft Nylon Rode
- Outriggers

Exclusions

Owner's personal belongings.

Disclaimer

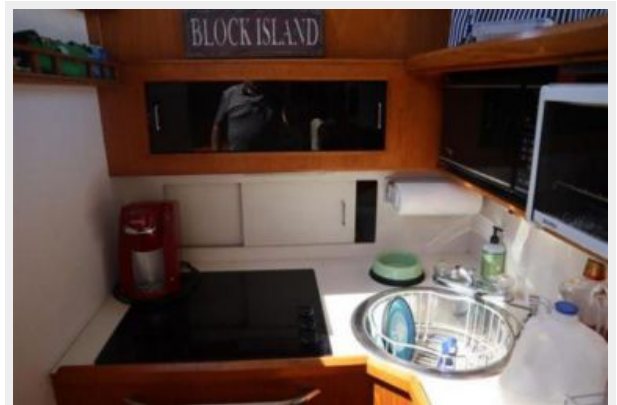
The Company offers the details of this vessel or yacht in good faith but cannot guarantee or warrant the accuracy of this information nor warrant the condition of the vessel. A buyer should instruct his representatives, agents, or his surveyors, to investigate such details as the buyer desires validated. This vessel or yacht is offered subject to prior sale, price change, or withdrawal without notice.

PHOTOS

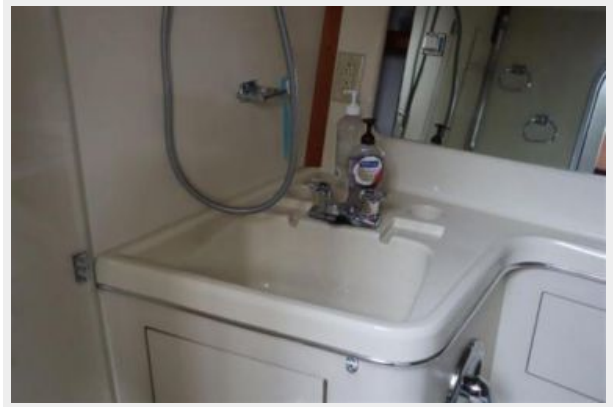
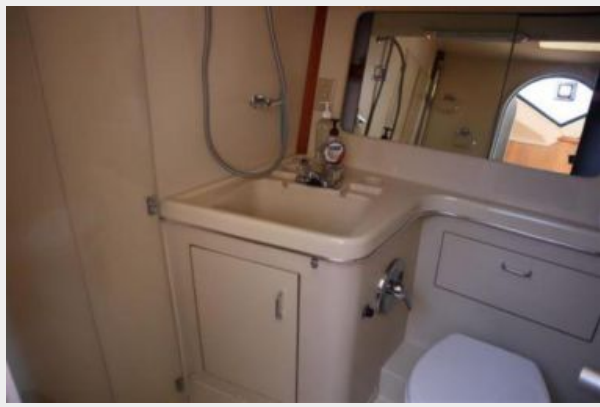


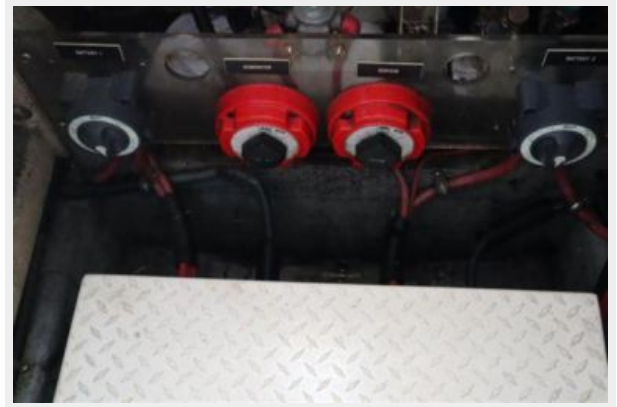












CONTACTS

Andrey Shestakov, leading yacht broker of the sales department of Shestakov Yacht Sales Inc. Shestakov Yacht Sales Inc., the official representative of the Miami/Fort Lauderdale FL headquarters.

Contact details

Email: andrey@shestakovyachtsales.com

Web: shestakovyachtsales.com/en/

Telephones

USA: +1(954)274-4435

Office hours

Monday – Saturday: **9:00 - 21:00** EDT

Sunday: **closed**

Address



Harbour Towne Marina, 850 NE 3rd St,
STE 213, Dania, FL 33004