

1991 NAUTICAT 32 — NAUTICAT



Builder: NAUTICAT

Year Built: 1991

Model: Cruising Sailboat

Price: PRICE ON APPLICATION

Location: United States

LOA: 32' 0" (9.75m)

Beam: 10' 0" (3.05m)

Max Draft: 5' 0" (1.52m)

Our experienced yacht broker, Andrey Shestakov, will help you choose and buy a yacht that best suits your needs 1991 Nauticat 32 — NAUTICAT from our catalogue. Presently, at Shestakov Yacht Sales Inc., we have a wide variety of yachts available on our sale's list. We also work in close contact with all the big yacht manufacturers from all over the world.

If you would like to buy a yacht 1991 Nauticat 32 — NAUTICAT or would like help answering any questions concerning purchasing, selling or chartering a yacht, please call +1(954)274-4435

TABLE OF CONTENTS

TABLE OF CONTENTS	2
SPECIFICATIONS	3
Overview	3
Basic Information	3
Dimensions	3
Speed, Capacities and Weight	3
Accommodations	3
Hull and Deck Information	4
Engine Information	4
DETAILED INFORMATION	5
Overview	5
Exclusions	6
Disclaimer	7
PHOTOS	8
CONTACTS	16
Contact details	16
Telephones	16
Office hours	16
Address	16

SPECIFICATIONS

Overview

For sale: A 1991 NAUTICAT 32. A distinguished pilothouse cruiser. Ideal long term cruiser/liveaboard with an huge amount of stowage. This yacht is well equipped and ready to go: Raymarine RL70C Radar/Chart Plotter, Raymarine GPS and autopilot. . All lines led to the cockpit, combined with in-mast furling, makes for a vessel that is easily singlehanded. This is a solidly built, go-anywhere cruiser.

Basic Information

Category: Cruising Sailboat

Model Year: 1991

Year Built: 1991

Country: United States

Dimensions

LOA: 32' 0" (9.75m)

Beam: 10' 0" (3.05m)

Max Draft: 5' 0" (1.52m)

Clearance: 45' 0" (13.72m)

MFG Length: 32' 0" (9.75m)

Speed, Capacities and Weight

Water Capacity: 106 Gallons

Fuel Capacity: 66 Gallons

Accommodations

Total Heads: 1

Hull and Deck Information

Hull Material: Fiberglass

Engine Information

Engines: 1

Manufacturer: Yanmar

Model: 3GM30F

Engine Type: Inboard

Fuel Type: Diesel

DETAILED INFORMATION

Overview

Accommodations The interior is a hallmark of Finnish boat building; skillfully joined and richly finished in a satin varnish. Curtains in well-chosen fabric are hung and can provide privacy when drawn. The owners' cabin aft has a very large double berth with opening portlight for ventilation and two (2) additional portlights for natural light. There are six (6) opening hatches including the companionway hatch for light and ventilation. The aft cabin has two (2) portlights and one (1) opening portlight. The pilothouse settee and teak table will convert to a large single or small double berth head opposite the galley has a tile floor with a shower drain, a new electric-flush marine toilet, sink with Hot & Cold water and a telephone-type shower handle. There is a mirror and opening hatch overhead. The compartment surfaces are gelcoated and easily cleaned and maintained. A good-sized, heatable wet locker abuts the head and is accessible through the aft head bulkhead. Teak & Holly soles throughout Forward cabin is a standard V-berth arrangement with a hanging locker and large overhead hatch. Galley

- Double stainless steel sink with hot and cold pressure water
- There are ample lockers beneath the off-white formica counter and outboard of the countertop for dishes plates, glasses, pots, pans and scullery.
- A locker at the foot of the steps from the pilothouse has four (4) deep, slide out baskets for dry-stores and additional storage.
- There is a top-loading, compressor-driven (12V), refrigerated, icebox at the aft end of the galley.
- Mid-counter is a two (2) burner stainless steel LPG stove with oven; gimbaled
- Seagull water filter

Sails and Rigging

- Selden in-mast furling, anodized, aluminum mainmast
- Profurl Furler on the head stay
- North Dacron Mainsail
- North Dacron 130-135 % Genoa
- North Cruising Spinnaker with dousing sock
- North Storm Jib 60 SQ FT ATN
- Selden rodkick boomvang
- Spinnaker pole and gear
- Two (2) Lewmar 40 ST Primary winches
- One (1) Andersen Halyard winch

Engines

- Yanmar GM 30F, 27 HP diesel

- 2.64:1 reduction gear
- 16 X 12.5 three (3) bladed bronze propeller, spare
- Three (3)-blade MAX prop, feathering prop
- 30 mm Stainless steel propeller shaft

- Two (2) Independent helm stations at the pilothouse and cockpit binnacle are Teleflex-hydraulic steering Capialano . The cockpit station has a, "sail valve" so you can feel the helm or rudder feedback.
- Emergency tiller
- Electric and manual bilge pumps
- Espar diesel-fired heater, ducted to all cabins
- Windshield wipers
- Warp cutter on shaft

Electrical

- Two (2) starting batteries
- Two (2) pairs six (6) Volt, deep cycle, house, batteries totaling 300 amps
- 140 Watt Solar panel with Blue Sky controller
- Xantrex 12 V Battery Charger
- 110 volt Shore Power Outlet with a 30 amp Shore Power Cord
- Victron Battery Monitor new 2014
- Six (6) US gallon water heater
- 12V Fans
- Solar fan
- 110 outlets

Electronics and Navigational Equipment

- Raymarine RL 70C Radar/Chart Plotter
- Raymarine RN 300 GPS
- Raymarine ST60 depth, speed, and wind instruments
- VHF Marine radio
- Raymarine autopilot with hydraulic pump
- Raymarine autopilot remote
- FM/CD stereo and speakers

Tankage

- Fuel: 66-Gallons
- Fresh water: 106-Gallons

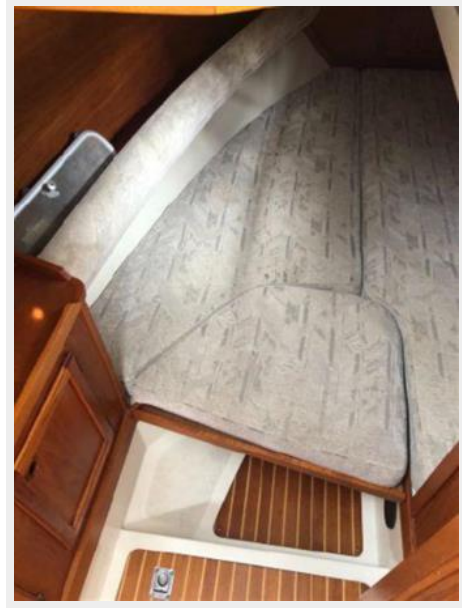
Exclusions

Owner's personal belongings.

Disclaimer

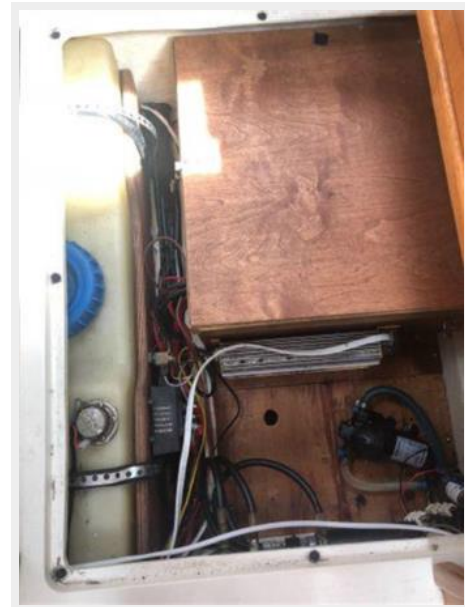
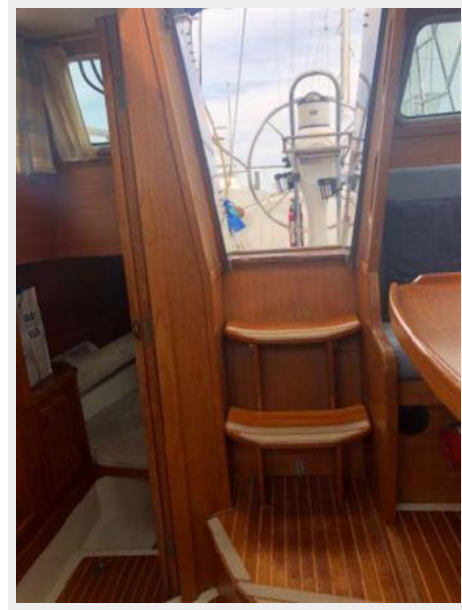
The Company offers the details of this vessel or yacht in good faith but cannot guarantee or warrant the accuracy of this information nor warrant the condition of the vessel. A buyer should instruct his representatives, agents, or his surveyors, to investigate such details as the buyer desires validated. This vessel or yacht is offered subject to prior sale, price change, or withdrawal without notice.

PHOTOS

















CONTACTS

Andrey Shestakov, leading yacht broker of the sales department of Shestakov Yacht Sales Inc. Shestakov Yacht Sales Inc., the official representative of the Miami/Fort Lauderdale FL headquarters.

Contact details

Email: andrey@shestakovyachtsales.com

Web: shestakovyachtsales.com/en/

Telephones

USA: +1(954)274-4435

Office hours

Monday – Saturday: **9:00 - 21:00** EDT

Sunday: **closed**

Address



Harbour Towne Marina, 850 NE 3rd St,
STE 213, Dania, FL 33004