

WILDEST DREAMS — REGAL



Builder: REGAL

Year Built: 2007

Model: Cruising Yacht

Price: PRICE ON APPLICATION

Location: United States

LOA: 44' 0" (13.41m)

Beam: 14' 0" (4.27m)

Max Draft: 3' 0" (0.91m)

Cruise Speed: 30 Kts. (35 MPH)

Max Speed: 35 Kts. (40 MPH)

Our experienced yacht broker, Andrey Shestakov, will help you choose and buy a yacht that best suits your needs **Wildest Dreams — REGAL** from our catalogue. Presently, at Shestakov Yacht Sales Inc., we have a wide variety of yachts available on our sale's list. We also work in close contact with all the big yacht manufacturers from all over the world.

If you would like to buy a yacht **Wildest Dreams — REGAL** or would like help answering any questions concerning purchasing, selling or chartering a yacht, please call **+1(954)274-4435**

TABLE OF CONTENTS

TABLE OF CONTENTS	2
SPECIFICATIONS	5
Overview	5
Basic Information	5
Dimensions	5
Speed, Capacities and Weight	6
Accommodations	6
Hull and Deck Information	6
Engine Information	6
DETAILED INFORMATION	7
Accommodations	7
Galley	7
Decks and Exterior	8
Electronics and Navigation	8
Engines and Mechanical	9
Disclaimer	9
Exclusions	10
Disclaimer	10
PHOTOS	11
2	11
3	11
4	11
5	11
6	11
7	11
8	12
9	12
10	12

11	12
12	12
13	12
14	13
15	13
16	13
17	13
18	13
19	13
20	14
21	14
22	14
23	14
24	14
25	14
26	15
27	15
28	15
29	15
30	15
31	15
32	16
33	16
34	16
CONTACTS	17
Contact details	17
Telephones	17
Office hours	17
Address	17

SPECIFICATIONS

Overview

This Beautiful **Regal 4460 Commodore** has a long list of upgrades and features that set her apart from the crowd!

Powered by **Volvo's D6 IPS 500** with Joystick Control, she is equipped with Two (2) Factory Remanufactured Pods installed in September 2017. She also features a NEW generator installed in July 2019!

Other features include a new Sat TV system with new TV's and Blu-Ray, and a new 11000 BTU Aft AC unit!

This is a beautiful **White-Hull** boat with no fading issues normally associated with darker-colored hulls too!

If you are in the market for a Premium Regal Commodore this one is a MUST-SEE! Please check our FULL SPECS for more details and to schedule an appointment to see her for yourself!

Basic Information

Category: Cruising Yacht

Sub Category: Express

Model Year: 2007

Year Built: 2007

Country: United States

Dimensions

LOA: 44' 0" (13.41m)

LOD: 40' 10" (12.45m)

Beam: 14' 0" (4.27m)

Max Draft: 3' 0" (0.91m)

Speed, Capacities and Weight

Cruise Speed: 30 Kts. (35 MPH)

Max Speed: 35 Kts. (40 MPH)

Displacement: 20375 Pounds

Water Capacity: 101 Gallons

Holding Tank: 48 Gallons

Fuel Capacity: 328 Gallons

Accommodations

Total Cabins: 2

Total Heads: 2

Hull and Deck Information

Hull Material: Fiberglass

Deck Material: Fiberglass

Engine Information

Engines: 2

Manufacturer: Volvo

Model: D6 IPS 500

Engine Type: Inboard

Fuel Type: Diesel

DETAILED INFORMATION

Accommodations

The Regal 4460 is a Luxury Sport Yacht with a wide beam and a very innovative Cockpit layout. The Cabin design features two Staterooms and two Heads, both Staterooms with a pocket door for privacy. The interior features beautiful Cherry Cabinetry throughout.

NEW M1 KVH Satellite TV System - 2019

SALON

- Beautiful Cherry Cabinetry Throughout
- Amtico Flooring
- Samsung SmartTV with Blu-Ray Disc Player, KVH M1 Satellite Receiver
- New Salon Sound System 2019
- Crescent Dinette with Upholstered Foot Stools and a New Salon Tabletop
- LED Lighting Throughout - NEW 2019

Master Stateroom

- Island Queen Berth
- Pocket Privacy Door
- Private Head Access
- Backlit Headboard
- Large Hanging Locker
- Vacu-Flush Head System - Rebuilt 2019
- Stall Shower with Acrylic Door
- Sink and Vanity
- Medicine Cabinet
- NEW Digital TV - 2019

Guest Stateroom

- Twin Berths, Side-by-Side with Filler / Converts to Queen Berth
- Pocket Privacy Door
- Private Head Access
- Large Hanging Locker
- Vacu-Flush Head System - Rebuilt 2019
- Sink and Vanity
- NEW Digital TV - 2019

Galley

- Nova-Kool Side-by-side Refrigerator and Freezer - 120VAC and 12VDC
- Dual Burner Solid-Surface Stovetop - Recessed with Cover
- Solid Surface Countertops
- Cuisinart Convection Microwave Oven
- Stainless Steel Sink Basin
- Holding and Freshwater Tank Monitor System
- Cockpit Refrigerator - 120VAC Only
- Kenyon Electric Grill - Cockpit
- Splendide Combination Washer/Dryer - Aft Stateroom

Decks and Exterior

- Fresh Buff and Wax on a Beautiful White Hull
- Fiberglass Hardtop
- Excellent Canvas Curtains - Black
- Aft Drop Curtain Separates a Dual Level Cockpit
- Flexi-Teak Cockpit and Swim Platform Sole
- Crescent Cockpit Seating to Port with Removable Table
- Double-Wide Helm Seat
- Air Conditioning Blower at Helm
- Aft Cockpit Seating - Aft Facing
- Aft Cockpit Transom Seating
- Electric Cockpit Grill
- Large Extended Swim Platform
- Kenwood Cockpit Stereo
- Port and Starboard Transom Gates
- Cockpit Wetbar with Refrigerator
- Full Compliment of Snap-on Covers
- Walk-Through Windshield Access to Foredeck
- Electric Windshield Vent - New Actuator 2019
- Foredeck Cushions
- Fender Storage Lockers on Foredeck
- Electric Anchor Windlass with Helm and Bow Controls
-

Electronics and Navigation

- Two RayMarine E120 Displays
- RayMarine Chartplotter and GPS
- Rear View Color Camera
- RayMarine ST 6002 Smart AutoPilot
- RayMarine 4kW Radar Antenna

- RayMarine ST60 Digital Depth Display
- Standard Horizon GX-2200 VHF Radio with AIS
- Danforth Compass
- Volvo Electronic Engine Monitor
- Volvo Analog Gauges
- Volvo Electronic Engine Controls
- Volvo Joystic IPS Control
- Bennett Trim Tabs
- Guest Marine Remote Spotlight
- Cradlepoint Cellular Modem
- Stray Current Monitor System

Engines and Mechanical

'Wildest Dreams' is powered by a pair of Volvo D6 Diesels rated at 370 HP each coupled with the Volvo IPS Pod Drives. Both drive units were replaced by Western Branch Diesel in September 2017 with factory re-manufactured units.

The generator is a Kohler 8.5 kW unit that was replaced in August of 2019.

Both main engines and generator received recent oil sample analysis, all tests appear normal.

- Twin Volvo D6 370s with IPS 500 Pod Drives - 710 Hours
- Volvo Electronic Engine Controls
- Volvo Joystick IPS Controls
- Factory Re-manufactured Drives - NEW 2017
- Kohler 8.5 kW Generator in Sound Shield - 15 Hours NEW 2019
- Oil X-CHange-R System
- Fireboy Fire Suppression System
- Charles 60 Amp Battery Charger
- Two 30 Amp Shore Cords
- Dual Glendenning Cable Reel Systems
- Dual-Zone Reverse Cycle Heat and AC - 11,000 BTU Aft Unit Replaced in 2019

Disclaimer

The Company offers the details of this vessel in good faith but cannot guarantee or warrant the accuracy of this information nor warrant the condition of the vessel. A buyer should instruct his agents, or his surveyors, to investigate such details as the buyer desires validated. This vessel is offered subject to prior sale, price change, or withdrawal without notice.

Exclusions

Owner's personal belongings.

Disclaimer

The Company offers the details of this vessel or yacht in good faith but cannot guarantee or warrant the accuracy of this information nor warrant the condition of the vessel. A buyer should instruct his representatives, agents, or his surveyors, to investigate such details as the buyer desires validated. This vessel or yacht is offered subject to prior sale, price change, or withdrawal without notice.

PHOTOS

2



3



4



5



6



7



8



9



10



11



12



13



14



15



16



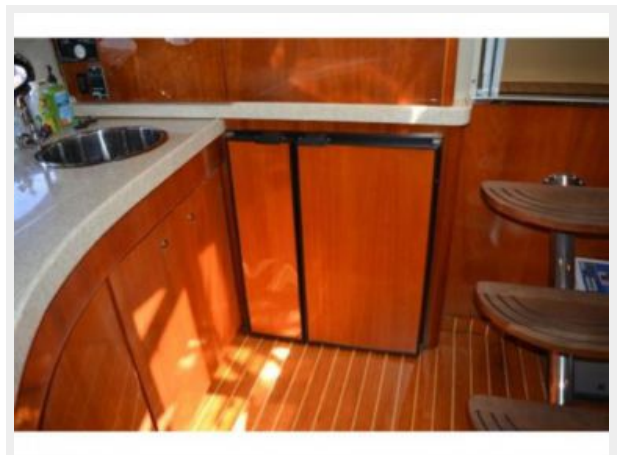
17



18



19



20



21



22



23



24



25



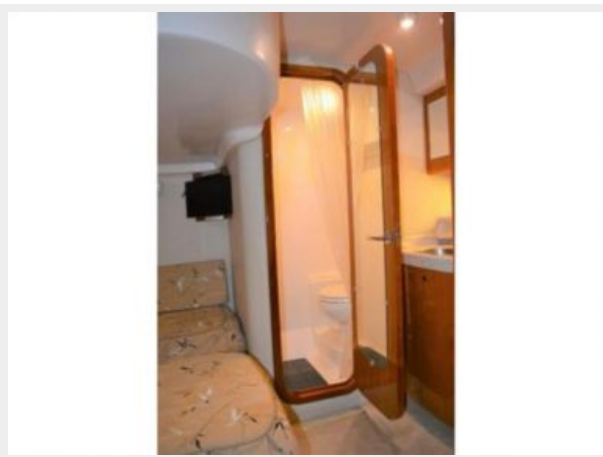
26



27



28



29



30



31



32



33



34



CONTACTS

Andrey Shestakov, leading yacht broker of the sales department of Shestakov Yacht Sales Inc. Shestakov Yacht Sales Inc., the official representative of the Miami/Fort Lauderdale FL headquarters.

Contact details

Email: andrey@shestakovyachtsales.com

Web: shestakovyachtsales.com/en/

Telephones

USA: +1(954)274-4435

Office hours

Monday – Saturday: **9:00 - 21:00** EDT

Sunday: **closed**

Address



Harbour Towne Marina, 850 NE 3rd St,
STE 213, Dania, FL 33004