

CIAO BELLA — FAIRLINE



Builder: FAIRLINE

Year Built: 1998

Model: Motor Yacht

Price: PRICE ON APPLICATION

Location: United States

LOA: 59' 0" (17.98m)

Beam: 15' 6" (4.72m)

Max Draft: 3' 10" (1.17m)

Our experienced yacht broker, Andrey Shestakov, will help you choose and buy a yacht that best suits your needs **Ciao Bella — FAIRLINE** from our catalogue. Presently, at Shestakov Yacht Sales Inc., we have a wide variety of yachts available on our sale's list. We also work in close contact with all the big yacht manufacturers from all over the world.

If you would like to buy a yacht **Ciao Bella — FAIRLINE** or would like help answering any questions concerning purchasing, selling or chartering a yacht, please call **+1(954)274-4435**

TABLE OF CONTENTS

TABLE OF CONTENTS	2
SPECIFICATIONS	6
Overview	6
Basic Information	6
Dimensions	6
Speed, Capacities and Weight	6
Accommodations	6
Hull and Deck Information	7
Engine Information	7
DETAILED INFORMATION	8
Accommodations	8
Electronics	10
Electrical	10
Exterior	10
Engine and Mechanical Details	12
Exclusions	12
Disclaimer	12
PHOTOS	13
7593718_20200918112120454_1_XLARGE	13
7593718_20200918112125101_1_XLARGE	13
7593718_20200918112148635_1_XLARGE	13
7593718_20200918112144271_1_XLARGE	13
7593718_20200918112110611_1_XLARGE	13
7593718_20200918112116122_1_XLARGE	13
7593718_20200918112239014_1_XLARGE	14
7593718_20200918112224238_1_XLARGE	14
7593718_20200918112217194_1_XLARGE	14
7593718_20200918112220341_1_XLARGE	14

7593718_20200918112152363_1_XLARGE	14
7593718_20200918112156160_1_XLARGE	14
7593718_20200918112159108_1_XLARGE	15
7593718_20200918112232241_1_XLARGE	15
7593718_20200918112236004_1_XLARGE	15
7593718_20200918112242049_1_XLARGE	15
7593718_20200918112249148_1_XLARGE	15
7593718_20200918112252145_1_XLARGE	15
7593718_20200918112245404_1_XLARGE	16
7593718_20200918112228010_1_XLARGE	16
7593718_20200918112325399_1_XLARGE	16
7593718_20200918112332450_1_XLARGE	16
7593718_20200918112329402_1_XLARGE	16
7593718_20200918112340584_1_XLARGE	16
7593718_20200918112344400_1_XLARGE	17
7593718_20200918112405362_1_XLARGE	17
7593718_20200918112308222_1_XLARGE	17
7593718_20200918112311394_1_XLARGE	17
7593718_20200918112315018_1_XLARGE	17
7593718_20200918112318078_1_XLARGE	17
7593718_20200918112256509_1_XLARGE	18
7593718_20200918112300343_1_XLARGE	18
7593718_20200918112304388_1_XLARGE	18
7593718_20200918112321301_1_XLARGE	18
7593718_20200918112336339_1_XLARGE	18
7593718_20200918112357381_1_XLARGE	18
7593718_20200918112348213_1_XLARGE	19
7593718_20200918112354194_1_XLARGE	19
7593718_20200918112412364_1_XLARGE	19

7593718_20200918112351277_1_XLARGE	19
7593718_20200918112425425_1_XLARGE	19
7593718_20200918112451490_1_XLARGE	19
7593718_20200918112455587_1_XLARGE	20
7593718_20200918112459396_1_XLARGE	20
7593718_20200918112513398_1_XLARGE	20
7593718_20200918112502788_1_XLARGE	20
7593718_20200918112520295_1_XLARGE	21
7593718_20200918112509664_1_XLARGE	21
7593718_20200918112506575_1_XLARGE	21
7593718_20200918112429512_1_XLARGE	21
7593718_20200918112437403_1_XLARGE	21
7593718_20200918112440550_1_XLARGE	21
7593718_20200918112448211_1_XLARGE	22
7593718_20200918112444651_1_XLARGE	22
7593718_20200918112527582_1_XLARGE	22
7593718_20200918112523567_1_XLARGE	22
7593718_20200918112531759_1_XLARGE	23
7593718_20200918112420623_1_XLARGE	23
7593718_20200918112535897_1_XLARGE	23
7593718_20200918112542275_1_XLARGE	23
7593718_20200918112545463_1_XLARGE	23
7593718_20200918112549475_1_XLARGE	23
7593718_20200918112555710_1_XLARGE	24
7593718_20200918112603538_1_XLARGE	24
7593718_20200918112552353_1_XLARGE	24
7593718_20200918112559665_1_XLARGE	24
7593718_20200918112607694_1_XLARGE	24
7593718_20200918112621028_1_XLARGE	24

7593718_20200918112611136_1_XLARGE	25
7593718_20200918112627320_1_XLARGE	25
7593718_20200918112624214_1_XLARGE	25
7593718_20200918112614174_1_XLARGE	25
7593718_20200918112617536_1_XLARGE	25
7593718_20200918112631783_1_XLARGE	25
7593718_20200918112635655_1_XLARGE	26
7593718_20200918112639578_1_XLARGE	26
7593718_20200918112647520_1_XLARGE	26
7593718_20200918112210302_1_XLARGE	26
7593718_20200918112206353_1_XLARGE	26
7593718_20200918112202236_1_XLARGE	26
7593718_20200918112134727_1_XLARGE	27
7593718_20200918112214167_1_XLARGE	27
CONTACTS	28
Contact details	28
Telephones	28
Office hours	28
Address	28

SPECIFICATIONS

Overview

Luxury Yacht Fish, Twin 3196 CATs 660hp Each w/ only 1850hrs, Raymarine GPS/Plotter/Radar, Rear Camera, AIS/VHF, Auto Pilot, 4 A/C (3 are New), 20kW Onan Gen, Cable Master, New SeaDek in Cockpit, Two Back Down Stations, Dinghy Crane, A Very Nice Example of a Sky lounge Yacht.

Basic Information

Category: Motor Yacht

Sub Category: Sky Lounge

Model Year: 1998

Year Built: 1998

Country: United States

Fly Bridge: Yes

Cockpit: Yes

Dimensions

LOA: 59' 0" (17.98m)

Beam: 15' 6" (4.72m)

Max Draft: 3' 10" (1.17m)

Speed, Capacities and Weight

Displacement: 49200 Pounds

Water Capacity: 160 Gallons

Holding Tank: 40 Gallons

Fuel Capacity: 420 Gallons

Accommodations

Total Cabins: 3

Hull and Deck Information

Hull Material: Fiberglass

Engine Information

Engines: 2

Manufacturer: Caterpillar

Model: 3196

Engine Type: Inboard

Fuel Type: Diesel

DETAILED INFORMATION

Accommodations

Salon

- Air Conditioning with FCF Digital Control
- Overhead Lighting
- Privacy Shades on Windows
- Large U-Shaped Settee with Table
- Port Settee with End Table with Storage Below
- Flat Screen TV
- Liquor Locker to Port

Dinette

- Port of Galley
- Large U-Shaped Dinette
- Circular Table
- Electrical Panel Forward
- Steps to Enclosed Flybridge
- Opening Side Window
- Digital Air Conditioning Control MarineAir Systems

Galley

- Expanded Galley
- Miele Electric Oven
- Frigidaire Convection Microwave Oven
- Drawer Refrigerator/Freezer
- Zamussi (4) Burner Electric Range with Cover
- 110v Outlets
- Granite Countertops
- Dual Stainless Steel Sinks with Covers
- Stainless Steel Faucet
- Ample Storage Above and Below Counters
- Stainless Steel Safety Railing -Removable
- Opening Side Window

Master Stateroom Forward

- Centerline Island Queen with Storage Below
- Wardrobes, Port and Starboard
- Privacy Shades in Portlights
- Overhead Lighting

- FCF Digital A/C Control
- Overhead Opening Screened Hatch

Master Head

- Ensuite to Starboard
- Privacy Door
- Wood Flooring
- Mirrored Storage Locker
- Vacu-Flush Head
- Opening Port Light with Shade
- Overhead Lighting
- Mirror on Blukhead
- Sink with Stainless Steel Faucet
- Large Enclosed Shower with Hot and Cold Water

Port Guest Stateroom

- Large Wardrobe Locker
- Overhead Lighting
- (2) Single Berths
- Port Light with Shade
- FCF Digital A/C Control
- Bookshelf
- Storage Access to Under Dinette

Guest Head

- To Port at the Base of Stairway
- Dual Entry from Port Stateroom and Exterior Walkway
- Wood Flooring
- Mirrored Storage Locker
- Vacu-Flush Head
- Opening Port Light with Shade
- Overhead Lighting
- Mirror on Blukhead
- Sink with Stainless Steel Faucet
- Large Enclosed Shower with Hot and Cold Water

Starboard Stateroom

- Large Wardrobe Locker
- Overhead Lighting
- (2) Single Berths
- Port Light with Shade
- Bookshelf

Electronics

- Raymarine Dome Radar
- Raymarine Hybrid Touch Display GPS/Chart/Radar/Depth
- Raymarine Depth
- Azimuth Electronic Compass
- ZF Electronic Shift and Throttle Controls
- Icom IC-M59 Marine VHF Radio
- Bennett Trim Tab Controls with Gauges
- Bow Thruster Joystick Control
- Caterpillar Digital Readouts
- Full Engine Instrumentation
- Robertson AP300x AutoPilot
- Standard Horizon Matrix AIS/GPS VHF Marine Radio
- Onan Generator Control
- Bilge Pump Monitor Station

Electrical

- (4) Battery Switches in Engine Room
- Batteries
- DeltaVolt Sportsman 4 Bank Battery Charger
- NEwmar 80amp Battery Charger/Converter
- Main AC/DC Distribution Panel at Dinette
- Secondary Panel Located at Helm in Flybridge
- Glenn dining Cable Master with 50 amp Shore Power

Exterior

Exterior

Enclosed Flybridge

- Starboard L-Shaped Leather Settee with Table
- Port Barrel Chair
- Port Entertainment Center
- Overhead Lighting
- Air Conditioning with Digital Control
- Helm Chairs with Storage Below
- Overhead Opening Hatch with Screen

Aft of Flybridge

- Entry Doors with Stainless Steel Frame
- Summer Galley with: Refrigerator, Sink and Faucet, and Emeril Electric Grill, Additional Storage lockers, Stainless Steel Safety Grab Rail
- Starboard Stop/Start Engine Control
- Aft Center Back Down Station: Bow Thruster Joystick and ZF Shift and Throttle Control
- Overhead Lighting

Deck

- (10) Stainless Steel Cleats
- (2) Bow Line Chocks
- Navigation Lights
- Stainless Steel Bow Rail
- Stainless Steel Grab Rails
- Stainless Steel Windshield Frame
- Forward Sun Area with Stainless Steel Grab Rails
- Lofrans Electric Windlass with Anchor
- Anchor Line Locker
- Dual Trumpet Horn
- Canvas Windshield Cover
- Textaline Windshield Shade Cover
- (8) Stainless Steel Portlights
- Remote Spotlight

Cockpit

- Aft Bench Seating with Teak Table
- Shower
- Port and Starboard Entry Doors
- Courtesy Lights
- Dinghy Crane Aft
- Recent SeaDek Foam Flooring
- Swim platform with Ladder
- Underwater Lights Mounted to Transom
- Entrance to Storage/Crew Quarters
- Access to Engine room
- Stainless Steel Grab Rail Port and Starboard
- Port Side Engine Control Station with: Stop/Start, Bow Thruster Joystick, ZF Electronic Shift and Throttle Controls
- Washdown
- Port and Starboard Line Lockers
- Overhead Lighting
- Overhead Stereo Speakers

Aft Storage Converted from Crew Quarters

- Main Entry in Aft Seating
- Opening Window to Port and Starboard
- Overhead Lighting
- Converted to Storage by removing Cockpit Storage Bulkhead
- 110v Outlet
- Secondary Entry in Cockpit via Large Hatch

Engine and Mechanical Details

- LED Lights
- Fluorescent Lights
- 110v Outlets
- Reverso Oil Change System
- Halon System
- Bilge Blowers 12v
- Bilge Blowers 24v
- Spare Stainless-Steel Shaft
- Aluminum Fuel Tanks
- Hydraulic Steering System
- Sea Strainers: Main Engines, Generator
- Racor Fuel Filter for Generator
- Separ Main Engine Fuel Filters with Vacuum Gauges, and Water Monitor

Exclusions

Owner's personal belongings.

Disclaimer

The Company offers the details of this vessel or yacht in good faith but cannot guarantee or warrant the accuracy of this information nor warrant the condition of the vessel. A buyer should instruct his representatives, agents, or his surveyors, to investigate such details as the buyer desires validated. This vessel or yacht is offered subject to prior sale, price change, or withdrawal without notice.

PHOTOS

7593718_20200918112120454_1_XLARGE



7593718_20200918112125101_1_XLARGE



7593718_20200918112148635_1_XLARGE



7593718_20200918112144271_1_XLARGE



7593718_20200918112110611_1_XLARGE



7593718_20200918112116122_1_XLARGE



7593718_20200918112239014_1_XLARGE



7593718_20200918112224238_1_XLARGE



7593718_20200918112217194_1_XLARGE



7593718_20200918112220341_1_XLARGE



7593718_20200918112152363_1_XLARGE



7593718_20200918112156160_1_XLARGE



7593718_20200918112159108_1_XLARGE



7593718_20200918112232241_1_XLARGE



7593718_20200918112236004_1_XLARGE



7593718_20200918112242049_1_XLARGE



7593718_20200918112249148_1_XLARGE



7593718_20200918112252145_1_XLARGE



7593718_20200918112245404_1_XLARGE



7593718_20200918112228010_1_XLARGE



7593718_20200918112325399_1_XLARGE



7593718_20200918112332450_1_XLARGE



7593718_20200918112329402_1_XLARGE



7593718_20200918112340584_1_XLARGE



7593718_20200918112344400_1_XLARGE



7593718_20200918112405362_1_XLARGE



7593718_20200918112308222_1_XLARGE



7593718_20200918112311394_1_XLARGE



7593718_20200918112315018_1_XLARGE



7593718_20200918112318078_1_XLARGE



7593718_20200918112256509_1_XLARGE



7593718_20200918112300343_1_XLARGE



7593718_20200918112304388_1_XLARGE



7593718_20200918112321301_1_XLARGE



7593718_20200918112336339_1_XLARGE



7593718_20200918112357381_1_XLARGE



7593718_20200918112348213_1_XLARGE



7593718_20200918112354194_1_XLARGE



7593718_20200918112412364_1_XLARGE



7593718_20200918112351277_1_XLARGE



7593718_20200918112425425_1_XLARGE



7593718_20200918112451490_1_XLARGE



7593718_20200918112455587_1_XLARGE



7593718_20200918112459396_1_XLARGE



7593718_20200918112513398_1_XLARGE

7593718_20200918112502788_1_XLARGE



7593718_20200918112520295_1_XLARGE



7593718_20200918112509664_1_XLARGE



7593718_20200918112506575_1_XLARGE



7593718_20200918112429512_1_XLARGE



7593718_20200918112437403_1_XLARGE



7593718_20200918112440550_1_XLARGE



7593718_20200918112448211_1_XLARGE

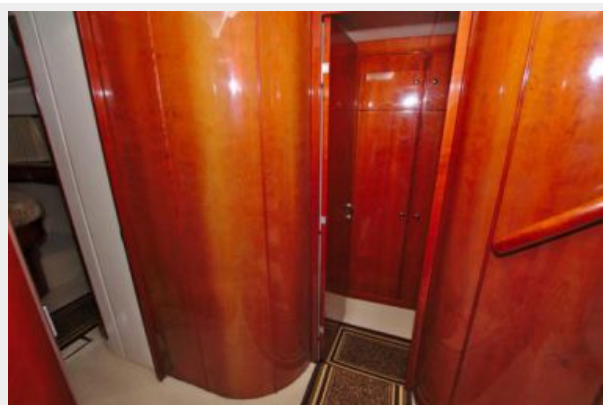


7593718_20200918112444651_1_XLARGE



7593718_20200918112527582_1_XLARGE

7593718_20200918112523567_1_XLARGE



7593718_20200918112531759_1_XLARGE



7593718_20200918112420623_1_XLARGE



7593718_20200918112535897_1_XLARGE



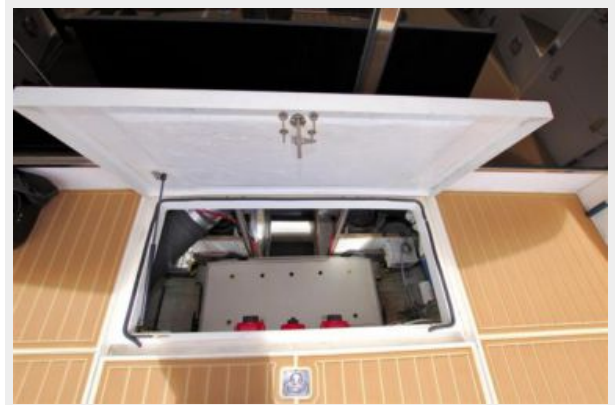
7593718_20200918112542275_1_XLARGE



7593718_20200918112545463_1_XLARGE



7593718_20200918112549475_1_XLARGE



7593718_20200918112555710_1_XLARGE



7593718_20200918112603538_1_XLARGE



7593718_20200918112552353_1_XLARGE



7593718_20200918112559665_1_XLARGE



7593718_20200918112607694_1_XLARGE



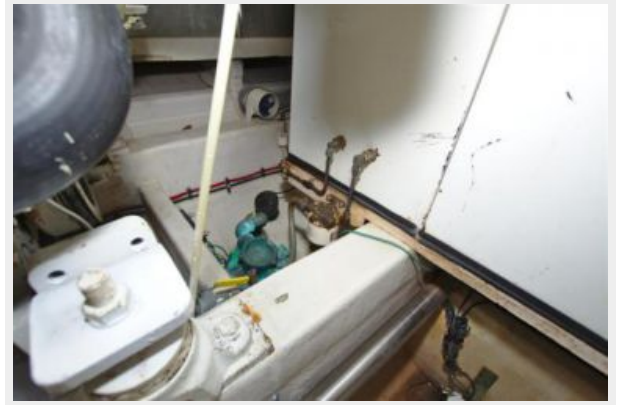
7593718_20200918112621028_1_XLARGE



7593718_20200918112611136_1_XLARGE



7593718_20200918112627320_1_XLARGE



7593718_20200918112624214_1_XLARGE



7593718_20200918112614174_1_XLARGE



7593718_20200918112617536_1_XLARGE



7593718_20200918112631783_1_XLARGE



7593718_20200918112635655_1_XLARGE



7593718_20200918112639578_1_XLARGE



7593718_20200918112647520_1_XLARGE



7593718_20200918112210302_1_XLARGE



7593718_20200918112206353_1_XLARGE



7593718_20200918112202236_1_XLARGE



7593718_20200918112214167_1_XLARGE



7593718_20200918112134727_1_XLARGE



CONTACTS

Andrey Shestakov, leading yacht broker of the sales department of Shestakov Yacht Sales Inc. Shestakov Yacht Sales Inc., the official representative of the Miami/Fort Lauderdale FL headquarters.

Contact details

Email: andrey@shestakovyachtsales.com

Web: shestakovyachtsales.com/en/

Telephones

USA: +1(954)274-4435

Office hours

Monday – Saturday: **9:00 - 21:00** EDT

Sunday: **closed**

Address



Harbour Towne Marina, 850 NE 3rd St,
STE 213, Dania, FL 33004