

EDELWEISS — HUNTER



Builder: HUNTER

Year Built: 2004

Model: Cruising Sailboat

Price: PRICE ON APPLICATION

Location: United States

LOA: 46' 1" (14.05m)

Beam: 14' 0" (4.27m)

Max Draft: 5' 6" (1.68m)

Our experienced yacht broker, Andrey Shestakov, will help you choose and buy a yacht that best suits your needs **EDELWEISS — HUNTER** from our catalogue. Presently, at Shestakov Yacht Sales Inc., we have a wide variety of yachts available on our sale's list. We also work in close contact with all the big yacht manufacturers from all over the world.

If you would like to buy a yacht **EDELWEISS — HUNTER** or would like help answering any questions concerning purchasing, selling or chartering a yacht, please call **+1(954)274-4435**

TABLE OF CONTENTS

TABLE OF CONTENTS	2
SPECIFICATIONS	7
Overview	7
Basic Information	7
Dimensions	7
Speed, Capacities and Weight	7
Accommodations	7
Hull and Deck Information	8
Engine Information	8
DETAILED INFORMATION	9
Overview	9
Exclusions	10
Disclaimer	10
PHOTOS	11
3	11
2	11
5	11
4	11
6	11
7	11
8	12
9	12
10	12
11	12
12	12
13	12
14	13
15	13

16	13
17	13
18	13
19	13
20	14
21	14
22	14
23	14
24	14
25	14
26	15
27	15
28	15
29	15
30	15
31	15
32	16
33	16
34	16
35	16
36	16
37	16
38	17
39	17
40	17
41	17
42	17
43	17
44	18

45	18
46	18
47	18
48	18
49	18
50	19
51	19
52	19
53	19
54	19
55	19
57	20
56	20
58	20
59	20
60	21
61	21
62	21
63	21
64	22
65	22
67	22
66	22
68	23
69	23
70	23
71	23
72	23
73	23

74	24
75	24
76	24
77	24
78	24
79	24
80	25
81	25
82	25
83	25
84	25
85	25
86	26
87	26
88	26
89	26
90	26
91	26
92	27
93	27
95	27
94	27
96	27
97	27
98	28
99	28
101	28
100	28
103	29

102	29
104	29
105	29
106	30
107	30
108	30
109	30
110	30
111	30
112	31
113	31
114	31
115	31
116	31
117	31
118	32
CONTACTS	33
Contact details	33
Telephones	33
Office hours	33
Address	33

SPECIFICATIONS

Overview

EDELWEISS is for sale by her original owners. She has been yard maintained and shows beautifully. She includes a set of brand-new, unused sails. Only 211 engine hours. Only 28 hours on generator. Stove never used. Owners are retiring from boat ownership and seek an immediate sale. She is in the water and may be easily seen. Photos taken on various days between July and September, 2020.

Basic Information

Category: Cruising Sailboat

Model Year: 2004

Year Built: 2004

Country: United States

Dimensions

LOA: 46' 1" (14.05m)

LWL: 39' 8" (12.09m)

Beam: 14' 0" (4.27m)

Max Draft: 5' 6" (1.68m)

MFG Length: 45' 0" (13.72m)

Speed, Capacities and Weight

Displacement: 26180 Pounds

Water Capacity: 200 Gallons

Holding Tank: 50 Gallons

Fuel Capacity: 100 Gallons

Accommodations

Total Cabins: 2

Total Heads: 2

Hull and Deck Information

Hull Material: Fiberglass

Hull Designer: Hunter Design Team

Engine Information

Engines: 1

Manufacturer: Yanmar

Model: 4JH3-TE

Engine Type: Inboard

Fuel Type: Diesel

DETAILED INFORMATION

Overview

Sail Area: 889.00 sq ft | J: 55.42 ft | I: 16.92 ft | P: 49.92 ft | E: 16.83 ft | Working Sail Area: 889.00 sq ft

Manufacturer Provided Description

The Hunter Passage 456 was designed, engineered and built to provide owners with the ultimate in comfort and livability. The spacious salon is both well ventilated and well lit with its many ports, hatches and the innovative Hunter windshield. Dining, entertaining, or just relaxing is all easily accomplished aboard the 456. Moving aft from the salon, the midcabin head is positioned to enhance access from the salon and cockpit areas. Corian counters, plentiful storage, and an easy-to-clean finish makes the head practical and good-looking. The owner's suite offers superb accommodations in an expansive area. A real queen-size, innerspring mattress adorns the master berth while a large amount of hanging lockers and shelving provide great storage. The combination shower and bathtub lie behind the custom shower door and the desk / computer station is perfect for the mobile executive. The Passage 456 also has a guest stateroom with a full-size double berth and a full set of drawers and hanging lockers, plus a private head with shower. The fully equipped galley has Corian-fiddled counters and a dual opening refrigerator for quick and easy access. Twin stainless sinks, a convenient cutting board, a gimballed range and oven, plus a microwave will thrill any chef. Secure storage and non-slip flooring makes cooking in a seaway safe and easy.

Accommodations

Sleeps six. Enclosed head forward with shower and vanity with Corian counter. Pullman double berth next aft to starboard, upholstered seat and locker opposite to port. Main salon next aft with settee to port, and dinette to starboard with centerline table. Galley next aft to port, navigation seat and table opposite to starboard. A passageway aft leads to the owner's stateroom which features a centerline queen-sized berth with ensuite separate head with vanity with Corian counter and shower with tub. Oceanair shades for ports. Teak and holly cabin sole. Marine Air Systems reverse-cycle air conditioning/heating system.

Galley

U-shaped galley features Adler Barbour refrigerator and freezer, Force 10 three burner, gimballed, stainless steel, propane stove with oven, Tappan microwave, double stainless steel sinks, and hot and cold pressurized water with 11 gallon hot water tank.

Electrical Systems

12 volt DC and 110 volt AC systems. 12 volt system includes two 4D house batteries, starting battery, battery selector switch, Xantrex Link 2000 12 volt monitoring system, and breaker panel. 110 volt system includes Kohler 8 KW generator with 28 hours, two 30 amp shore power cables, breaker panel.

Electronics and Navigation

In cockpit: Raymarine E80 GPS/chartplotter/radar, Raymarine ST 7001 Smartpilot autopilot, Raymarine ST60 knotmeter/log, septhsounder, and apparent windspeed/direction indicator, Raymarine RAM, Danforth pedestal-mounted compass. At navigation station: Raytheon E80 GPS/chartplotter/radar, Icom Icm-402 VHF transceiver.

Hull and Deck

Shoal draft wing keel model. Side-Power bow thruster (replaced 2018). Bow anchor roller. Lewmar electric windlass in recessed bow locker with up and down functions. Bow and stern pulpits with double lifelines, port and starboard boarding gates. Stainless steel hand rails on cabin top. Whitlock pedestal wheel steering. Six opening hatches, sixteen opening ports including seven in owner's stateroom.

Folding stainless steel swim ladder Midship cleats. Edson rail-mounted outboard motor bracket. Cockpit shower with hot and cold pressurized water. Swim platform at stern. Stainless steel arch. Sails and Rigging Deck stepped mast. Selden in-mast furling. Elvstrom mainsail and roller-furling genoa, never out of bags (2020). Original mainsail and roller-furling genoa. Mainsails have vertical battens. Electric halyard winch. Furlex 300S roller-furler for genoa. Selden Rodkicker solid boom vang. Lewmar winch inventory includes: two #48 self-tailing genoa sheet winches, one #44 self-tailing winch mounted on port cabin top with four line clutches for genoa halyard, outhaul, mainsail furler, One Lewmar #48 mounted on starboard cabin top with three line clutches for boom vang, mainsheet, and main halyard. Additional Inventory West Marine HP275 9' inflatable dinghy with inflatable floor with 5 hp Mariner outboard motor, navy blue dodger with zippered front window and side panels, navy blue bimini, Delta anchor with chain and rode, Sharp 23" TV with DVD and Bose speakers, Sony 52W4 CD-R/RW (XM ready) stereo with Bose speakers in cabin. Weems & Plath clock and barometer. Lifesling 2. Hunter dinnerware. Whale manual bilge pump. Docklines, fenders, boat hook. Cockpit table with leaves.

Exclusions

Owner's personal belongings.

Disclaimer

The Company offers the details of this vessel or yacht in good faith but cannot guarantee or warrant the accuracy of this information nor warrant the condition of the vessel. A buyer should instruct his representatives, agents, or his surveyors, to investigate such details as the buyer desires validated. This vessel or yacht is offered subject to prior sale, price change, or withdrawal without notice.

PHOTOS

2



3



4



5



6



7



8



9



10



11



12



13



14



15



16



17



18



19



20



21



22



23



24



25



26



27



28



29



30



31



32



33



34



35



36



37



38



39



40



41



42



43



44



45



46



47



48



49



50



51



52



53



54



55



56



57



58



59



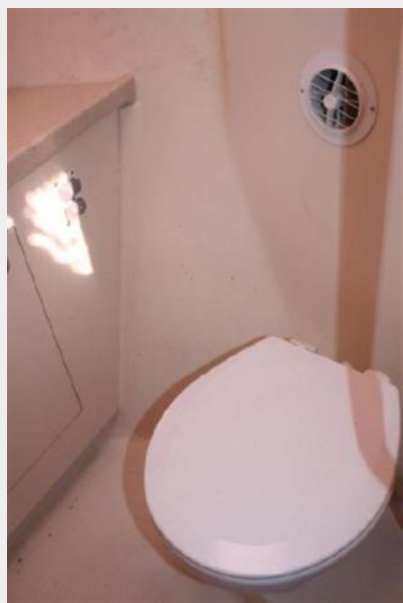
60



61



62



63



64



65



67



66



68



69



70



71



72



73



74



75



76



77



78



79



80



81



82



83



84



85



86



87



88



89



90



91



92



93



95



94



96



97



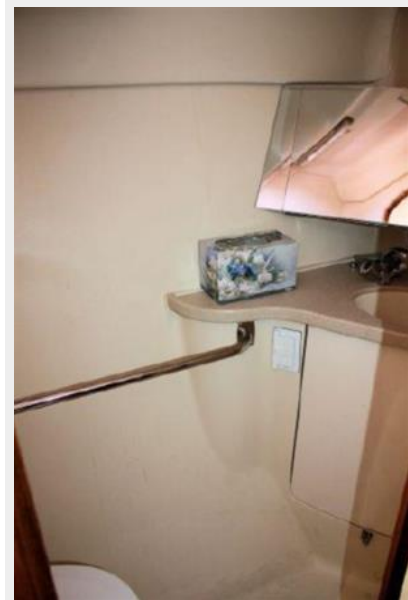
98



99



101



100



102



103



104



105



106



107



108



109



110



111



112



113



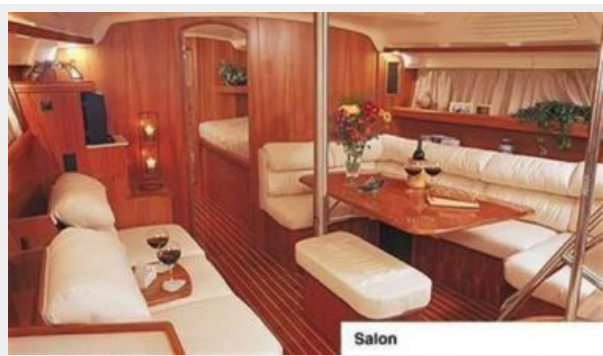
114



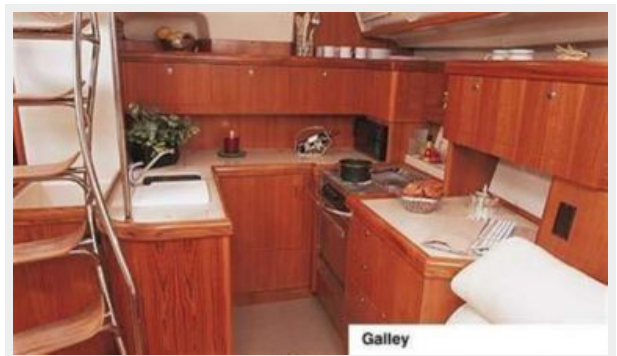
115



116



117



118



CONTACTS

Andrey Shestakov, leading yacht broker of the sales department of Shestakov Yacht Sales Inc. Shestakov Yacht Sales Inc., the official representative of the Miami/Fort Lauderdale FL headquarters.

Contact details

Email: andrey@shestakovyachtsales.com

Web: shestakovyachtsales.com/en/

Telephones

USA: +1(954)274-4435

Office hours

Monday – Saturday: **9:00 - 21:00** EDT

Sunday: **closed**

Address



Harbour Towne Marina, 850 NE 3rd St,
STE 213, Dania, FL 33004