

EDELWEISS — HUNTER



Судостроитель: HUNTER

Год постройки: 2004

Модель: Крейсерская яхта

Цена: **ЦЕНА ЯХТЫ ПО ЗАПРОСУ**

Местонахождение: United States

Длина общая: 46' 1" (14.05m)

Ширина: 14' 0" (4.27m)

Макс. осадка: 5' 6" (1.68m)

Купить **EDELWEISS — HUNTER** а также выбрать подходящую вам яхту из нашего каталога яхт вам поможет опытный яхтенный брокер Андрей Шестаков. На сегодняшний день компания **Shestakov Yacht Sales Inc.** имеет большое количество яхт в собственном списке продаж, а также тесно сотрудничает со всеми крупными яхтенными производителями по всему миру.

Для того чтобы купить яхту **EDELWEISS — HUNTER** а также проконсультироваться по любому вопросу связанному с покупкой, продажей, чартером яхт позвоните по телефону **+7(918)465-66-44**.

ОГЛАВЛЕНИЕ

| | |
|-------------------------------|----|
| ОГЛАВЛЕНИЕ | 2 |
| ХАРАКТЕРИСТИКИ | 7 |
| Обзор | 7 |
| Основная информация | 7 |
| Размеры | 7 |
| Скорость, вместимость и масса | 7 |
| Размещение | 7 |
| Корпус и палуба | 8 |
| Информация о двигателе | 8 |
| ПОДРОБНОЕ ОПИСАНИЕ | 9 |
| Overview | 9 |
| Исключения | 10 |
| Отказ от ответственности | 10 |
| ФОТОГРАФИИ | 11 |
| 3 | 11 |
| 2 | 11 |
| 5 | 11 |
| 4 | 11 |
| 6 | 11 |
| 7 | 11 |
| 8 | 12 |
| 9 | 12 |
| 10 | 12 |
| 11 | 12 |
| 12 | 12 |
| 13 | 12 |
| 14 | 13 |
| 15 | 13 |

| | |
|----|----|
| 16 | 13 |
| 17 | 13 |
| 18 | 13 |
| 19 | 13 |
| 20 | 14 |
| 21 | 14 |
| 22 | 14 |
| 23 | 14 |
| 24 | 14 |
| 25 | 14 |
| 26 | 15 |
| 27 | 15 |
| 28 | 15 |
| 29 | 15 |
| 30 | 15 |
| 31 | 15 |
| 32 | 16 |
| 33 | 16 |
| 34 | 16 |
| 35 | 16 |
| 36 | 16 |
| 37 | 16 |
| 38 | 17 |
| 39 | 17 |
| 40 | 17 |
| 41 | 17 |
| 42 | 17 |
| 43 | 17 |
| 44 | 18 |

| | |
|----|----|
| 45 | 18 |
| 46 | 18 |
| 47 | 18 |
| 48 | 18 |
| 49 | 18 |
| 50 | 19 |
| 51 | 19 |
| 52 | 19 |
| 53 | 19 |
| 54 | 19 |
| 55 | 19 |
| 57 | 20 |
| 56 | 20 |
| 58 | 20 |
| 59 | 20 |
| 60 | 21 |
| 61 | 21 |
| 62 | 21 |
| 63 | 21 |
| 64 | 22 |
| 65 | 22 |
| 67 | 22 |
| 66 | 22 |
| 68 | 23 |
| 69 | 23 |
| 70 | 23 |
| 71 | 23 |
| 72 | 23 |
| 73 | 23 |

| | |
|-----|----|
| 74 | 24 |
| 75 | 24 |
| 76 | 24 |
| 77 | 24 |
| 78 | 24 |
| 79 | 24 |
| 80 | 25 |
| 81 | 25 |
| 82 | 25 |
| 83 | 25 |
| 84 | 25 |
| 85 | 25 |
| 86 | 26 |
| 87 | 26 |
| 88 | 26 |
| 89 | 26 |
| 90 | 26 |
| 91 | 26 |
| 92 | 27 |
| 93 | 27 |
| 95 | 27 |
| 94 | 27 |
| 96 | 27 |
| 97 | 27 |
| 98 | 28 |
| 99 | 28 |
| 101 | 28 |
| 100 | 28 |
| 103 | 29 |

| | |
|-----------------------|-----------|
| 102 | 29 |
| 104 | 29 |
| 105 | 29 |
| 106 | 30 |
| 107 | 30 |
| 108 | 30 |
| 109 | 30 |
| 110 | 30 |
| 111 | 30 |
| 112 | 31 |
| 113 | 31 |
| 114 | 31 |
| 115 | 31 |
| 116 | 31 |
| 117 | 31 |
| 118 | 32 |
| КОНТАКТЫ | 33 |
| Контактная информация | 33 |
| Телефоны | 33 |
| Время работы | 33 |
| Адрес | 33 |

ХАРАКТЕРИСТИКИ

Обзор

EDELWEISS is for sale by her original owners. She has been yard maintained and shows beautifully. She includes a set of brand-new, unused sails. Only 211 engine hours. Only 28 hours on generator. Stove never used. Owners are retiring from boat ownership and seek an immediate sale. She is in the water and may be easily seen. Photos taken on various days between July and September, 2020.

Основная информация

Тип судна: Крейсерская яхта

Модельный год: 2004

Год постройки: 2004

Страна: United States

Размеры

Длина общая: 46' 1" (14.05m)

Длина по ватерлинии: 39' 8" (12.09m)

Ширина: 14' 0" (4.27m)

Макс. осадка: 5' 6" (1.68m)

Длина привального бруса: 45' 0"
(13.72m)

Скорость, вместимость и масса

Водоизмещение: 26180 Pounds

Вместимость воды: 200 Gallons

Вместимость сточного бака: 50 Gallons

Объем топливного бака: 100 Gallons

Размещение

Всего кают: 2

Всего ком. состава: 2

Корпус и палуба

Материал корпуса: Fiberglass

Дизайнер корпуса: Hunter Design Team

Информация о двигателе

Двигатели: 1

Производитель: Yanmar

Модель: 4JH3-TE

Тип двигателя: Inboard

Тип топлива: Diesel

ПОДРОБНОЕ ОПИСАНИЕ

Overview

Sail Area: 889.00 sq ft | JPE : 55.42 ft | J : 16.92 ft | P : 49.92 ft | E : 16.83 ft | Working Sail Area : 889.00 sq ft

Manufacturer Provided Description
The Hunter Passage 456 was designed, engineered and built to provide owners with the ultimate in comfort and livability. The spacious salon is both well ventilated and well lit with its many ports, hatches and the innovative Hunter windshield. Dining, entertaining, or just relaxing is all easily accomplished aboard the 456. Moving aft from the salon, the midcabin head is positioned to enhance access from the salon and cockpit areas. Corian counters, plentiful storage, and an easy-to-clean finish makes the head practical and good-looking. The owner's suite offers superb accommodations in an expansive area. A real queen-size, innerspring mattress adorns the master berth while a large amount of hanging lockers and shelving provide great storage. The combination shower and bathtub lie behind the custom shower door and the desk / computer station is perfect for the mobile executive. The Passage 456 also has a guest stateroom with a full-size double berth and a full set of drawers and hanging lockers, plus a private head with shower. The fully equipped galley has Corian-fiddled counters and a dual opening refrigerator for quick and easy access. Twin stainless sinks, a convenient cutting board, a gimbaled range and oven, plus a microwave will thrill any chef. Secure storage and non-slip flooring makes cooking in a seaway safe and easy.

Accommodations
Sleeps six. Enclosed head forward with shower and vanity with Corian counter. Pullman double berth next aft to starboard, upholstered seat and locker opposite to port. Main salon next aft with settee to port, and dinette to starboard with centerline table. Galley next aft to port, navigation seat and table opposite to starboard. A passageway aft leads to the owner's stateroom which features a centerline queen-sized berth with ensuite separate head with vanity with Corian counter and shower with tub. Oceanair shades for ports. Teak and holly cabin sole. Marine Air Systems reverse-cycle air conditioning/heating system.

Galley
U-shaped galley features Adler Barbour refrigerator and freezer, Force 10 three burner, gimbaled, stainless steel, propane stove with oven, Tappan microwave, double stainless steel sinks, and hot and cold pressurized water with 11 gallon hot water tank.

Electrical Systems
12 volt DC and 110 volt AC systems. 12 volt system includes two 4D house batteries, starting battery, battery selector switch, Xantrex Link 2000 12 volt monitoring system, and breaker panel. 110 volt system includes Kohler 8 KW generator with 28 hours, two 30 amp shore power cables, breaker panel.

Electronics and Navigation
In cockpit: Raymarine E80 GPS/chartplotter/radar, Raymarine ST 7001 Smartpilot autopilot, Raymarine ST60 knotmeter/log, septhsounder, and apparent windspeed/direction indicator, Raymarine RAM, Danforth pedestal-mounted compass. At navigation station: Raytheon E80 GPS/chartplotter/radar, Icom Icm-402 VHF transceiver.

Hull and Deck
Shoal draft wing keel model. Side-Power bow thruster (replaced 2018). Bow anchor roller. Lewmar electric windlass in recessed bow locker with up and down functions. Bow and stern pulpits with double lifelines, port and starboard boarding gates. Stainless steel hand rails on cabin top. Whitlock pedestal wheel steering. Six opening hatches, sixteen opening ports including seven in owner's stateroom.

Folding stainless steel swim ladder Midship cleats. Edson rail-mounted outboard motor bracket. Cockpit shower with hot and cold pressurized water. Swim platform at stern. Stainless steel arch. Sails and RiggingDeck stepped mast. Selden in-mast furling. Elvstrom mainsail and roller-furling genoa, never out of bags (2020). Original mainsail and roller-furling genoa. Mainsails have vertical battens. Electric halyard winch. Furlex 300S roller-furler for genoa. Selden Rodkicker solid boom vang. Lewmar winch inventory includes: two #48 self-tailing genoa sheet winches, one #44 self-tailing winch mounted on port cabin top with four line clutches for genoa halyard, outhaul, mainsail furler, One Lewmar #48 mounted on starboard cabin top with three line clutches for boom vang, mainsheet, and main halyard. Additional Inventory West Marine HP275 9' inflatable dinghy with inflatable floor with 5 hp Mariner outboard motor, navy blue dodger with zippered front window and side panels, navy blue bimini, Delta anchor with chain and rode, Sharp 23" TV with DVD and Bose speakers, Sony 52W4 CD-R/RW (XM ready) stereo with Bose speakers in cabin. Weems & Plath clock and barometer. Lifesling 2. Hunter dinnerware. Whale manual bilge pump. Docklines, fenders, boat hook. Cockpit table with leaves.

Исключения

При продаже яхты исключаются личные вещи владельца.

Отказ от ответственности

Компания предоставляет описание судна или яхты добросовестно, но не может гарантировать точность этой информации, а также не ручается за техническое состояние. Покупатель должен проинструктировать своих агентов или оценщиков исследовать представленную информацию более подробно, по собственному желанию. Продажа судна или яхты, изменение цены или снятие с продажи будет происходить без предварительного уведомления.

ФОТОГРАФИИ

2



3



4



5



6



7



8



9



10



11



12



13



14



15



16



17



18



19



20



21



22



23



24



25



26



27



28



29



30



31



32



33



34



35



36



37



38



39



40



41



42



43



44



45



46



47



48



49



50



51



52



53



54



55



56



57



58



59



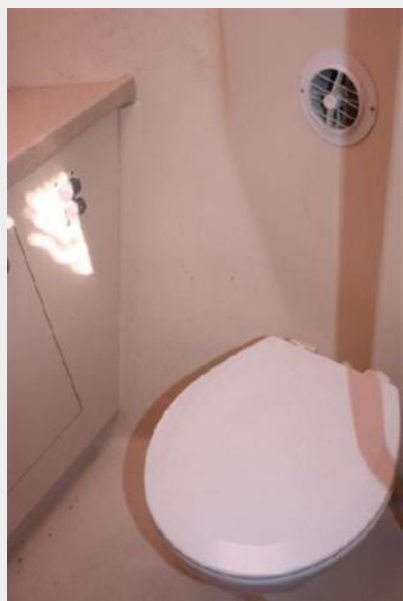
60



61



62



63



64



65



67



66



68



69



70



71



72



73



74



75



76



77



78



79



80



81



82



83



84



85



86



87



88



89



90



91



92



93



95



94



96



97



98



99



101



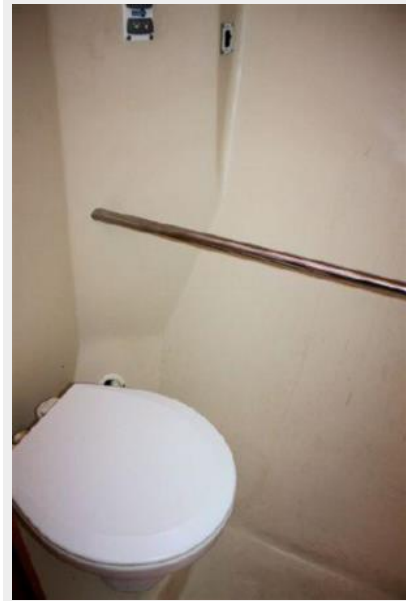
100



102



103



104



105



106



107



108



109



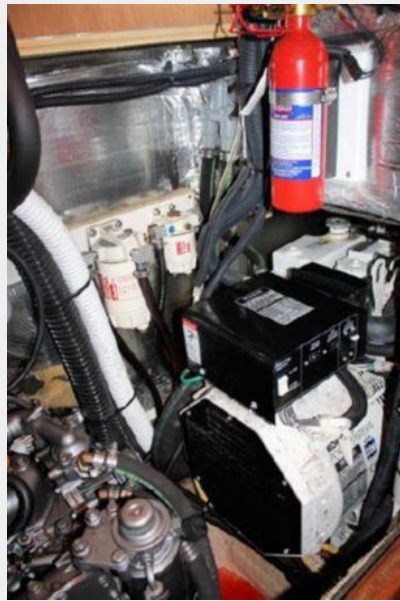
110



111



112



113



114



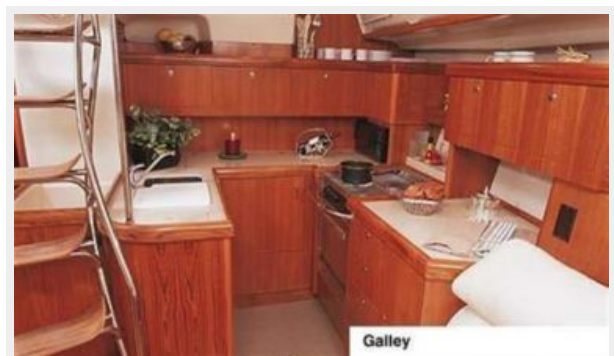
115



116



117



118



КОНТАКТЫ

Андрей Шестаков (Andrey Shestakov) – ведущий яхтенный брокер отдела продаж яхт и судов компании Shestakov Yacht Sales Inc. Официальный представитель Shestakov Yacht Sales Inc. для русскоговорящих клиентов в центральном офисе компании в Майами/Форт Лодердейл/Флорида/США.

Контактная информация

Email: andrey@shestakovyachtsales.com

Web: shestakovyachtsales.com

Телефоны

Краснодарский край: **+7(918)465-66-44**

США, Майами, Флорида: **+1(954)274-4435**

Время работы

Понедельник – Суббота: **9:00 - 21:00**
EDT

Воскресенье: **Закрито**

Адрес



Harbour Towne Marina, 850 NE 3rd St,
STE 213, Dania, FL 33004