

## TATOOSH II — ERICSON YACHTS



**Builder:** ERICSON YACHTS

**Year Built:** 1979

**Model:** Cruising Sailboat

**Price:** PRICE ON APPLICATION

**Location:** United States

**LOA:** 39' 0" (11.89m)

**Beam:** 12' 0" (3.66m)

**Max Draft:** 5' 0" (1.52m)

Our experienced yacht broker, Andrey Shestakov, will help you choose and buy a yacht that best suits your needs **Tatoosh II — ERICSON YACHTS** from our catalogue. Presently, at Shestakov Yacht Sales Inc., we have a wide variety of yachts available on our sale's list. We also work in close contact with all the big yacht manufacturers from all over the world.

If you would like to buy a yacht **Tatoosh II — ERICSON YACHTS** or would like help answering any questions concerning purchasing, selling or chartering a yacht, please call **+1(954)274-4435**

# TABLE OF CONTENTS

TABLE OF CONTENTS	2
SPECIFICATIONS	5
Overview	5
Basic Information	5
Dimensions	5
Speed, Capacities and Weight	5
Accommodations	6
Hull and Deck Information	6
Engine Information	6
DETAILED INFORMATION	7
Overview	7
Exclusions	7
Disclaimer	8
PHOTOS	9
2	9
3	9
4	9
5	9
7	9
6	9
8	10
9	10
10	10
11	10
12	10
13	10
14	11
15	11

---

16	11
17	11
18	11
19	11
20	12
21	12
22	12
23	12
24	12
25	12
27	13
26	13
28	13
29	13
30	14
31	14
32	14
33	14
34	14
35	14
36	15
37	15
39	15
38	15
40	16
41	16
42	16
43	16
44	17

---

---

45	17
46	17
47	17
48	17
49	17
50	18
51	18
CONTACTS	19
Contact details	19
Telephones	19
Office hours	19
Address	19

---

# SPECIFICATIONS

---

## Overview

---

The Bruce King-designed Ericson 36C is a true cruiser. With her cutter rig, clipper bow, and comfortable cabin, she was designed to cruise. Tatoosh II, hull 59 of 66 built, has been a liveaboard for the past 14 years. For sale now because the family has expanded and moved ashore. She is reasonably priced, located in downtown Boston, ready for you to move aboard, or sail off on new adventures.

## Basic Information

---

**Category:** Cruising Sailboat

**Sub Category:** Cutter

**Model Year:** 1979

**Year Built:** 1979

**Country:** United States

## Dimensions

---

**LOA:** 39' 0" (11.89m)

**LWL:** 30' 0" (9.14m)

**LOD:** 36' 0" (10.97m)

**Beam:** 12' 0" (3.66m)

**Max Draft:** 5' 0" (1.52m)

**Clearance:** 50' 0" (15.24m)

**MFG Length:** 36' 0" (10.97m)

## Speed, Capacities and Weight

---

**Displacement:** 17600 Pounds

**Water Capacity:** 130 Gallons

**Holding Tank:** 12 Gallons

**Fuel Capacity:** 70 Gallons

---

## Accommodations

---

**Total Cabins:** 1

**Total Heads:** 1

---

## Hull and Deck Information

---

**Hull Material:** Fiberglass

**Hull Finish:** Stainless Steel

---

## Engine Information

---

**Engines:** 1

**Manufacturer:** Kubota

**Model:** 4 cylinder

**Engine Type:** Inboard

**Fuel Type:** Diesel

---

# DETAILED INFORMATION

---

## Overview

---

Accommodations Sleeps six. V berth forward, hanging locker to starboard, storage locker with shelves to port. Main cabin next aft with settees port and starboard. Fixed centerline table with leaves. Galley next aft to starboard, enclosed head with LaVac toilet opposite to port. Aft cabin and nav station area are aft to starboard. Joinerwork below is Koa wood with teak trim. Headliner and ceilings are finished in Koa wood strips, and cabin sole is Koa wood. Newport Dickinson bulkhead-mounted 12,000 BTU propane cabin heater. Galley L-shaped galley features a Force 10 three-burner propane stove with oven, DC Isotherm SP (self-pumping) ASU (automatic start-up) refrigeration, double stainless steel sink, and hot and cold pressurized water. Electrical System 12 volt DC and 110 volt AC dockside systems. 12 volt system has four batteries including two 6 volt house batteries, a 12 volt AGM engine start battery, and a 12 volt AGM windlass battery, Pathfinder electronic battery switch, Statpower True 20 amp automatic battery charger, and Blue Sea breaker panel with voltmeter. 110 volt dockside system includes Blue Sea breaker panel, reverse polarity indicator, and two 50' shore power cables. Electronics and Navigation Raymarine RL70C color chartplotter with HSB2 at helm and nav station below, Raynav 300 chartplotter/radar (needs radar antenna for radar to work), Raymarine 6001 autopilot, Raymarine ST60 knotmeter/log, depth, and apparent wind speed/wind direction indicator, Raymarine VHF, Raymarine ST40 knotmeter/log and apparent wind speed/direction indicator at nav station, 6" pedestal-mounted Danforth compass. Hull and Deck Modified full keel design with transom-hung rudder. Encapsulated lead ballast. Bottom was peeled in 2002 and re-gelcoated. Teak foredeck and cockpit area. Bow sprit with anchor roller. Double lifelines. Muir electric windlass with remote control and chain counter in cockpit. Pedestal wheel steering with teak wheel. Pedestal new in 2002. Butterfly hatch over main cabin, Three other opening hatches. Two dorade vents, two clamshell vents. Seven opening ports. Sails and Rigging Cutter rigged with aluminum keel-stepped mast. Navtec rod rigging. Alado roller-furling system on headstay, Seafurl 5 roller-furling system on staysail stay. Sail inventory includes Hood mainsail, roller-furling headsail, roller-furling staysail, and drifter. Garhauer rigin manual boom vang (2001), spinnaker pole, four line clutches on cabin top. Winch inventory includes eight Bariant self-tailing winches including two #27 for jib/genoa sheets, three #22's on cabin top, and three #19's on mast. Rig was customized by Bruce King with a short bowsprit and an extended boom (3'), resulting in an increased sail area (702 sq. ft.) and improved light air performance.

## Exclusions

---

Owner's personal belongings.

---

## Disclaimer

---

The Company offers the details of this vessel or yacht in good faith but cannot guarantee or warrant the accuracy of this information nor warrant the condition of the vessel. A buyer should instruct his representatives, agents, or his surveyors, to investigate such details as the buyer desires validated. This vessel or yacht is offered subject to prior sale, price change, or withdrawal without notice.



# PHOTOS

2



3



4



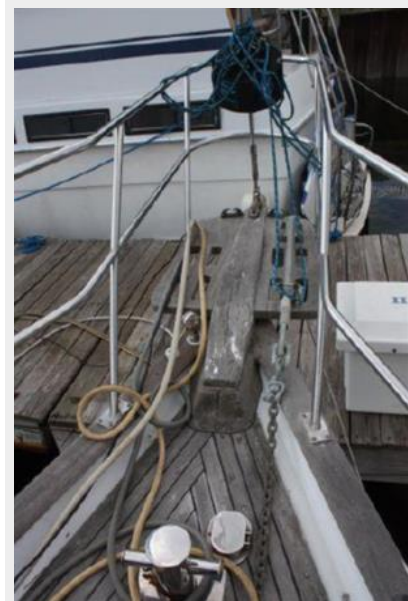
5



6



7



8



9



10



11



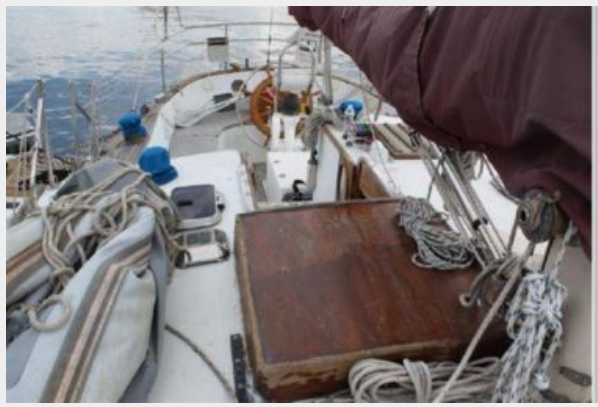
12



13



14



15



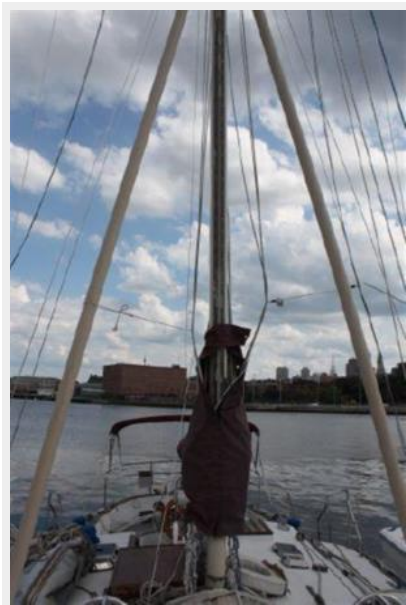
16



17



18



19



20



21



22



23



24



25



26



27



28



29



30



31



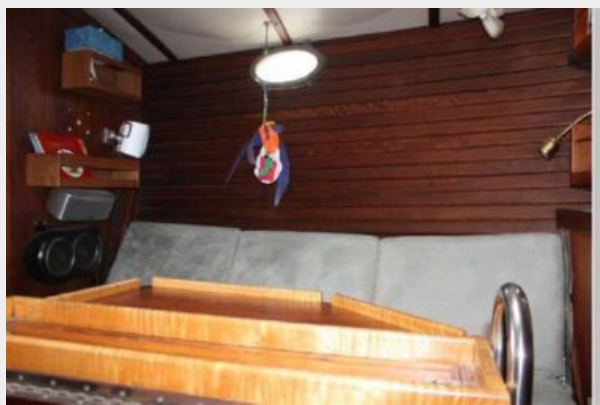
32



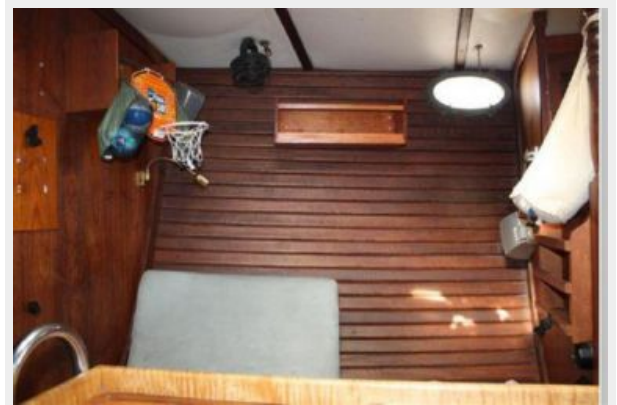
33



34



35



36



37



39



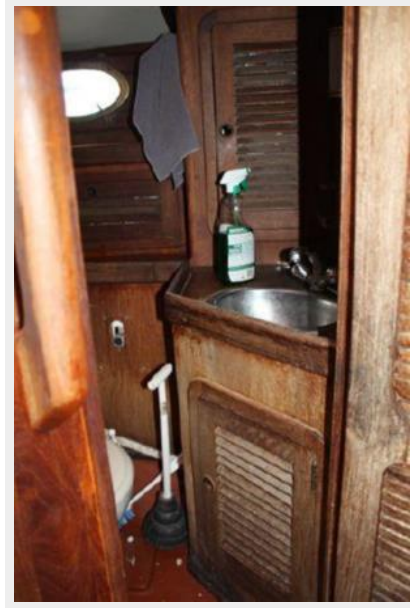
38



40



41



42



43





44



45



46



47



48



49



50



51



# CONTACTS

---

Andrey Shestakov, leading yacht broker of the sales department of Shestakov Yacht Sales Inc. Shestakov Yacht Sales Inc., the official representative of the Miami/Fort Lauderdale FL headquarters.

## Contact details

---

Email: [andrey@shestakovyachtsales.com](mailto:andrey@shestakovyachtsales.com)

Web: [shestakovyachtsales.com/en/](http://shestakovyachtsales.com/en/)

## Telephones

---

USA: +1(954)274-4435

## Office hours

---

Monday – Saturday: **9:00 - 21:00** EDT

Sunday: **closed**

## Address

---



Harbour Towne Marina, 850 NE 3rd St,  
STE 213, Dania, FL 33004