

NYOTA — MARLOW



Builder: MARLOW

Year Built: 2013

Model: Cruising Sailboat

Price: PRICE ON APPLICATION

Location: United States

LOA: 41' 3" (12.57m)

Beam: 13' 2" (4.01m)

Max Draft: 5' 2" (1.57m)

Cruise Speed: 7.5 Kts. (9 MPH)

Our experienced yacht broker, Andrey Shestakov, will help you choose and buy a yacht that best suits your needs **Nyota — MARLOW** from our catalogue. Presently, at Shestakov Yacht Sales Inc., we have a wide variety of yachts available on our sale's list. We also work in close contact with all the big yacht manufacturers from all over the world.

If you would like to buy a yacht **Nyota — MARLOW** or would like help answering any questions concerning purchasing, selling or chartering a yacht, please call **+1(954)274-4435**

TABLE OF CONTENTS

TABLE OF CONTENTS	2
SPECIFICATIONS	5
Overview	5
Basic Information	5
Dimensions	5
Speed, Capacities and Weight	5
Accommodations	5
Hull and Deck Information	6
Engine Information	6
DETAILED INFORMATION	7
Overview	7
Exclusions	9
Disclaimer	9
PHOTOS	10
photo 02	10
photo 03	10
photo 04	10
photo 05	10
photo 06	10
photo 07	10
photo 08	11
photo 09	11
photo 10	11
photo 11	11
photo 12	11
photo 13	11
photo 14	12
photo 15	12

photo 16	12
photo 17	12
photo 18	12
photo 19	12
photo 20	13
photo 21	13
photo 22	13
photo 23	13
photo 24	13
photo 25	13
photo 26	14
photo 27	14
photo 28	14
photo 29	14
photo 30	14
photo 31	14
photo 32	15
photo 33	15
photo 34	15
photo 35	15
photo 36	15
photo 37	15
photo 38	16
photo 39	16
photo 40	16
photo 41	16
photo 42	16
photo 43	16
photo 44	17

photo 45	17
photo 46	17
photo 47	17
photo 48	17
photo 49	17
photo 50	18
photo 51	18
photo 52	18
photo 53	18
photo 54	18
CONTACTS	19
Contact details	19
Telephones	19
Office hours	19
Address	19

SPECIFICATIONS

Overview

The Marlow Hunter 40 is fast under power and sail, easily handled in close quarters and a very easy to sail cruising boat. She features twin wheels in the cockpit, easy to tack 110% Genoa and a Selden in-mast furling vertical battened main sail controlled by a double ended mainsheet. All sails controlled from helm, making her the easiest boat to sail single handed or with crew among her competition. Her wide beam and strategic placement of the compression post really opens the salon to immense proportions for a 40 footer and the 2 cabin/2 head layout is perfect for cruising couples or families.

Basic Information

Category: Cruising Sailboat

Model Year: 2013

Year Built: 2013

Country: United States

Dimensions

LOA: 41' 3" (12.57m)

LWL: 36' 0" (10.97m)

Beam: 13' 2" (4.01m)

Max Draft: 5' 2" (1.57m)

MFG Length: 40' 0" (12.19m)

Speed, Capacities and Weight

Cruise Speed: 7.5 Kts. (9 MPH)

Displacement: 19098 Pounds

Water Capacity: 90 Gallons

Fuel Capacity: 50 Gallons

Accommodations

Total Cabins: 2

Sleeps: 7

Total Heads: 2

Hull and Deck Information

Hull Material: Fiberglass

Engine Information

Engines: 1

Manufacturer: Yanmar

Model: 4JH5E Autoprop SD-435 3-Blade
Feathering Propeller

Engine Type: Sail Drive

Fuel Type: Diesel

DETAILED INFORMATION

Overview

- Twin Wheel Steering
- Voltage: 12V/110
- Batteries: 12V Start & 6 x 6V House
- Battery Charger

Accommodations

- Aft Cabin
 - V-Berth Double with Head
 - Main Salon Double & Single
 - Duvet Bedding
 - Inner Spring Mattresses (Both Cabins)
 - Three Showers
 - Hot & Cold Pressured Water
 - Two Heads
 - Holding Tank (40 Gals)
-
- Force 10 Two Burner Stove w/ Oven & Broiler
 - Refrigeration
 - Freezer
 - Oyster Leather Salon Upholstery
 - Supreme Shade Package
 - LED Lighting
 - Microwave
 - CO Detectors

RIG/MATERIALS

- Selden Aluminum Mast
- Boom Vang
- Stainless Steel Rigging
- In-Mast Furling
- Doyle Vertical Battened Mainsail
- Doyle 110% Genoa with UV Cover
- Lewmar Winches - 2 Primary & 2 Secondary (all self-tailing)
- Dodger with Side Handles
- Bridge Window
- Bimini Set with Sky Window
- Full Enclosure

EQUIPMENT

- Rocna Anchor
- Lewmar Windlass
- Ritchie Compass (x2)

NAVIGATION

- Raymarine e125w Chartplotter with Internal GPS
- Raymarine I70 Package
- Raymarine Autopilot & Remote
- Comnav AIS Class B (transmit/receive)
- Icom VHF with Command Mic
- LED Masthead Anchor Light

EXTRAS

- Lewmar Bow Thruster
- 30amp Shorepower Cord (2)
- Sole TV & DVD Player
- Stereo with Interior & Exterior Speakers

Exclusions

Owner's personal belongings.

Disclaimer

The Company offers the details of this vessel or yacht in good faith but cannot guarantee or warrant the accuracy of this information nor warrant the condition of the vessel. A buyer should instruct his representatives, agents, or his surveyors, to investigate such details as the buyer desires validated. This vessel or yacht is offered subject to prior sale, price change, or withdrawal without notice.

PHOTOS

photo 02



photo 03



photo 04



photo 05



photo 06



photo 07



photo 08



photo 09



photo 10



photo 11



photo 12



photo 13



photo 14



photo 15



photo 16



photo 17



photo 18



photo 19



photo 20



photo 21



photo 22



photo 23



photo 24



photo 25



photo 26



photo 27



photo 28



photo 29



photo 30



photo 31



photo 32



photo 33



photo 34



photo 35



photo 36



photo 37



photo 38



photo 39



photo 40



photo 41



photo 42



photo 43



photo 44



photo 45



photo 46



photo 47



photo 48



photo 49

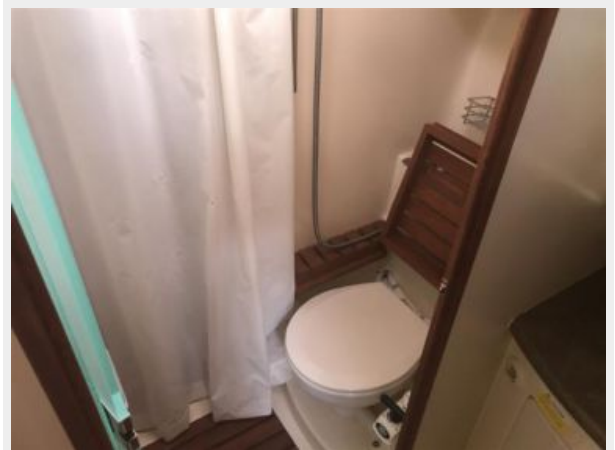


photo 50



photo 51

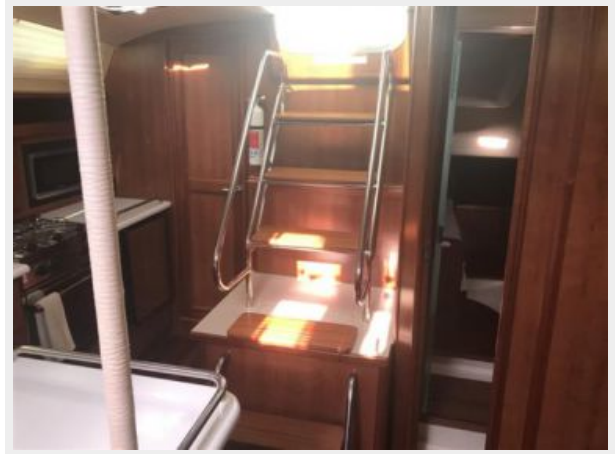


photo 52



photo 53



photo 54



CONTACTS

Andrey Shestakov, leading yacht broker of the sales department of Shestakov Yacht Sales Inc. Shestakov Yacht Sales Inc., the official representative of the Miami/Fort Lauderdale FL headquarters.

Contact details

Email: andrey@shestakovyachtsales.com

Web: shestakovyachtsales.com/en/

Telephones

USA: +1(954)274-4435

Office hours

Monday – Saturday: **9:00 - 21:00** EDT

Sunday: **closed**

Address



Harbour Towne Marina, 850 NE 3rd St,
STE 213, Dania, FL 33004