

LUNAR MIST — WINDSHIP YACHTS



Builder: WINDSHIP YACHTS

Year Built: 1992

Model: Cruising Sailboat

Price: PRICE ON APPLICATION

Location: United Kingdom

LOA: 104' 0" (31.70m)

Beam: 23' 8" (7.20m)

Min Draft: 11' 6" (3.50m)

Max Draft: 11' 6" (3.50m)

Cruise Speed: 11 Kts. (13 MPH)

Max Speed: 13 Kts. (15 MPH)

Our experienced yacht broker, Andrey Shestakov, will help you choose and buy a yacht that best suits your needs **LUNAR MIST — WINDSHIP YACHTS** from our catalogue. Presently, at Shestakov Yacht Sales Inc., we have a wide variety of yachts available on our sale's list. We also work in close contact with all the big yacht manufacturers from all over the world.

If you would like to buy a yacht **LUNAR MIST — WINDSHIP YACHTS** or would like help answering any questions concerning purchasing, selling or chartering a yacht, please call **+1(954)274-4435**

TABLE OF CONTENTS

TABLE OF CONTENTS	2
SPECIFICATIONS	3
Overview	3
Basic Information	3
Dimensions	3
Speed, Capacities and Weight	3
Accommodations	4
Hull and Deck Information	4
Engine Information	4
DETAILED INFORMATION	5
FULL SPECIFICATION	5
Exclusions	13
Disclaimer	14
PHOTOS	15
GA - LUNAR MIST	20
CONTACTS	21
Contact details	21
Telephones	21
Office hours	21
Address	21

SPECIFICATIONS

Overview

**** ALL OFFERS WILL NOW BE CONSIDERED ****

Lunar Mist is a 104ft sloop designed by Bill Tripp and built by Windship in 1992. She is ideally suited for long range cruising and comes terrific 'large yacht' features. LM has 4 x dedicated double guest cabins (each with bathrooms), spacious saloon and dining table for 8, large crew accommodation and an excellent central cockpit midships for guest socialising and dining whilst under sail. LM would be an ideal charter yacht which we believe could return an excellent income to offset against annual running costs.

Basic Information

Category: Cruising Sailboat

Model Year: 1992

Year Built: 1992

Country: United Kingdom

Dimensions

LOA: 104' 0" (31.70m)

LWL: 87' 4" (26.60m)

Beam: 23' 8" (7.20m)

Min Draft: 11' 6" (3.50m)

Max Draft: 11' 6" (3.50m)

Speed, Capacities and Weight

Cruise Speed: 11 Kts. (13 MPH)

Max Speed: 13 Kts. (15 MPH)

Displacement: 216053.01676 Pounds

Gross Tonnage: 95 Pounds

Water Capacity: 2020.9161978 Gallons

Fuel Capacity: 1921.587506248 Gallons

Accommodations

Total Cabins: 4

Total Berths: 8

Sleeps: 8

Total Heads: 5

Crew Cabin: 5

Crew Berths: 5

Crew Sleeps: 5

Crew Heads: 2

Hull and Deck Information

Hull Material: GRP

Deck Material: Teak

Hull Configuration: Deep Fin

Hull Color: Light Grey

Hull Finish: Fiberglass

Hull Designer: Bill Tripp

Exterior Designer: Bill Tripp

Interior Designer: Donald Starkey

Engine Information

Engines: 1

Manufacturer: Luger

Model: L6125A

Engine Type: Inboard

Fuel Type: Diesel

DETAILED INFORMATION

FULL SPECIFICATION

S.Y LUNAR MIST

BROKER COMMENTS: If you are looking to buy a 100ft+ world cruiser at excellent value 'Lunar Mist' is probably the best opportunity you will find actively for sale today. Our client is price realistic and a very focussed seller. To fully appreciate this excellent offering, Carrswood Yachts encourage you to visit the yacht in Portsmouth, UK – viewings by appointment only. The yacht would benefit from a comprehensive refit; the seller is therefore offering LM at an attractive asking price inclusive of VAT

Lunar Mist is a 104ft sloop which was designed by Bill Tripp and built by Windship, USA in 1992. The yacht is ideally suited for round the world cruising and comes with particularly good 'large yacht' features which make her an ideal family yacht. LM has 4 x dedicated double guest cabins (each with their own bathrooms), very large crew accommodation and a central cockpit midships for guest socialising and dining. LM would also be an ideal charter yacht which we believe could return an excellent income to offset against annual running costs.

Type:	Sloop rigged pleasure yacht
Built by:	Windship Trident Shipworks, Tampa. Florida
Year:	1992 (Refit 2015)
Lying:	Southampton, UK
Naval Architect:	Bill Tripp, USA
Interior Design:	Donald Starkey
Registration:	British ON 722550 / London
Hull & deck:	Composite construction of biaxial E glass, Kevlar and PVC foam core
Keel:	Lead ballast on stainless steel keel
Mast & boom:	Carbon composite
LOA:	31.7m / 104 feet
LWL:	26.6m / 87 feet
BEAM:	7.2m / 23'6" feet

DRAFT: 3.5m / 11'4" feet
DISPLACEMENT: 98 tonnes (half load)
GROSS TONNAGE: 95t

MACHINERY:

Main engine: Lugger L6125A (six cylinder) rated 325hp @ 1800rpm
Engine hours: 9,749 hours (Sept 2020)
Gearbox: Twin Disc MG5111A
Propeller: Hundested VP5FR-HY variable pitch controlled
Cruising speed: 11 knots

GENERATORS:

1 x 27Kw (50HZ) Kohler 27EFOZD 220v (1500rpm)
Hours run = 3,440 (Sept 2020)

1 x 17Kw (50HZ) Kohler 17EFOZD 220v (1500rpm)
Hours run = 1,553 (Sept 2020)

BATTERYS:

Auxiliary supply:

2 x banks of Gel 12v 210ah x 10 = 1050ah each at 24v (2100ah total)

Main engine crank:

2 x Vetus AGM 229ah @ 24v

Generators crank:

2 x Vetus AGM 140ah @12v

Emergency Navigation & communications:

2 x Exide Gel 210ah @24v

CHARGING:

2 x 175ah 24v main engine mounted alternators charging domestic bank

1 x alternator charging engine crank batteries

2 x 24v 100ah Victron Battery charger – both charging the service batteries

1 x 24v 25ah Sterling Battery Charger – charging emergency batteries

1 x Shark 12v 26ah charger – charging the generator crank batteries

1 x Quick 24v 30ah battery charger – charging engine start batteries

AC SHORE POWER:

2 x 220/240V Hubbell shore connection points forward and aft (switchable supply)

60amp supply

220v supply throughout the yacht

1 x Victron 5000W 24v inverter auto starting when no shore power. Inverter supplies all 13ah sockets, refrigeration & entertainment / AV

HYDRAULICS:

- 2 x 24 volt 6kw hydraulic pumps (standalone system in engine room) power deck winches, Reckmann genoa furler, transom door, Hundested propeller pitch control & mainsheet traveller
- 1 x PTO powered by 27Kw Generator. Supplying bow thruster and windlass only
- 1 x 24v dedicated hydraulic system (located lazarette) powers Simrad automatic pilot.
- 2 x Navtec manual switchable hydraulic pumps (one fwd and one aft)

Aft controls:

- Vang
- Main outhaul
- Baby stay tensioner
- Backstay adjustment

Fwd controls:

- forestay tensioner
- 2 x mast halyard tensioners
- mainsail Cunningham tensioner

AIR CONDITIONING:

220v Central Cruiseair air conditioning system in engine room.

Two chillers (each 60,000 BTU) serve a chilled water main in engine room

Chilled water main supplies following areas – each with thermostat controls:

Captains cabin, crew cabin, crew area, crew mess, galley, dining area, saloon, pilot house and guest cabins

TANKAGE:

Diesel

Total capacity = 7,274 litres (1,600 gal)

Stored in 4 x individual GRP integral tanks

Controlled by a 24v transfer pump and switching valve manifolds

Fresh water

Total capacity = 7,650 litres (1,685 gal)

Stored in 2 x GRP tanks under the saloon

Hot water is supplied by 2 x 80 litre 220v immersion heaters

Black water

1 x 227 litre central waste tank supplied by all toilets onboard. Ability to divert overboard or via deck pump out facility

Grey water

5 x Grey water tanks – each with macerators.

Handling wastewater from sinks, showers, air-conditioners, wash machine, dishwasher and refrigeration condensers.

WATERMAKER:

Hydro Electric Marine HEM water maker located in lazarette

TOILETS:

TECMA electric fresh water fed sea toilets

BILGE PUMPS:

1 x Central 24v Jabsco pump located in the engine room linked to various bilges

1 x Sealand 24v diaphragm pump in forward sail locker with bilge alarm

1 x Jabsco 24v submersible pump with float switch and alarm in keel sump

All pumps are switched at the main distribution panel and have alarm gauges

WATERTIGHT COMPARTMENTS:

Lunar Mist has 3 x watertight compartments:

Forepeak sail locker

Guest to Crew accommodation / engine room

Transom locker/lazarette

STEERING SYSTEM:

Twin wheel helm position in dedicated aft cockpit

The steering is controlled by chain link from the twin wheel pedestals and is direct. Stainless steel wire connects to the chain then to the central steering quadrant

Emergency tiller connection

SIMRAD auto pilot controlled by dedicated hydraulic powerpack in the lazarette

BOWTHRUSTER:

Lewmar / Richfield 400RA 50hp retractable hydraulic bow thruster. Powered by 27kw generator PTO

DECK WINCHES:

All stainless steel hydraulic powered winches

2 x Barient 20ST Primary winches (aft cockpit accessed)

2 x Barient 737-3ST running backstay winches (aft cockpit accessed)

1 x Barent Central 19ST mainsheet winch (aft cockpit controlled)

6 x winches at the mast (4 x Harken 980 and 2 x Lewmar 88)

WINDLASS &

GROUND TACKLE

Maxwell 6000 windlass

CQR anchor and 115 metres of chain

MAST, BOOM &

RIGGING

Sparcraft carbon fibre mast painted white

Cutter rig option (currently inside foil and furler not fitted)

Removable inner forestay for hank on staysail or storm sails

Tri-sail track fitted to back of mast

4 spreader non fractional rig

Running backstays

Keel stepped

Stainless steel rod rigging

Sparcraft composite V boom accommodating conventional slab reefing

Hydraulic boom vang

Hydraulic adjustable mainsheet track on worm drive

SAILS:

Full battened mainsail 260m² by Incidences 2015

Genoa 275m² by Incidences 2015

Staysail 95m² by Incidences 2015

FIRE & SAFETY:

Firebuoy Gas suppression system installed in engine room (manual or auto deployed)

220v salt water fire pump in forepeak/sail locker

ACCOMMODATION:

Guests:

Lunar Mist comfortably accommodates 8 guests in four dedicated guest cabins. Each cabin has an en-suite bathroom and shower. The master cabin bathroom also has a large bath. The guest cabins are all located forward of the saloon. All crew accommodation and assets are aft in the stern of the yacht.

Guest cabins comprise of:

- Master cabin to port with large double berth
- VIP cabin to starboard with double bed. This cabin is directly opposite the master cabin across the central passageway
- 1 x double bed cabin port side forward of Master cabin
- 1 x double bed cabin starboard side forward of VIP cabin

Crew:

Lunar Mist accommodates 6 crew in 3 separate cabins. Typically, the yacht is operated by 4 crew. Crew cabins comprise of:

- 1 x captains cabin port side midship. c/w double bed and private heads with shower and WC. The captains office and chart table adjoin this cabin
- 1 x twin bunk cabin port side with adjoining shared WC. This cabin shares a separate shower room with sink.
- 1 x single cabin starboard side aft. A compact bunk cabin with fold down pullman berth above.

Galley & Crew Mess

This area is particularly generous in size and lends itself very well for extended long-haul cruising and a happy crew! The galley to starboard is aft of the saloon with own doored entrance. The galley has ample work surface areas and storage. There is a central island with storage, stainless steel work surface and halogen cook top above. Adjoining the galley is a U shaped crew dining/TV area which is adequately away from the galley.

The crew also have a dedicated aft companionway aft of the crew mess which immediately accesses the aft cockpit and dedicated helm area.

Within the galley is doored access to the large engine room which has good headroom.

NAVIGATION:

B&G Depth

B&G Boat speed

B&G Radar

B&G AIS

B&G Chart plotters

OTHER:

Tender:

Novurania 400DL (4M / 13' LOA) centre console rigid inflatable

Yamaha 50 horse power outboard

Foredeck stored in dedicated well and on chocks

Launched by spinnaker halyard

BROKER COMMENTS:

Exclusions

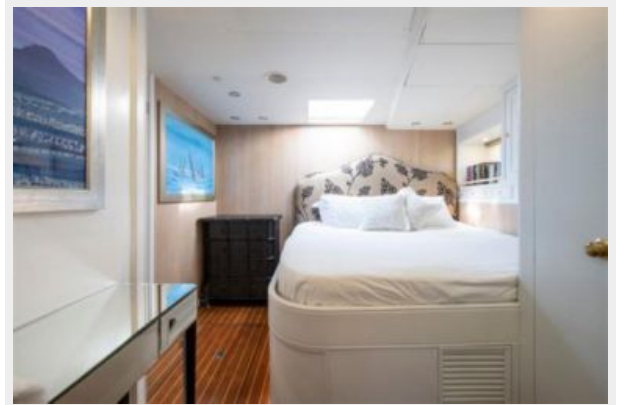
Owner's personal belongings.

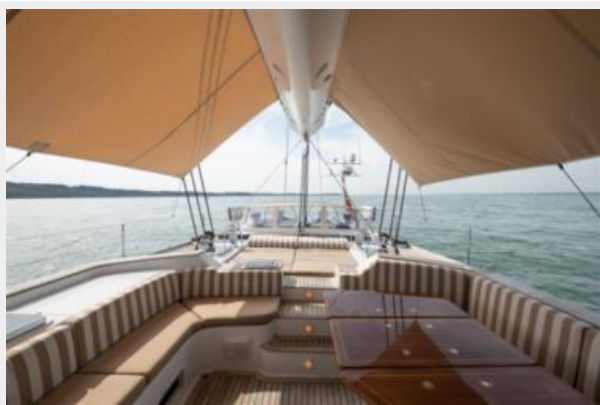
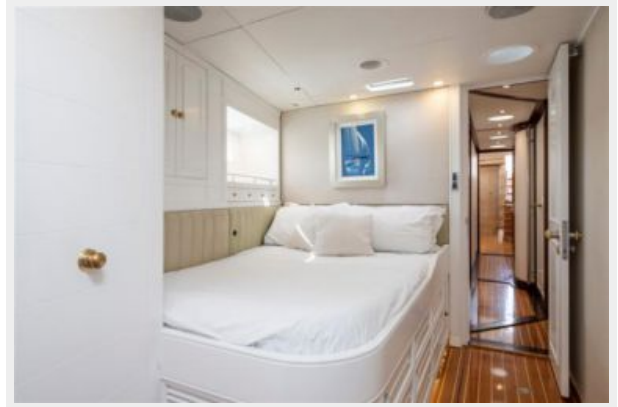
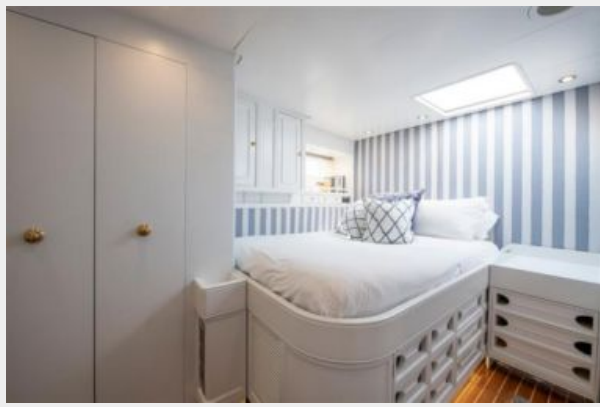
Disclaimer

The Company offers the details of this vessel or yacht in good faith but cannot guarantee or warrant the accuracy of this information nor warrant the condition of the vessel. A buyer should instruct his representatives, agents, or his surveyors, to investigate such details as the buyer desires validated. This vessel or yacht is offered subject to prior sale, price change, or withdrawal without notice.

PHOTOS





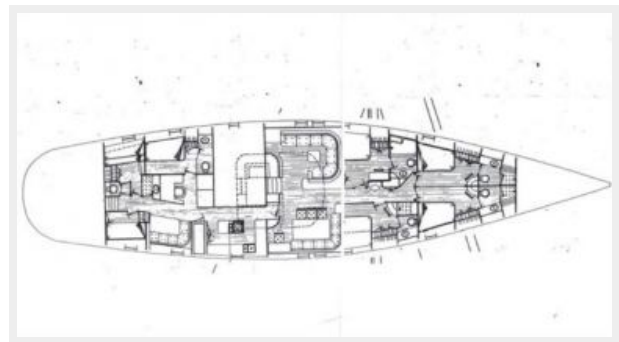








GA - LUNAR MIST



CONTACTS

Andrey Shestakov, leading yacht broker of the sales department of Shestakov Yacht Sales Inc. Shestakov Yacht Sales Inc., the official representative of the Miami/Fort Lauderdale FL headquarters.

Contact details

Email: andrey@shestakovyachtsales.com

Web: shestakovyachtsales.com/en/

Telephones

USA: +1(954)274-4435

Office hours

Monday – Saturday: **9:00 - 21:00** EDT

Sunday: **closed**

Address



Harbour Towne Marina, 850 NE 3rd St,
STE 213, Dania, FL 33004