

2003 SEA RAY 550 SUNDANCER — SEA RAY



Builder: [SEA RAY](#)

Year Built: 2003

Model: Cruising Yacht

Price: PRICE ON APPLICATION

Location: United States

LOA: 55' 8" (16.97m)

Beam: 15' 11" (4.85m)

Max Draft: 4' 0" (1.22m)

Cruise Speed: 28 Kts. (32 MPH)

Max Speed: 33 Kts. (38 MPH)

Our experienced yacht broker, Andrey Shestakov, will help you choose and buy a yacht that best suits your needs 2003 Sea Ray 550 Sundancer — SEA RAY from our catalogue. Presently, at Shestakov Yacht Sales Inc., we have a wide variety of yachts available on our sale's list. We also work in close contact with all the big yacht manufacturers from all over the world.

If you would like to buy a yacht 2003 Sea Ray 550 Sundancer — SEA RAY or would like help answering any questions concerning purchasing, selling or chartering a yacht, please call **+1(954)274-4435**

TABLE OF CONTENTS

TABLE OF CONTENTS	2
SPECIFICATIONS	6
Overview	6
Basic Information	6
Dimensions	6
Speed, Capacities and Weight	7
Accommodations	7
Hull and Deck Information	7
Engine Information	7
DETAILED INFORMATION	8
Overview	8
Exclusions	11
Disclaimer	11
PHOTOS	12
2	12
3	12
4	12
5	12
6	13
7	13
8	13
9	13
10	14
11	14
12	14
13	14
14	15
15	15

16	15
17	15
18	16
19	16
20	16
21	16
22	17
23	17
25	17
24	17
26	18
27	18
28	18
29	18
30	19
31	19
32	19
33	19
34	20
35	20
36	20
37	20
38	21
39	21
40	21
41	21
42	22
43	22
44	22

45	22
46	23
47	23
48	23
49	23
50	24
51	24
52	24
53	24
54	24
55	24
56	25
57	25
58	25
59	25
60	25
61	25
62	26
63	26
65	26
64	26
66	26
67	26
68	27
69	27
70	27
71	27
72	27
73	27

74	28
75	28
76	28
77	28
78	28
79	28
80	28
81	28
82	29
83	29
84	29
85	29
86	29
87	29
88	29
CONTACTS	30
Contact details	30
Telephones	30
Office hours	30
Address	30

SPECIFICATIONS

Overview

2003 Sea Ray 550 Sundancer with 800 MANS listed for sale. Immaculate only begins to describe this spacious, express cruiser. Captain maintained, cleaned and detailed consistently and has only 1100 hours, with 1700 hours on the generator. Some new additions just done include canvas cockpit sun shade, 4 color changing underwater lights in transom, cockpit flat-screen TV with new soundbar and Strataglass front windshield with side curtains. This is a perfect weekend or long-range vessel with a great deal of creature comforts. Down below in the Galley and throughout the vessel she has brand new carpet which compliments the Corian countertops and cherry cabinetry. The galley is also equipped with an additional built-in freezer in addition to a regular refrigerator freezer and a brand new microwave. There is a large Flatscreen TV in the Salon, with large table and a beautiful settee.

Basic Information

Category: Cruising Yacht

Sub Category: Cabin Cruiser

Model Year: 2003

Year Built: 2003

Country: United States

Dimensions

LOA: 55' 8" (16.97m)

Beam: 15' 11" (4.85m)

Max Draft: 4' 0" (1.22m)

Clearance: 13' 4" (4.06m)

MFG Length: 55' 0" (16.76m)

Speed, Capacities and Weight

Cruise Speed: 28 Kts. (32 MPH)

Max Speed: 33 Kts. (38 MPH)

Displacement: 39000 Pounds

Water Capacity: 150 Gallons

Holding Tank: 68 Gallons

Fuel Capacity: 300 Gallons

Accommodations

Total Cabins: 2

Total Berths: 2

Total Heads: 2

Hull and Deck Information

Hull Material: Fiberglass

Engine Information

Engines: 2

Manufacturer: MAN

Engine Type: Inboard

Fuel Type: Diesel

DETAILED INFORMATION

Overview

Immaculate just begins to describe this spacious, fast express cruiser. "Trouble" is Captain maintained, cleaned and detailed consistently and has only 1100 hours and the 1000 hour service has been done. Some new additions just done include canvas cockpit sun shade, 4 color changing underwater lights in transom, cockpit flat screen TV with new sound bar and Strataglass front windshield and side curtains. This is a perfect weekend or long range vessel with a great deal of creature comforts below. Down below in the Galley and throughout the vessel she has brand new carpet which complement the Corian counter tops and cherry cabinetry. The galley is also equipped with an additional built in freezer in addition to a regular refrigerator freezer and a brand new microwave. There is a large Flat screen TV in the Salon, with large table and beautiful settee. The boat shows like new and can be seen by appointment only at our office in Fort Lauderdale. Accommodations -There is built in U-shaped cockpit seating, an electric sun pad, a Hi-Lo cockpit table, and a wet bar with icemaker. Forward is the helm station with European style helms eating and full electronics. Down into the main salon with its beautiful cherry wood interior, custom Hi-Lo table, upgraded new carpet and fabrics. The leather salon sofa is of course electric. The entertainment center features a stereo system with DVD, DSS satellite and a large flat screen Television. The stunning and perfectly equipped galley has Corian countertops and under the counter is installed an extra stainless steel freezer in lieu of the washer/dryer combo. Aft to Starboard is the master stateroom with full walk around queen size bed, plenty of closet and storage space, a very spacious master head with flat screen television. All the way forward is the VIP stateroom also with queen berth and private head which has a second door into the salon for daytime use.

- Large Flat Screen Television
- Wine and Liquor Cabinet
- Couch w/electronically operated slide-out bed
- Fireboy smoke alarms and fire detectors
- Sun Shades for all hatches
- Central Vac system
- Carbon Monoxide Monitors
- Galley
- Coffeemaker, 120V (Spacemaker)
- Custom-molded fiberglass countertop w/solid surface cutting board & sink w/single-level Grohe faucet
- Recessed 3-burner stove w/solid surface cover (Kenyon)
- New Microwave 120V (2016)
- Refrigerator/freezer w/icemaker
- Upper and Lower Storage Cabinets

- Glass and dish storage
- Inlaid Burl and Cherry Hi Lo Dining/Coffee Table w/2 extra storage stools
- Gunwale Cabinets-upper
- In-Floor storage
- Under Sofa Storage

Staterooms – Equipped with a 2 stateroom layout with master midship and VIP forward Master Stateroom

- Flat Screen TV
- Queen-size Bed w/Innerspring mattress, pillows, sheets, coordinated spread w/carpeted storage below w/gas-assisted hatch
- Hanging Locker, Full-length cedar-lined w/lights & mirrored doors (2) starboard
- Vanity w/solid surface countertop, beveled mirrors, drawers and storage cabinet.

Master Head

- Bath accessories, Chrome & Gold
- Tile Flooring
- Handrails, Elliptical Stainless Steel
- Shower w/Seat, Adjustable shower wand & circular acrylic door
- Upper Cabinet Storage
- Mirrored Medicine Cabinet
- Surface sink, Grohe Faucet, drawers & storage below

VIP Stateroom

- Flatscreen TV
- Smoke Alarm/Fire Detector
- Queen sized bed w/Innerspring mattress, pillows and sheets
- Coordinated Spread w/drawers & carpeted storage below w/gas assisted hatch
- Mirrored rope locker bulkhead
- Storage cabinet w/drawers- Port

Guest Head

- Bath accessories, Chrome & Gold
- Privacy door- Access from Forward Stateroom
- Privacy door- Access from Salon
- Tile Flooring
- Storage Cabinet w/Beveled Mirrors
- Medicine Cabinet w/Beveled Mirrors
- Vanity w/Molded solid surface countertop w/integral sink, Grohe faucet, drawers and storage below

Mechanical & Electrical Electronics Raymarine E120 with 12.1" Screen, Garmin GPS 4212,

Raymarine ST7001 Auto Pilot, ACR remote spotlight, Bennet Trim Tabs, Sea Ray Systems monitor, Raymarine Handset VHF w/speaker, Vetus Bow Thruster Control, Fusion MS AV600 Stereo System with Speakers and Subwoofer (Cockpit), KVH Satellite TV and Fiquench Fireboy Fire system

- Batteries 8-D w/Boxes 94) & Group 27 for Genset (1)
- Battery Charger/Converter 120V/10 Amp/12V
- Battery Charger/Converter 240V/50 Amp/24V
- Battery Charger Overcurrent Protection
- Battery Equalizer, 50 Amp (2)
- Batter Solenoid Switches 12V (2) 24V (2)
- Cablemaster w/120V/50 Amp/60 cycle Shore Power, 50' Cord & Remote (Glendenning)
- Generator w/remote start and muffler, freshwater cooling, fuel filter, Seacock & Seawater strainer 240V
- Control Station
- High-Water Bilge Alarms
- Bow Thruster 24V
- Compass
- Emergency Engine Stop
- Emergency Start System - Engines
- Fuel (3)
- Gear Temperature
- Voltmeters
- Systems Monitor, Digital LCD - For Engine Diagnostics & Pump Monitoring
- Water Temperature
- Tachometers w/LCD Hour meters (2)
- Shift & Throttle Controls, Dual Hydraulic

Engine Room

- Bilge Pumps, 24V Automatic (1 Aft 1 Fwd)
- Bilge Pumps, 24V Automatic High-Water (1 Bilge, 1 Fwd Cabin)
- Engine Drip Sumps
- Exhaust, Power Pac/Lift System Mufflers
- Fire Extinguishers
- Fire Suppression System- Automatic w/Diesel Shutdown, override & Manual Pull
- Freshwater Cooling
- Insulation- 2" w/Vinyl Barrier
- Oil Changer System- Engines, Transmissions & Generator

Deck Faux Teak Decking Hydraulic swim platform Anchor windlass A.C. in cockpit New Sun Shade for Cockpit Wet bar w/icemaker and separate fridge in cockpit Forward sun pads Cablemaster shorepower cord retrieval system Navigation Lights Heavy duty PVC Rub Rail w/Stainless Steel Insert Windshield- Tempered/Tinted Curved glass w/stainless steel frame, electric front vent & stainless steel support Windshield washer system Windshield Wipers New

Strata Glass Windshield and Side Panels (2016)XM Satellite Radio in Cockpit
COCKPIT SEAT ELECTRICALLY CONVERTS TO SUNPADCockpit

REAR

- Cockpit, self-Bailing fiberglass w/gas assisted engine room service hatch & pivoting stainless steel engine room ladder
- Transom door
- Hardtop, fiberglass w/stainless steel grab rails & overhead lighting w/electronic dimmer
- Hi-Lo Fiberglass Table w/Dedicated storage
- Wet bar w/sink, cooler, removable trash receptacle & storage-- Port
- Icemaker 120V
- Lighting, indirect w/multiple-way switching capability
- Cable TV outlet
- Dual-Voltage Refrigerator 120V/12V
- Euro-Styled Companion Bench
- Custom Euro-Styled Helm Seating w/flip-up thigh-rise bolster, armrests & heavy-duty pedestal w/slide, swivel and Pneumatic vertical adjustment
- Retractable Sun pad - Aft
- 12V AM/FM single CD w/6-disc CD changer

Exclusions

Owner's personal belongings.

Disclaimer

The Company offers the details of this vessel or yacht in good faith but cannot guarantee or warrant the accuracy of this information nor warrant the condition of the vessel. A buyer should instruct his representatives, agents, or his surveyors, to investigate such details as the buyer desires validated. This vessel or yacht is offered subject to prior sale, price change, or withdrawal without notice.

PHOTOS

2



3



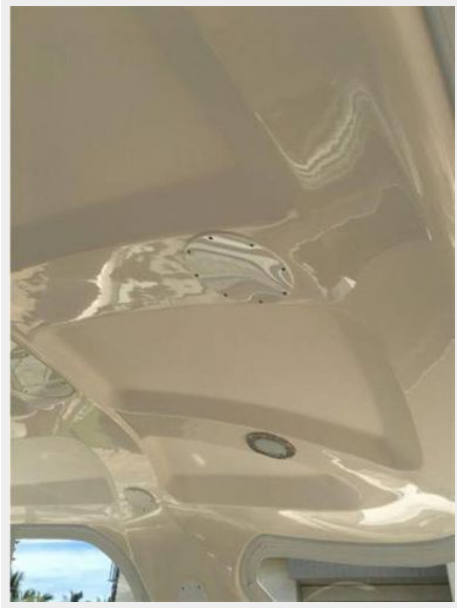
4



5



6



7



8



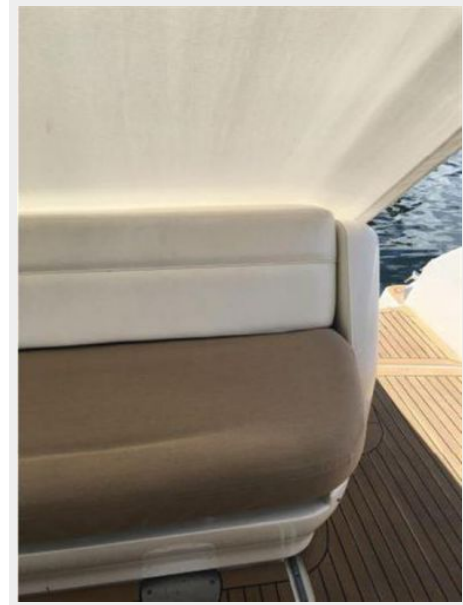
9



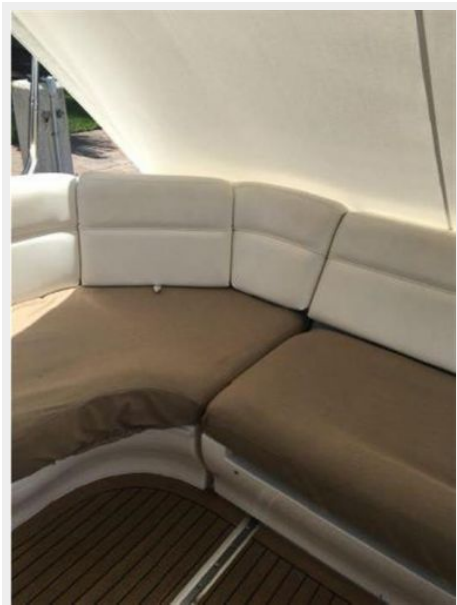
10



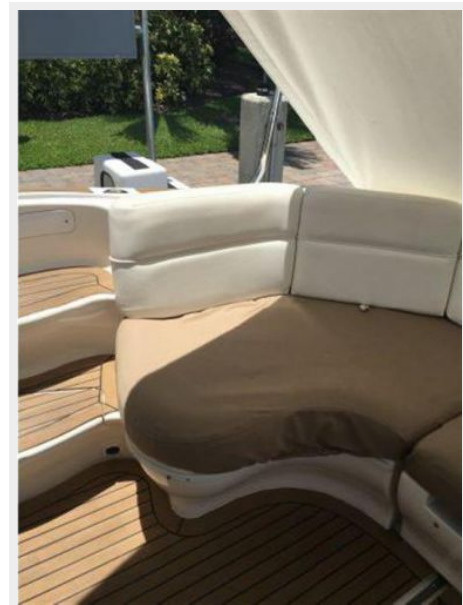
11



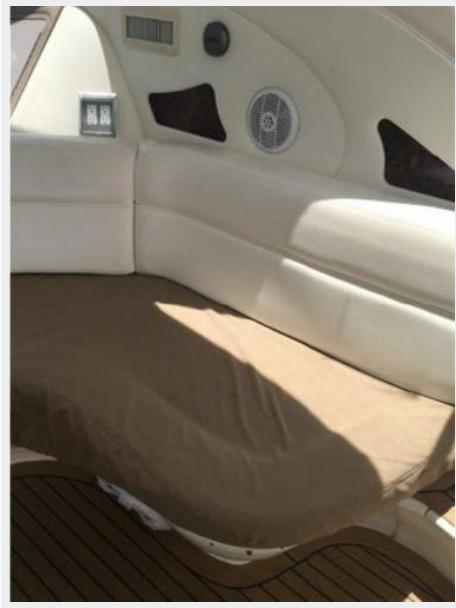
12



13



14



15



16



17



18



19



20



21



22



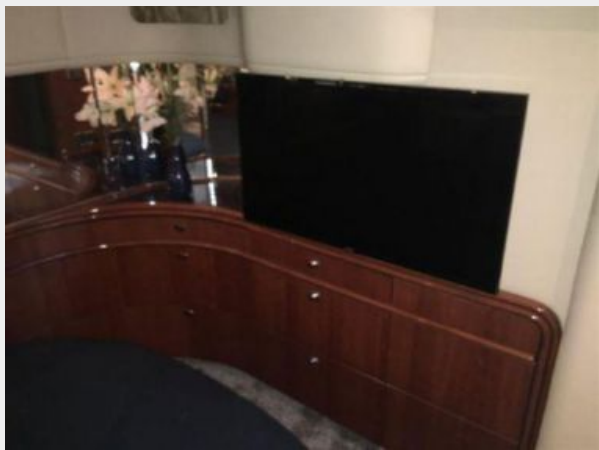
23



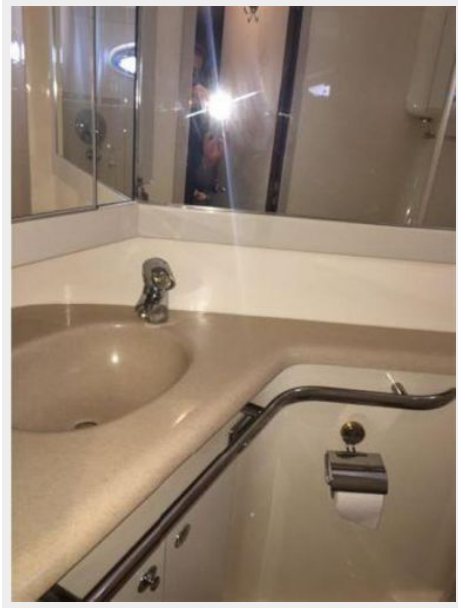
25



24



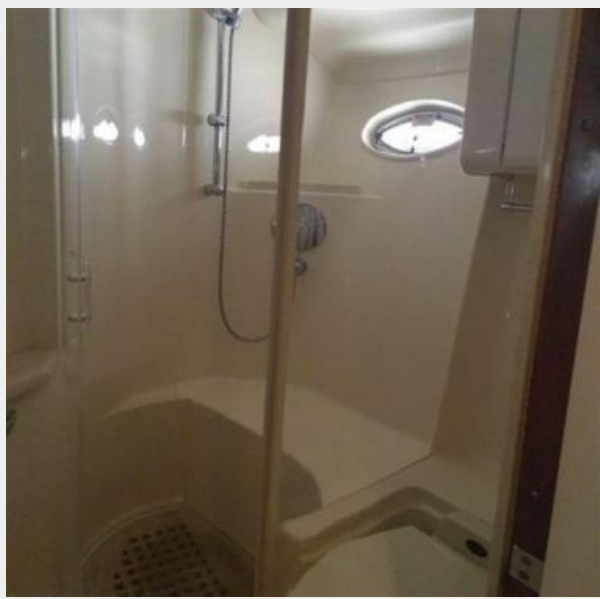
26



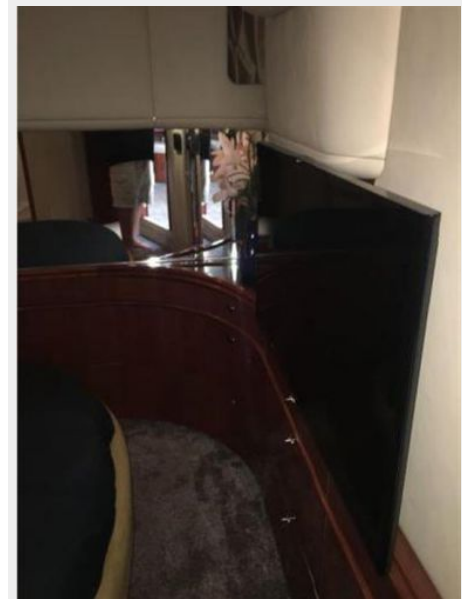
27



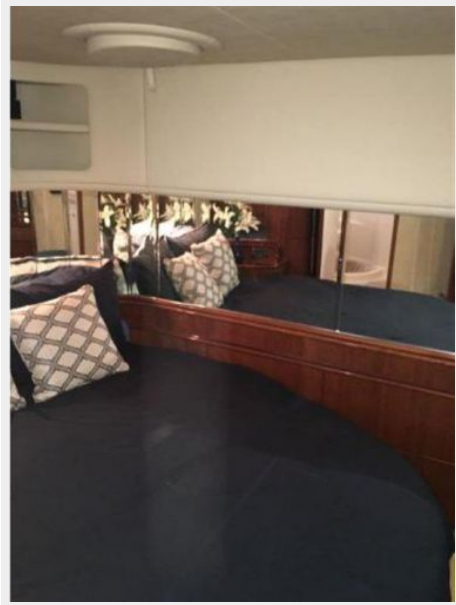
28



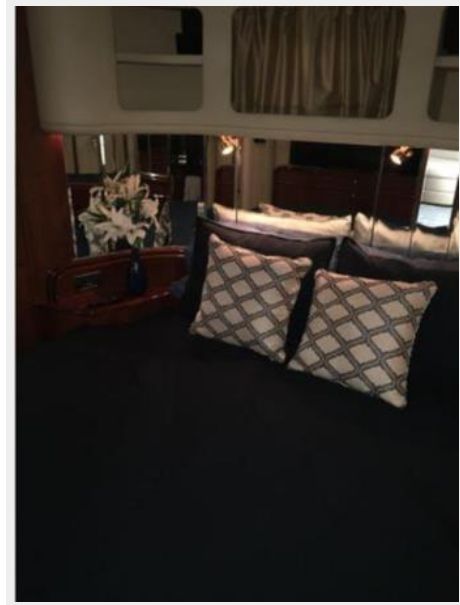
29



30



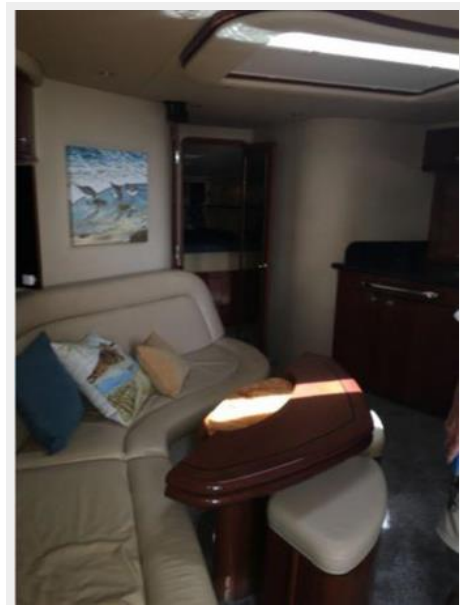
31



32



33



34



35



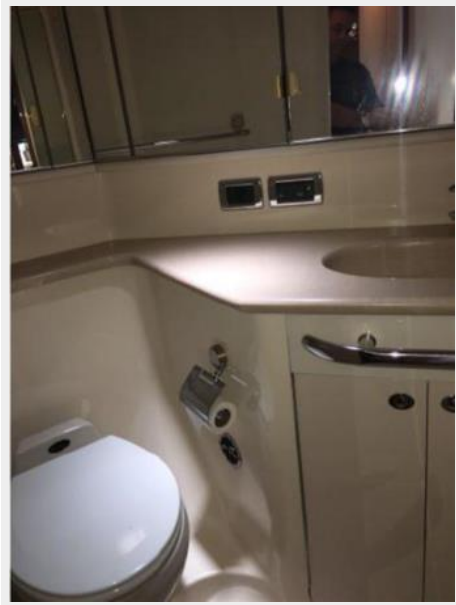
36



37



38



39



40



41



42



43



44



45



46



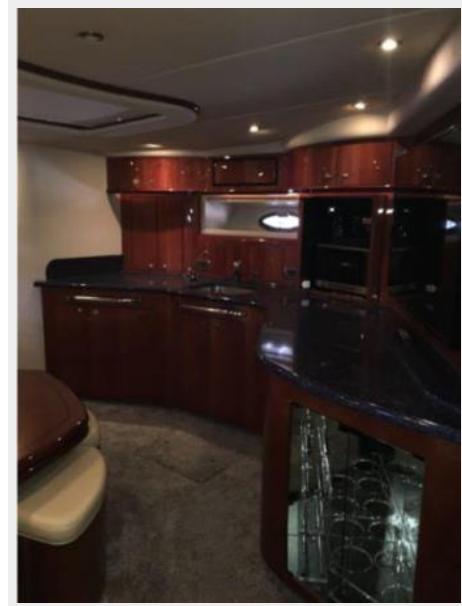
47



48



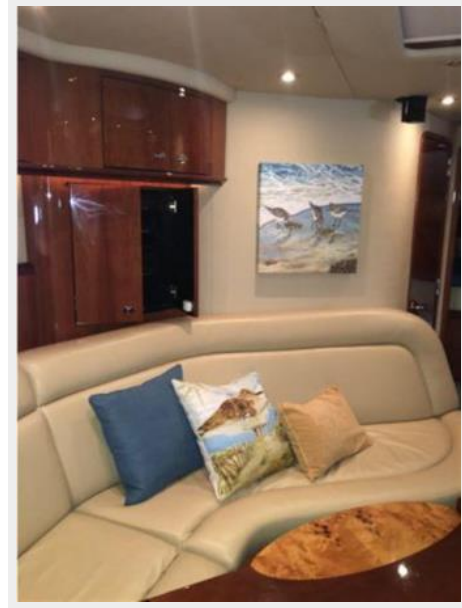
49



50



51



52



53



54



55



56



57



58



59



60



61



62



63



64



65



66



67



68



69



70



71



72



73



74



75



76



77



78



79



80



81



82



83



84



85



86



87



88



CONTACTS

Andrey Shestakov, leading yacht broker of the sales department of Shestakov Yacht Sales Inc. Shestakov Yacht Sales Inc., the official representative of the Miami/Fort Lauderdale FL headquarters.

Contact details

Email: andrey@shestakovyachtsales.com

Web: shestakovyachtsales.com/en/

Telephones

USA: +1(954)274-4435

Office hours

Monday – Saturday: **9:00 - 21:00** EDT

Sunday: **closed**

Address



Harbour Towne Marina, 850 NE 3rd St,
STE 213, Dania, FL 33004